

LED T8 - BAYLIGHTER™

IBT100/200/300

Listed LED T8 High Bay, I-Bay Series



FEATURES

- High bay open light luminaire for LED T8 light tubes.
- Removable wiring accessed plate.
- Stem, cable, and chain mountable.
- Quarter turn rotary locking sockets.
- ETL Listed / Conforms to UL Standard 1598 - SUB 8750

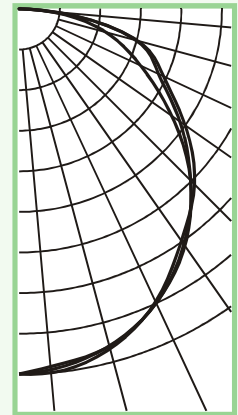


AVAILABLE WITH

- Heavy duty safety switch.
- .040 aluminum fixture housing
- 11ga. Wire guard
- Die cast hub for 3/4" pipe mounting
- Steel safety cable
- Motion sensor
- Cord and plug

EBY400-8-4L-LED8

TEST NO.=LA-T1810
 LAMP TYPE=LED T8, 4'
 NO. OF LAMP=8
 LUMENS PER LAMP=1300
 WATTS PER LAMP=15
 BALLAST FACTOR=1
 PHOTOMETRY TYPE=C



CANDLEPOWER

Angle	End	45	Cross
0	3327	3327	3327
5	3300	3272	3329
15	3178	3183	3206
25	2958	2957	2945
35	2618	2636	2580
45	2213	2213	2262
55	1699	1789	1847
65	1223	1402	1453
75	820	1105	1118
85	285	337	327
90	17	13	3
95	5	6	0
105	1	0	0
115	0	0	0
125	0	0	0
135	0	0	0
145	0	0	0
155	0	0	0
165	0	0	0
175	0	0	0
180	0	0	0

ZONAL LUMEN SUMMARY

DEGREES	LUMENS	% LAMP	% FIXTURE
0-30	2585	24.9	25.1
0-40	4230	40.7	41.1
0-60	7551	72.6	73.4
0-90	10274	98.8	99.9
90-120	7	0.1	0.1
90-150	7	0.1	0.1
90-180	7	0.1	0.1
0-180	10281	98.9	100.0

Luminaire Efficiency = 98.9%

SPACING CRITERION

ALONG	ACROSS
1.24	1.23



LOS ANGELES LIGHTING MFG. CO.

10141 OLNEY ST. / EL MONTE, CA 91731

<http://www.lalighting.com>

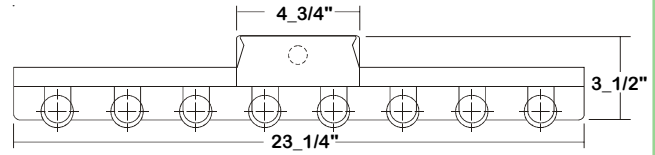
TEL : 626-454-8300 FAX : 626-454-8399

LED T8 - BAYLIGHTER™



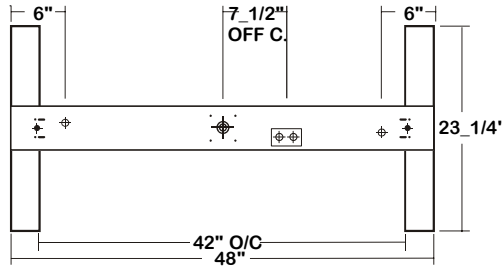
IBT300 SERIES - LED T8

CROSS SECTION



BACK

- V-HOOK
- 3/16" K.O.
- ◆ 11/16" STEM MTG. K.O.
- ⊕ 7/8" OFFSET K.O.
- ⊕ 2" K.O.



CATALOG NUMBER

	NOMINAL LENGTH	TOTAL LAMPS
IBT300-8-4LI	4'	8
IBT300-8-4LR	4'	8
IBT300-10-4LI	4'	10
IBT300-10-4LR	4'	10

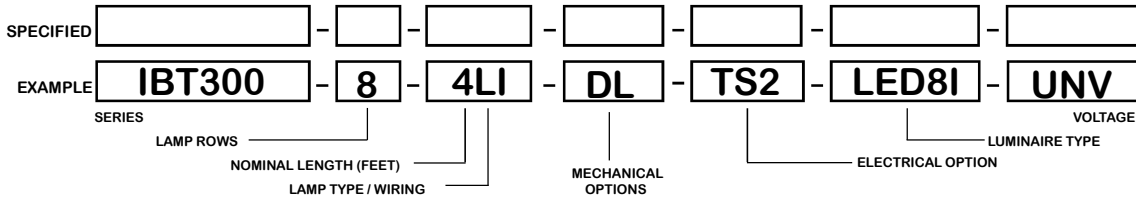
SAFETY SWITCH



TS2 - LED Luminaire On/Off Safety Switch

- Easily accessible on exterior of wire way.
- Allows individual fixture to be switched ON/OFF during re-lamping or Maintenance.
- Prevents damage to lamp and electrical shock during lamping and re-lamping.
- Allows safe entry to wire way channel where power connector can be disconnected for maintenance to fixture.

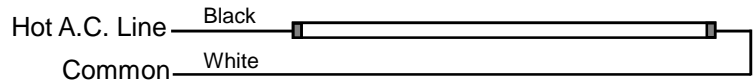
ORDERING



LAMP TYPE

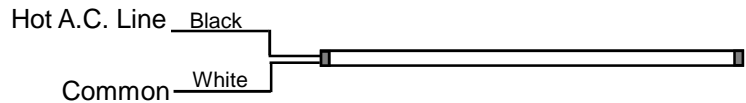
LI = LED T8 light tube, self-driven.

Black lead (Hot A. C. line) connected to one end of the light tube, and white lead (Common line) connected to the other end.



LR = LED T8 light tube, self-driven.

Black lead and white lead connected to the same end.



OPTIONS AND ACCESSO-

• ELECTRICAL OPTIONS

- LED Luminaire ON/OFF Safety Switch
- Pull Switch
- 6' 3Wire Cord + Plug (U-Ground)

SUFFIX

- TS2
- PS1
- CP3

• MECHANICAL OPTIONS

- Damp Location
- Wire Guard - 11 Ga.
- Fixture Suspending System
- V-Hooks For Chain MTG.
- Die Cast Hub For 3/4" Pipe

SUFFIX

- DL
- WG11
- *
- V-4
- HUB

*See Appropriate Reference Page

SPECIFICATIONS

** Lamp(s) by others.

- **TYPE**
- **CONSTRUCTION**
- **WIRE GUARDS**
- **FINISH**
- **WIRING**
- **LABELS**

High bay open light luminaire for stems, cable or chain mounting for LED T8 light tube(s)** with internal driver. 22 gauge cold rolled steel housing. Quarter turn rotary locking lampholders standard. (20 ga. C.R.S. and .040 aluminum housing available as specified)
 11 ga. Chrome epoxy powder coated.
 Baked white polyester finish, minimum reflectance 86%. (Powder coated finish available.)
 Operates T8 LED light tube(s)**.
 ETL Listed. Conforms to UL standard 1598 - SUB 8750.

