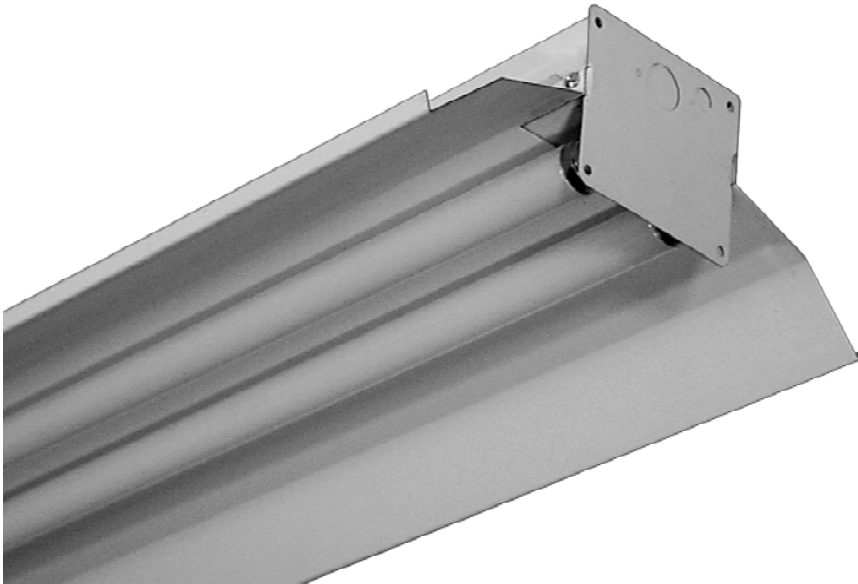


Industrial Series

IND240

Industrial Series

1 or 2 Lamps Open Lamps Industrial



FEATURES

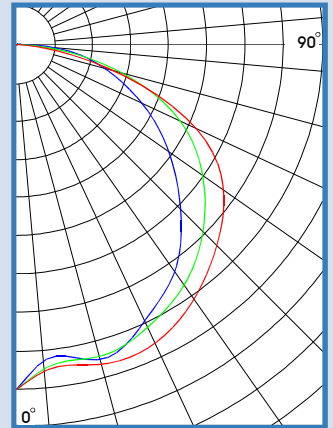
- 11" medium industrial cold rolled steel reflector.
- Screw-on end caps.
- Row mountable.
- Stem, cable, and chain mountable.
- Quarter turn rotary locking sockets.
- Baked white polyester finish.
- Electronic ballast.

AVAILABLE WITH

- Special ballast
- Specular or white aluminum reflector
- Motion sensor
- Wire guard
- Cord and plug
- Up-light

IND240-24R-E8

TEST NO.=LA-T0281
 LAMP TYPE=F032/31K
 NO. OF LAMP=2
 LUMENS PER LAMP=2900
 WATTS PER LAMP=32
 BALLAST FACTOR=1
 PHOTOMETRY TYPE=C



CANDLEPOWER

Angle	End	45	Cross
0	1487	1487	1487
5	1367	1401	1412
15	1406	1392	1427
25	1312	1343	1419
35	1191	1262	1336
45	999	1137	1222
55	800	979	1089
65	595	778	853
75	389	470	429
85	174	124	67
90	37	19	3
95	16	12	0
105	5	4	0
115	1	1	0
125	1	0	0
135	0	0	0
145	0	0	0
155	0	0	0
165	0	0	0
175	0	0	0
180	0	0	0

ZONAL LUMEN SUMMARY

DEGREES	LUMENS	% LAMP	% FIXTURE
0-30	1158	20.0	23.1
0-40	1952	33.6	38.9
0-60	3685	63.5	73.4
0-90	5000	86.2	99.6
90-120	18	0.3	0.4
90-130	18	0.3	0.4
90-150	18	0.3	0.4
90-180	18	0.3	0.4
0-180	5019	86.5	100.0

Luminaire Efficiency = 86.5%

SPACING CRITERION

ALONG	ACROSS
1.25	1.38

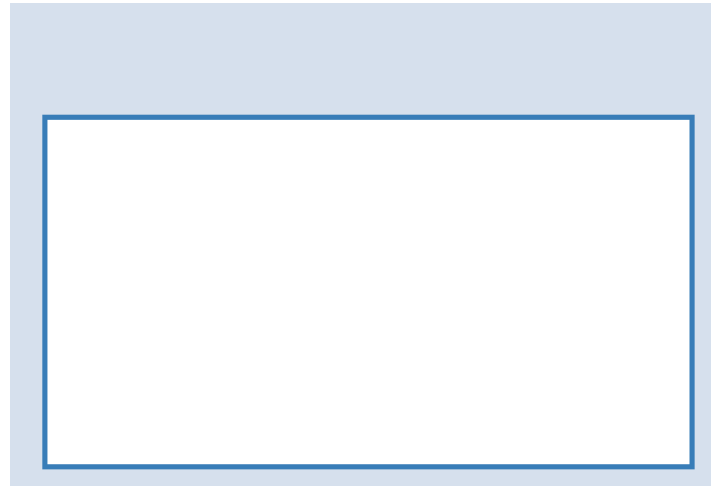
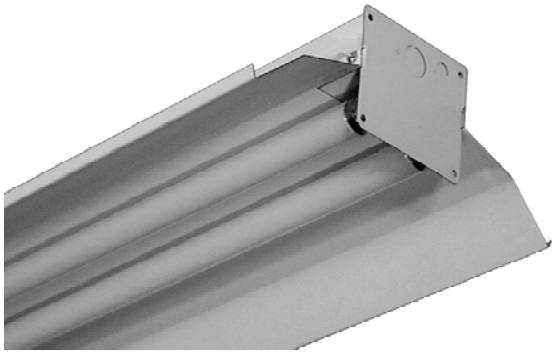


LOS ANGELES LIGHTING MFG. CO.

10141 OLNEY ST. / EL MONTE, CA 91731

<http://www.lalighting.com>

TEL : 626-454-8300 FAX : 626-454-8399



CATALOG NUMBER
