



ARCHITECTURAL

ICL209 SERIES Indirect Cove Luminaire



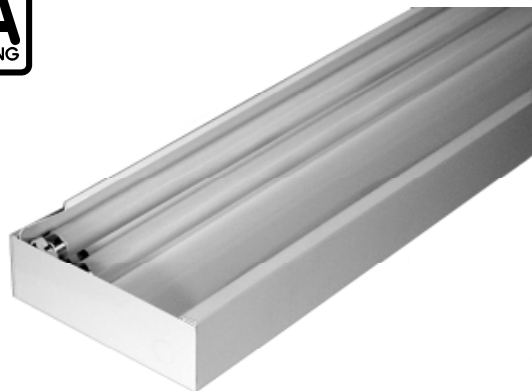
- T8, 2-Lamp Indirect Cove Luminaire
- Low Profile
- Welded And Painted After Fabrication
- Available with:
 - Fluorescent, LED and LED T8 (Internally Driven)
 - 95% Enhanced Specular Aluminum Reflector
 - Emergency Battery Pack



Photometric Data and IES Files are Available on www.lalighting.com

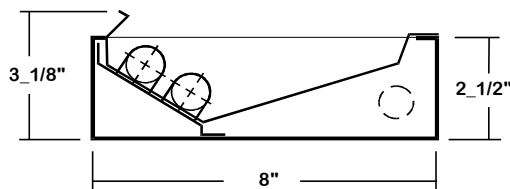


LOS ANGELES LIGHTING MFG. CO.
 10141 OLNEY ST. / EL MONTE, CA 91731
TEL : 626-454-8300 FAX : 626-454-8399
www.lalighting.com



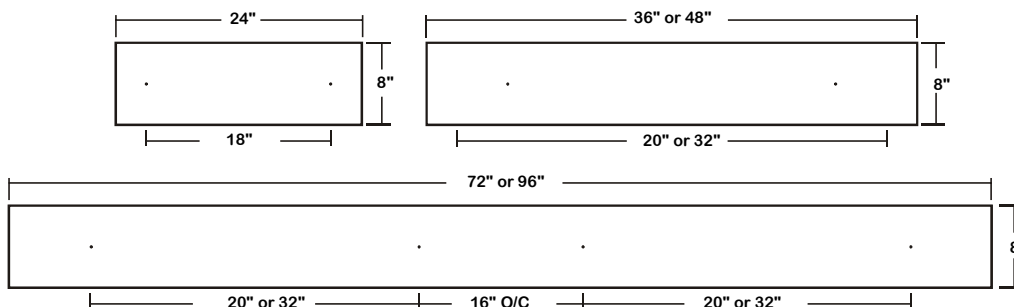
ICL209 SERIES

CROSS SECTION



BACK PLATE

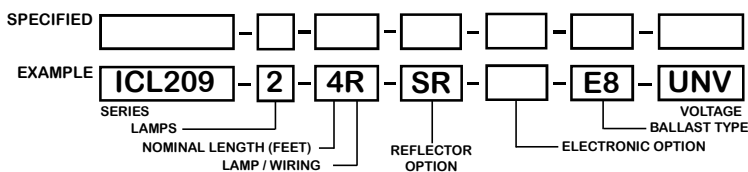
• 3/16" MTG. HOLE



CATALOG NUMBER

CATALOG NUMBER	NOMINAL LENGTH	TOTAL LAMPS
ICL209-2-2R	2'	2
ICL209-2-3R	3'	2
ICL209-2-4R	4'	2
ICL209-2-6RT	6'	4
ICL209-2-8RT	8'	4

ORDERING GUIDE



NOTE: LAMP/WIRING*
 R= Medium Bi-Pin T8
 RT= Medium Bi-Pin T8, Tandem Wiring

OPTIONS AND ACCESSORIES

REFLECTOR OPTIONS	SUFFIX	ELECTRICAL OPTIONS	SUFFIX	BALLAST OPTIONS	SUFFIX
Specular Aluminum Reflector (95%)	SR	Emergency Battery Pack	BP*	Electronic Ballast T8	E8*
White Aluminum Reflector (90%)	WR	External Line Fusing (HLR/GLR)	ELF	Electronic T8 Step Dimming	E8SD
		Plug-In Branch Wiring Connector System	*		

*See Appropriate Reference Page

SPECIFICATIONS

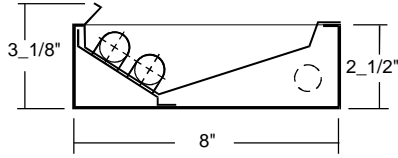
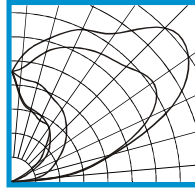
- **TYPE** Two-light indirect cove light. Designed to distribute light in an even wash across a surface.
- **CONSTRUCTION** 20 ga. cold rolled steel welded housing.
- **FINISH** Baked white powder coated finish, minimum reflectance 90%, painted after fabrication.
- **REFLECTOR** One piece reflector/wireway cover fastened to housing by quarter-turn fastener.
 SR - 95% reflectance enhanced aluminum reflector standard. WR - 90% high reflectance white aluminum reflector available.
- **WIRING** 120v 60Hz., 277v 60Hz., UNV (universal voltage 120v thru 277v.) or as otherwise specified.
- **LABELS** U.L. Listed. Suitable for damp locations.



PHOTOMETRIC DATA

ICL209-2-4R-SR-E8

TEST NO.=LA-T0395
 LAMP TYPE=F032/31K
 NO. OF LAMP=2
 LUMENS PER LAMP=2900
 WATTS PER LAMP=32
 BALLAST FACTOR=1
 PHOTOMETRY TYPE=C



CANDLEPOWER

ANGLE	0	45	90	135	180
0	0	0	0	0	0
5	0	0	0	0	0
15	0	0	0	0	0
25	0	0	0	0	0
35	0	0	0	0	0
45	0	0	0	0	0
55	0	0	0	0	0
65	0	0	0	0	0
75	0	0	0	0	0
85	0	1	1	0	0
90	80	57	18	0	0
95	362	320	128	2	0
105	770	749	278	16	2
115	1301	1122	370	122	10
125	1593	1275	476	294	222
135	1604	1199	569	397	344
145	1335	1152	646	476	482
155	1239	1092	690	526	494
165	1098	995	750	555	542
175	940	840	768	652	639
180	812	812	812	812	812

ZONAL LUMEN SUMMARY

DEGREES	LUMENS	% LAMP	% FIXTURE
0-30	0	0.0	0.0
0-40	0	0.0	0.0
0-60	0	0.0	0.0
0-90	9	0.2	0.3
90-120	1077	18.6	30.6
90-150	2847	49.1	80.9
90-180	3508	60.5	99.7
0-180	3517	60.6	100.0

Lumen Output = 3517 lumens
 Luminaire Efficiency = 60.6%

This space is intentionally left blank.

This space is intentionally left blank.

This space is intentionally left blank.

