

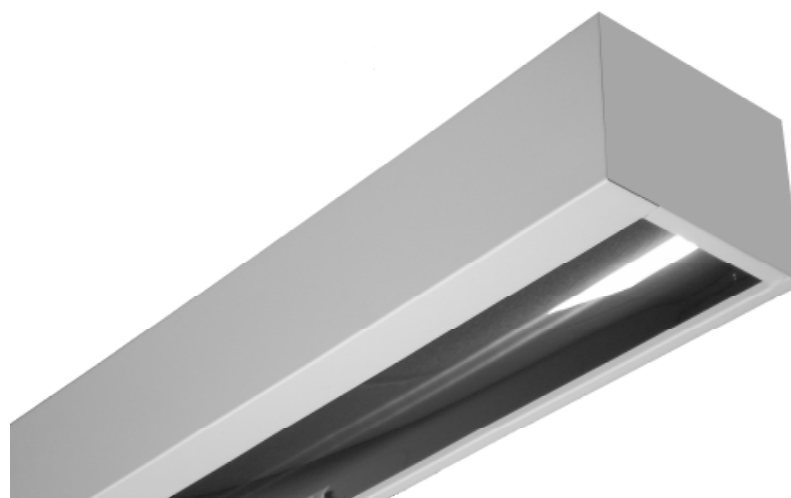


ARCHITECTURAL

MWW206 SERIES



Surface Mounted Wall Wash Luminaire



- Surface Mounted Wall Wash Luminaire
- One Lamp 28WT5 / 54WT5HO / 32WT8
- Welded And Painted After Fabrication
- Suitable for Damp Locations
- Available with:
 - Fluorescent, LED and LED T8 (Internally Driven)
 - 95% Enhanced Specular Aluminum Reflector
 - Emergency Battery Pack



Photometric Data and IES Files are Available on www.lalighting.com

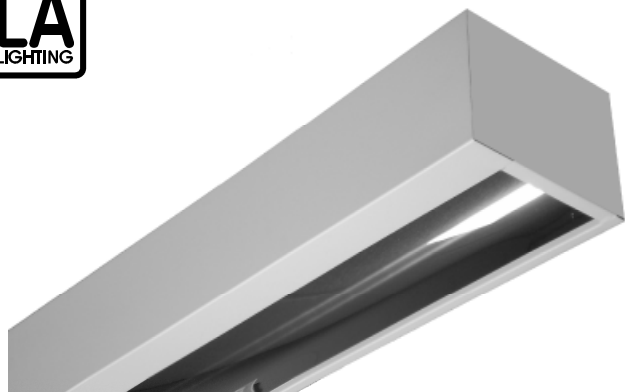


LOS ANGELES LIGHTING MFG. CO.

10141 OLNEY ST. / EL MONTE, CA 91731

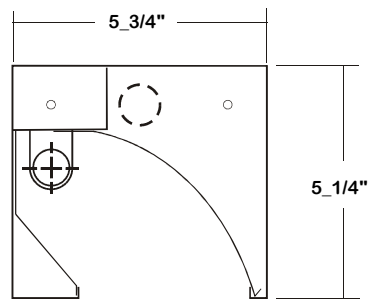
TEL : 626-454-8300 FAX : 626-454-8399

www.lalighting.com



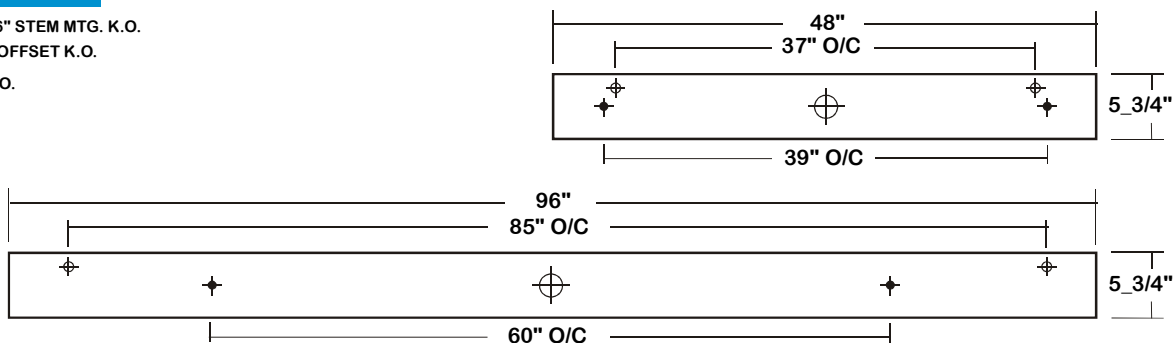
MWW206 SERIES

CROSS SECTION



BACK PLATE

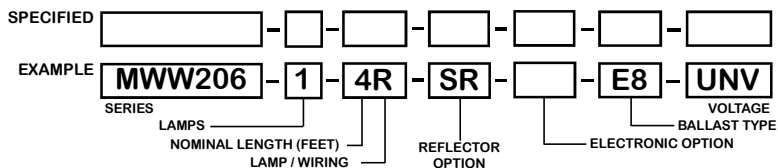
- ◆ 11/16" STEM MTG. K.O.
- ⊕ 7/8" OFFSET K.O.
- ⊕ 2" K.O.



CATALOG NUMBER

CATALOG NUMBER	NOMINAL LENGTH	TOTAL LAMPS
MWW206-1-4M	4'	1
MWW206-1-4R	4'	1
MWW206-1-8MT	8'	2
MWW206-1-8RT	8'	2

ORDERING GUIDE



NOTE: LAMP/WIRING*
 R= Medium Bi-Pin T8
 RT= Medium Bi-Pin T8, Tandem Wiring
 M= Medium Bi-Pin T5
 MT= Medium Bi-Pin T5, Tandem Wiring

OPTIONS AND ACCESSORIES

REFLECTOR OPTIONS	SUFFIX	ELECTRICAL OPTIONS	SUFFIX	BALLAST OPTIONS	SUFFIX
Specular Aluminum Reflector (95%)	SR	Emergency Battery Pack	BP*	Electronic Ballast T8	E8*
White Aluminum Reflector (90%)	WR	External Line Fusing (HLR/GLR)	ELF	Electronic Ballast T5	E5*
		Plug-In Branch Wiring Connector System	*	Electronic Ballast T5HO	E5H*

*See Appropriate Reference Page

SPECIFICATIONS

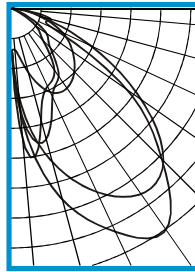
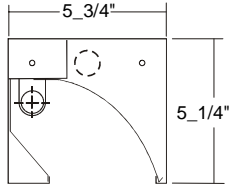
- **TYPE** Surface mounted, metal sided wall wash luminaire.
- **CONSTRUCTION** 20 ga. cold rolled steel welded housing.
- **FINISH** Back white powder coated finish, minimum reflectance 90%, painted after fabrication.
- **REFLECTOR** Specular aluminum reflector standard, 95% reflectance. (White aluminum reflector available)
- **WIRING** 120v 60Hz., 277v 60Hz., UNV (universal voltage 120v thru 277v.) or as otherwise specified.
- **LABELS** U.L. Listed. Suitable for damp locations.



PHOTOMETRIC DATA

MWW206-1-4M-SR-E5H

TEST NO.=LA-T1769
 LAMP TYPE=F54T5HO
 NO. OF LAMP=1
 LUMENS PER LAMP=5000
 WATTS PER LAMP=54
 BALLAST FACTOR=1
 PHOTOMETRY TYPE=C



CANDLEPOWER

ANGLE	0	45	90	135	180
0	398	398	398	398	398
5	1044	883	404	1005	1304
15	1914	1539	650	1294	1085
25	2371	1949	888	926	820
35	2591	2175	930	784	711
45	2037	2062	851	516	418
55	1340	1517	711	400	273
65	414	824	532	140	4
75	388	282	269	17	1
85	42	99	55	4	0
90	0	1	1	0	0
95	0	0	0	0	0
105	0	0	0	0	0
115	0	0	0	0	0
125	0	0	0	0	0
135	0	0	0	0	0
145	0	0	0	0	0
155	0	0	0	0	0
165	0	0	0	0	0
175	0	0	0	0	0
180	0	0	0	0	0

ZONAL LUMEN SUMMARY

DEGREES	LUMENS	% LAMP	% FIXTURE
0-30	1053	21.1	24.7
0-40	1923	38.5	45.2
0-60	3595	71.9	84.5
0-90	4257	85.1	100.0
90-120	0	0.0	0.0
90-150	0	0.0	0.0
90-180	0	0.0	0.0
0-180	4257	85.1	100.0

Lumen Output = 4257 lumens
 Luminaire Efficiency = 85.1%

SPACING CRITERION

ALONG	ACROSS
3.02	2.43

This space is intentionally left blank.

This space is intentionally left blank.

This space is intentionally left blank.

