

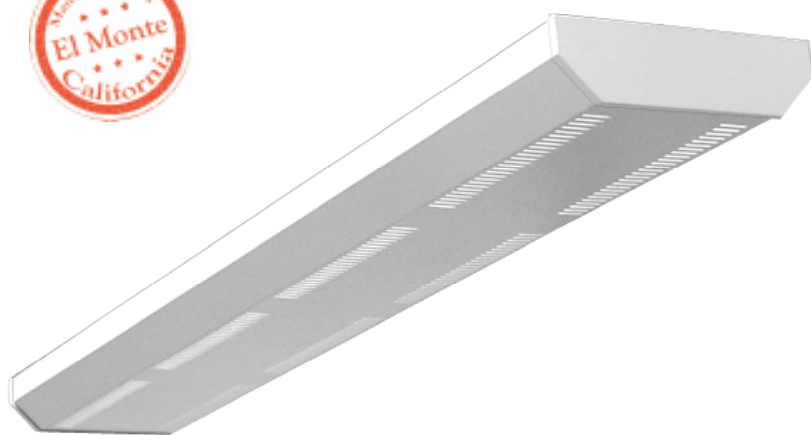


ARCHITECTURAL

PID200 SERIES



Pendant Mounted Indirect Luminaire



The PID200 series provides a comfortable and uniform indirect ambient illumination throughout the space, and reduces the reflected glare typically found on computer screens. The clean, simple and compact profile will go with many different types of interior styles.

The PID200 series creates an environment with a high level of visual comfort and is an ideal luminaire for office areas, libraries, conference rooms and classrooms.

- Pendant Mounted Indirect Luminaire
- Die Cast Aluminum End Caps
- Wide Distribution Light Pattern
- Row Mountable
- Suitable for Damp Locations
- Available with:
 - Fluorescent, LED and LED T8 (Internally Driven)
 - Custom Colors
 - Straight Slots / Round Holes Patterns
 - Emergency Battery Pack
 - Row Mtg. Joiner with Canopy / Cable
 - Stem or Cable Suspension Systems



Photometric Data and IES Files are Available on www.lalighting.com

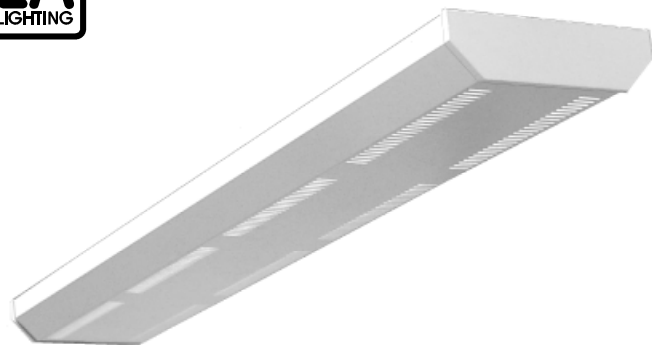


LOS ANGELES LIGHTING MFG. CO.

10141 OLNEY ST. / EL MONTE, CA 91731

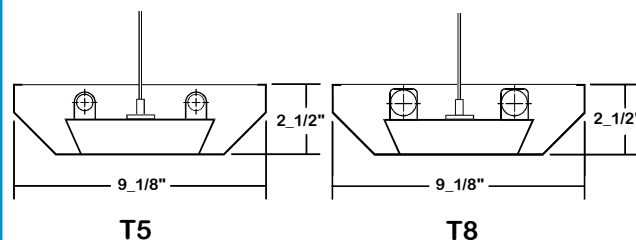
TEL : 626-454-8300 FAX : 626-454-8399

www.lalighting.com



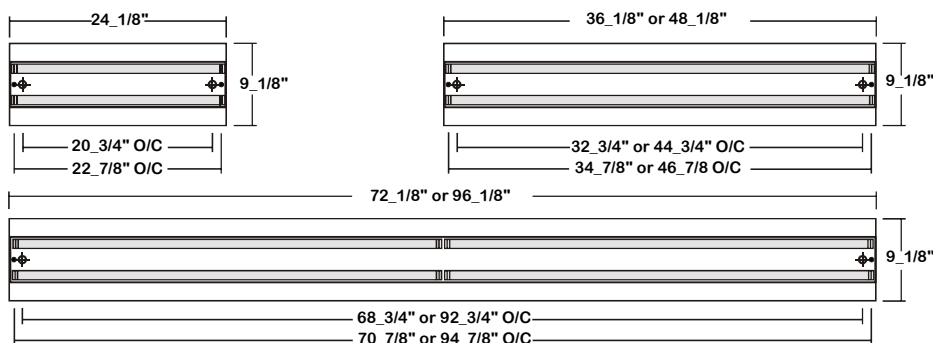
PID200 SERIES

CROSS SECTION



BACK PLATE

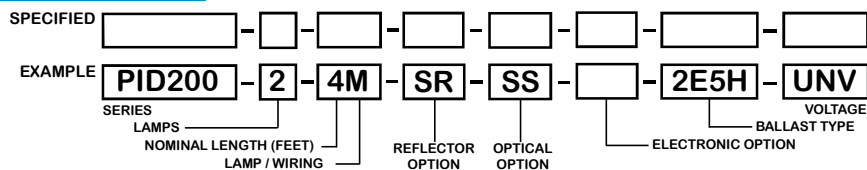
- 11/16" K.O.
- ⊕ 7/8" K.O.



CATALOG NUMBER

	NOMINAL LENGTH	TOTAL LAMPS		NOMINAL LENGTH	TOTAL LAMPS
PID200-2-2M	2'	2	PID200-2-2R	2'	2
PID200-2-3M	3'	2	PID200-2-3R	3'	2
PID200-2-4M	4'	2	PID200-2-4R	4'	2
PID200-2-6MT	6'	4	PID200-2-6RT	6'	4
PID200-2-8MT	8'	4	PID200-2-8RT	8'	4

ORDERING GUIDE



NOTE: LAMP/WIRING*
 M= Miniature Bi-Pin T5
 R = Medium Bi-Pin T8
 MT= Miniature Bi-Pin T5, Tandem Wiring
 RT = Medium Bi-Pin T8, Tandem Wiring

OPTIONS AND ACCESSORIES

<ul style="list-style-type: none"> ● REFLECTOR OPTIONS Specular Aluminum Reflector (95%) 	SUFFIX SR	<ul style="list-style-type: none"> ● ELECTRICAL OPTIONS Emergency Battery Pack External Line Fusing (HLR/GLR) 	SUFFIX BP* ELF	<ul style="list-style-type: none"> ● BALLAST OPTIONS Electronic T5 Electronic T5HO Electronic Step Dimming T5HO Electronic T8 Electronic Step Dimming T8 	SUFFIX E5* E5H ESDM5H E8* ESDM8*
<ul style="list-style-type: none"> ● OPTICAL OPTIONS Straight Slots Round Holes 	SUFFIX SS RH			<ul style="list-style-type: none"> ● ACCESSORIES Blank Canopy With Cable Feed-In Canopy With Straight White Cord Fixture Suspension System Row Mount Joiner 	CAT. NO. 433B-48 444F-48SWC * RMJ

NOTE: Other shapes available

*See Appropriate Reference Page

SPECIFICATIONS

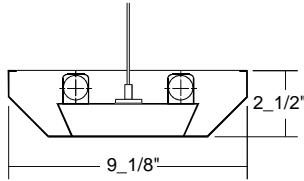
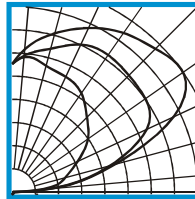
- TYPE: 2-lamp indirect suspended mounted luminaire.
- CONSTRUCTION: 22 ga. cold rolled steel welded housing.
- FINISH: Textured matte white powder coated finish, minimum reflectance 90%, painted after fabrication.
- OPTICS: Straight slots opening and round holes opening are standard, other shapes available.
- WIRING: 120v 60Hz., 277v 60Hz., UNV (universal voltage 120v thru 277v.) or as otherwise specified.
- LABELS: U.L. Listed. Suitable for damp locations.



PHOTOMETRIC DATA

PID200-2-4R-SS-E8

TEST NO.=LA-T0605
 LAMP TYPE=F032T8
 NO. OF LAMP=2
 LUMENS PER LAMP=2900
 WATTS PER LAMP=32
 BALLAST FACTOR=1
 PHOTOMETRY TYPE=C



CANDLEPOWER

ANGLE	END	45	CROSS
0	7	7	7
5	8	8	9
15	8	12	15
25	8	14	12
35	8	11	11
45	8	10	14
55	7	11	11
65	4	8	6
75	3	4	2
85	1	1	1
90	13	18	21
95	191	252	271
105	356	656	690
115	470	967	1161
125	602	1059	1359
135	688	1074	1319
145	786	1090	1265
155	828	1060	1179
165	852	966	1070
175	882	892	933
180	835	835	835

ZONAL LUMEN SUMMARY

DEGREES	LUMENS	% LAMP	% FIXTURE
0-30	10	0.2	0.2
0-40	16	0.3	0.3
0-60	33	0.6	0.7
0-90	49	0.8	1.0
90-120	1710	29.5	34.3
90-150	4094	70.6	82.2
90-180	4930	85.0	99.0
0-180	4979	85.8	100.0

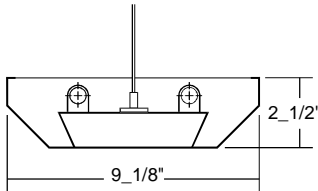
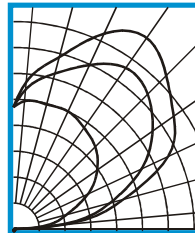
Lumen Output = 4979 lumens
 Luminaire Efficiency = 85.82%

SPACING CRITERION

ALONG	ACROSS
1.83	2.38

PID200-2-4M-SS-E5H

TEST NO.=LA-T0604
 LAMP TYPE=F54T5HO
 NO. OF LAMP=2
 LUMENS PER LAMP=5000
 WATTS PER LAMP=54
 BALLAST FACTOR=1
 PHOTOMETRY TYPE=C



CANDLEPOWER

ANGLE	END	45	CROSS
0	5	5	5
5	7	7	19
15	10	10	25
25	16	16	24
35	17	17	13
45	15	15	23
55	11	11	18
65	9	9	13
75	8	8	4
85	4	4	1
90	31	31	24
95	311	311	583
105	616	616	1278
115	924	924	1916
125	1148	1148	2195
135	1299	1299	2425
145	1381	1381	2607
155	1450	1450	2409
165	1441	1441	1988
175	1434	1434	1649
180	1360	1360	1360

ZONAL LUMEN SUMMARY

DEGREES	LUMENS	% LAMP	% FIXTURE
0-30	18	0.2	0.2
0-40	28	0.3	0.3
0-60	58	0.6	0.6
0-90	85	0.8	0.9
90-120	2986	29.9	32.8
90-150	7453	74.5	81.9
90-180	9012	90.1	99.1
0-180	9097	91.0	100.0

Lumen Output = 9097 lumens
 Luminaire Efficiency = 91.0%

SPACING CRITERION

ALONG	ACROSS
2.63	3.15

This space is intentionally left blank.

This space is intentionally left blank.

