

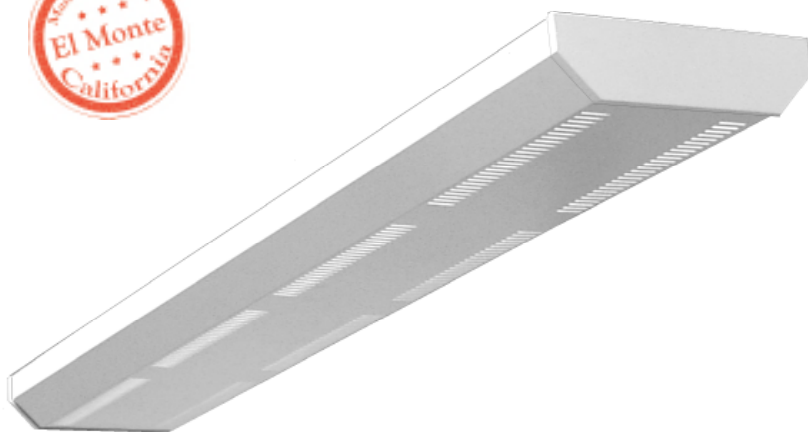


# ARCHITECTURAL

## PID200 SERIES



### Pendant Mounted Indirect Luminaire



The PID200 series provides a comfortable and uniform indirect ambient illumination throughout the space, and reduces the reflected glare typically found on computer screens. The clean, simple and compact profile will go with many different types of interior styles.

The PID200 series creates an environment with a high level of visual comfort and is an ideal luminaire for office areas, libraries, conference rooms and classrooms.

- Pendant Mounted Indirect Luminaire
- Die Cast Aluminum End Caps
- Wide Distribution Light Pattern
- Row Mountable
- Suitable for Damp Locations
- Available with:
  - Fluorescent, LED and LED T8 (Internally Driven)
  - Custom Colors
  - Straight Slots / Round Holes Patterns
  - Emergency Battery Pack
  - Row Mtg. Joiner with Canopy / Cable
  - Stem or Cable Suspension Systems



Photometric Data and IES Files are Available on [www.lalighting.com](http://www.lalighting.com)



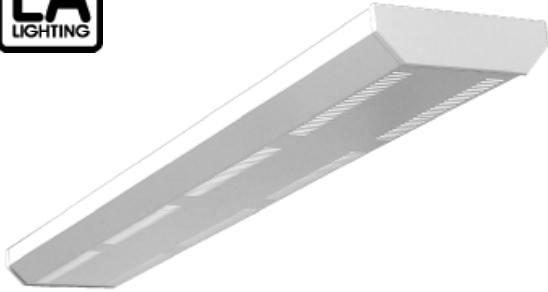
**LOS ANGELES LIGHTING MFG. CO.**

10141 OLNEY ST. / EL MONTE, CA 91731

TEL : 626-454-8300 FAX : 626-454-8399

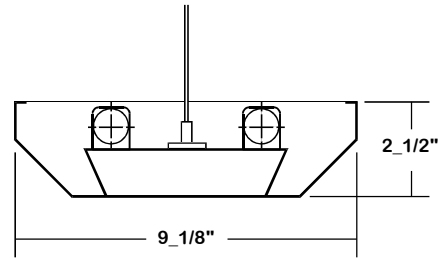
[www.lalighting.com](http://www.lalighting.com)

# ARCHITECTURAL - LED T8 (Internally Driven)



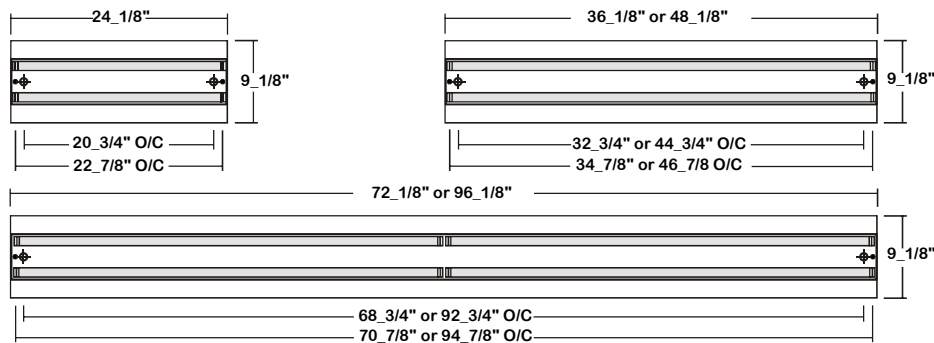
## PID200 SERIES - LED T8

### CROSS SECTION



### TOP VIEW

- 11/16" K.O.
- ⊕ 7/8" K.O.



### CATALOG NUMBER

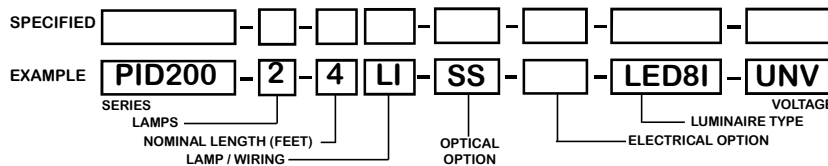
	NOMINAL LENGTH	TOTAL MODULES		NOMINAL LENGTH	TOTAL MODULES
PID200-2-2Lx	2'	2	PID200-2-6LxT	6'	4
PID200-2-3Lx	3'	2	PID200-2-8LxT	8'	4
PID200-2-4Lx	4'	2			

### TS2 - LED Luminaire On/Off Safety Switch



- Easily accessible on exterior of wire way.
- Allows individual fixture to be switched ON/OFF during re-lamping or Maintenance.
- Prevents damage to lamp and electrical shock during lamping and re-lamping.
- Allows safe entry to wire way channel where power connector can be disconnected for maintenance to fixture.

### ORDERING GUIDE



### LAMP / WIRING

**LI = LED T8 internal driver light tube.**  
Both ends powered.  
Shunted sockets used.



**LR = LED T8 internal driver light tube.**  
Single end powered.  
Non-shunted sockets used.



### OPTIONS AND ACCESSORIES

#### OPTICAL OPTIONS

Option	SUFFIX
Straight Slots	SS
Round Holes	RH

NOTE: Other shapes available

#### ELECTRICAL OPTIONS

Option	SUFFIX
LED Luminaire ON/OFF Safety Switch	TS2

#### ACCESSORIES

Accessory	CAT. NO.
Blank Canopy With Cable	433B-48
Feed-In Canopy With Straight White Cord	444F-48SWC
Row Mount Joiner With Canopy / Cable	RMJ
Stem & Canopies Suspension System	*

\*See appropriate reference page

### SPECIFICATIONS

- **TYPE** 2-lamp indirect suspended mounted luminaire, for LED T8 internally driven light tube(s)\*\*.
- **CONSTRUCTION** 20 ga. cold rolled steel welded housing.
- **FINISH** Textured matte white powder coated finish, minimum reflectance 90%, painted after fabrication.
- **OPTICS** Straight slots opening and round holes opening are standard, other shapes available.
- **WIRING** Operate LED T8 internally driven light tube(s)\*\*.
- **LABELS** Suitable for damp locations.

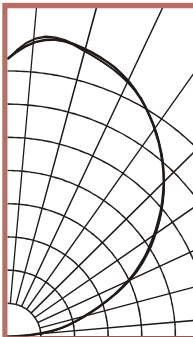
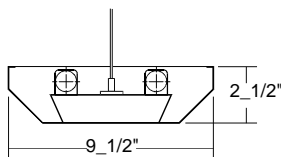
\*\* Lamp(s) by others.



**PHOTOMETRIC DATA**

**PID200-2-4Lx-SS-LED8x-UNV**

TEST NO.=LA-T2249  
 LAMP TYPE=LED T8 Internally Driven Light Tube\*  
 NO. OF LAMP=2  
 LUMENS PER LAMP=1700  
 WATTS PER LAMP=18.5  
 PHOTOMETRY TYPE=C  
 \* Test with major manufacturer's  
 LED T8 light tube(s), consult  
 L.A. Lighting for details.



**CANDLEPOWER**

ANGLE	END	45	CROSS
0	0	0	0
5	0	0	0
15	0	0	0
25	0	0	0
35	0	0	0
45	0	0	0
55	0	0	0
65	0	0	0
75	0	0	0
85	0	0	0
90	9	4	2
95	114	112	109
105	279	277	276
115	468	460	460
125	626	624	618
135	766	763	763
145	888	885	885
155	980	982	986
165	1034	1030	1039
175	1043	1040	1030
180	969	969	969

**ZONAL LUMEN SUMMARY**

DEGREES	LUMENS	% LAMP	% FIXTURE
0-30	0	0	0
0-40	0	0	0
0-60	0	0	0
0-90	1	0	0
90-120	845	24.8	24.9
90-150	2552	75	75.1
90-180	3398	99.9	100
0-180	3399	100	100

Lumen Output = 3399 lumens  
 Luminaire Efficiency = 100%

This space is intentionally left blank.

This space is intentionally left blank.

This space is intentionally left blank.

