



ARCHITECTURAL

PID300 SERIES



Pendant Mounted Indirect Luminaire



- Pendant Mounted Indirect Luminaire
- Die Cast Aluminum End Caps
- Wide Distribution Light Pattern
- Row Mountable
- Suitable for Damp Locations
- Available with:
 - Fluorescent, LED and LED T8 (Internally Driven)
 - Custom Colors
 - Straight Slots / Round Holes Patterns
 - Emergency Battery Pack
 - Row Mtg. Joiner with Canopy / Cable
 - Stem or Cable Suspension Systems



Photometric Data and IES Files are Available on www.lalighting.com



LOS ANGELES LIGHTING MFG. CO.

10141 OLNEY ST. / EL MONTE, CA 91731

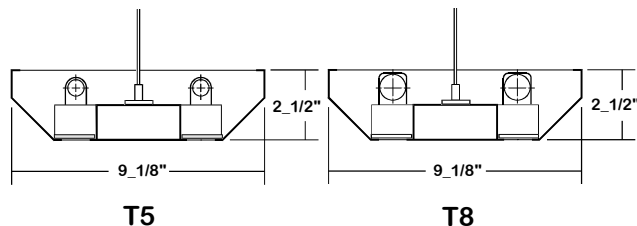
TEL : 626-454-8300 FAX : 626-454-8399

www.lalighting.com



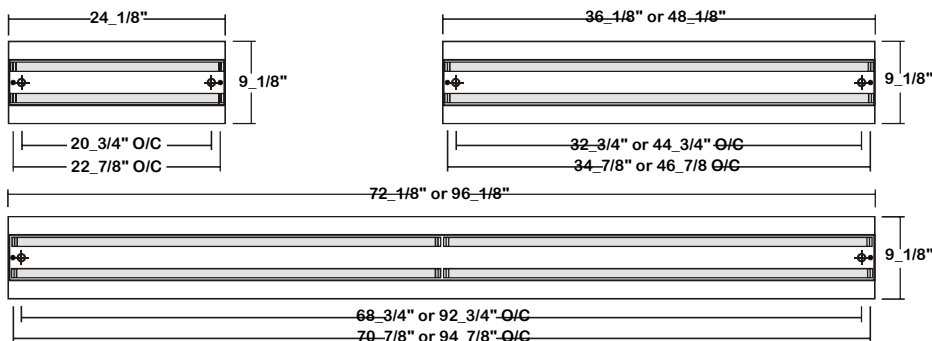
PID300 SERIES

CROSS SECTION



BACK PLATE

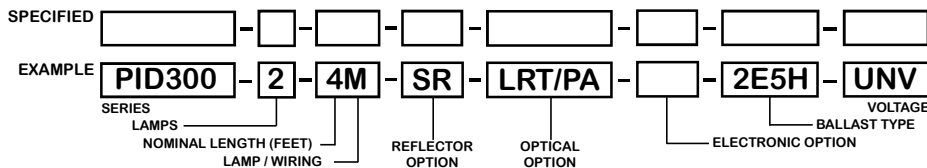
- 11/16" K.O.
- ⊕ 7/8" K.O.



CATALOG NUMBER

	NOMINAL LENGTH	TOTAL LAMPS		NOMINAL LENGTH	TOTAL LAMPS
PID300-2-2M	2'	2	PID300-2-2R	2'	2
PID300-2-3M	3'	2	PID300-2-3R	3'	2
PID300-2-4M	4'	2	PID300-2-4R	4'	2
PID300-2-6MT	6'	4	PID300-2-6RT	6'	4
PID300-2-8MT	8'	4	PID300-2-8RT	8'	4

ORDERING GUIDE



NOTE: LAMP/WIRING*
 M= Miniature Bi-Pin T5
 R = Medium Bi-Pin T8
 MT= Miniature Bi-Pin T5, Tandem Wiring
 RT = Medium Bi-Pin T8, Tandem Wiring

OPTIONS AND ACCESSORIES

<ul style="list-style-type: none"> ● REFLECTOR OPTIONS Specular Aluminum Reflector (95%) 	SUFFIX SR	<ul style="list-style-type: none"> ● ELECTRICAL OPTIONS Emergency Battery Pack External Line Fusing (HLR/GLR) 	SUFFIX BP* ELF	<ul style="list-style-type: none"> ● BALLAST OPTIONS Electronic T5 Electronic T5HO Electronic Step Dimming T5HO Electronic T8 Electronic Step Dimming T8 	SUFFIX E5* E5H ESDM5H E8* ESDM8*
<ul style="list-style-type: none"> ● OPTICAL OPTIONS Short Radius-Rectangular Slots Long Radius-Rectangular Slots Clear Prismatic Acrylic Flat White Acrylic Paracube Silver (1 1/2 x 1 1/2 x 1) 	SUFFIX SRT LRT PA FWA P2S	*See Appropriate Reference Page		<ul style="list-style-type: none"> ● ACCESSORIES Blank Canopy With Cable Feed-In Canopy With Straight White Cord Fixture Suspension System Row Mount Joiner 	CAT. NO. 433B-48 444F-48SWC * RMJ

SPECIFICATIONS

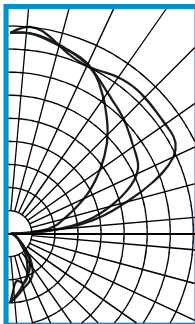
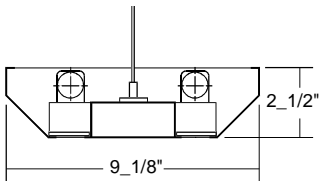
- **TYPE** 2-lamp indirect suspended mounted luminaire.
- **CONSTRUCTION** 22 ga. cold rolled steel welded housing.
- **FINISH** Textured matte white powder coated finish, minimum reflectance 90%, painted after fabrication.
- **OPTICS** Radius rectangular slotted standard.
- **WIRING** 120v 60Hz., 277v 60Hz., UNV (universal voltage 120v thru 277v.) or as otherwise specified.
- **LABELS** U.L. Listed. Suitable for damp locations.



PHOTOMETRIC DATA

PID300-2-4R-LRT/PA-E8

TEST NO.=LA-T0611
 LAMP TYPE=F032T8
 NO. OF LAMP=2
 LUMENS PER LAMP=2900
 WATTS PER LAMP=32
 BALLAST FACTOR=1
 PHOTOMETRY TYPE=C



CANDLEPOWER

ANGLE	END	45	CROSS
0	379	379	379
5	353	346	281
15	306	286	282
25	274	239	225
35	209	187	152
45	117	112	85
55	58	56	50
65	35	29	28
75	17	17	7
85	4	6	7
90	15	20	22
95	158	247	275
105	303	566	658
115	443	770	992
125	600	831	1048
135	759	888	1056
145	900	943	1050
155	1028	1022	1018
165	1070	1076	1070
175	1112	1112	1147
180	1109	1109	1109

ZONAL LUMEN SUMMARY

DEGREES	LUMENS	% LAMP	% FIXTURE
0-30	227	3.9	4.6
0-40	343	5.9	6.9
0-60	475	8.2	9.6
0-90	533	9.2	10.8
90-120	1486	25.6	30.1
90-150	3527	60.8	71.3
90-180	4411	76.0	89.2
0-180	4943	85.2	100.0

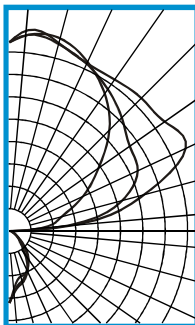
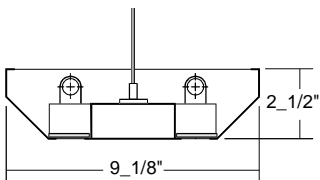
Lumen Output = 4943 lumens
 Luminaire Efficiency = 85.2%

SPACING CRITERION

ALONG	ACROSS
0.99	0.82

PID300-2-4M-LRT/PA-E5H

TEST NO.=LA-T0610
 LAMP TYPE=F54T5HO
 NO. OF LAMP=2
 LUMENS PER LAMP=5000
 WATTS PER LAMP=54
 BALLAST FACTOR=1
 PHOTOMETRY TYPE=C



CANDLEPOWER

ANGLE	END	45	CROSS
0	690	690	690
5	576	588	548
15	488	508	447
25	403	414	414
35	320	307	251
45	206	182	143
55	98	94	88
65	48	47	48
75	28	28	26
85	7	10	14
90	26	34	30
95	286	526	603
105	515	1118	1334
115	775	1359	1867
125	1042	1412	1824
135	1357	1529	1798
145	1600	1653	1770
155	1785	1765	1774
165	1910	1855	1862
175	1885	1888	1933
180	1811	1811	1811

ZONAL LUMEN SUMMARY

DEGREES	LUMENS	% LAMP	% FIXTURE
0-30	384	3.8	4.4
0-40	570	5.7	6.5
0-60	792	7.9	9.0
0-90	885	8.8	10.1
90-120	2816	28.2	32.1
90-150	6343	63.4	72.4
90-180	7874	78.7	89.9
0-180	8759	87.6	100.0

Lumen Output = 8759 lumens
 Luminaire Efficiency = 87.6%

SPACING CRITERION

ALONG	ACROSS
0.79	0.78

This space is intentionally left blank.

This space is intentionally left blank.

