



# IN-STOCK PRODUCT SCHEDULE

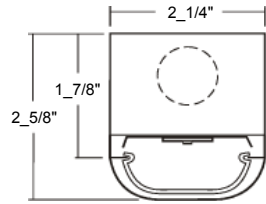
FOR IMMEDIATE SHIPMENT OR PICK-UP! - WWW.LALIGHTING.COM



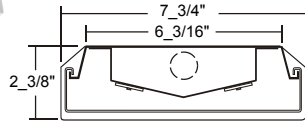
REPRESENTED BY: L.A. LIGHTING / (626) 454-8300

INQUIRIES: customerservice@lalighting.com / ORDERS: orders@lalighting.com

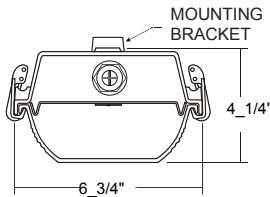
AS OF 05/04/2017



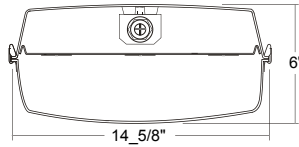
VIEW DETAILS



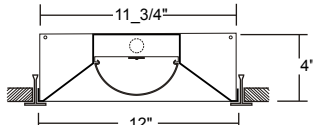
VIEW DETAILS



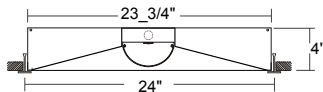
VIEW DETAILS



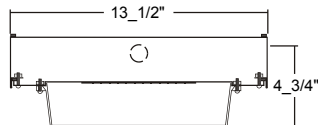
VIEW DETAILS



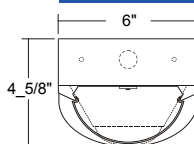
VIEW DETAILS



VIEW DETAILS



VIEW DETAILS



VIEW DETAILS

### LED Strip with Diffuser (One Per Carton) 4000°K

Fluorescent Equivalent

3-STW100-2K-2L-1DRDM-UNV-1/840	(2) F17T8, (1) F24T5HO
3-STW100-2K-4L-1DRDM-UNV-1/840	(1) F32T8
3-STW100-4K-4L-1DRDM-UNV-1/840	(2) F32T8, (1) F54T5HO
3-STW100-4K-8L-1DRDM-UNV-1/840	(2) F32T8
3-STW100-8K-8L-1DRDM-UNV-1/840	(4) F32T8, (2) F54T5HO
Additional Color Temperatures and Lumen Packages Available	
5-7 Working Days Lead Time	

BPL BATTERY PACK (4L & 8L ONLY) (7-10 Working Days Lead Time)

### LED Wraparound (One Per Carton) 4000°K

Fluorescent Equivalent

3-WAN107-4K-4L-FPA-1DRDM-UNV-2/840	(2) F32T8, (1) F54T5HO
Additional Color Temperatures and Lumen Packages Available	
5-7 Working Days Lead Time	

BPL BATTERY PACK (7-10 Working Days Lead Time)

### LED Vapor Tight Wet Location (One Per Carton) 4000°K

Fluorescent Equivalent

4-CIT200-4K-4L-DRRLFR-WL-1DRDM-UNV-1/840	(2) F32T8, (1) F54T5HO
4-CIT200-8K-8L-DRRLFR-WL-1DRDM-UNV-1/840 *	(4) F32T8, (2) F54T5HO
Additional Color Temperatures and Lumen Packages Available	
5-7 Working Days Lead Time	

CIT2/SSL4 STAINLESS STEEL LATCHES FOR 4' CIT200 (Set)

CIT2/SSL8 STAINLESS STEEL LATCHES FOR 8' CIT200 (Set)

CIT2/SSVH STAINLESS STEEL CHAIN MOUNT V-HOOK (Set of 2)

BPL BATTERY PACK (7-10 Working Days Lead Time)

### LED Vapor Tight Wet Location (One Per Carton) 5000°K

Lumen Equivalent

4-CIT400-16K-4L-DRFA-WL-1DRDM-UNV-2/850	400 W (MH), (4) F54T5HO
4-CIT400-24K-4L-DRFA-WL-1DRDM-UNV-2/850HT **	750 W (MH), (6) F54T5HO
Additional Color Temperatures and Lumen Packages Available	
5-7 Working Days Lead Time	

CIT4/VH STAINLESS STEEL V-HOOK (Set of 2)

CIT4/CM CEILING MOUNT HANGER (Set of 2)

CIT4/LT LENS TETHER (FIELD INSTALLED) (Set of 2)

BPL BATTERY PACK (7-10 Working Days Lead Time)

### LED Direct Recessed T-Bar (1x4 / One Per Carton) 4000°K

Fluorescent Equivalent

3-GDC310-2K-4L-1DRDM-UNV-1/840	(1) F32T8
3-GDC310-4K-4L-1DRDM-UNV-1/840 *	(2) F32T8, (1) F54T5HO
Additional Color Temperatures and Lumen Packages Available	
5-7 Working Days Lead Time	

BPL BATTERY PACK (7-10 Working Days Lead Time)

### LED Direct Recessed T-Bar (2x2, 2x4 / One Per Carton) 4000°K

Fluorescent Equivalent

3-GDC320-3K-2L-1DRDM-UNV-1/840	(3) F17T8
3-GDC320-4K-4L-1DRDM-UNV-1/840 *	(2) F32T8, (1) F54T5HO
Additional Color Temperatures and Lumen Packages Available	
5-7 Working Days Lead Time	

BPL BATTERY PACK (7-10 Working Days Lead Time)

### LED Canopy / Surface Security Wet Location (One Per Carton) 4000°K

BCL100-1-1L-DRCDM740-UNV-840 * (3000 Lumen)	
BCL100-1-1L-DRCDM1050-UNV-840 * (4000 Lumen)	
Additional Color Temperatures and Lumen Packages Available	
5-7 Working Days Lead Time	

TP TAMPER PROOF SCREWS (Set)

BPL BATTERY PACK (7-10 Working Days Lead Time)

### LED Radial Wrap (50% Variable Dimming) (One Per Carton) 4000°K

Fluorescent Equivalent

3-WSE251-4K-4L-MSPCD2B-1DRDM-UNV-1/840	(2) F32T8, (1) F54T5HO
Additional Color Temperatures and Lumen Packages Available	
5-7 Working Days Lead Time	

BPL BATTERY PACK (7-10 Working Days Lead Time)



### Los Angeles Lighting Mfg. Co.

Headquarters  
10141 Olney Street  
El Monte, CA 91731  
Made in the USA

Contact Us  
T: 626-454-8300  
F: 626-454-8399  
www.lalighting.com

- Prices are subject to change without notice.
- Freight prepaid and allowed for orders \$1,500.00 or more per shipment within Los Angeles and Orange Counties only.
- DesignLights Consortium® (DLC) qualified product.\*
- DesignLights Consortium® (DLC Premium) qualified product.\*\*



# IN-STOCK PRODUCT SCHEDULE

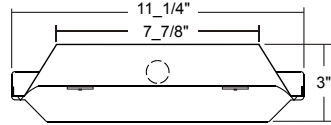
FOR IMMEDIATE SHIPMENT OR PICK-UP! - WWW.LALIGHTING.COM



REPRESENTED BY: L.A. LIGHTING / (626) 454-8300

INQUIRIES: customerservice@lalighting.com / ORDERS: orders@lalighting.com

AS OF 05/04/2017

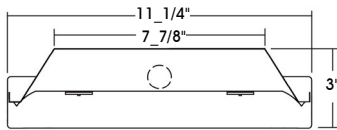


VIEW CUT SHEET

### LED High Bay (One Per Carton) 5000°K

Lumen Equivalent

1-HBN100-12K-4L-1DRDM-UNV-2/850	250 W (MH), (6) F32T8, (3) F54T5HO
1-HBN100-16K-4L-2DRDM-UNV-2/850 *	400 W (MH), (4) F54T5HO
Additional Color Temperatures and Lumen Packages Available	
5-7 Working Days Lead Time	
WG11-HBN100	11 GAUGE WIRE GUARD (Each)
YTCS10	10' Y-TOGGLE END CABLE W/ SELF-LOCKING DEVICE (Set of 2)
MS	MOTION SENSOR - ON/OFF (5-10 Working Days Lead Time)
MSPC	MOTION SENSOR PHOTOCELL - ON/OFF (5-10 Working Days Lead Time)
BPL	BATTERY PACK (7-10 Working Days Lead Time)
CONTACT THE FACTORY FOR OTHER MOTION SENSOR OPTIONS	

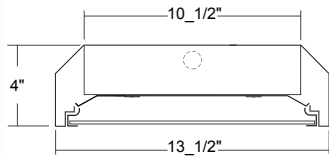


VIEW DETAILS

### LED High Bay (One Per Carton) 5000°K

Lumen Equivalent

3-HBN100-12K-2L-1DRDM-UNV-2/850HT **	250 W (MH), (6) F24T5HO, (3) F54T5HO
3-HBN100-12K-4L-1DRDM-UNV-1/850HT	250 W (MH), (6) F32T8, (3) F54T5HO
3-HBN100-16K-4L-2DRDM-UNV-2/850HT **	400 W (MH), (4) F54T5HO
3-HBN100-24K-4L-1DRDM-UNV-2/850HT **	400 W (MH), (6) F54T5HO
3-HBN100-12K-2L-PA-1DRDM-UNV-2/850HT **	250 W (MH), (6) F24T5HO, (3) F54T5HO
3-HBN100-12K-4L-PA-1DRDM-UNV-1/850HT	250 W (MH), (6) F32T8, (3) F54T5HO
3-HBN100-16K-4L-PA-2DRDM-UNV-2/850HT **	400 W (MH), (4) F54T5HO
3-HBN100-24K-4L-PA-1DRDM-UNV-2/850HT **	750 W (MH), (6) F54T5HO
Additional Color Temperatures and Lumen Packages Available	
5-7 Working Days Lead Time	
WG11-HBN100	11 GAUGE WIRE GUARD (NOT AVAILABLE WITH PA LENS) (Each)
YTCS10	10' Y-TOGGLE END CABLE W/ SELF-LOCKING DEVICE (Set of 2)
MS	MOTION SENSOR - ON/OFF (5-10 Working Days Lead Time)
MSPC	MOTION SENSOR PHOTOCELL - ON/OFF (5-10 Working Days Lead Time)
BPL	BATTERY PACK (7-10 Working Days Lead Time)
CONTACT THE FACTORY FOR OTHER MOTION SENSOR OPTIONS	

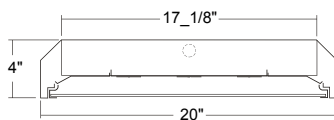


VIEW DETAILS

### LED High Bay w/ Lensed Door (One Per Carton) 5000°K

Lumen Equivalent

2-EBY150-12K-4L-CA-1DRDM-UNV-2/850	250 W (MH), (6) F32T8, (3) F54T5HO
2-EBY150-16K-4L-CA-2DRDM-UNV-2/850 *	400 W (MH), (4) F54T5HO
Additional Color Temperatures and Lumen Packages Available	
5-7 Working Days Lead Time	
YTCS10	10' Y-TOGGLE END CABLE W/ SELF-LOCKING DEVICE (Set of 2)
MS	MOTION SENSOR - ON/OFF (5-10 Working Days Lead Time)
MSPC	MOTION SENSOR PHOTOCELL - ON/OFF (7.5-10 Working Days Lead Time)
BPL	BATTERY PACK (7-10 Working Days Lead Time)
CONTACT THE FACTORY FOR OTHER MOTION SENSOR OPTIONS	

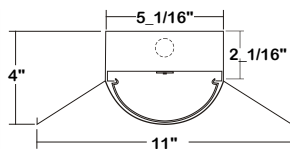


VIEW DETAILS

### LED High Bay w/ Lensed Door (One Per Carton) 5000°K

Lumen Equivalent

2-EBY350-24K-4L-CA-2DRDM-UNV-3/850 **	750 W (MH), (6) F54T5HO
Additional Color Temperatures and Lumen Packages Available	
5-7 Working Days Lead Time	
YTCS10	10' Y-TOGGLE END CABLE W/ SELF-LOCKING DEVICE (Set of 2)
MS	MOTION SENSOR - ON/OFF (5-10 Working Days Lead Time)
MSPC	MOTION SENSOR PHOTOCELL - ON/OFF (5-10 Working Days Lead Time)
BPL	BATTERY PACK (7-10 Working Days Lead Time)
CONTACT THE FACTORY FOR OTHER MOTION SENSOR OPTIONS	



VIEW DETAILS

### LED Industrial (One Per Carton) 4000°K

Fluorescent Equivalent

3-INW200-4K-4L-1DRDM-UNV-1/840	(2) F32T8, (1) F54T5HO
3-INW200-8K-8L-1DRDM-UNV-1/840	(4) F32T8, (2) F54T5HO
Additional Color Temperatures and Lumen Packages Available	
5-7 Working Days Lead Time	
MS	MOTION SENSOR - ON/OFF (5-10 Working Days Lead Time)
MSPC	MOTION SENSOR PHOTOCELL - ON/OFF (5-10 Working Days Lead Time)
BPL	BATTERY PACK (7-10 Working Days Lead Time)
CONTACT THE FACTORY FOR OTHER MOTION SENSOR OPTIONS	



## Los Angeles Lighting Mfg. Co.

Headquarters  
10141 Olney Street  
El Monte, CA 91731  
Made in the USA

Contact Us  
T: 626-454-8300  
F: 626-454-8399  
www.lalighting.com

- Prices are subject to change without notice.
- Freight prepaid and allowed for orders \$1,500.00 or more per shipment within Los Angeles and Orange Counties only.
- DesignLights Consortium® (DLC) qualified product.\*
- DesignLights Consortium® (DLC Premium) qualified product.\*\*