

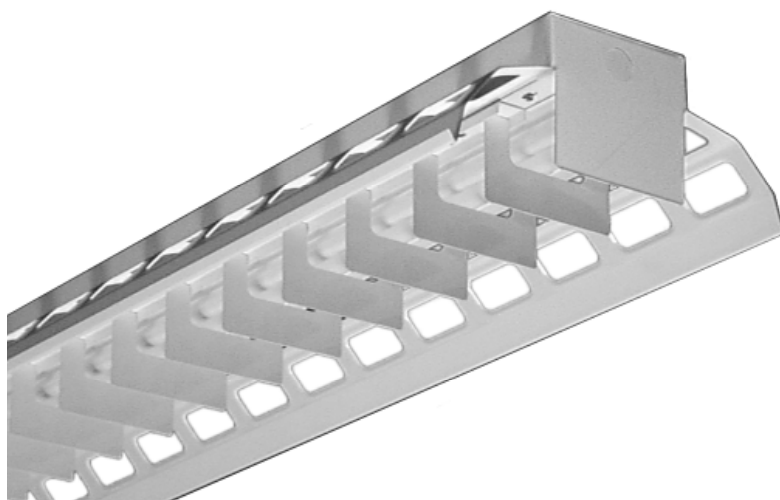


ARCHITECTURAL

ABI200 SERIES



T5 Baffled Retail Luminaire



- T5 Baffled Retail Luminaire
- Industrial Appearance
- Welded And Painted After Fabrication
- Row Mountable
- Available with:
 - Custom Colors
 - Closed or Slotted Reflector
 - Solid or Perforated Baffled Louver
 - Emergency Battery Pack



Photometric Data and IES Files are Available on www.lalighting.com

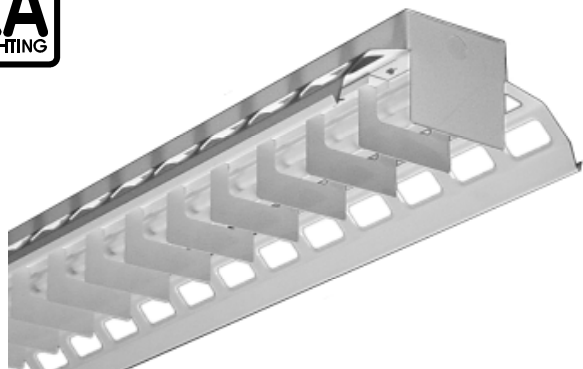


LOS ANGELES LIGHTING MFG. CO.

10141 OLNEY ST. / EL MONTE, CA 91731

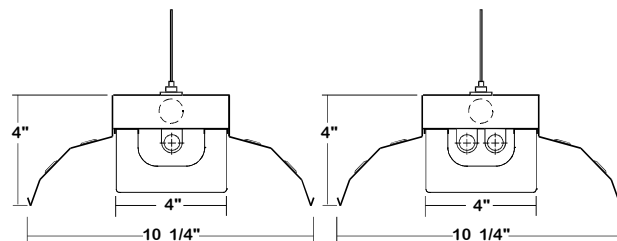
TEL : 626-454-8300 FAX : 626-454-8399

www.lalighting.com



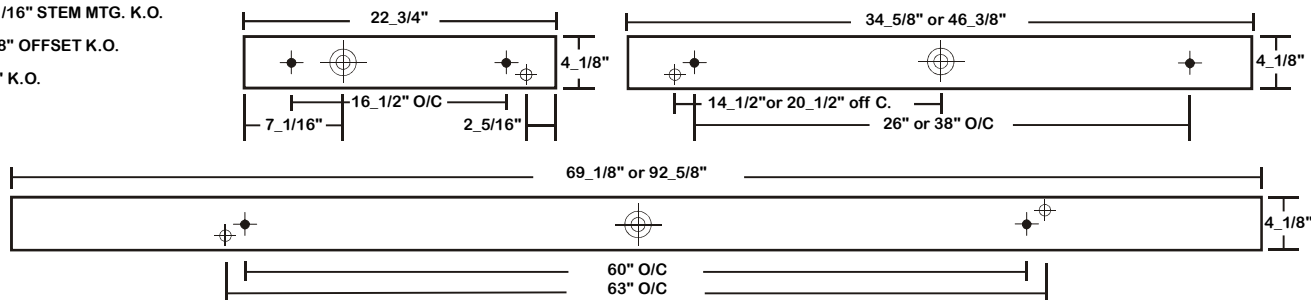
ABI200 SERIES

CROSS SECTION



BACK PLATE

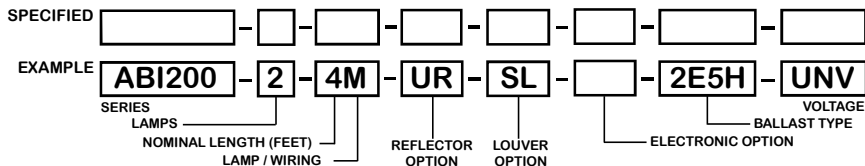
- ◆ 11/16" STEM MTG. K.O.
- ⊕ 7/8" OFFSET K.O.
- ⊕ 2" K.O.



CATALOG NUMBER

	NOMINAL LENGTH	TOTAL LAMPS		NOMINAL LENGTH	TOTAL LAMPS
ABI200-1-2M	2'	1	ABI200-2-2M	2'	2
ABI200-1-3M	3'	1	ABI200-2-3M	3'	2
ABI200-1-4M	4'	1	ABI200-2-4M	4'	2
ABI200-1-6MT	6'	2	ABI200-2-6MT	6'	4
ABI200-1-8MT	8'	2	ABI200-2-8MT	8'	4

ORDERING GUIDE



NOTE: LAMP/WIRING*
 M= Miniature Bi-Pin T5
 MT= Miniature Bi-Pin T5, Tandem Wiring

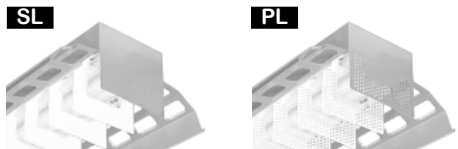
OPTIONS AND ACCESSORIES

REFLECTOR OPTIONS

Option	SUFFIX
Closed Reflector	CR
Slotted Reflector	UR

LOUVER OPTIONS

Option	SUFFIX
Solid Baffled Louvers	SL
Perforated Baffled Louvers	PL



*See Appropriate Reference Page

ELECTRICAL OPTIONS

Option	SUFFIX
Emergency Battery Pack	BP*
External Line Fusing (HLR/GLR)	ELF

BALLAST OPTIONS

Option	SUFFIX
Electronic Ballast T5	E5*
Electronic Ballast T5HO	E5H*

ACCESSORIES

Option	CAT. NO.
Fixture Suspension System	*

SPECIFICATIONS

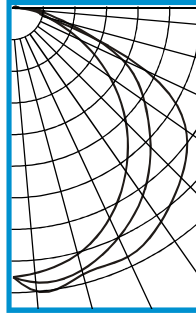
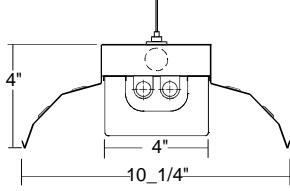
- **TYPE** Compact architectural baffled luminaire.
- **CONSTRUCTION** Cold rolled steel welded housing.
- **FINISH** Baked white powder coated finish standard, minimum reflectance 90%. Painted after fabrication. (Other colors available)
- **REFLECTOR** Slotted reflector standard, solid reflector available as specified.
- **OPTICS** Solid baffle louvers standard, perforated baffle louvers available.
- **WIRING** 120v 60Hz., 277v 60Hz., UNV (universal voltage 120v thru 277v.) or as otherwise specified.
- **LABELS** U.L. Listed. Suitable for damp locations.



PHOTOMETRIC DATA

ABI200-2-4M-UR-SL-E5

TEST NO.=LA-T0681
 LAMP TYPE=F028T5
 NO. OF LAMP=2
 LUMENS PER LAMP=2900
 WATTS PER LAMP=28
 BALLAST FACTOR=1
 PHOTOMETRY TYPE=C



CANDLEPOWER

ANGLE	END	45	CROSS
0	1354	1354	1354
5	1337	1386	1431
15	1278	1361	1383
25	1159	1267	1377
35	993	1143	1305
45	801	979	1200
55	588	804	1062
65	366	600	726
75	181	273	172
85	78	114	151
90	16	39	42
95	11	29	20
105	11	21	9
115	5	17	6
125	3	15	9
135	1	7	5
145	1	3	3
155	0	1	0
165	0	0	0
175	0	0	0
180	0	0	0

ZONAL LUMEN SUMMARY

DEGREES	LUMENS	% LAMP	% FIXTURE
0-30	1100	19.0	25.6
0-40	1820	31.4	42.4
0-60	3317	57.2	77.2
0-90	4227	72.9	98.4
90-120	54	0.9	1.3
90-150	69	1.2	1.6
90-180	69	1.2	1.6
0-180	4296	74.1	100.0

Lumen Output = 4296 lumens
 Luminaire Efficiency = 74.1%

SPACING CRITERION

ALONG	ACROSS
1.18	1.46

This space is intentionally left blank.

This space is intentionally left blank.

This space is intentionally left blank.

