



RECESSED LED

GIC110 (1X4) SERIES

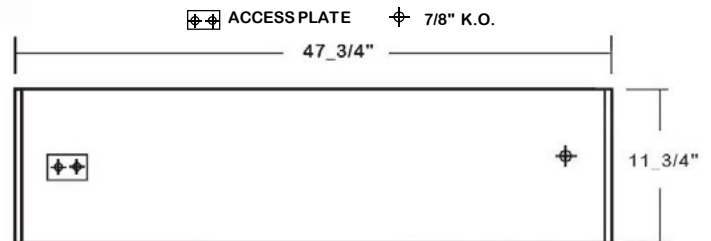
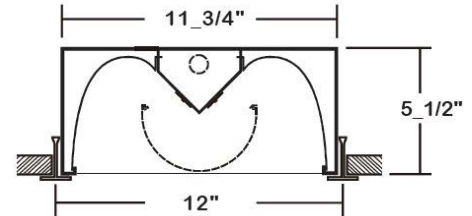
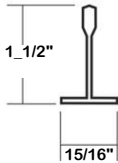
INDIRECT / DIRECT ILLUMINATED CENTER BASKET GRID LUMINAIRE

DATE	
JOB	

WWW.LALIGHTING.COM
626-454-8300

RECESSED MOUNTED LED LUMINAIRE FOR INVERTED T-BAR CEILINGS

DIMENSIONS



APPLICATIONS

- Commercial, Office

FEATURES

- 0-10V dimming driver standard
- Supports California Title 24 compliance

OPTIONS

- Full customization available upon request
- Additional lumen packages and color temperatures available
- Wireless control options available
- Emergency battery pack available

SPECIFICATIONS

CONSTRUCTION

- 22 ga. cold rolled steel housing (20 ga. housing available as specified)

FINISH

- Baked white polyester finish (powder coated finish available) / minimum reflectance 86%
- Reflectors: high reflectance low gloss matte white finish

OPTICAL

- Perforated center-mount steel / white acrylic overlay with polyethylene protective trim

ELECTRICAL

- High efficiency drivers coupled with long-life LEDs
- Service life greater than 50,000 hours (L70)
- Universal voltage 120V through 277V (347V / 480V available)
- Power Factor (PF) ≥ 0.9
- Total Harmonic Distortion (THD) $\leq 20\%$

LISTING

- UL USA and Canada listed / suitable for damp locations

WARRANTY

- 5 Year Limited Warranty



Los Angeles Lighting Mfg. Co.

Contact Us
T: 626-454-8300 10141 Olney Street
F: 626-454-8399 El Monte, CA 91731
www.lalighting.com Made in the USA



Due to continued product improvements and enhancements, Los Angeles Lighting Manufacturing Company reserves the right to alter specifications, dimensions, data, and/or materials without notice. Please visit our website to view the most current information.

© 2022 LOS ANGELES LIGHTING MANUFACTURING CO. ALL RIGHTS RESERVED.

Revised: 06 08 20H



MADE IN THE USA
BAA Compliant

ORDERING INFORMATION EXAMPLE: GIC110-4-4L-PDA-BPL1.5-DRDM-UNV-2/840

SERIES	LED LUMEN PACKAGE	EFFICACY	NOMINAL LENGTH	OPTICAL	ELECTRICAL	DRIVER	VOLTAGE	# OF LED ROW	CRI / CCT
GIC110			4L	PDA		DRDM	UNV	2	
GIC110 Indirect / Direct Illuminated Center Basket Grid LED Luminaire	2 Nom. 2000 Lumens 4 Nom. 4000 Lumens 6 Nom. 6000 Lumens 8 Nom. 8000 Lumens *Additional Lumen Packages Available	(Blank) Standard HE High Efficacy	4L 1X4	PDA Perforated Steel / White Acrylic Overlay with Polyethylene Protective Trim	BPL1.5 1500lm Emergency Battery Pack WLC(XXXXX) Wireless Control *Leave Blank if Not Specified <i>Additional Electrical Options</i>	DRDM 0-10V Dimming Driver	UNV 120V-277V	2 Two LED Rows	830 80+CRI / 3000K Color Temp. 835 80+CRI / 3500K Color Temp. 840 80+CRI / 4000K Color Temp. 850 80+CRI / 5000K Color Temp. *Additional Color Temp. Available
Standard options for GIC110 shown above. For additional options, including lumen packages, controls, lenses, switches, finishes, and more, visit www.lalighting.com/resources or contact customer service.									

SYSTEM DATA

THESE ARE THE MOST POPULAR LUMEN PACKAGES. PLEASE CONSULT FACTORY FOR ADDITIONAL SYSTEM DATA.

LED LUMEN PACKAGE	NORMAL AMBIENT TEMPERATURE PRODUCT CODE	DELIVERED LUMENS	SYSTEM WATTS	LUMINAIRE EFFICACY	AMBIENT TEMP.	FLUORESCENT EQUIVALENT	IES FILES
2000 Lumens (Nominal)	GIC110-2-4L-PDA-DRDM-UNV-2/840	1587 lm	15.2 W	104.5 lm/W	-20°C / 35°C	1-F32T8	LA-T3096
4000 Lumens (Nominal)	GIC110-4-4L-PDA-DRDM-UNV-2/840	3105 lm	31.4 W	98.7 lm/W	-20°C / 35°C	2-F32T8, 1-F54T5HO	LA-T3097
6000 Lumens (Nominal)	GIC110-6-4L-PDA-DRDM-UNV-2/840	4554 lm	48.6 W	93.6 lm/W	-20°C / 35°C	3-F32T8	LA-T3098
8000 Lumens (Nominal)	GIC110-8-4L-PDA-DRDM-UNV-2/840	5932 lm	66.7 W	89.0 lm/W	-20°C / 35°C	4-F32T8, 2-F54T5HO	LA-T3107

LED LUMEN PACKAGE	NORMAL AMBIENT TEMPERATURE (HIGH EFFICACY) PRODUCT CODE	DELIVERED LUMENS	SYSTEM WATTS	LUMINAIRE EFFICACY	AMBIENT TEMP.	FLUORESCENT EQUIVALENT	IES FILES
2000 Lumens (Nominal)	GIC110-2HE-4L-PDA-DRDM-UNV-2/840	1469 lm	12.6 W	116.3 lm/W	-20°C / 35°C	1-F32T8	*
4000 Lumens (Nominal)	GIC110-4HE-4L-PDA-DRDM-UNV-2/840	2951 lm	25.7 W	114.8 lm/W	-20°C / 35°C	2-F32T8, 1-F54T5HO	*
6000 Lumens (Nominal)	GIC110-6HE-4L-PDA-DRDM-UNV-2/840	4401 lm	39.2 W	112.3 lm/W	-20°C / 35°C	3-F32T8	*
8000 Lumens (Nominal)	GIC110-8HE-4L-PDA-DRDM-UNV-2/840	5819 lm	53.1 W	109.6 lm/W	-20°C / 35°C	4-F32T8, 2-F54T5HO	*

NOTE:
System data is based on 120V input voltage. Actual performance may differ as a result of end-user environment and application.

This fixture has been tested and listed in accordance with UL Standards. L.A. Lighting certifies that it will operate safely when installed properly, and within an ambient temperature range noted in the system data table.

Additional lumen packages and color temperatures available.



Los Angeles Lighting Mfg. Co.
Contact Us
T: 626-454-8300 10141 Olney Street
F: 626-454-8399 El Monte, CA 91731
www.lalighting.com Made in the USA



Due to continued product improvements and enhancements, Los Angeles Lighting Manufacturing Company reserves the right to alter specifications, dimensions, data, and/or materials without notice. Please visit our website to view the most current information.

© 2022 LOS ANGELES LIGHTING MANUFACTURING CO. ALL RIGHTS RESERVED.

Revised: 07/05/23

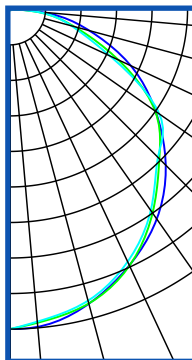
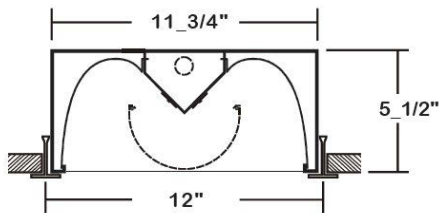


MADE IN THE USA
BAA Compliant

PHOTOMETRIC DATA - GIC110 SERIES

GIC110-4-4L-PDA-DRDM-UNV-2/840

TEST NO.=LA-T3097
 LED TYPE= 48 LED MODULE
 NO. OF MODULE=4
 SYSTEM WATT (W)=31.4
 CRI ≥ 80
 L70(Hrs.) ≥ 50,000
 PHOTOMETRY TYPE=C



CANDLEPOWER

ANGLE	END	45	CROSS
0	1049	1049	1049
5	1046	1032	1029
15	1000	999	990
25	927	928	914
35	840	816	806
45	723	693	687
55	583	582	599
65	438	393	363
75	270	218	209
85	108	86	87
90	7	5	6
95	0	0	0
105	0	0	0
115	0	0	0
125	0	0	0
135	0	0	0
145	0	0	0
155	0	0	0
165	0	0	0
175	0	0	0
180	0	0	0

ZONAL LUMEN SUMMARY

DEGREES	LUMENS	% LAMP	% FIXTURE
0-30	809	18	26
0-40	1324	30	43
0-60	2391	53	77
0-90	3103	69	100
90-120	0.0	0.0	0.0
90-150	0.0	0.0	0.0
90-180	0.0	0.0	0.0
0-180	3104	69	100

Luminaire Output= 3104.5 lumens
 Luminaire Efficacy = 98.9 lm/W

SPACING CRITERION

ALONG	ACROSS
1.25	1.31

