



RECESSED GHL320



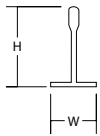
2' WIDE HINGE AND LATCH RECESSED TROFFER

| | |
|------|--|
| JOB | |
| TYPE | |
| DATE | |

Grid-Mounted



2' x 2'

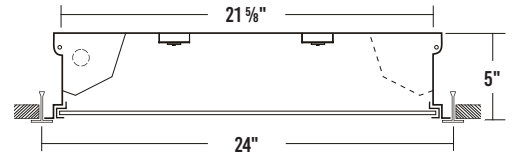


| COMPATIBLE T-BAR GRIDS | |
|------------------------|--------|
| WIDTH | HEIGHT |
| 15/16" | 1 1/2" |

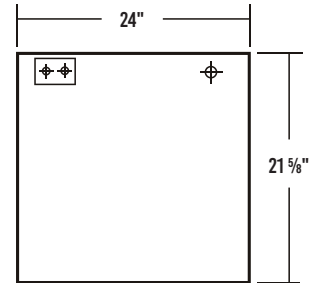


2' x 4'

CROSS SECTION



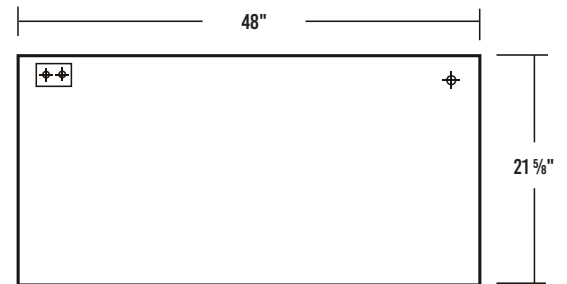
2' BACKPLATE



☒ Access Plate

⌀ 7/8" KO

4' BACKPLATE



SPECIFICATIONS

Construction

- 22 gauge cold-rolled steel housing
- 20 gauge cold rolled steel door frame secured by T-hinges and positive spring loaded latches
- One way polyurethane gasket

Finish

- Baked white polyester finish
- Minimum reflectance 86%
- Door frame painted after fabrication

Optical

- Clear prismatic acrylic lens

Electrical

- High-efficiency drivers coupled with long-life LEDs
- Service life tested at 148,000 hours (L70)
- Universal voltage 120V through 277V (347V / 480V available)
- Power Factor (PF) ≥ 0.9
- Total Harmonic Distortion (THD) ≤ 20%

Listing

- UL USA and Canada listed / suitable for damp locations

Warranty

- 5-Year limited warranty standard. 10-Year limited warranty also available

APPLICATIONS

- Offices, Schools, Commercial

FEATURES

- 0-10V dimming driver standard
- Supports California Title 24 compliance

OPTIONS

- Range of lumen packages and color temperatures
- Sensors and controls
- Lens options
- Painted after fabrication
- Tunable white (2700K – 6500K)
- Emergency battery pack
- 20 gauge housing
- Extruded aluminum door frame
- Neoprene gasket
- Customization available upon request



Los Angeles Lighting Mfg. Co.
 Contact Us
 T: 626-454-8300 10141 Olney Street
 F: 626-454-8399 El Monte, CA 91731
 www.lalighting.com Made in the USA



Due to continued product improvements and enhancements, Los Angeles Lighting Manufacturing Company reserves the right to alter specifications, dimensions, data, and/or materials without notice. Please visit our website to view the most current information.

© 2024 LOS ANGELES LIGHTING MANUFACTURING CO. ALL RIGHTS RESERVED

Revised: 10/30/24

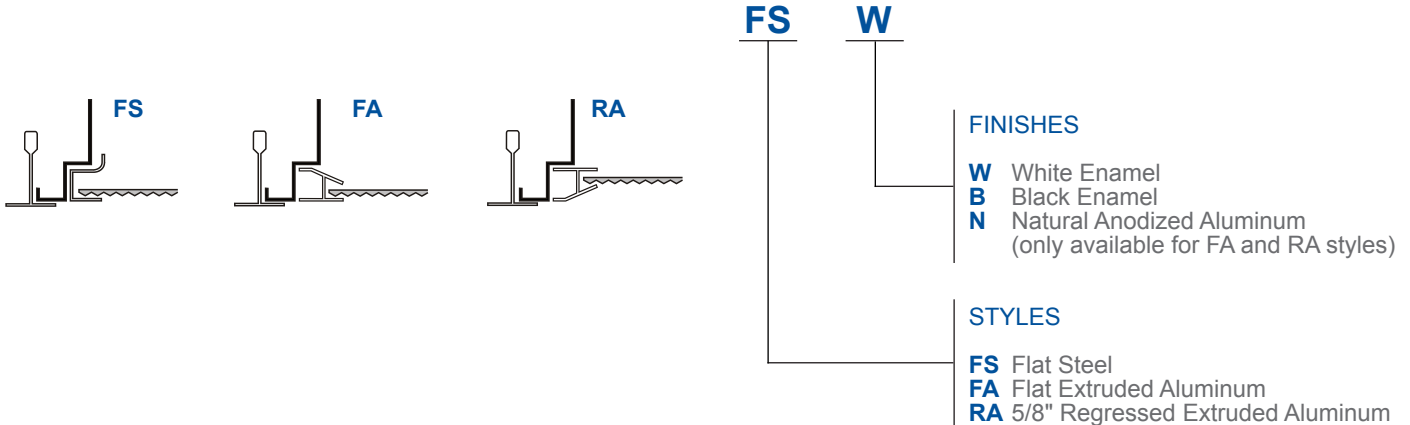


GHL320 LED 2' Wide Hinge and Latch Recessed Troffer

ORDERING INFORMATION: Additional Options Available. Visit www.lalighting.com/resources for more information

| EXAMPLE: GHL320-4-4L-FSW-PA-BPL1.5-DRDM-UNV-2/840 | | | | | | | | | | |
|---|--|------------------------|---|---|--|--|---------------------------------------|---------------------------|----------------------------|---|
| SERIES | NOMINAL LED LUMENS | NOMINAL LENGTH | DOOR FRAME | OPTICAL | MECHANICAL | ELECTRICAL | DRIVER | VOLTAGE | # OF LED ROWS | CRI / CCT |
| GHL320 | | | | | | | DRDM | UNV | 2 | |
| GHL320 • 2' Wide Hinge and Latch Recessed Troffer | 2 - 2000 lm 3 - 3000 lm 4 - 4000 lm 6 - 6000 lm 8 - 8000 lm 12 - 12000 lm High Efficacy 2HE - 2000 lm 3HE - 3000 lm 4HE - 4000 lm 6HE - 6000 lm 8HE - 8000 lm | 2L • 2' x 2' | FSW • Flat Steel White Enamel | PA • Clear Prismatic Acrylic PA2 • Clear Prismatic Acrylic 0.125" FPA2 • Frosted Prismatic Acrylic 0.125" FFWA • Flat Frosted White Acrylic | GSKNx • Neoprene Gasket *Leave blank for standard 1-way polyurethane gasket | BPL1.5 • 1500 lm emergency battery pack WLC(xx) • Wireless Control *Leave blank if not specified | DRDM • 0-10V Dimming Driver | UNV • 120V-277V | 2 • Two LED Rows | 827 • 80+CRI / 2700K 830 • 80+CRI / 3000K 835 • 80+CRI / 3500K 840 • 80+CRI / 4000K 850 • 80+CRI / 5000K 865 • 80+CRI / 6500K 8TW • 80+CRI Tunable White 2700K-6500K 90CRI Also available <i>Contact customer service for additional CRI/CCT packages.</i> |
| | 2 - 2000 lm 4 - 4000 lm 6 - 6000 lm 8 - 8000 lm 12 - 12000 lm 16 - 16000 lm 24 - 24000 lm High Efficacy 2HE - 2000 lm 4HE - 4000 lm 6HE - 6000 lm 8HE - 8000 lm 12HE - 12000 lm | 4L • 2' x 4' | | <i>Standard options for GHL320 shown above. For additional options, including lumen packages, controls, lenses, switches, finishes, and more, visit www.lalighting.com/resources or contact customer service.</i> | | | | | | |

DOOR FRAME CROSS SECTION



OPTICAL OPTIONS

STANDARD LENSES FOR GHL310

- PA** Clear Prismatic Acrylic, No Thickness Specified, Female Prisms 3/16 Square Base
- PA2** Clear Prismatic Acrylic, Nom. 0.125" OA Thickness, Female Prisms 3/16 Square Base
- FFWA** Flat Frosted White Acrylic
- FPA2** Frosted Prismatic Acrylic, Nom. 0.125" OA Thickness, Female Prisms 3/16 Square Base



Los Angeles Lighting Mfg. Co.
 Contact Us
 T: 626-454-8300 10141 Olney Street
 F: 626-454-8399 El Monte, CA 91731
www.lalighting.com Made in the USA



Due to continued product improvements and enhancements, Los Angeles Lighting Manufacturing Company reserves the right to alter specifications, dimensions, data, and/or materials without notice. Please visit our website to view the most current information.

© 2024 LOS ANGELES LIGHTING MANUFACTURING CO. ALL RIGHTS RESERVED

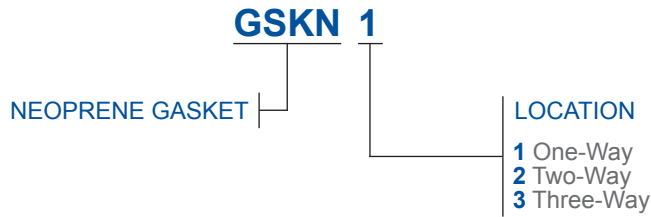
Revised: 10/30/24



GHL320 LED 2' Wide Hinge and Latch Recessed Troffer

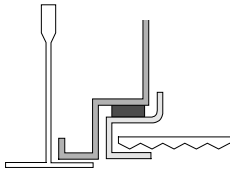
NEOPRENE GASKET

If Neoprene gasketing is not specified, standard 1-way polyurethane gasket will be used.



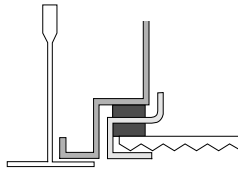
1-WAY

Gasket between housing and door frame. Only for FS and FA style door frames.



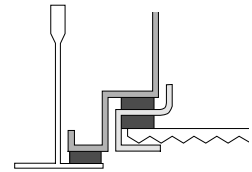
2-WAY

Additional gasket between door frame and lens. Only for FS style door frames.



3-WAY

Additional gasket between housing and grid. Only for FS style door frames.



SYSTEM DATA: Additional Lumen Packages Available. Contact Customer Service for More Information

| Normal Temp | 2' | LED LUMEN PACKAGE | NORMAL AMBIENT TEMPERATURE PRODUCT CODE | DELIVERED LUMENS | SYSTEM WATTS | LUMINAIRE EFFICACY | AMBIENT TEMP. | FLUORESCENT EQUIVALENT | IES FILES |
|-------------|----|------------------------|---|-----------------------------------|--------------|--------------------|----------------------------|----------------------------|------------------------|
| | | | 2000 Lumens (Nominal) | GHL320-2-2L-FSA-PA-DRDM-UNV-2/840 | 1634 | 12.5 | 131.0 lm/W | -20°C / 35°C (-4°F / 95°F) | 1x F24T5HO 2x F17T8 |
| | | 3000 Lumens (Nominal) | GHL320-3-2L-FSA-PA-DRDM-UNV-2/840 | 2583 | 20.2 | 127.6 lm/W | -20°C / 35°C (-4°F / 95°F) | 3x F17T8 | * |
| | | 4000 Lumens (Nominal) | GHL320-4-2L-FSA-PA-DRDM-UNV-2/840 | 3207 | 25.5 | 125.6 lm/W | -20°C / 35°C (-4°F / 95°F) | 2x F24T5HO 4x F17T8 | * |
| | | 6000 Lumens (Nominal) | GHL320-6-2LFSA-PA-DRDM-UNV-2/840 | 4676 | 39.1 | 119.7 lm/W | -20°C / 35°C (-4°F / 95°F) | 3x F24T5HO 6x F17T8 | * |
| | | 8000 Lumens (Nominal) | GHL320-8-2L-FSA-PA-DRDM-UNV-2/840 | 6215 | 53.1 | 117.1 lm/W | -20°C / 35°C (-4°F / 95°F) | 2x F54T5HO 4x F24T5HO | * |
| | | 12000 Lumens (Nominal) | GHL320-12-2L-FSA-PA-DRDM-UNV-2/840 | 9361 | 78.0 | 120.0 lm/W | -20°C / 35°C (-4°F / 95°F) | 3x F54T5HO 6x F24T5HO | * |

| Normal Temp High Efficacy | 2' | LED LUMEN PACKAGE | NORMAL AMBIENT TEMPERATURE (HIGH EFFICACY) PRODUCT CODE | DELIVERED LUMENS | SYSTEM WATTS | LUMINAIRE EFFICACY | AMBIENT TEMP. | FLUORESCENT EQUIVALENT | IES FILES |
|---------------------------|----|-----------------------|---|-------------------------------------|--------------|--------------------|----------------------------|----------------------------|------------------------|
| | | | 2000 Lumens (Nominal) | GHL320-2HE-2L-FSA-PA-DRDM-UNV-2/840 | 1660 | 12.4 | 134.4 lm/W | -20°C / 35°C (-4°F / 95°F) | 1x F24T5HO 2x F17T8 |
| | | 3000 Lumens (Nominal) | GHL320-3HE-2L-FSA-PA-DRDM-UNV-2/840 | 2306 | 17.3 | 133.3 lm/W | -20°C / 35°C (-4°F / 95°F) | 3x F17T8 | * |
| | | 4000 Lumens (Nominal) | GHL320-4HE-2L-FSA-PA-DRDM-UNV-2/840 | 3267 | 24.9 | 131.0 lm/W | -20°C / 35°C (-4°F / 95°F) | 2x F24T5HO 4x F17T8 | * |
| | | 6000 Lumens (Nominal) | GHL320-6HE-2L-FSA-PA-DRDM-UNV-2/840 | 4851 | 37.8 | 128.5 lm/W | -20°C / 35°C (-4°F / 95°F) | 3x F24T5HO 6x F17T8 | * |
| | | 8000 Lumens (Nominal) | GHL320-8HE-2L-FSA-PA-DRDM-UNV-2/840 | 6412 | 50.9 | 125.9 lm/W | -20°C / 35°C (-4°F / 95°F) | 2x F54T5HO 4x F24T5HO | * |

NOTE:
System data as of 9/19/24 (K-Boards).
Subject to change without notice.

System data is based on 120V input voltage. Actual performance may differ as a result of end-user environment and application. This fixture has been tested and listed in accordance with UL Standards. L.A. Lighting certifies that it will operate safely when installed properly, and within an ambient temperature range noted in the system data table. Additional lumen packages and color temperatures available.



Los Angeles Lighting Mfg. Co.
Contact Us
T: 626-454-8300 10141 Olney Street
F: 626-454-8399 El Monte, CA 91731
www.lalighting.com Made in the USA



Due to continued product improvements and enhancements, Los Angeles Lighting Manufacturing Company reserves the right to alter specifications, dimensions, data, and/or materials without notice. Please visit our website to view the most current information.

© 2024 LOS ANGELES LIGHTING MANUFACTURING CO. ALL RIGHTS RESERVED

Revised: 10/30/24



GHL320 LED 2' Wide Hinge and Latch Recessed Troffer

SYSTEM DATA: Additional Lumen Packages Available. Contact Customer Service for More Information

| Normal Temp | 4' | LED LUMEN PACKAGE | NORMAL AMBIENT TEMPERATURE PRODUCT CODE | DELIVERED LUMENS | SYSTEM WATTS | LUMINAIRE EFFICACY | AMBIENT TEMP. | FLUORESCENT EQUIVALENT | IES FILES |
|-------------|----|------------------------|---|------------------|--------------|--------------------|----------------------------|------------------------|---------------------------|
| | | 2000 Lumens (Nominal) | GHL320-2-4L-FSA-PA-DRDM-UNV-2/840 | 1743 | 12.4 | 141.1 lm/W | -20°C / 35°C (-4°F / 95°F) | 1x F32T8 | * |
| | | 4000 Lumens (Nominal) | GHL320-4-4L-FSA-PA-DRDM-UNV-2/840 | 3429 | 24.9 | 137.5 lm/W | -20°C / 35°C (-4°F / 95°F) | 1x F54T5HO 2x F32T8 | LA-T3960b |
| | | 6000 Lumens (Nominal) | GHL320-6-4L-FSA-PA-DRDM-UNV-2/840 | 5072 | 37.8 | 134.3 lm/W | -20°C / 35°C (-4°F / 95°F) | 3x F32T8 | * |
| | | 8000 Lumens (Nominal) | GHL320-8-4L-FSA-PA-DRDM-UNV-2/840 | 6730 | 50.9 | 132.1 lm/W | -20°C / 35°C (-4°F / 95°F) | 2x F54T5HO 4x F32T8 | LA-T3961b |
| | | 12000 Lumens (Nominal) | GHL320-12-4L-FSA-PA-DRDM-UNV-2/840 | 9822 | 78.0 | 125.9 lm/W | -20°C / 35°C (-4°F / 95°F) | 3x F54T5HO 6x F32T8 | * |
| | | 16000 Lumens (Nominal) | GHL320-16-4L-FSA-PA-DRDM-UNV-2/840 | 13046 | 106.1 | 122.9 lm/W | -20°C / 35°C (-4°F / 95°F) | 4x F54T5HO | * |
| | | 24000 Lumens (Nominal) | GHL320-24-4L-FSA-PA-DRDM-UNV-2/840 | 19553 | 153.4 | 127.5 lm/W | -20°C / 35°C (-4°F / 95°F) | 6x F54T5HO | * |

| Normal Temp High Efficacy | 4' | LED LUMEN PACKAGE | NORMAL AMBIENT TEMPERATURE (HIGH EFFICACY) PRODUCT CODE | DELIVERED LUMENS | SYSTEM WATTS | LUMINAIRE EFFICACY | AMBIENT TEMP. | FLUORESCENT EQUIVALENT | IES FILES |
|---------------------------|----|------------------------|---|------------------|--------------|--------------------|----------------------------|------------------------|-----------|
| | | 2000 Lumens (Nominal) | GHL320-2HE-4L-FSA-PA-DRDM-UNV-2/840 | 1780 | 12.2 | 145.5 lm/W | -20°C / 35°C (-4°F / 95°F) | 1x F32T8 | * |
| | | 4000 Lumens (Nominal) | GHL320-4HE-4L-FSA-PA-DRDM-UNV-2/840 | 3484 | 24.6 | 141.7 lm/W | -20°C / 35°C (-4°F / 95°F) | 1x F54T5HO 2x F32T8 | * |
| | | 6000 Lumens (Nominal) | GHL320-6HE-4L-FSA-PA-DRDM-UNV-2/840 | 4839 | 34.6 | 139.9 lm/W | -20°C / 35°C (-4°F / 95°F) | 3x F32T8 | * |
| | | 8000 Lumens (Nominal) | GHL320-8HE-4L-FSA-PA-DRDM-UNV-2/840 | 6521 | 47.2 | 138.2 lm/W | -20°C / 35°C (-4°F / 95°F) | 2x F54T5HO 4x F32T8 | * |
| | | 12000 Lumens (Nominal) | GHL320-12HE-4L-FSA-PA-DRDM-UNV-2/840 | 9851 | 72.8 | 135.3 lm/W | -20°C / 35°C (-4°F / 95°F) | 3x F54T5HO 6x F32T8 | * |

NOTE:

System data as of 9/19/24 (K-Boards).
Subject to change without notice.

System data is based on 120V input voltage. Actual performance may differ as a result of end-user environment and application. This fixture has been tested and listed in accordance with UL Standards. L.A. Lighting certifies that it will operate safely when installed properly, and within an ambient temperature range noted in the system data table. Additional lumen packages and color temperatures available.



Los Angeles Lighting Mfg. Co.
 Contact Us
 T: 626-454-8300 10141 Olney Street
 F: 626-454-8399 El Monte, CA 91731
 www.lalighting.com Made in the USA



Due to continued product improvements and enhancements, Los Angeles Lighting Manufacturing Company reserves the right to alter specifications, dimensions, data, and/or materials without notice. Please visit our website to view the most current information.

© 2024 LOS ANGELES LIGHTING MANUFACTURING CO. ALL RIGHTS RESERVED

Revised: 10/30/24

