



INDUSTRIAL LED

INW200 (8FT) SERIES (4' AVAILABLE)

INDUSTRIAL 11" WIDE LUMINAIRE

DATE	
JOB	

WWW.LALIGHTING.COM
626-454-8300

APPLICATIONS

COMMERCIAL, ASSEMBLY LINE



SPECIFICATIONS

FEATURES

- Suspension mounted LED luminaire
- 0-10V dimming driver standard (other dimming types available)
- Controls and sensors available
- Wireless control options (Lutron, EnOcean, ZigBee, etc.)
- Supports California Title 24 compliance
- Suitable for damp locations
- Additional lumen packages and color temperatures available
- Full customization available upon request

CONSTRUCTION

- 22 ga. cold rolled steel housing
- End plates fastened to housing by screws to assure rigidity
- 14 ga. wire guard available
- Slotted reflector available
- Uplight available
- Chain mount coupling available
- 45-degree mounting bracket available

OPTICAL

- Frosted smooth acrylic snap-in lens

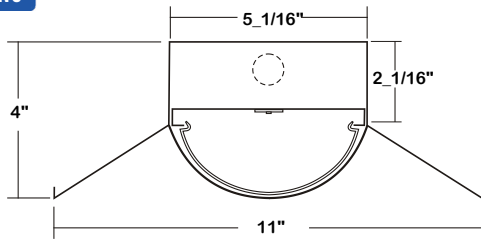
ELECTRICAL

- High efficiency drivers coupled with long-life LEDs
- Service life greater than 50,000 hours (L70)
- Universal voltage 120V through 277V (347V / 480V available)
- Step dimming control available
- Emergency battery pack available

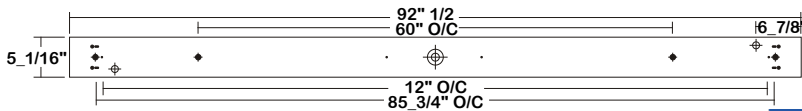
FINISH

- Baked white polyester finish
- Minimum reflectance 86%
- End plates - baked white powder coated finish / painted after fabrication

DIMENSIONS



- 3/16" MTG. HOLE
- ◆ 11/16" STEM MTG. K.O.
- ⊕ 7/8" K.O.
- ⊕ 2" K.O.
- V-HOOK



CERTIFICATIONS



ORDERING INFORMATION

EXAMPLE: INW200-12-8L-S-BPL-1DRDM-UNV-1/850

SERIES	LED LUMEN PACKAGE	NOMINAL LENGTH	MECHANICAL	ELECTRICAL	DRIVER	VOLTAGE	# OF LED ROW	CRI / CCT
INW200		8L				UNV	1	
INW200 Industrial 11" Wide LED Luminaire	4 Nom. 4000 Lumens 8 Nom. 8000 Lumens 12 Nom. 12000 Lumens 16 Nom. 16000 Lumens <i>*Additional Lumen Packages Available</i>	8L 8'	S Slotted Reflector <i>*Leave Blank if Not Specified</i>	BPL Emergency Battery Pack MS Motion Sensor SDxx Step Dimming Control <i>*Leave Blank if Not Specified</i> <i>Additional Motion Sensor Options</i> <i>Additional Electrical Options</i>	1DRDM 0-10V One Dimming Driver (Only 4K / 8K / 12K Systems) 2DRDM 0-10V Two Dimming Drivers (Only 16K System) <i>Additional Driver Options</i>	UNV 120V-277V <i>*Additional Voltages Available</i>	1 One LED Row	835 80+CRI / 3500K Color Temp. 840 80+CRI / 4000K Color Temp. 850 80+CRI / 5000K Color Temp. <i>*Additional Color Temp. Available</i>



Los Angeles Lighting Mfg. Co.
Headquarters
10141 Olney Street
El Monte, CA 91731
Made in the USA

Contact Us
T: 626-454-8300
F: 626-454-8399
www.lalighting.com

Due to continued product improvements and enhancements, Los Angeles Lighting Manufacturing Company reserves the right to alter specifications, dimensions, data, and/or materials without notice. Please visit our website to view the most current information.

SYSTEM DATA

NOMINAL SIZE	LED LUMEN PACKAGE	CRI / CCT	DELIVERED LUMENS	SYSTEM WATTS	LUMINAIRE EFFICACY	FLUORESCENT EQUIVALENT	IES FILES
8'	4000 lm	840	4013 lm	32.9 W	122.0 lm/W	2-F32T8	LA-T2861
	8000 lm		7545 lm	67.0 W	112.6 lm/W	4-F32T8, 2-F54T5HO	LA-T2862
	12000 lm		11108 lm	89.0 W	124.8 lm/W	6-F32T8	LA-T2863
	16000 lm		15078 lm	132.8 W	113.5 lm/W	8-F32T8, 4-F54T5HO	LA-T2864

NOTE:
 System data above is based on 120V input voltage.
 Actual performance may differ as a result of end-user environment and application.
 This fixture has been tested and listed in accordance with UL Standards. L.A. Lighting certifies that it will operate safely when installed properly, and within an ambient temperature range from -20°C to 40°C.

Additional lumen packages and color temperatures available.

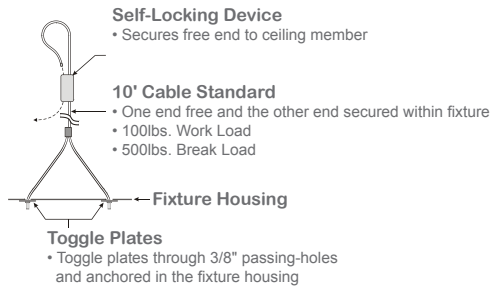
PERFORMANCE DATA

VIEW PHOTOMETRICS

ACCESSORIES

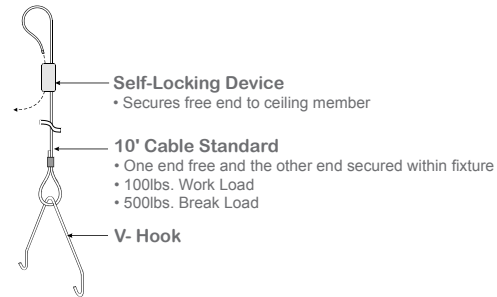
YTCS10

- Y-Toggle-End / Cable Suspension System



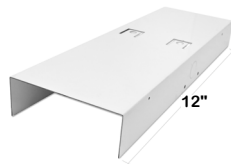
V4CS10

- V-Hook / Cable Suspension System
- Cable set with V4 hooks



CMC-XXW200

- Chain mount coupling with lift-up tabs for installation of V-Hooks when chain mounted
- Baked white enamel finish



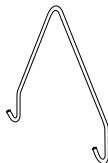
45MB

- 45-Degree Mounting Bracket
- Designed for mounting lighting fixtures at 45° angle
- Ideal for wall or ceiling mount applications
- 18 ga. electro galvanized steel
- Baked white powder coated finish

Note: Must drill own holes for 45-Degree Mounting Bracket.

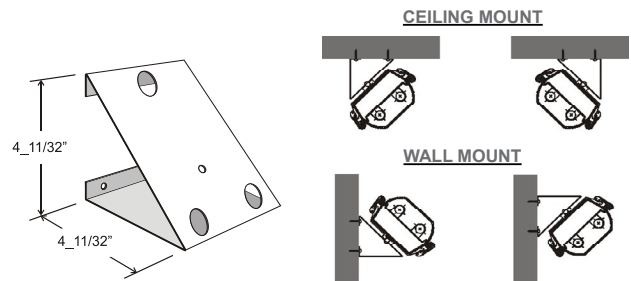
V4

- 4" Leg Height V-Hook
- Two (2) per fixture



WG14-INW200

- 14 ga. Wire Guard
- Chrome epoxy powder coated finish



Los Angeles Lighting Mfg. Co.

Headquarters
 10141 Olney Street
 El Monte, CA 91731
 Made in the USA

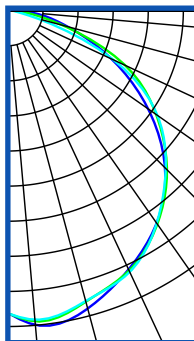
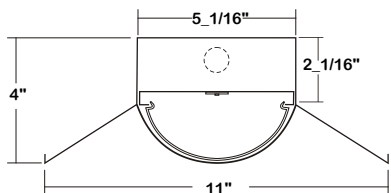
Contact Us
 T: 626-454-8300
 F: 626-454-8399
 www.lalighting.com

Due to continued product improvements and enhancements, Los Angeles Lighting Manufacturing Company reserves the right to alter specifications, dimensions, data, and/or materials without notice. Please visit our website to view the most current information.

PHOTOMETRIC DATA - INW200 SERIES

INW200-2-4L-1DRDM(ULT)-UNV-1S/840

TEST NO.=LA-T2866
 LED TYPE= 24 LED MODULE
 NO. OF MODULE=2
 SYSTEM WATT (W)=17.8
 CRI ≥ 80
 L70(Hrs.) ≥ 100,000
 PHOTOMETRY TYPE=C



CANDLEPOWER			
ANGLE	END	45	CROSS
0	667	667	667
5	695	686	682
15	675	660	659
25	624	627	631
35	565	568	565
45	482	488	485
55	368	391	394
65	242	275	244
75	127	113	50
85	47	23	9
90	8	4	0
95	9	21	0
115	7	1	0
125	4	1	0
135	3	1	0
145	2	0	0
155	1	0	0
165	0	0	0
175	0	0	0
180	0	0	0

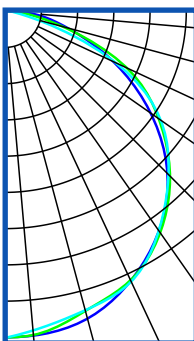
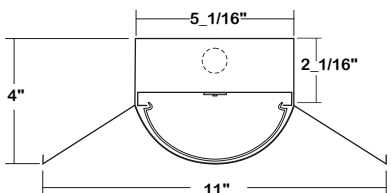
ZONAL LUMEN SUMMARY			
DEGREES	LUMENS	% LAMP	% FIXTURE
0-30	544	25.2	26.9
0-40	900	41.7	44.5
0-60	1622	75.3	80.2
0-90	2008	93.2	99.3
90-120	9	0.4	0.4
90-150	12	0.5	0.6
90-180	13	0.5	0.6
0-180	2021	93.8	100.0

Luminaire Output= 2021 lumens
 Luminaire Efficacy = 113.5 LPW

SPACING CRITERION	
ALONG	ACROSS
1.31	1.31

INW200-4-4L-1DRDM(ULT)-UNV-1S/840

TEST NO.=LA-T2867
 LED TYPE= 32 LED MODULE
 NO. OF MODULE=2
 SYSTEM WATT (W)=34.7
 CRI ≥ 80
 L70(Hrs.) ≥ 100,000
 PHOTOMETRY TYPE=C



CANDLEPOWER			
ANGLE	END	45	CROSS
0	1312	1312	1312
5	1308	1305	1286
15	1275	1243	1241
25	1188	1187	1193
35	1068	1077	1066
45	909	924	916
55	697	739	748
65	461	520	466
75	240	215	98
85	89	44	16
90	15	7	1
95	18	4	0
115	12	3	0
125	8	2	0
135	5	2	0
145	3	1	0
155	2	1	0
165	1	0	0
175	0	0	0
180	0	0	0

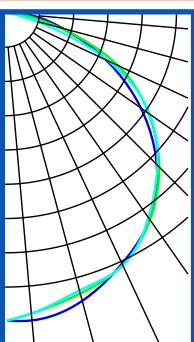
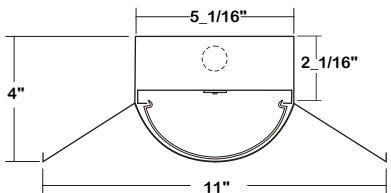
ZONAL LUMEN SUMMARY			
DEGREES	LUMENS	% LAMP	% FIXTURE
0-30	1029	25.2	26.8
0-40	1702	41.7	44.4
0-60	3069	75.2	80.2
0-90	3803	93.2	99.3
90-120	18	0.4	0.4
90-150	24	0.5	0.6
90-180	24	0.6	0.6
0-180	3827	93.8	100.0

Luminaire Output= 3827 lumens
 Luminaire Efficacy = 110.3 LPW

SPACING CRITERION	
ALONG	ACROSS
1.31	1.32

INW200-6-4L-1DRDM(ULT)-UNV-1S/840

TEST NO.=LA-T2868
 LED TYPE= 48 LED MODULE
 NO. OF MODULE=2
 SYSTEM WATT (W)=52.5
 CRI ≥ 80
 L70(Hrs.) ≥ 100,000
 PHOTOMETRY TYPE=C



CANDLEPOWER			
ANGLE	END	45	CROSS
0	1962	1962	1962
5	1967	1920	1920
15	1893	1847	1826
25	1753	1764	1764
35	1593	1594	1594
45	1347	1371	1371
55	1031	1094	1094
65	681	766	766
75	352	321	321
85	132	65	65
90	23	10	10
95	27	6	6
115	21	4	0
125	11	3	0
135	8	3	0
145	5	2	0
155	3	1	0
165	1	0	0
175	0	0	0
180	0	0	0

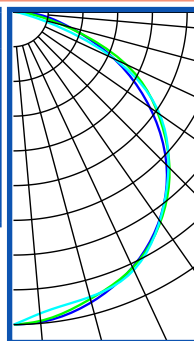
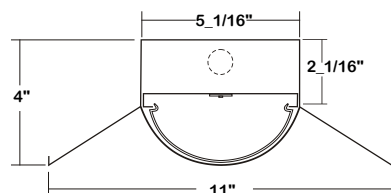
ZONAL LUMEN SUMMARY			
DEGREES	LUMENS	% LAMP	% FIXTURE
0-30	1526	25.2	26.9
0-40	2524	41.7	44.5
0-60	4547	75.2	80.2
0-90	5631	93.1	99.3
90-120	27	0.4	0.4
90-150	35	1.5	0.6
90-180	36	0.6	0.6
0-180	5667	93.7	100.0

Luminaire Output= 5667 lumens
 Luminaire Efficacy = 107.9 LPW

SPACING CRITERION	
ALONG	ACROSS
1.26	1.26

INW200-8-4L-1DRDM(ULT)-UNV-1S/840

TEST NO.=LA-T2869
 LED TYPE= 72 LED MODULE
 NO. OF MODULE=2
 SYSTEM WATT (W)=66.4
 CRI ≥ 80
 L70(Hrs.) ≥ 100,000
 PHOTOMETRY TYPE=C



CANDLEPOWER			
ANGLE	END	45	CROSS
0	2614	2614	2614
5	2602	2592	2530
15	2511	2482	2466
25	2352	2356	2378
35	2122	2138	2128
45	1804	1839	1827
55	1385	1466	1486
65	923	1033	927
75	471	427	190
85	175	89	34
90	32	14	2
95	35	8	1
105	24	5	0
125	16	5	0
135	10	4	0
145	6	3	0
155	4	2	0
165	1	1	0
175	0	0	0
180	0	0	0

ZONAL LUMEN SUMMARY			
DEGREES	LUMENS	% LAMP	% FIXTURE
0-30	2044	25.2	26.8
0-40	3383	41.7	44.4
0-60	6099	75.2	80.2
0-90	7555	93.2	99.3
90-120	36	0.4	0.4
90-150	47	0.5	0.6
90-180	49	0.6	0.6
0-180	7604	93.8	100.0

Luminaire Output= 7604 lumens
 Luminaire Efficacy = 114.5 LPW

SPACING CRITERION	
ALONG	ACROSS
1.27	1.27

