



# SECURITY LED

## WSE400 SERIES

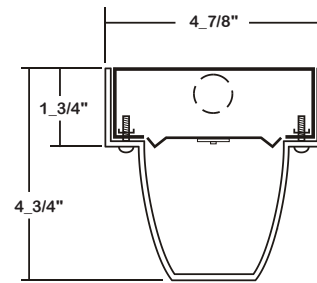
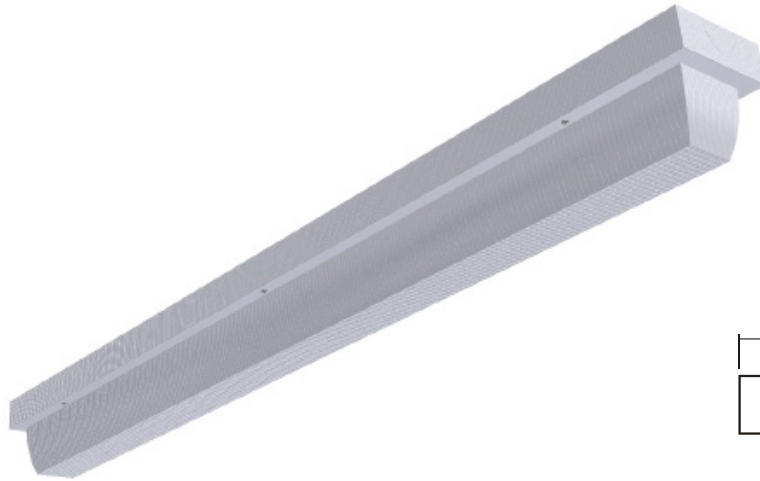
HIGH IMPACT WRAPAROUND SECURITY LUMINAIRE

DATE	
JOB	

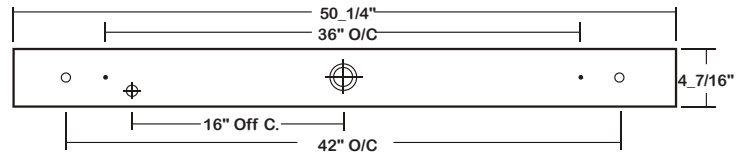
WWW.LALIGHTING.COM  
626-454-8300

### SURFACE / CEILING / WALL MOUNTED SECURITY LED LUMINAIRE

### DIMENSIONS



• 3/8" MTG. K.O.    ○ 11/16" STEM MTG. K.O.    ⊕ 7/8" K.O.    ⊕ 2" K.O.



### APPLICATIONS

- Security, Vandal Resistant Areas, Commercial

### FEATURES

- 0-10V dimming driver standard
- Supports California Title 24 compliance

### OPTIONS

- Full customization available upon request
- Additional lumen packages and color temperatures available
- Wireless control options available
- Emergency battery pack available

### SPECIFICATIONS

#### CONSTRUCTION

- 20 ga. cold rolled steel welded housing
- Spot welded seams and corners
- Lens secured by 6 stainless steel captive tamper resistant screws
- One-way cross-linked polyethylene gasket standard

#### FINISH

- Baked white powder coated finish / welded and painted after fabrication / minimum reflectance 90%

#### OPTICAL

- Clear prismatic polycarbonate lens (nominal 0.187) standard

#### ELECTRICAL

- High efficiency drivers coupled with long-life LEDs
- Service life greater than 50,000 hours (L70)
- Universal voltage 120V through 277V (347V / 480V available)
- Power Factor (PF) ≥ 0.9
- Total Harmonic Distortion (THD) ≤ 20%

#### LISTING

- UL USA and Canada listed / suitable for damp locations

#### WARRANTY

- 5-Year limited warranty standard. 10-Year limited warranty also available



**Los Angeles Lighting Mfg. Co.**

Contact Us  
T: 626-454-8300    10141 Olney Street  
F: 626-454-8399    El Monte, CA 91731  
www.lalighting.com    Made in the USA



Due to continued product improvements and enhancements, Los Angeles Lighting Manufacturing Company reserves the right to alter specifications, dimensions, data, and/or materials without notice. Please visit our website to view the most current information.

© 2022 LOS ANGELES LIGHTING MANUFACTURING CO. ALL RIGHTS RESERVED.

Revised: 07/18/23



MADE IN THE USA  
BAA Compliant

ORDERING INFORMATION

EXAMPLE: WSE400-4-4L-BPL1.5-DRDM-UNV-1/840

SERIES	LED LUMEN PACKAGE	EFFICACY		ELECTRICAL	DRIVER	VOLTAGE	# OF LED ROW	CRI / CCT
<b>WSE400</b>			<b>4L</b>		<b>DRDM</b>	<b>UNV</b>	<b>1</b>	
<b>WSE400</b> High Impact Wraparound Security LED Luminaire	2 Nom. 2000 Lumens 4 Nom. 4000 Lumens 6 Nom. 6000 Lumens 8 Nom. 8000 Lumens  *Additional Lumen Packages Available	(Blank) Standard  <b>HE</b> High Efficacy (Only 2000 / 4000 / 6000 lumens Systems)	<b>4L</b> 4'	<b>BPL1.5</b> 1500lm Emergency Battery Pack  <b>WLC(LED RU)</b> EnOcean Wireless Control  *Leave Blank if Not Specified  <u>Additional Electrical Options</u>	<b>DRDM</b> 0-10V Dimming Driver	<b>UNV</b> 120V-277V	<b>1</b> One LED Row	<b>830</b> 80+CRI / 3000K Color Temp.  <b>835</b> 80+CRI / 3500K Color Temp.  <b>840</b> 80+CRI / 4000K Color Temp.  <b>850</b> 80+CRI / 5000K Color Temp.  *Additional Color Temp. Available
<p>Standard options for WSE400 shown above. For additional options, including lumen packages, controls, lenses, switches, finishes, and more, visit <a href="http://www.lalighting.com/resources">www.lalighting.com/resources</a> or contact customer service.</p>								

SYSTEM DATA

THESE ARE THE MOST POPULAR LUMEN PACKAGES. PLEASE CONSULT FACTORY FOR ADDITIONAL SYSTEM DATA.

LED LUMEN PACKAGE	NORMAL AMBIENT TEMPERATURE PRODUCT CODE	DELIVERED LUMENS	SYSTEM WATTS	LUMINAIRE EFFICACY	AMBIENT TEMP.	FLUORESCENT EQUIVALENT	IES FILES
2000 Lumens (Nominal)	WSE400-2-4L-DRDM-UNV-1/840	2184 lm	15.7 W	138.9 lm/W	-20°C / 35°C	1-F32T8	*
4000 Lumens (Nominal)	WSE400-4-4L-DRDM-UNV-1/840	4172 lm	33.1 W	126.04 lm/W	-20°C / 35°C	2-F32T8, 1-F54T5HO	<a href="#">LA-T3188</a>
6000 Lumens (Nominal)	WSE400-6-4L-DRDM-UNV-1/840	5964 lm	52.3 W	114.0 lm/W	-20°C / 35°C	3-F32T8	*
8000 Lumens (Nominal)	WSE400-8-4L-DRDM-UNV-1/840	8055 lm	53.8 W	149.8 lm/W	-20°C / 35°C	4-F32T8, 2-F54T5HO	*

LED LUMEN PACKAGE	NORMAL AMBIENT TEMPERATURE (HIGH EFFICACY) PRODUCT CODE	DELIVERED LUMENS	SYSTEM WATTS	LUMINAIRE EFFICACY	AMBIENT TEMP.	FLUORESCENT EQUIVALENT	IES FILES
2000 Lumens (Nominal)	WSE400-2HE-4L-DRDM-UNV-1/840	2072 lm	12.7 W	163.2 lm/W	-20°C / 35°C	1-F32T8	*
4000 Lumens (Nominal)	WSE400-4HE-4L-DRDM-UNV-1/840	4125 lm	25.9 W	159.1 lm/W	-20°C / 35°C	2-F32T8, 1-F54T5HO	*
6000 Lumens (Nominal)	WSE400-6HE-4L-DRDM-UNV-1/840	6119 lm	39.6 W	154.4 lm/W	-20°C / 35°C	3-F32T8	*

NOTE:

System data is based on 120V input voltage. Actual performance may differ as a result of end-user environment and application.

This fixture has been tested and listed in accordance with UL Standards. L.A. Lighting certifies that it will operate safely when installed properly, and within an ambient temperature range noted in the system data table.

Additional lumen packages and color temperatures available.



**Los Angeles Lighting Mfg. Co.**  
 Contact Us  
 T: 626-454-8300  
 F: 626-454-8399  
[www.lalighting.com](http://www.lalighting.com)  
 10141 Olney Street  
 El Monte, CA 91731  
 Made in the USA



Due to continued product improvements and enhancements, Los Angeles Lighting Manufacturing Company reserves the right to alter specifications, dimensions, data, and/or materials without notice. Please visit our website to view the most current information.

© 2022 LOS ANGELES LIGHTING MANUFACTURING CO. ALL RIGHTS RESERVED.

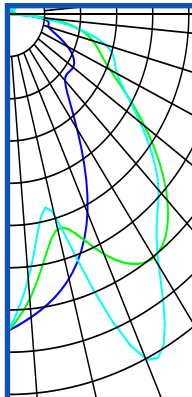
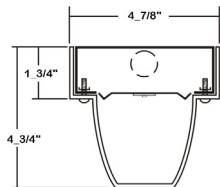
Revised: 07/18/23



**PHOTOMETRIC DATA - WSE400 SERIES**

**WSE400-4-4L-DRDM-UNV-1/840**

TEST NO.=LA-T3188  
 LED TYPE=48 LED MODULE  
 NO. OF MODULE=2  
 SYSTEM WATT (W)=33.1  
 CRI ≥ 80  
 L70(Hrs.) ≥ 50,000  
 PHOTOMETRY TYPE=C



**CANDLEPOWER**

ANGLE	END	45	CROSS
0	1340	1340	1340
5	1288	1211	1126
15	1160	941	880
25	927	1121	1611
35	592	1258	1300
45	396	1115	1053
55	391	825	797
65	324	556	594
75	206	434	499
85	153	202	161
90	25	13	11
95	21	15	8
115	10	23	30
125	7	24	38
135	3	21	44
145	1	8	25
155	0	1	4
165	0	0	0
175	0	0	0
180	0	0	0

**ZONAL LUMEN SUMMARY**

DEGREES	LUMENS	% LAMP	% FIXTURE
0-30	947	22.1	22.7
0-40	1640	38.2	39.3
0-60	2990	69.8	71.6
0-90	4062	94.8	97.3
90-120	63.8	1.4	1.5
90-150	109.2	2.5	2.6
90-180	109.9	2.5	2.6
0-180	4172	97.3	100.00

Luminaire Output= 4172 lumens  
 Luminaire Efficacy = 126.04 lm/W

**SPACING CRITERION**

ALONG	ACROSS
0.94	1.45

