



# SECURITY LED

## BCL 100 (1X1) SERIES

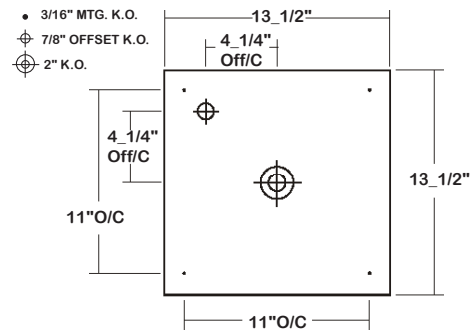
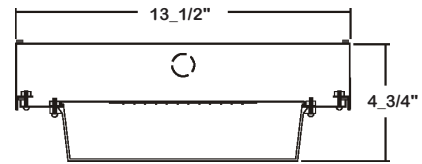
CANOPY SECURITY WET LOCATION WITH POLYCARBONATE LENS LUMINAIRE

|      |  |
|------|--|
| DATE |  |
| JOB  |  |

WWW.LALIGHTING.COM  
626-454-8300

### SURFACE MOUNTED SECURITY WET LOCATION LED LUMINAIRE

### DIMENSIONS



### APPLICATIONS

- Canopy, Educational Facilities, Corridor, Stairwell, Pedestrian Tunnel, Passageway, Vandal Resistant Areas, Wet Location, Commercial

### FEATURES

- Wet location (UL listed with sprinkler test)
- 0-10V dimming driver standard
- Supports California Title 24 compliance
- Safety cables attached to cover

### OPTIONS

- Full customization available upon request
- Additional lumen packages and color temperatures available
- Controls and photocell / occupancy sensors available (See *SENSOR OPTIONS* for controls and sensors)
- Wireless control options available (See *SENSOR OPTIONS* for wireless controls)
- Custom colors available (See *CUSTOM COLORS* for standard and custom options)
- Emergency battery pack available (See *BATTERY PACK OPTIONS* for battery pack options)
- Tamper proof screws available
- Pendant mounting adapter available (See *ACCESSORIES* for details)

### SPECIFICATIONS

#### CONSTRUCTION

- 20 ga. electro-galvanized steel construction
- Neoprene gasket back housing
- Aluminum heat sink cover
- Stainless steel fasteners
- Two side knockouts for 1/2" conduit (knockouts on opposite sides of fixture)

#### FINISH

- Baked white powder coated finish / painted after fabrication / minimum reflectance 90%

#### OPTICAL

- Polycarbonate injection molded lens standard

#### ELECTRICAL

- High efficiency drivers coupled with long-life LEDs
- Service life tested at 50,000-168,000 hours (L70)
- Universal voltage 120V through 277V (347V / 480V available)
- Power Factor (PF)  $\geq 0.9$
- Total Harmonic Distortion (THD)  $\leq 20\%$

#### LISTING

- UL USA and Canada listed / suitable for wet locations

#### WARRANTY

- 5-year limited warranty



**Los Angeles Lighting Mfg. Co.**  
Headquarters  
10141 Olney Street  
El Monte, CA 91731  
Made in the USA

Contact Us  
T: 626-454-8300  
F: 626-454-8399  
www.lalighting.com



Due to continued product improvements and enhancements, Los Angeles Lighting Manufacturing Company reserves the right to alter specifications, dimensions, data, and/or materials without notice. Please visit our website to view the most current information.

**MADE IN THE U.S.A.**

Revised 06-06-19

**WARNING**

**ORDERING INFORMATION** EXAMPLE: BCL100-1-1L-DRDM740-UNV-840

| SERIES                                                                              | # OF LED ROW            | NOMINAL LENGTH       | COLOR                                                                                                                                                                                                                                         | MECHANICAL                                                                                                                                                                                           | ELECTRICAL                                                                                                                                                                                                                                                                                                                            | DRIVER                                                                                                                                                           | VOLTAGE                 | CRI/CCT                                                                                                                           |
|-------------------------------------------------------------------------------------|-------------------------|----------------------|-----------------------------------------------------------------------------------------------------------------------------------------------------------------------------------------------------------------------------------------------|------------------------------------------------------------------------------------------------------------------------------------------------------------------------------------------------------|---------------------------------------------------------------------------------------------------------------------------------------------------------------------------------------------------------------------------------------------------------------------------------------------------------------------------------------|------------------------------------------------------------------------------------------------------------------------------------------------------------------|-------------------------|-----------------------------------------------------------------------------------------------------------------------------------|
| <b>BCL100</b>                                                                       | <b>1</b>                | <b>1L</b>            |                                                                                                                                                                                                                                               |                                                                                                                                                                                                      |                                                                                                                                                                                                                                                                                                                                       |                                                                                                                                                                  | <b>UNV</b>              |                                                                                                                                   |
| <b>BCL100</b><br>Canopy Security Wet Location with Polycarbonate Lens LED Luminaire | <b>1</b><br>One LED Row | <b>1L</b><br>1' x 1' | <b>(Blank)</b><br>Standard White<br><br><b>BLK</b><br>Matte Black<br><br><b>CS</b><br>Camaro Silver<br><br><b>BZ</b><br>Statuary Bronze<br><br>See <a href="#">CUSTOM COLORS</a> for Options<br><br>*Additional Colors Available Upon Request | <b>TP</b><br>Tamper Proof Screws<br><br><b>SMA</b><br>Pendant Mounting Adapter (Safety Cable Set Included)<br><br>*Leave Blank if Not Specified<br><br><a href="#">Additional Mechanical Options</a> | <b>BPL1.5</b><br>Emergency Battery Pack, Nom. 1500 lm<br><br><b>MSxx</b><br>Motion Sensor<br><br><b>PCS</b><br>Photocell Sensor<br><br><b>WLC(LED RU)</b><br>EnOcean Wireless Control<br><br>See <a href="#">SENSOR OPTIONS</a> for Options<br><br>*Leave Blank if Not Specified<br><br><a href="#">Additional Electrical Options</a> | <b>DRDM740</b><br>3000 lumens system, 0-10V Dimming Driver, 740mA<br><br><b>1DRCDM1050</b><br>4000 lumens system, 0-10V and Step Dimming Combined Driver, 1050mA | <b>UNV</b><br>120V-277V | <b>840</b><br>80+CRI / 4000K Color Temp.<br><br><b>850</b><br>80+CRI / 5000K Color Temp.<br><br>*Additional Color Temp. Available |

**SYSTEM DATA**

THESE ARE THE MOST POPULAR LUMEN PACKAGES. PLEASE CONSULT FACTORY FOR ADDITIONAL SYSTEM DATA.

| LED LUMEN PACKAGE     | NORMAL AMBIENT TEMPERATURE PRODUCT CODE | DELIVERED LUMENS | SYSTEM WATTS | LUMINAIRE EFFICACY | AMBIENT TEMP. | FLUORESCENT EQUIVALENT | IES FILES                |
|-----------------------|-----------------------------------------|------------------|--------------|--------------------|---------------|------------------------|--------------------------|
| 3000 Lumens (Nominal) | BCL100-1-1L-DRDM740-UNV-840             | 3172 lm          | 29 W         | 109.4 lm/W         | -20°C / 35°C  | 3-F17T8                | *                        |
|                       | BCL100-1-1L-BP-DRDM740-UNV-840          |                  |              |                    |               |                        | *                        |
|                       | BCL100-1-1L-MSx-DRDM740-UNV-840         |                  |              |                    |               |                        | *                        |
|                       | BCL100-1-1L-MSx-BP-DRDM740-UNV-840      |                  |              |                    |               |                        | <a href="#">LA-T2207</a> |
| 4000 Lumens (Nominal) | BCL100-1-1DRCDM1050-UNV-840 *           | 4042 lm          | 41 W         | 98.6 lm/W          | -20°C / 35°C  | 4-F17T8                | *                        |
|                       | BCL100-1-1L-BP-1DRCDM1050-UNV-840 *     |                  |              |                    |               |                        | *                        |
|                       | BCL100-1-1L-MSx-1DRCDM1050-UNV-840 *    |                  |              |                    |               |                        | *                        |
|                       | BCL100-1-1L-MSx-BP-1DRCDM1050-UNV-840 * |                  |              |                    |               |                        | <a href="#">LA-T2293</a> |

**NOTE:**

System data above is based on 120V input voltage. DLC system data\* based on DLC testing parameters.

Actual performance may differ as a result of end-user environment and application.

This fixture has been tested and listed in accordance with UL Standards. L.A. Lighting certifies that it will operate safely when installed properly, and within an ambient temperature range noted in the system data table.



Additional lumen packages and color temperatures available.

**PERFORMANCE DATA**

[VIEW LIGHTING FACTS](#)

[VIEW PHOTOMETRICS](#)



**Los Angeles Lighting Mfg. Co.**  
Headquarters  
10141 Olney Street  
El Monte, CA 91731  
Made in the USA  
Contact Us  
T: 626-454-8300  
F: 626-454-8399  
www.lalighting.com



Due to continued product improvements and enhancements, Los Angeles Lighting Manufacturing Company reserves the right to alter specifications, dimensions, data, and/or materials without notice. Please visit our website to view the most current information.

**MADE IN THE U.S.A.**

Revised 06-06-19

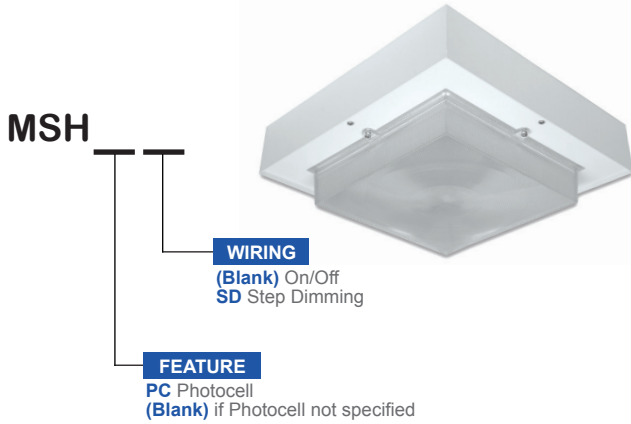
**WARNING**

**SENSOR OPTIONS**

**PHOTOCELL - EXTERNAL BUTTON DESIGN**

- PCS - Photocell Sensor**
- Turns light ON/OFF based on light levels
  - Fixture mounting height 8-45'
  - Universal Voltage (120V-277V)

**HIGH FREQUENCY - INTERNALLY MOUNTED BEHIND FIXTURE LENS**



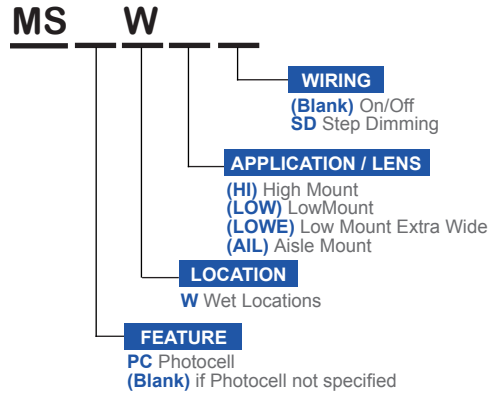
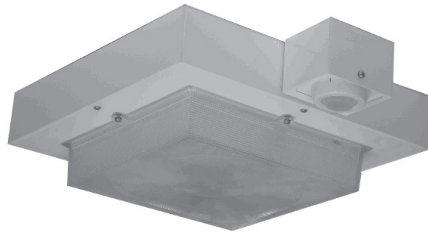
**MSH - Motion Sensor High Frequency (Microwave)**

- Super high frequency motion sensor (also known as microwave sensor) which detects movement when installed behind low density fixture materials, such as polycarbonate, acrylic and glass diffusers
- Turns light ON/OFF based on motion detection
- Fixture mounting height ~30'
- Universal Voltage (120V-277V)

**MSHPC - Motion Sensor High Frequency (Microwave) with Photocell Option**

- Super high frequency motion sensor (also known as microwave sensor) which detects movement when installed behind low density fixture materials, such as polycarbonate, acrylic and glass diffusers
- Holds lights OFF when sufficient daylight is present regardless of motion detection
- Fixture is 100% on when it detects motion and will turn off after time delay
- Selectable sensitivity and detection area
- Fixture mounting height ~30'
- Universal Voltage (120V-277V)
- Photocell is disabled by default

**PASSIVE INFRARED - SENSOR ON ATTACHED SENSOR BOX**



**CONTROLS AND SENSORS**

**WLC(LED RU) - EnOcean® LED Relay Zone Controller**

- Supports a single LED fixture or multiple daisy chained LED fixtures
- Module installed inside lighting fixture

**ESRPU-W-EO - EnOcean® Rocker Switch – Single – Surface Mount**

- Wireless single rocker switch with mounting plate
- No batteries needed

**ESDRPU-W-EO - EnOcean® Rocker Switch – Double – Surface Mount**

- Wireless double rocker switch with mounting plate
- No batteries needed

**S3054-N30 - EnOcean® Navigan NWC 300U – Commissioning Tool**

- Navigan Wireless Commissioner is used to configure EnOcean controllers & sensors
- It can be used to define link tables, change parameters/settings, and to edit & store projects
- Configuration settings can be saved and cloned to enable quick configuration
- Connectivity is through the NWC 300U USB Stick

**EOSWU-W-EO - EnOcean® Occupancy Sensor – Wall Mount**

- Wireless wall mounted occupancy sensor
- Solar powered - no batteries needed (coin battery operated in low light conditions)
- PIR motion sensor with both wide angle (50') and long range (100') options
- Mounting height: 6-8 feet

**EOSCU-W-EO - EnOcean® Occupancy Sensor – Ceiling Mount**

- Wireless ceiling mounted occupancy sensor
- Solar powered - no batteries needed (coin battery operated in low light conditions)
- PIR motion sensor with 360 degree viewing angle lens (34' diameter)
- Mounting height: 7-10 feet

**ELLSU-W-EO - EnOcean® Light Level Sensor – Ceiling Mount**

- Light Level sensor that measures and reports the level of available natural light
- Solar powered - no batteries needed (coin battery operated in low light conditions)
- Enables implementation of daylight harvesting control systems
- Mounting position: At the ceiling, close to ambient light source



**Los Angeles Lighting Mfg. Co.**  
Headquarters  
10141 Olney Street  
El Monte, CA 91731  
Made in the USA

Contact Us  
T: 626-454-8300  
F: 626-454-8399  
www.lalighting.com



Due to continued product improvements and enhancements, Los Angeles Lighting Manufacturing Company reserves the right to alter specifications, dimensions, data, and/or materials without notice. Please visit our website to view the most current information.

**MADE IN THE U.S.A.**

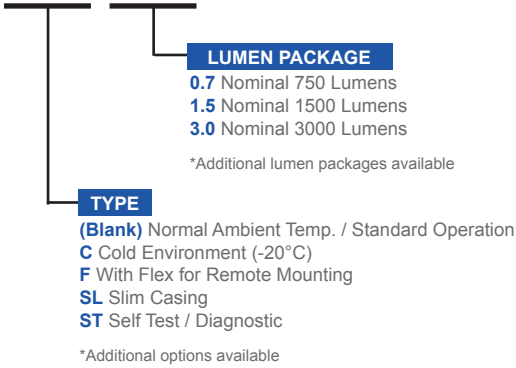
Revised 06-06-19

**WARNING**

**BATTERY PACK OPTIONS**

PLEASE CONSULT FACTORY TO SEE IF YOUR SELECTED BATTERY PACK OPTION WORKS WITH THIS FIXTURE.

**BPL**

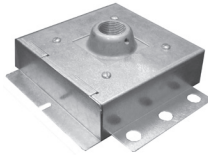


**ACCESSORIES**

**SMA**

- Pendant Mounting Adapter
- 20 ga. die formed galvanized steel construction
- Die cast aluminum hub for 3/4" pipe pre-installed
- Designed for single point pendant mount applications
- Negates wet location listing

Note: Must request pre-punched holes from factory.



**CUSTOM COLORS**

- BLK - Matte Black**
- CS - Camaro Silver**
- BZ - Statuary Bronze**

Variety of RAL colors & Axalta/DuPont colors available upon request.



**Los Angeles Lighting Mfg. Co.**  
 Headquarters  
 10141 Olney Street  
 El Monte, CA 91731  
 Made in the USA

Contact Us  
 T: 626-454-8300  
 F: 626-454-8399  
 www.lalighting.com




Due to continued product improvements and enhancements, Los Angeles Lighting Manufacturing Company reserves the right to alter specifications, dimensions, data, and/or materials without notice. Please visit our website to view the most current information.

**MADE IN THE U.S.A.**

Revised 06-06-19  
**WARNING**

**LED lighting facts**

**BCL100 - 4000 Lumens System  
with Emergency Battery Pack  
L70 performance at 136,000 hours**



**LED**  
**lighting facts**<sup>®</sup>  
A Program of the U.S. DOE

BCL100 / 4000LM

---


|                                   |             |
|-----------------------------------|-------------|
| <b>Light Output (Lumens)</b>      | <b>4042</b> |
| <b>Watts</b>                      | <b>43.9</b> |
| <b>Lumens per Watt (Efficacy)</b> | <b>92</b>   |

---

|                             |           |
|-----------------------------|-----------|
| <b>Color Accuracy</b>       | <b>84</b> |
| Color Rendering Index (CRI) |           |

---

**Light Color**  
Correlated Color Temperature (CCT) **4165 (Bright White)**



Warm White
Bright White
Daylight

2700K
3000K
4500K
6500K

All results are according to IESNA LM-79-2008: *Approved Method for the Electrical and Photometric Testing of Solid-State Lighting*. The U.S. Department of Energy (DOE) verifies product test data and results.

**Visit [www.lightingfacts.com](http://www.lightingfacts.com) for the *Label Reference Guide*.**

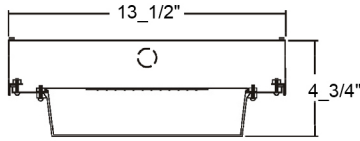
Registration Number: 76RP-B2NRYA (12/5/2013)  
Model Number: BCL100-1-1L-MS-BP-1DRCDM1050-UNV-840  
Type: Luminaire - Canopy



**PHOTOMETRIC DATA**

**BCL100-1-1L-MSx-BP-DRDM740-UNV-840**

TEST NO.=LA-T2207  
 LED SYSTEM=144 LED MODULE  
 NO. OF MODULE=1  
 SYSTEM WATT (W)=31.94  
 CRI=85  
 CCT (K)=4000  
 L70(Hrs.)=168,000  
 PHOTOMETRY TYPE=C



**CANDLEPOWER**

| ANGLE | END | 45  | CROSS |
|-------|-----|-----|-------|
| 0     | 963 | 963 | 963   |
| 5     | 959 | 958 | 958   |
| 15    | 942 | 942 | 939   |
| 25    | 918 | 906 | 914   |
| 35    | 869 | 863 | 869   |
| 45    | 730 | 731 | 729   |
| 55    | 529 | 495 | 527   |
| 65    | 342 | 326 | 341   |
| 75    | 214 | 215 | 215   |
| 85    | 103 | 122 | 108   |
| 90    | 68  | 71  | 74    |
| 95    | 58  | 41  | 63    |
| 105   | 39  | 19  | 35    |
| 115   | 29  | 9   | 16    |
| 125   | 19  | 0   | 0     |
| 135   | 10  | 0   | 0     |
| 145   | 0   | 0   | 0     |
| 155   | 0   | 0   | 0     |
| 165   | 0   | 0   | 0     |
| 175   | 0   | 0   | 0     |
| 180   | 0   | 0   | 0     |

**ZONAL LUMEN SUMMARY**

| DEGREES | LUMENS | % FIXTURE |
|---------|--------|-----------|
| 0-30    | 779    | 24.6      |
| 0-40    | 1319   | 41.6      |
| 0-60    | 2340   | 73.8      |
| 0-90    | 3026   | 95.4      |
| 90-120  | 136    | 4.3       |
| 90-150  | 146    | 4.6       |
| 90-180  | 146    | 4.6       |
| 0-180   | 3172   | 100       |

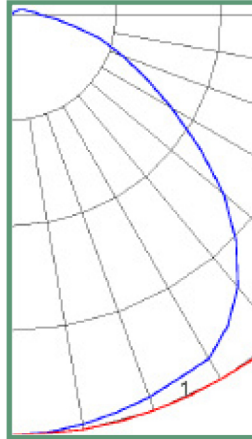
Lumen Output = 3172 lumens  
 Luminaire Efficacy = 99 lm/w

**SPACING CRITERION**

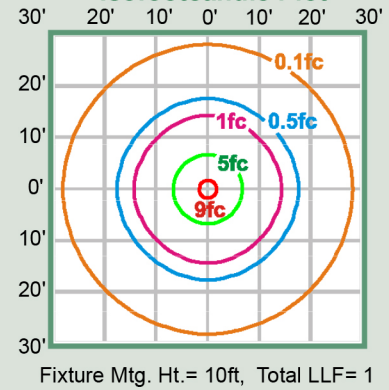
| ALONG | ACROSS |
|-------|--------|
| 1.40  | 1.40   |

**System Spec. Matrix**

|              | With<br>Emergency BP | Without<br>Emergency BP |
|--------------|----------------------|-------------------------|
| Sensor       | Yes                  | Yes                     |
| System Watts | 32                   | 29                      |
| Lumen Output | 3172                 | 3172                    |
| Efficacy     | 99 lm/w              | 109 lm/w                |
| CCT          | 4000K                | 4000K                   |
| CRI          | 85                   | 85                      |
| L70          | 168,000              | 168,000                 |

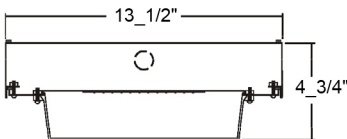


**Isofootcandle Plot**



**BCL100-1-1L-MSx-BP-1DRCDM1050-UNV-840**

TEST NO.=LA-T2293  
 LED SYSTEM=144 LED MODULE  
 NO. OF MODULE=1  
 SYSTEM WATT (W)=43.90  
 CRI=84  
 CCT (K)=4000  
 L70(Hrs.)=136,000  
 PHOTOMETRY TYPE=C



**CANDLEPOWER**

| ANGLE | END  | 45   | CROSS |
|-------|------|------|-------|
| 0     | 1235 | 1235 | 1235  |
| 5     | 1234 | 1232 | 1229  |
| 15    | 1210 | 1212 | 1209  |
| 25    | 1179 | 1166 | 1175  |
| 35    | 1113 | 1106 | 1112  |
| 45    | 927  | 931  | 927   |
| 55    | 674  | 629  | 668   |
| 65    | 440  | 415  | 436   |
| 75    | 272  | 271  | 272   |
| 85    | 133  | 151  | 136   |
| 90    | 88   | 106  | 92    |
| 95    | 77   | 82   | 77    |
| 105   | 48   | 36   | 41    |
| 115   | 33   | 19   | 16    |
| 125   | 21   | 12   | 12    |
| 135   | 13   | 14   | 13    |
| 145   | 0    | 0    | 0     |
| 155   | 0    | 0    | 0     |
| 165   | 0    | 0    | 0     |
| 175   | 0    | 0    | 0     |
| 180   | 0    | 0    | 0     |

**ZONAL LUMEN SUMMARY**

| DEGREES | LUMENS | % FIXTURE |
|---------|--------|-----------|
| 0-30    | 1002   | 24.8      |
| 0-40    | 1693   | 41.9      |
| 0-60    | 2991   | 74.0      |
| 0-90    | 3866   | 95.6      |
| 90-120  | 155    | 3.8       |
| 90-150  | 177    | 4.4       |
| 90-180  | 177    | 4.4       |
| 0-180   | 4042   | 100.0     |

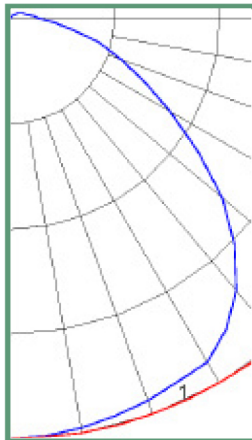
Lumen Output = 4042 lumens  
 Luminaire Efficacy = 92 lm/w

**SPACING CRITERION**

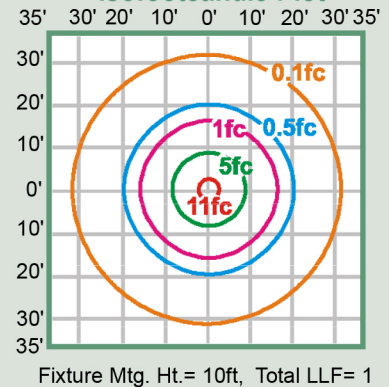
| ALONG | ACROSS |
|-------|--------|
| 1.40  | 1.40   |

**System Spec. Matrix**

|              | With<br>Emergency BP | Without<br>Emergency BP |
|--------------|----------------------|-------------------------|
| Sensor       | Yes                  | Yes                     |
| System Watts | 44                   | 41                      |
| Lumen Output | 4042                 | 4042                    |
| Efficacy     | 92 lm/w              | 99 lm/w                 |
| CCT          | 4000K                | 4000K                   |
| CRI          | 84                   | 84                      |
| L70          | 136,000              | 136,000                 |



**Isofootcandle Plot**



**LOS ANGELES LIGHTING MFG. CO.**

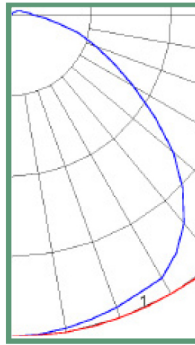
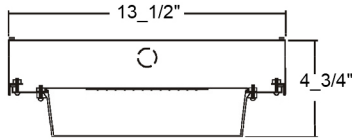
10141 OLNEY ST. / EL MONTE, CA 91731

TEL 626-454-8300 | FAX 626-454-8399 | www.lalighting.com

**PHOTOMETRIC DATA**

**BCL100-1-1L-BP-1DRCDMxxx-UNV-840  
(Emergency Mode)**

TEST NO.=LA-T2302  
LED SYSTEM=144 LED MODULE  
NO. OF MODULE=1  
CRI=85  
CCT (K)=4000  
PHOTOMETRY TYPE=C



**CANDLEPOWER**

| ANGLE | END | 45  | CROSS |
|-------|-----|-----|-------|
| 0     | 445 | 445 | 445   |
| 5     | 450 | 448 | 449   |
| 15    | 439 | 441 | 438   |
| 25    | 430 | 427 | 429   |
| 35    | 403 | 404 | 403   |
| 45    | 341 | 342 | 340   |
| 55    | 248 | 239 | 247   |
| 65    | 161 | 158 | 161   |
| 75    | 100 | 102 | 101   |
| 85    | 55  | 59  | 56    |
| 90    | 27  | 31  | 28    |
| 95    | 17  | 19  | 18    |
| 105   | 9   | 8   | 8     |
| 115   | 3   | 1   | 2     |
| 125   | 0   | 0   | 0     |
| 135   | 0   | 0   | 0     |
| 145   | 0   | 0   | 0     |
| 155   | 0   | 0   | 0     |
| 165   | 0   | 0   | 0     |
| 175   | 0   | 0   | 0     |
| 180   | 0   | 0   | 0     |

**ZONAL LUMEN SUMMARY**

| DEGREES | LUMENS | % FIXTURE |
|---------|--------|-----------|
| 0-30    | 366    | 25.1      |
| 0-40    | 619    | 42.5      |
| 0-60    | 1102   | 75.7      |
| 0-90    | 1423   | 97.37     |
| 90-120  | 33     | 2.3       |
| 90-150  | 33     | 2.3       |
| 90-180  | 33     | 2.3       |
| 0-180   | 1456   | 100       |

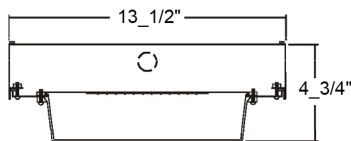
Lumen Output = 1456 lumens  
Emergency power pack operates for minimum of 90 minutes.

**SPACING CRITERION**

| ALONG | ACROSS |
|-------|--------|
| 1.40  | 1.40   |

**BCL100-1-1L-MS-BP-1DRCDM1050-UNV-850**

TEST NO.= XXX  
LED SYSTEM=100 LED MODULE  
NO. OF MODULE=1  
SYSTEM WATT (W)=44  
CRI=80+  
CCT (K)=5000  
L70(Hrs.)=136,000  
PHOTOMETRY TYPE=C



**CANDLEPOWER**

| ANGLE | END  | 45   | CROSS |
|-------|------|------|-------|
| 0     | 1269 | 1269 | 1269  |
| 5     | 1275 | 1252 | 1269  |
| 15    | 1241 | 1241 | 1243  |
| 25    | 1207 | 1209 | 1211  |
| 35    | 1139 | 1142 | 1140  |
| 45    | 961  | 968  | 961   |
| 55    | 698  | 676  | 695   |
| 65    | 458  | 447  | 455   |
| 75    | 285  | 289  | 285   |
| 85    | 152  | 168  | 158   |
| 90    | 76   | 87   | 80    |
| 95    | 47   | 53   | 77    |
| 105   | 26   | 21   | 41    |
| 115   | 10   | 3    | 16    |
| 125   | 1    | 0    | 12    |
| 135   | 0    | 0    | 13    |
| 145   | 0    | 0    | 0     |
| 155   | 0    | 0    | 0     |
| 165   | 0    | 0    | 0     |
| 175   | 0    | 0    | 0     |
| 180   | 0    | 0    | 0     |

**ZONAL LUMEN SUMMARY**

| DEGREES | LUMENS | % FIXTURE |
|---------|--------|-----------|
| 0-30    | 1032   | 25.1      |
| 0-40    | 1749   | 42.5      |
| 0-60    | 3111   | 75.6      |
| 0-90    | 4018   | 97.1      |
| 90-120  | 93     | 2.2       |
| 90-150  | 93     | 2.2       |
| 90-180  | 93     | 2.2       |
| 0-180   | 4111   | 90.4      |

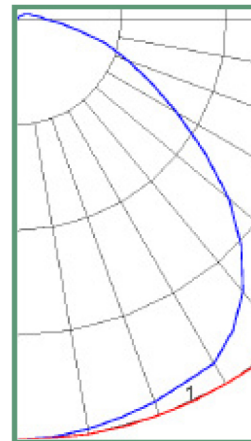
Lumen Output = 4111 lumens  
Luminaire Efficacy = 93 lm/w

**SPACING CRITERION**

| ALONG | ACROSS |
|-------|--------|
| 1.37  | 1.37   |

**System Spec. Matrix**

|                 | With<br>Emergency BP | Without<br>Emergency BP |
|-----------------|----------------------|-------------------------|
| Sensor          | Yes                  | Yes                     |
| System<br>Watts | 44                   | 41                      |
| Lumen<br>Output | 4111.4               | 4111.4                  |
| Efficacy        | 93 lm/w              | 100 lm/w                |
| CCT             | 5000K                | 5000K                   |
| CRI             | 80+                  | 80+                     |
| L70             | 136,000              | 136,000                 |



This space is intentionally left blank.

