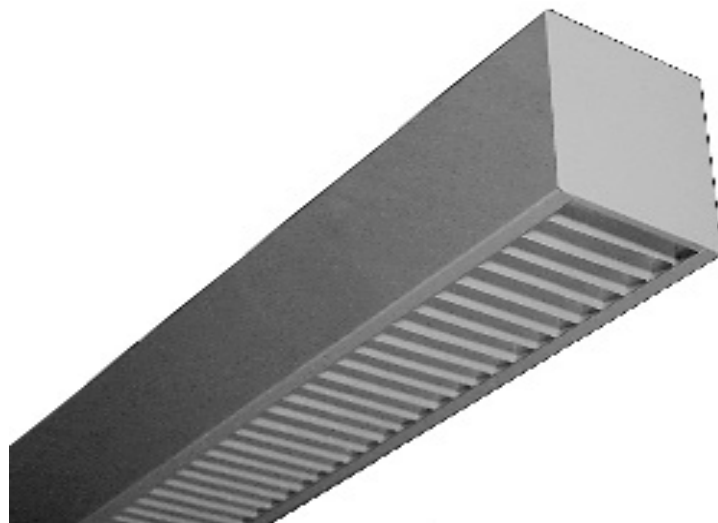




WRAPAROUND

BMF100 SERIES Wall Bracket Luminaire



- Wall Bracket Luminaire
- Up-Light and Down Light
- 20 Gauge Cold Rolled Steel Welded Housing
- Powder Coated Finish / Painted After Fabrication
- Suitable for Damp Locations
- Available with:
 - Fluorescent, LED and LED T8 (Internally Driven)
 - Variety of Lenses
 - Straight Blade Baffle Louver
 - Emergency Battery Pack
 - Stand-Off Mounting Spacer



Photometric Data and IES Files are Available on www.lalighting.com



LOS ANGELES LIGHTING MFG. CO.

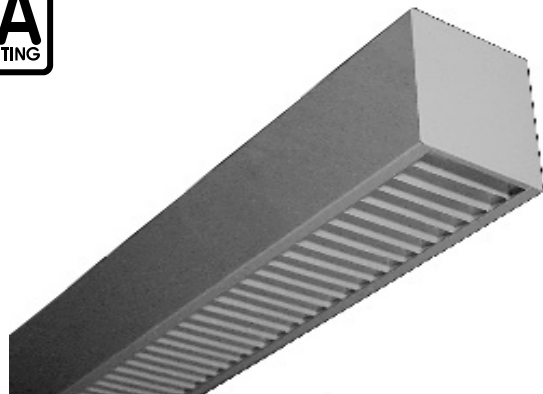
10141 OLNEY ST. / EL MONTE, CA 91731

TEL : 626-454-8300 FAX : 626-454-8399

www.lalighting.com

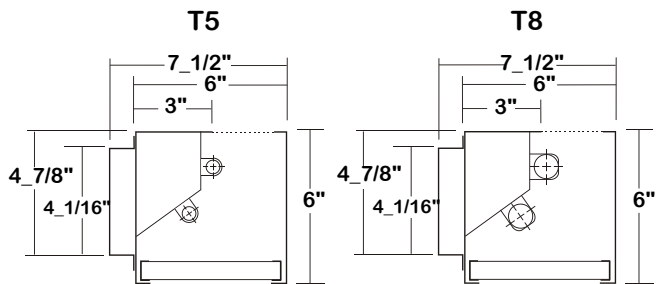
WALL BRACKET - Fluorescent

LED Equivalent Products Available on www.lalighting.com



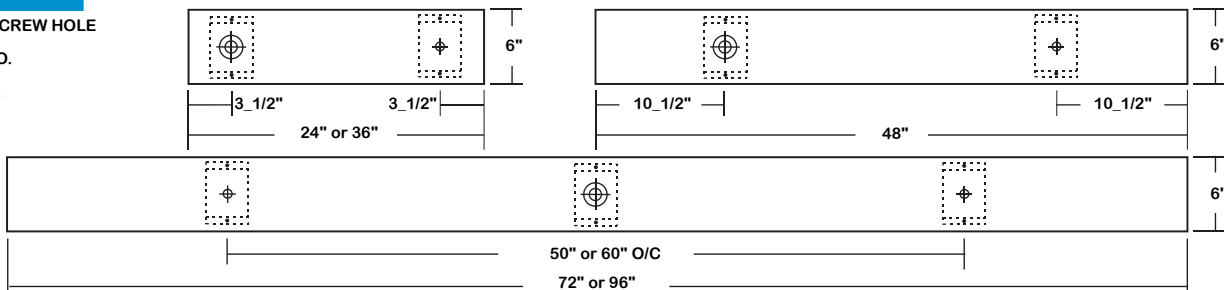
BMF100 SERIES

CROSS SECTION



BACK PLATE

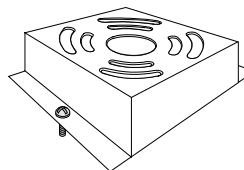
- 3/16" SCREW HOLE
- ⊕ 3/8" K.O.
- ⊕ 2" K.O.



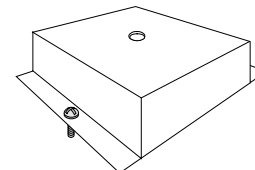
CATALOG NUMBER

	NOMINAL LENGTH	TOTAL LAMPS		NOMINAL LENGTH	TOTAL LAMPS
BMF100-1-2M	2'	1	BMF100-1-2R	2'	1
BMF100-1-3M	3'	1	BMF100-1-3R	3'	1
BMF100-1-4M	4'	1	BMF100-1-4R	4'	1
BMF100-1-6MT	6'	2	BMF100-1-6RT	6'	2
BMF100-1-8MT	8'	2	BMF100-1-8RT	8'	2
BMF100-2-2M	2'	2	BMF100-2-2R	2'	2
BMF100-2-3M	3'	2	BMF100-2-3R	3'	2
BMF100-2-4M	4'	2	BMF100-2-4R	4'	2
BMF100-2-6MT	6'	4	BMF100-2-6RT	6'	4
BMF100-2-8MT	8'	4	BMF100-2-8RT	8'	4

SPACER

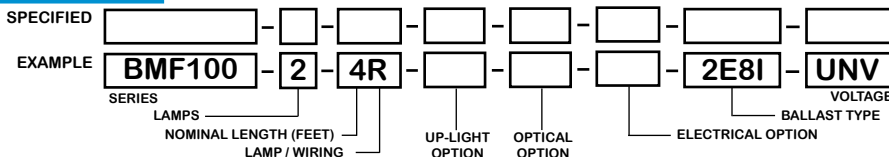


FIS-7
Feed-in spacer mounts to junction box while spaces fixture 1 1/2" from wall.



CS-3
Closed spacer, spaces fixture 1 1/2" from wall.

ORDERING GUIDE



NOTE: LAMP/WIR-
M= Miniature Bi-Pin T5
MT= Miniature Bi-Pin T5 Tandem Wiring
R= Medium Bi-Pin T8
RT= Medium Bi-Pin T8 Tandem Wiring

OPTIONS AND ACCESSORIES

● **UP-LIGHT OPTIONS**

- Uplight w/Clear Acrylic Dust Cover
- Uplight w/Clear Prismatic Acrylic Dust Cover

● **OPTICAL OPTIONS**

- Clear Prismatic Acrylic
- High Impact Clear Prismatic Acrylic
- Flat White Acrylic
- Straight Blade Baffle Louver - 1" H x 1 1/2" O/C
- Semi-Specular Parabolic Baffle Louver - 1.4" H X 2" O/C

SUFFIX

- UCA
- UPA
- SUFFIX PA
- * FWA
- SBBL
- SPBL

● **ELECTRICAL OPTIONS**

- Emergency Battery Pack
- External Line Fusing (HLR/GLR)
- Radio Interference Filters
- Night Light (Fluor. 7W or 9W)

SUFFIX

- BP*
- ELF
- RIF
- NL9

● **BALLAST OPTIONS**

- Electronic T5
- Electronic T5HO
- Electronic Step Dimming T5HO
- Electronic T8
- Electronic Step Dimming T8

SUFFIX

- E5*
- E5H
- ESDM5H
- E8*
- ESDM8*

*See Appropriate Reference Page

SPECIFICATIONS

- **TYPE**
- **CONSTRUCTION**
- **FINISH**
- **DOOR FRAME**
- **OPTICS**
- **WIRING**
- **LABELS**

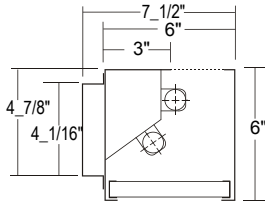
Wall mounted, metal sided, modular luminaire. Available in various lengths.
 20 ga. cold rolled steel welded housing.
 Baked white powder coated finish, minimum reflectance 90%, painted after fabrication.
 Frameless flat trim.
 Straight blade baffled louver with white finish 1" H x 1 1/2" O/C. Uplight standard, other lenses & louvers available.
 120v 60Hz., 277v 60Hz., UNV (universal voltage 120v thru 277v.) or as otherwise specified.
 U.L. Listed. Suitable for damp locations.



PHOTOMETRIC DATA

BMF100-2-4R-PA-E8

TEST NO.=LA-T0421
 LAMP TYPE=F032T8
 NO. OF LAMP=2
 LUMENS PER LAMP=2900
 WATTS PER LAMP=32
 BALLAST FACTOR=1
 PHOTOMETRY TYPE=C



CANDLEPOWER

ANGLE	0	45	90	135	180
0	1038	1038	1038	1038	1038
5	1095	1016	955	1032	997
15	1131	994	881	872	941
25	1027	858	661	705	713
35	773	618	471	471	534
45	657	395	298	327	447
55	473	260	207	229	343
65	248	146	133	144	225
75	119	76	73	74	106
85	39	25	27	24	33
90	5	5	3	3	4
95	43	43	41	37	36
105	118	135	124	91	100
115	250	282	203	153	154
125	411	428	270	209	212
135	581	491	328	261	238
145	542	476	373	316	297
155	492	470	381	371	372
165	441	434	384	367	381
175	398	392	349	368	344
180	335	335	335	335	335

ZONAL LUMEN SUMMARY

DEGREES	LUMENS	% LAMP	% FIXTURE
0-30	723	12.5	21.2
0-40	1070	18.5	31.4
0-60	1622	28.0	47.5
0-90	1899	32.7	55.6
90-120	364	6.3	10.7
90-150	1174	20.2	34.4
90-180	1514	26.1	44.4
0-180	3412	58.8	100.0

Lumen Output = 3412 lumens
 Luminaire Efficiency = 58.8%

SPACING CRITERION

ALONG	ACROSS
1.24	0.89

This space is intentionally left blank.

This space is intentionally left blank.

This space is intentionally left blank.

