

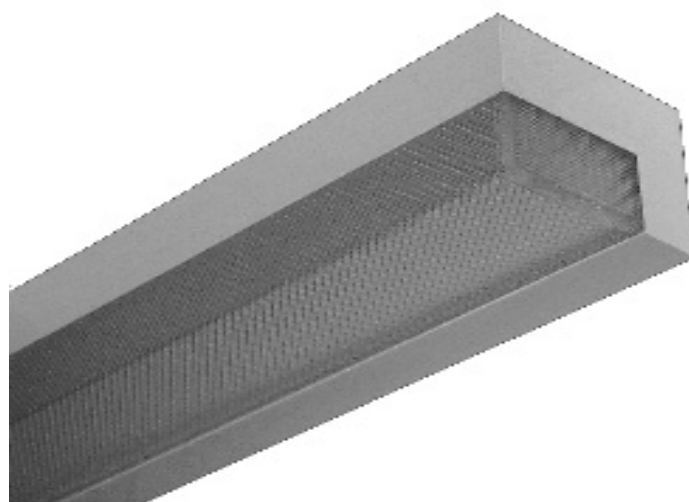


WALL BRACKET

BSQ100 SERIES



Square Wall Bracket Luminaire



- Square Wall Bracket Luminaire
- Front and Down Light
- Powder Coated Finish / Painted After Fabrication
- Suitable for Damp Locations
- Available with:
 - Fluorescent, LED and LED T8 (Internally Driven)
 - Custom Colors
 - Up-Light
 - Variety of Lenses
 - Emergency Battery Pack
 - Switch



Photometric Data and IES Files are Available on www.lalighting.com

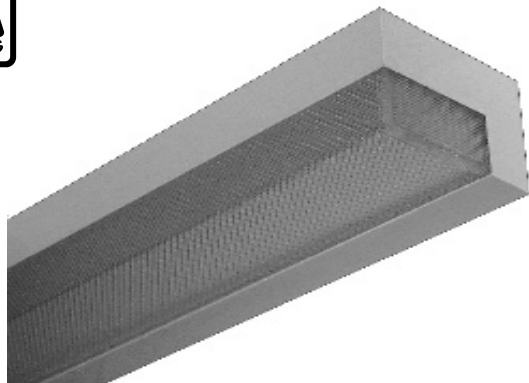


LOS ANGELES LIGHTING MFG. CO.

10141 OLNEY ST. / EL MONTE, CA 91731

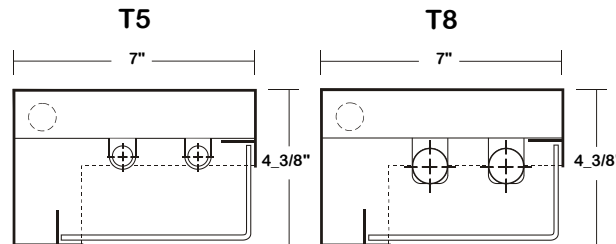
TEL : 626-454-8300 FAX : 626-454-8399

www.lalighting.com



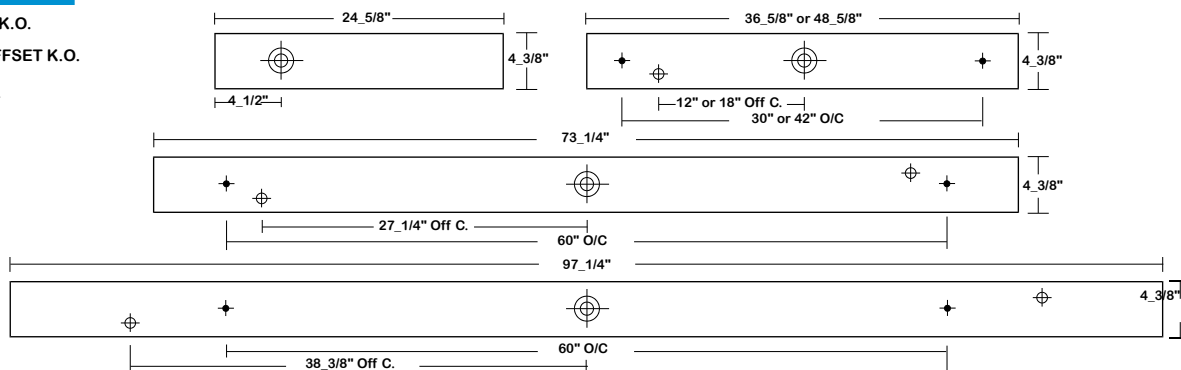
BSQ100 SERIES

CROSS SECTION



BACK PLATE

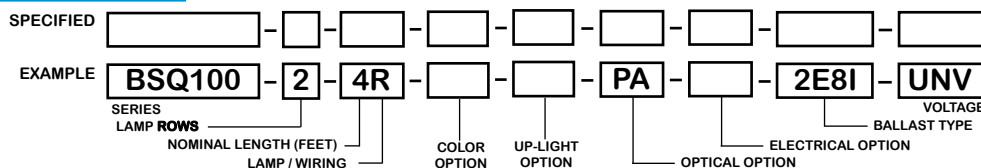
- ◆ 11/16" K.O.
- ⊕ 7/8" OFFSET K.O.
- ⊕ 2" K.O.



CATALOG NUMBER

NOMINAL LENGTH	TOTAL LAMPS	NOMINAL LENGTH	TOTAL LAMPS	NOMINAL LENGTH	TOTAL LAMPS	NOMINAL LENGTH	TOTAL LAMPS	
BSQ100-1-2M	2'	1	BSQ100-2-2M	2'	2	BSQ100-1-2R	2'	1
BSQ100-1-3M	3'	1	BSQ100-2-3M	3'	2	BSQ100-1-3R	3'	1
BSQ100-1-4M	4'	1	BSQ100-2-4M	4'	2	BSQ100-1-4R	4'	1
BSQ100-1-6MT	6'	2	BSQ100-2-6MT	6'	4	BSQ100-1-6RT	6'	2
BSQ100-1-8MT	8'	2	BSQ100-2-8MT	8'	4	BSQ100-1-8RT	8'	2

ORDERING GUIDE



NOTE: LAMP/WIR-
M= Miniature Bi-Pin T5
MT= Miniature Bi-Pin T5 Tandem Wiring
R= Medium Bi-Pin T8
RT= Medium Bi-Pin T8 Tandem Wiring

OPTIONS AND ACCESSORIES

- | | | | | | |
|---|--|--|--|---|--|
| <ul style="list-style-type: none"> ● COLOR OPTIONS White Standard Black Note: Other colors available. ● UP-LIGHT OPTIONS Uplight w/Clear Acrylic Dust Cover Uplight w/Clear Prismatic Acrylic Dust Cover | <p>SUFFIX</p> <p>BLK</p> <p>SUFFIX</p> <p>UCA</p> <p>UPA</p> | <ul style="list-style-type: none"> ● OPTICAL OPTIONS Clear Prismatic Acrylic Flat White Acrylic ● ELECTRICAL OPTIONS Emergency Battery Pack External Line Fusing (HLR/GLR) | <p>SUFFIX</p> <p>PA</p> <p>FWA</p> <p>SUFFIX</p> <p>BP*</p> <p>ELF</p> | <ul style="list-style-type: none"> ● BALLAST OPTIONS* Electronic T5 Electronic T5HO Electronic T8 Instant Start Electronic T8 Rapid Start Electronic T8HO <p>x = Number of Lamps per Ballast</p> | <p>SUFFIX</p> <p>xE5</p> <p>xE5H</p> <p>xE8I</p> <p>xE8R</p> <p>xE8H</p> |
|---|--|--|--|---|--|

*Refer to www.lalighting.com/resources for more information

SPECIFICATIONS

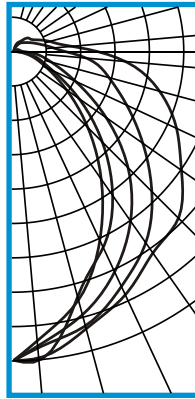
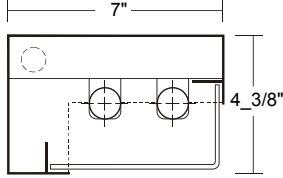
- **TYPE**
- Wall mounted luminaire with front and down light. Optional uplight.
- **CONSTRUCTION**
- 20 ga. cold rolled steel welded housing.
- **FINISH**
- Baked white powder coated finish, minimum reflectance 90%, painted after fabrication.
- **OPTICS**
- Clear prismatic acrylic lens standard. Extensive variety of lenses and diffusers available.
- **WIRING**
- 120v 60Hz., 277v 60Hz., UNV (universal voltage 120v thru 277v.) or as otherwise specified.
- **LABELS**
- U.L. Listed. Suitable for damp locations.



PHOTOMETRIC DATA

BSQ100-2-4R-PA-E8

TEST NO.=LA-T0238
 LAMP TYPE=F032T8
 NO. OF LAMP=2
 LUMENS PER LAMP=2900
 WATTS PER LAMP=32
 BALLAST FACTOR=1
 PHOTOMETRY TYPE=C



CANDLEPOWER

ANGLE	0	45	90	135	180
0	1294	1294	1294	1294	1294
5	1287	1244	1234	1297	1211
15	1197	1185	1136	1052	1069
25	1118	1079	1010	896	858
35	1024	969	856	722	636
45	979	818	674	518	431
55	857	658	465	323	259
65	752	520	276	170	145
75	630	411	158	103	80
85	468	304	84	36	23
90	352	217	42	11	4
95	247	169	30	6	0
105	160	117	25	4	0
115	116	87	20	5	0
125	89	66	15	3	0
135	81	53	7	2	0
145	55	42	7	2	0
155	42	24	4	1	0
165	24	14	2	1	0
175	2	3	1	0	0
180	3	3	3	3	3

ZONAL LUMEN SUMMARY

DEGREES	LUMENS	% LAMP	% FIXTURE
0-30	899	15.5	26.0
0-40	1430	24.6	41.3
0-60	2404	41.5	69.4
0-90	3194	55.1	92.3
90-120	199	3.4	5.8
90-150	260	4.5	7.5
90-180	268	4.6	7.7
0-180	3463	59.7	100.0

Lumen Output = 3463 lumens
 Luminaire Efficiency = 59.7%

SPACING CRITERION

ALONG	ACROSS
1.23	1.08

This space is intentionally left blank.

This space is intentionally left blank.

This space is intentionally left blank.

