

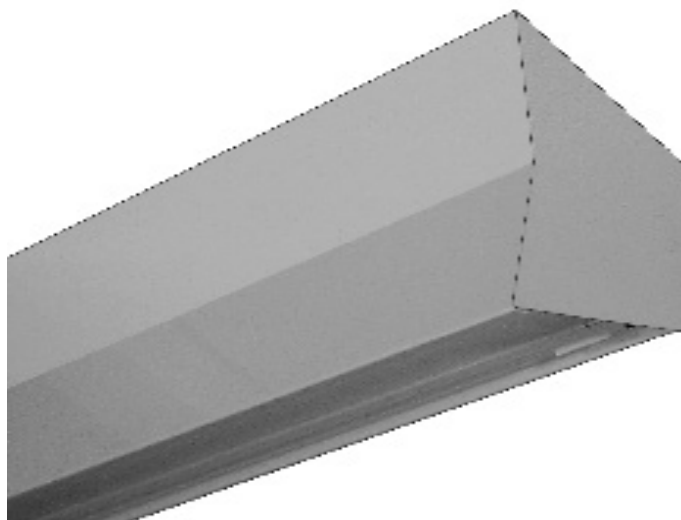


# WRAPAROUND

## BVF100 SERIES



### Vee Front Wall Bracket Luminaire



- Vee Front Wall Bracket Luminaire
- Up-Light and Down Light
- Facia and End Plates are Painted After Fabrication
- Rest Room, Reception Area, Hall Way Illuminate Signs
- Suitable for Damp Locations
- Available with:
  - Fluorescent, LED and LED T8 (Internally Driven)
  - Facia Colors
  - Emergency Battery Pack



Photometric Data and IES Files are Available on [www.lalighting.com](http://www.lalighting.com)

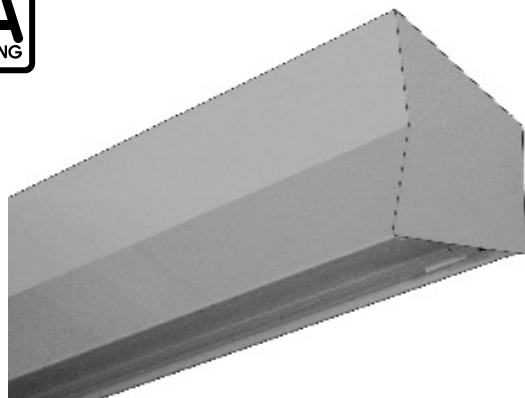


**LOS ANGELES LIGHTING MFG. CO.**

10141 OLNEY ST. / EL MONTE, CA 91731

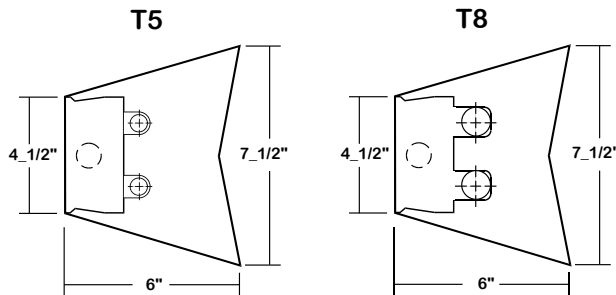
TEL : 626-454-8300 FAX : 626-454-8399

[www.lalighting.com](http://www.lalighting.com)



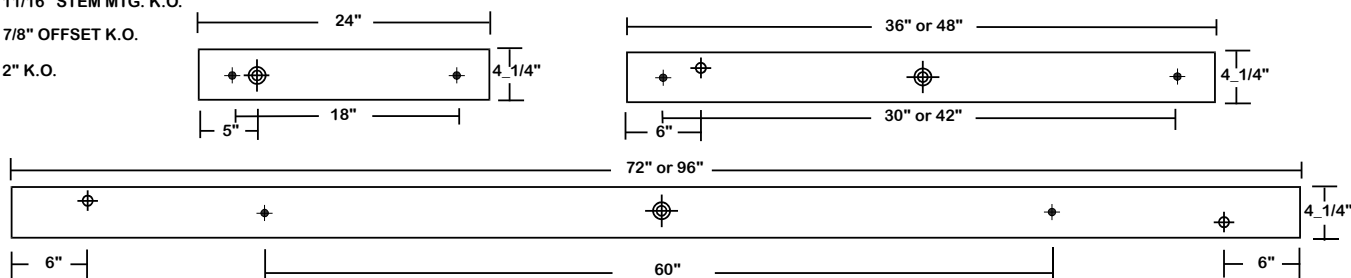
# BVF100 SERIES

## CROSS SECTION



## BACK PLATE

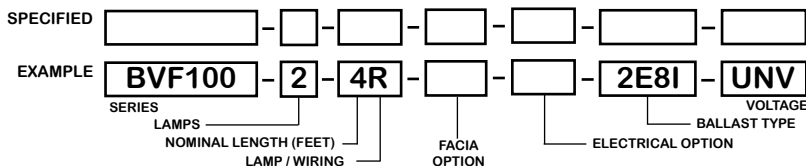
- ◆ 11/16" STEM MTG. K.O.
- ⊕ 7/8" OFFSET K.O.
- ⊕ 2" K.O.



## CATALOG NUMBER

NOMINAL LENGTH	TOTAL LAMPS	NOMINAL LENGTH	TOTAL LAMPS	NOMINAL LENGTH	TOTAL LAMPS	NOMINAL LENGTH	TOTAL LAMPS	
BVF100-1-2M	2'	1	BVF100-2-2M	2'	2	BVF100-1-2R	2'	1
BVF100-1-3M	3'	1	BVF100-2-3M	3'	2	BVF100-1-3R	3'	1
BVF100-1-4M	4'	1	BVF100-2-4M	4'	2	BVF100-1-4R	4'	1
BVF100-1-6MT	6'	2	BVF100-2-6MT	6'	4	BVF100-1-6RT	6'	2
BVF100-1-8MT	8'	2	BVF100-2-8MT	8'	4	BVF100-1-8RT	8'	2

## ORDERING GUIDE



**NOTE: LAMP/WIR-**  
 M= Miniature Bi-Pin T5  
 MT= Miniature Bi-Pin T5 Tandem Wiring  
 R= Medium Bi-Pin T8  
 RT= Medium Bi-Pin T8 Tandem Wiring

## OPTIONS AND ACCESSORIES

<ul style="list-style-type: none"> <li>● <b>FACIA OPTIONS</b></li> <li>White Standard</li> <li>Black</li> <li>Genuine Oak Facia</li> <li>Note: Other colors available.</li> </ul>	<p>SUFFIX</p> <p>BLK</p> <p>OAK</p>	<ul style="list-style-type: none"> <li>● <b>ELECTRICAL OPTIONS</b></li> <li>Emergency Battery Pack</li> <li>External Line Fusing (HLR/GLR)</li> <li>Radio Interference Filters</li> <li>Night Light (Fluor. 7W or 9W)</li> </ul>	<p>SUFFIX</p> <p>BP*</p> <p>ELF</p> <p>RIF</p> <p>NL9</p>	<ul style="list-style-type: none"> <li>● <b>BALLAST OPTIONS</b></li> <li>Electronic T5</li> <li>Electronic T5HO</li> <li>Electronic Step Dimming T5HO</li> <li>Electronic T8</li> <li>Electronic Step Dimming T8</li> </ul>	<p>SUFFIX</p> <p>E5*</p> <p>E5H</p> <p>ESDM5H</p> <p>E8*</p> <p>ESDM8*</p>
---	-------------------------------------	--	---	---	--

\*See Appropriate Reference Page

## SPECIFICATIONS

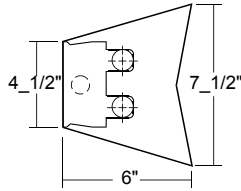
- **TYPE** Wall mounted luminaire available in various lengths and lamp configurations.
- **CONSTRUCTION** 22 ga. cold rolled steel welded housing.
- **FINISH** Baked white powder coated finish, minimum reflectance 90%, painted after fabrication. Wood veneer or painted finishes are available as specified.
- **OPTICS** Open top and bottom. V-shaped facia is standard .
- **WIRING** 120v 60Hz., 277v 60Hz., UNV (universal voltage 120v thru 277v.) or as otherwise specified.
- **LABELS** U.L. Listed. Suitable for damp locations.



**PHOTOMETRIC DATA**

BVF100-2-4R-PA-E8

TEST NO.=LA-T0423  
 LAMP TYPE=FO32T8  
 NO. OF LAMP=2  
 LUMENS PER LAMP=2900  
 WATTS PER LAMP=32  
 BALLAST FACTOR=1  
 PHOTOMETRY TYPE=C



**CANDLEPOWER**

ANGLE	0	45	90	135	180
0	389	389	389	389	389
5	603	548	464	543	638
15	842	724	485	644	681
25	941	840	506	663	713
35	710	797	502	647	703
45	524	615	472	593	611
55	289	400	415	472	486
65	70	176	288	348	351
75	0	26	162	217	259
85	0	0	44	157	234
90	0	0	19	160	257
95	0	0	44	159	234
105	0	25	158	210	246
115	69	181	289	347	363
125	283	402	407	484	485
135	520	608	475	583	611
145	707	792	502	646	723
155	937	842	514	656	726
165	815	717	484	662	685
175	624	503	459	573	608
180	437	437	437	437	437

**ZONAL LUMEN SUMMARY**

DEGREES	LUMENS	% LAMP	% FIXTURE
0-30	564	9.7	12.4
0-40	981	16.9	21.6
0-60	1792	30.9	39.4
0-90	2273	39.2	50.0
90-120	479	8.3	10.6
90-150	1704	29.4	37.5
90-180	2269	39.1	50.0
0-180	4542	78.3	100.0

Lumen Output = 4542 lumens  
 Luminaire Efficiency = 78.3%

**SPACING CRITERION**

ALONG	ACROSS
1.96	1.81

This space is intentionally left blank.

This space is intentionally left blank.

This space is intentionally left blank.

