



WRAPAROUND

CIT400 SERIES



Fully Gasketed Enclosure Luminaire



- Fiberglass Housing and Stainless Steel Latches
- Poured In Place Polyurethane Gasket
- High Impact Acrylic Lens
- Suitable for Damp Locations
- IP67 Rated Enclosure
- Available with :
 - Fluorescent, LED and LED T8 (Internally Driven)
 - 95% Enhanced Specular Aluminum Reflectors
 - Clear Polycarbonate Lens / High Impact Frosted Acrylic Lens
 - Stainless Steel Ceiling Mount Hanger
 - Stainless Steel V-Hook
 - Stainless Steel Tamper Proof Screws
 - Lens Tether
 - NSF - Splash Zone / Non-Food Zone



Photometric Data and IES Files are Available on www.lalighting.com



LOS ANGELES LIGHTING MFG. CO.

10141 OLNEY ST. / EL MONTE, CA 91731

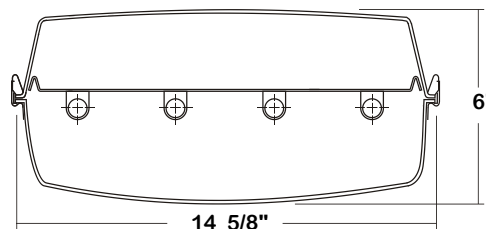
TEL : 626-454-8300 FAX : 626-454-8399

www.lalighting.com



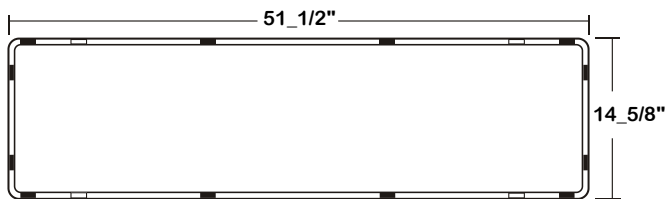
CIT400 SERIES

CROSS SECTION



BACK PLATE

- STAINLESS STEEL LATCH
- MOUNTING BRACKET



CATALOG NUMBER

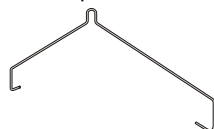
	NOMINAL LENGTH	TOTAL LAMPS
CIT400-4-4R	4'	4
CIT400-5-4R	4'	5
CIT400-6-4R	4'	6
CIT400-4-4M	4'	4
CIT400-5-4M	4'	5
CIT400-6-4M*	4'	6

Note: *6-lamp T5HO units should not operate in ambient temperatures exceeding 77°F (25°C).
Other units suitable for operation in ambient not exceeding 104°F (40°C), maximum five T5HO lamps per unit.

MOUNTING ACCESSORIES

CIT4/VH

- Stainless steel V-Hook.
- Two hooks per fixture.



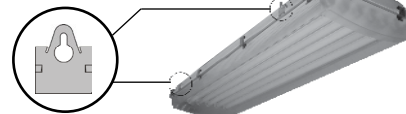
CIT4/CM

- Stainless steel ceiling mount hanger.
- Two hangers per fixture.

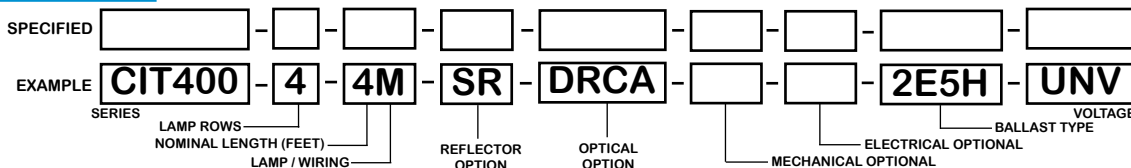


Note:

All CIT400 series product come with four stainless steel mounting tabs, two on each side of fixture housing (36" on center), tabs can be used with V-Hook, CM, cable or chain.



ORDERING GUIDE



NOTE: LAMP/WIRING* M=Miniature Bi-Pin T5 R=Medium Bi-Pin T8

OPTIONS AND ACCESSORIES

- **REFLECTOR OPTION**
Specular aluminum reflector (95%)
- **OPTICAL OPTIONS**
Clear Polycarbonate Lens
High Impact Clear Acrylic Lens
High Impact Frosted Acrylic Lens

- SUFFIX SR
- SUFFIX CPC
- SUFFIX DRCA
- SUFFIX DRFA

- **MECHANICAL OPTIONS**
Wet Location (One Watertight Hub Provided)
Stainless Steel Tamper Proof Screws
Lens Tether (Two Per Fixture)
NSF - Splash Zone / Non-Food Zone
- **ELECTRICAL OPTIONS**
Emergency Battery Pack
External Line Fusing (HLR/GLR)
Night Light (Fluor. 7W or 9W)

- SUFFIX WL
- SUFFIX TP
- SUFFIX LT
- SUFFIX SZ
- SUFFIX BP*
- SUFFIX ELF
- SUFFIX NL9

- **BALLAST OPTIONS**
Electronic T5
Electronic T5HO
Electronic Step Dimming T5HO
Electronic T8
Electronic Step Dimming T8
- **ACCESSORIES**
Stainless Steel V-Hook
Stainless Steel Ceiling Mount Hanger
Cable Suspension System

- SUFFIX E5*
- SUFFIX E5H
- SUFFIX ESDM5H
- SUFFIX E8*
- SUFFIX ESDM8*
- CAT. NO. CIT4/VH
- CIT4/CM
- *

*See Appropriate Reference Page

SPECIFICATIONS

- **TYPE**
- **CONSTRUCTION**
- **FINISH**
- **OPTICS**
- **WIRING**
- **CERTIFICATION**
- **LABELS**

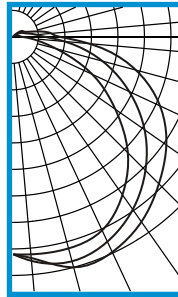
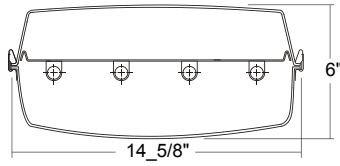
Fully enclosed and gasketed luminaire.
Fiberglass housing. 22 ga. cold rolled steel captive geartray. All stainless steel hardware.
Mounting tabs for V-Hook, chain, cable or ceiling mount hanger.
Gear tray - Baked white polyester finish, minimum reflectance 86%. (Powder coated finish available.)
4' high impact clear acrylic lens standard, water clear w/ frosted ends design. Lens secured to fiberglass housing by stainless steel latches.
UNV (universal voltage 120v thru 277v.) ballasts as available, or as otherwise specified.
Damp or wet locations / IP67, NSF splash zone / Non food zone optional.
U.L. Listed. Suitable for damp locations.



PHOTOMETRIC DATA

CIT400-4-4M-DRCA-E5H

TEST NO.=LA-T1923
 LAMP TYPE=F54T5HO
 NO. OF LAMP=4
 LUMENS PER LAMP=5000
 WATTS PER LAMP=54
 BALLAST FACTOR=1
 PHOTOMETRY TYPE=C



CANDLEPOWER

ANGLE	END	45	CROSS
0	4070	4070	4070
5	4085	4216	4161
15	4092	4342	4465
25	3976	4211	4428
35	3577	3919	4203
45	3029	3503	3962
55	2317	2994	3497
65	1609	2384	3024
75	802	1714	2366
85	315	955	1419
90	171	595	873
95	129	438	718
105	88	253	385
115	43	178	228
125	18	103	191
135	8	44	91
145	3	18	32
155	0	3	5
165	0	0	0
175	0	0	0
180	0	0	0

ZONAL LUMEN SUMMARY

DEGREES	LUMENS	% LAMP	% FIXTURE
0-30	3566	17.8	20.5
0-40	6019	30.1	34.6
0-60	11357	56.8	65.3
0-90	16332	81.7	93.9
90-120	919	4.6	5.3
90-150	1060	5.3	6.1
90-180	1061	5.3	6.1
0-180	17393	87.0	100.0

Lumen Output = 17393 lumens
 Luminaire Efficiency = 87.0%

SPACING CRITERION

ALONG	ACROSS
1.36	1.53

This space is intentionally left blank.

This space is intentionally left blank.

This space is intentionally left blank.

