



# WRAPAROUND

## COR200 SERIES



### Vee Corridor Wraparound Luminaire



- Vee Corridor Wraparound Luminaire
- End Plates are Painted After Fabrication
- Vee shape Opal Lens
- Suitable for Damp Locations
- Available with:
  - Fluorescent, LED and LED T8 (Internally Driven)
  - Emergency Battery Pack



Photometric Data and IES Files are Available on [www.lalighting.com](http://www.lalighting.com)



**LOS ANGELES LIGHTING MFG. CO.**

10141 OLNEY ST. / EL MONTE, CA 91731

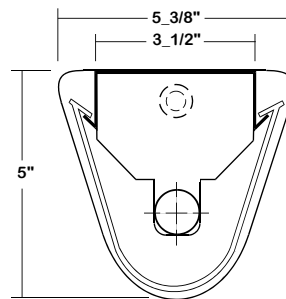
TEL : 626-454-8300 FAX : 626-454-8399

[www.lalighting.com](http://www.lalighting.com)



# COR200 SERIES

## CROSS SECTION

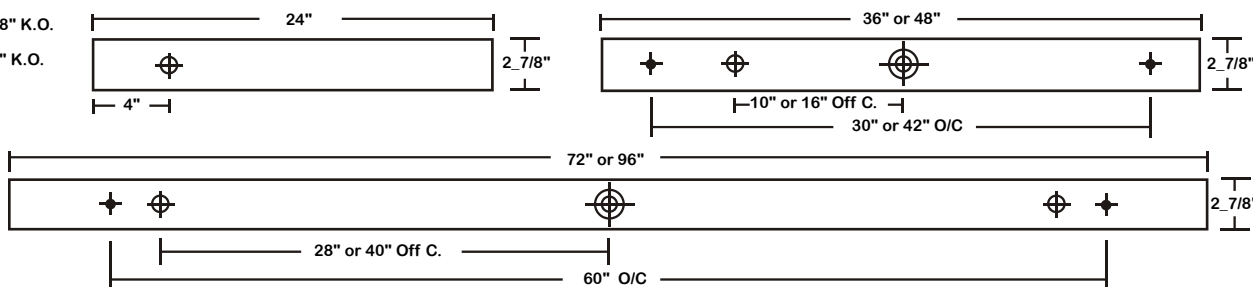


## BACK PLATE

◆ 11/16" STEM MTG. K.O.

⊕ 7/8" K.O.

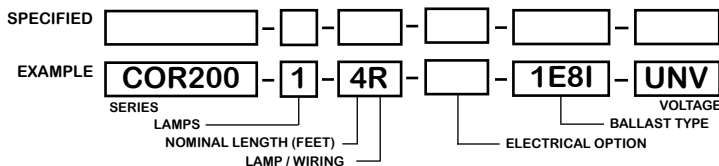
⊕ 2" K.O.



## CATALOG NUMBER

	NOMINAL LENGTH	TOTAL LAMPS		NOMINAL LENGTH	TOTAL LAMPS
COR200-1-2M	2'	1	COR200-1-2R	2'	1
COR200-1-3M	3'	1	COR200-1-3R	3'	1
COR200-1-4M	4'	1	COR200-1-4R	4'	1
COR200-1-6MT	6'	2	COR200-1-6RT	6'	2
COR200-1-8MT	8'	2	COR200-1-8RT	8'	2

## ORDERING GUIDE



**NOTE: LAMP/WIR-**  
 M= Miniature Bi-Pin T5  
 MT= Miniature Bi-Pin T5 Tandem Wiring  
 R= Medium Bi-Pin T8  
 RT= Medium Bi-Pin T8 Tandem Wiring

## OPTIONS AND ACCESSORIES

### ● ELECTRICAL OPTIONS

- Emergency Battery Pack
- External Line Fusing (HLR/GLR)
- Radio Interference Filters

SUFFIX  
 BP\*  
 ELF  
 RIF

### ● BALLAST OPTIONS

- Electronic T5
- Electronic T5HO
- Electronic Step Dimming T5HO
- Electronic T8
- Electronic Step Dimming T8

SUFFIX  
 E5\*  
 E5H  
 ESDM5H  
 E8\*  
 ESDM8\*

### ● ACCESSORIES

- Fixture Suspension System

CAT.NO.  
 \*

\*See Appropriate Reference Page

## SPECIFICATIONS

- TYPE
- CONSTRUCTION
- FINISH
- OPTICS
- WIRING
- LABELS

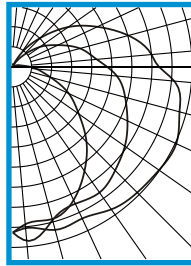
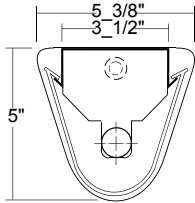
Surface mounted V-type corridor luminaire.  
 22 ga. cold rolled steel housing. (20 ga. housing available as specified)  
 Baked white polyester finish, minimum reflectance 86%. (Powder coated finish available.)  
 Extruded white acrylic diffuser with 15% impact resistant DR acrylic formulation. Diffuser hinges from either side for easy relamping.  
 120v 60Hz., 277v 60Hz., UNV (universal voltage 120v thru 277v.) or as otherwise specified.  
 U.L. Listed. Suitable for damp locations.



**PHOTOMETRIC DATA**

COR200-1-4R-E8

TEST NO.=LA-T0554  
 LAMP TYPE=FO32T8  
 NO. OF LAMP=1  
 LUMENS PER LAMP=2900  
 WATTS PER LAMP=32  
 BALLAST FACTOR=1  
 PHOTOMETRY TYPE=C



**CANDLEPOWER**

ANGLE	END	45	CROSS
0	363	363	363
5	344	382	354
15	344	344	369
25	319	330	365
35	275	334	380
45	228	318	387
55	175	300	392
65	134	277	395
75	84	254	378
85	52	229	354
90	39	206	320
95	25	185	305
105	14	154	263
115	7	112	206
125	3	78	153
135	3	42	95
145	3	17	48
155	3	5	12
165	6	4	4
175	4	4	6
180	5	5	5

**ZONAL LUMEN SUMMARY**

DEGREES	LUMENS	% LAMP	% FIXTURE
0-30	290	10.0	12.4
0-40	497	17.2	21.3
0-60	1001	34.5	42.8
0-90	1755	60.5	75.1
90-120	459	15.8	19.6
90-150	577	19.9	24.7
90-180	582	20.1	24.9
0-180	2337	80.6	100.0

Lumen Output = 2337 lumens  
 Luminaire Efficiency = 80.6%

**SPACING CRITERION**

ALONG	ACROSS
1.21	1.61

This space is intentionally left blank.

This space is intentionally left blank.

This space is intentionally left blank.

