



BAYLIGHTER™

EBY101 SERIES

High Bay Luminaire



- High Bay Luminaire Up-Light
- Quarter Turn Rotary Locking Sockets
- 95% Enhanced Specular Aluminum Reflectors
- Removable Wiring Access Plate
- Stem, Cable or Chain Mountable
- Suitable for Damp Locations
- Available with:
 - .040 Aluminum Fixture Housing
 - 90% White Aluminum Reflectors
 - Sensor
 - Emergency Battery Pack
 - Die Cast Hub for 3/4" Pipe
 - 11ga. Wire Guard



Photometric Data and IES Files are Available on www.lalighting.com



LOS ANGELES LIGHTING MFG. CO.

10141 OLNEY ST. / EL MONTE, CA 91731

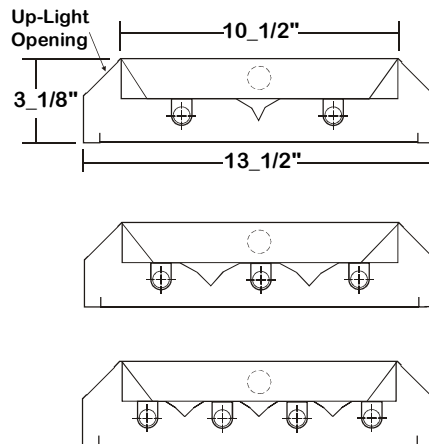
TEL : 626-454-8300 FAX : 626-454-8399

www.lalighting.com



EBY101 SERIES

CROSS SECTION



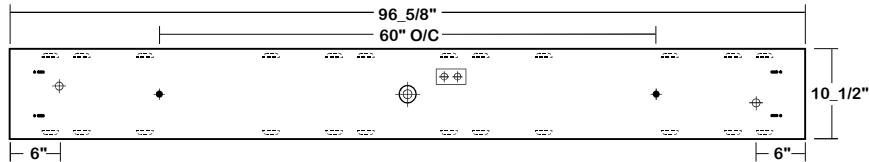
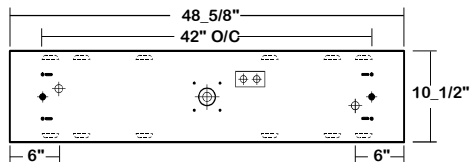
● ALUMINUM REFLECTOR SECURED WITH QUARTER TURN FASTENERS FOR EASE OF MAINTENANCE.

CATALOG NUMBER

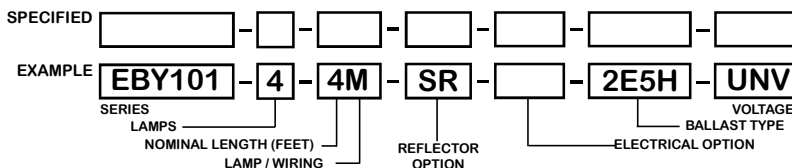
	NOMINAL LENGTH	TOTAL LAMPS		NOMINAL LENGTH	TOTAL LAMPS
EBY101-2-4M	4'	2	EBY101-2-4R	4'	2
EBY101-3-4M	4'	3	EBY101-3-4R	4'	3
EBY101-4-4M	4'	4	EBY101-4-4R	4'	4
EBY101-2-8MT	8'	4	EBY101-2-8RT	8'	4
EBY101-3-8MT	8'	6	EBY101-3-8RT	8'	6
EBY101-4-8MT	8'	8	EBY101-4-8RT	8'	8

BACK PLATE

⚡ V-HOOK
 • 3/16" K.O.
 ⚡ 11/16" STEM MTG. K.O.
 ⊕ ACCESS PLATE
 ⊕ 7/8" OFFSET K.O.
 ⊕ 2" K.O.



ORDERING GUIDE



NOTE: LAMP/WIRING* M= Miniature Bi-Pin T5 MT= Miniature Bi-Pin T5, Tandem Wiring
 R = Medium Bi-Pin T8 RT = Medium Bi-Pin T8, Tandem Wiring

OPTIONS AND ACCESSORIES

REFLECTOR OPTIONS

- Specular Aluminum Reflector (95%)
- White Aluminum Reflector (90%)

SUFFIX
SR
WR

ELECTRICAL OPTIONS

- Emergency Battery Pack
- External Line Fusing (HLR/GLR)
- Radio Interference Filters
- Motion Sensor

SUFFIX
BP*
ELF
RIF
MS

BALLAST OPTIONS

- Electronic T5
- Electronic T5HO
- Electronic Step Dimming T5HO
- Electronic T8
- Electronic Step Dimming T8

SUFFIX
E5*
E5H
ESDM5H
E8*
ESDM8*

ACCESSORIES

- Wire Guard - 11 Ga.
- Fixture Suspension System
- Ceiling Spacer
- 6" Leg Height V-Hook
- Die Cast Hub For 3/4" Pipe

CAT.NO.
WG11-EBY101
*
*
V6
HUB

*See appropriate reference page

SPECIFICATIONS

TYPE

High bay open light luminaire for surface, pendant, or chain mounting. Must be spaced a minimum of 1 1/2" from ceiling when surface mounted.

CONSTRUCTION

22 gauge cold rolled steel housing with louvered vents on top for heat removal. Quarter turn rotary locking lampholders standard. (20 ga. C.R.S. and .040 aluminum housing available as specified)

FINISH

Baked white polyester finish, minimum reflectance 86%. (Powder coated finish available.)

REFLECTOR

Specular aluminum reflector standard, 95% reflectance. (White aluminum reflector available)

UP_LIGHT

10% up-light opening standard.

WIRE GUARDS

11 ga. Chrome epoxy powder coated.

WIRING

120v 60Hz., 277v 60Hz., UNV (universal voltage 120v thru 277v.) or as otherwise specified.

LABELS

Multiple levels of switching available as specified.

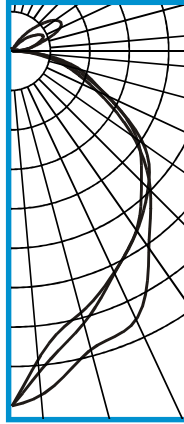
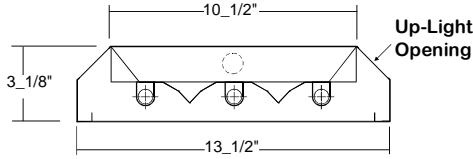
U.L. Listed. Suitable for damp locations.



PHOTOMETRIC DATA

EBY101-3-4M-SR-E5H

TEST NO.=LA-T0940
 LAMP TYPE=F54T5HO
 NO. OF LAMP=3
 LUMENS PER LAMP=5000
 WATTS PER LAMP=54
 BALLAST FACTOR=1
 PHOTOMETRY TYPE=C



CANDLEPOWER

ANGLE	END	45	CROSS
0	5020	5020	5020
5	4879	4548	4362
15	4362	3973	3819
25	4178	3451	3441
35	3380	3076	3091
45	2768	2591	2725
55	2083	2159	2261
65	1313	1485	1465
75	765	858	986
85	230	321	321
90	17	11	8
95	51	117	129
105	80	344	388
115	44	491	740
125	25	388	759
135	28	224	501
145	28	64	229
155	38	31	34
165	37	42	31
175	36	33	42
180	55	55	55

ZONAL LUMEN SUMMARY

DEGREES	LUMENS	% LAMP	% FIXTURE
0-30	3263	21.8	24.5
0-40	5246	35.0	39.4
0-60	9255	61.7	69.6
0-90	11846	79.0	89.0
90-120	832	5.5	6.3
90-150	1431	9.5	10.8
90-180	1461	9.7	11.0
0-180	13307	88.7	100.0

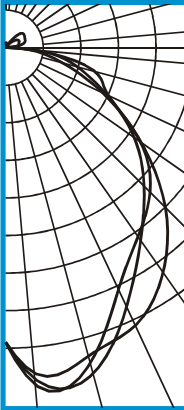
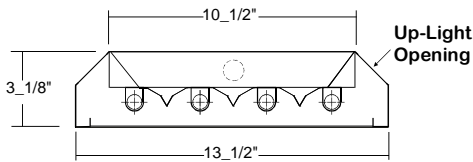
Lumen Output = 13307 lumens
 Luminaire Efficiency = 88.7%

SPACING CRITERION

ALONG	ACROSS
1.13	0.95

EBY101-4-4M-SR-E5H

TEST NO.=LA-T0937
 LAMP TYPE=F54T5HO
 NO. OF LAMP=4
 LUMENS PER LAMP=5000
 WATTS PER LAMP=54
 BALLAST FACTOR=1
 PHOTOMETRY TYPE=C



CANDLEPOWER

ANGLE	END	45	CROSS
0	5305	5305	5305
5	5879	5985	6089
15	5750	6079	5882
25	5520	5149	4804
35	4941	4236	4154
45	4066	3523	3675
55	2976	2824	2960
65	1930	2008	2039
75	1057	1333	1662
85	394	556	527
90	24	7	1
95	43	129	118
105	48	248	351
115	31	269	383
125	34	240	405
135	41	126	346
145	71	42	105
155	59	45	35
165	64	59	46
175	94	74	63
180	72	72	72

ZONAL LUMEN SUMMARY

DEGREES	LUMENS	% LAMP	% FIXTURE
0-30	4639	23.2	26.3
0-40	7398	37.0	41.9
0-60	12860	64.3	72.8
0-90	16683	83.4	94.5
90-120	561	2.8	3.2
90-150	932	4.7	5.3
90-180	977	4.9	5.5
0-180	17660	88.3	100.0

Lumen Output = 17660 lumens
 Luminaire Efficiency = 88.3%

SPACING CRITERION

ALONG	ACROSS
1.41	1.24

This space is intentionally left blank.

This space is intentionally left blank.

