



# BAYLIGHTER™

## EBY150 SERIES

### High Bay Luminaire



- High Bay Luminaire
- Quarter Turn Rotary Locking Sockets
- Frame & Lens Assembly With Safety Cables
- One Way Polyurethane Gasketed
- Removable Wiring Access Plate
- Stem, Cable or Chain Mountable
- Suitable for Damp Locations
- Available with:
  - Fluorescent, LED and LED T8 (Internally Driven)
  - .040 Aluminum Fixture Housing
  - 95% Enhanced Specular Aluminum Reflectors
  - Variety of Lenses
  - Emergency Battery Pack
  - Sensor
  - 11ga. Wire Guard
  - Die Cast Hub For 3/4" Pipe (4' Fixture Only)

Photometric Data and IES Files are Available on [www.lalighting.com](http://www.lalighting.com)



**LOS ANGELES LIGHTING MFG. CO.**

10141 OLNEY ST. / EL MONTE, CA 91731

TEL : 626-454-8300 FAX : 626-454-8399

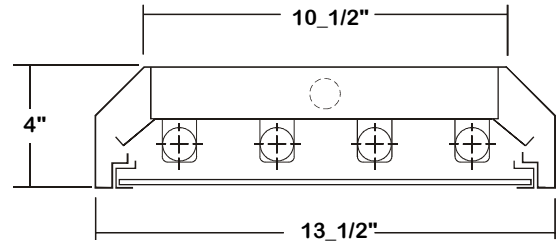
[www.lalighting.com](http://www.lalighting.com)

# BAYLIGHTER™ - LED T8 (Internally Driven)



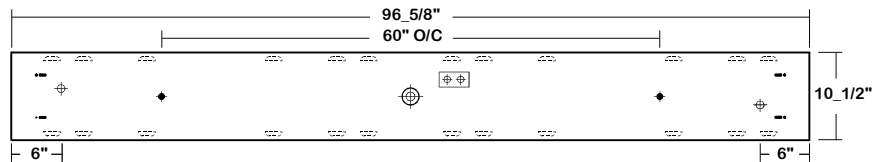
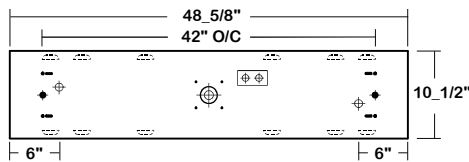
## EBY150 SERIES - LED T8

### CROSS SECTION



### BACK PLATE

- V-HOOK • 3/16" K.O. • 11/16" STEM MTG. K.O. • ACCESS PLATE • 7/8" OFFSET K.O. • 2" K.O.



### CATALOG NUMBER

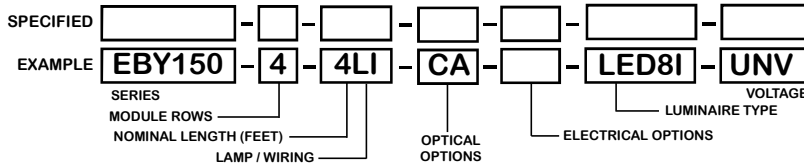
	NOMINAL LENGTH	TOTAL MODULES
EBY150-2-4Lx	4'	2
EBY150-2-8LxT	8'	4
EBY150-3-4Lx	4'	3
EBY150-3-8LxT	8'	6
EBY150-4-4Lx	4'	4
EBY150-4-8LxT	8'	8

### TS2 - LED Luminaire On/Off Safety Switch



- Easily accessible on exterior of wire way.
- Allows individual fixture to be switched ON/OFF during re-lamping or Maintenance.
- Prevents damage to lamp and electrical shock during lamping and re-lamping.
- Allows safe entry to wire way channel where power connector can be disconnected for maintenance to fixture.

### ORDERING GUIDE



### LAMP / WIRING

**LI = LED T8 internal driver light tube.**  
Both ends powered.  
Shunted sockets used.



**LR = LED T8 internal driver light tube.**  
Single end powered.  
Non-shunted sockets used.



### OPTIONS AND ACCESSORIES

#### OPTICAL OPTIONS

- Clear Acrylic
- \* Other Lens Available Upon Request

SUFFIX  
CA

#### ELECTRICAL OPTIONS

- LED Luminaire ON/OFF Safety Switch
- Motion Sensor

SUFFIX  
TS2  
MS

#### ACCESSORIES

- Wire Guard-11 Ga.
- Fixture Suspension System
- Ceiling Spacer
- 6" Leg Height V-Hook
- Die Cast Hub For 3/4" Pipe

CAT. NO.  
WG11-EBY150  
\*  
\*  
V6  
HUB

\*See appropriate reference page

### SPECIFICATIONS

- **TYPE** High bay luminaire for surface, pendant, or chain mounting for LED T8 internal driver light tube (s)\*\*.
- **CONSTRUCTION** 22 gauge cold rolled steel housing with louvered vents on top for heat removal. Quarter turn rotary locking lampholders standard. (20 ga. C.R.S. and .040 aluminum housing available as specified)
- **FINISH** Baked white polyester finish, minimum reflectance 86%. (Powder coated finish available.)
- **REFLECTOR** 24 ga. pre-paint cold rolled steel flat white reflector, minimum reflectance 86%.
- **DOOR FRAME** 20 ga. cold rolled steel door frame. T-hinges and positive spring loaded latches. Safety cables attached.
- **OPTICS** Clear acrylic lens standard. Extensive variety of lenses, diffusers and louvers available.
- **WIRE GUARDS** 11 ga. powder coated.
- **WIRING** Operates LED T8 internal driver light tube (s)\*\*.
- **LABELS** Suitable for damp locations.

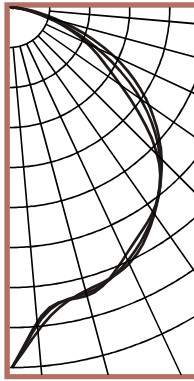
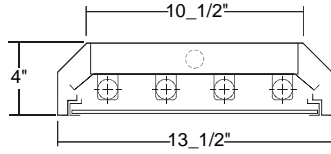
\*\* Lamp(s) by others.



**PHOTOMETRIC DATA**

**EBY150-4-4Lx-FR-CA-LED8x-UNV**

TEST NO.=LA-T2303  
 LAMP TYPE=LED T8 Internally Driven Light Tube\*  
 NO. OF LAMP=4  
 LUMENS PER LAMP=1700  
 WATTS PER LAMP=18.5  
 PHOTOMETRY TYPE=C  
 \* Test with major manufacturer's  
 LED T8 light tube(s), consult  
 L.A. Lighting for details.



**CANDLEPOWER**

ANGLE	END	45	CROSS
0	2512	2512	2512
5	2245	2199	2179
15	2039	2058	2076
25	1958	1933	1893
35	1937	1731	1722
45	1474	1454	1424
55	1152	1079	903
65	762	627	563
75	324	251	222
85	57	32	16
90	0	0	0
95	0	0	0
105	0	0	0
115	0	0	0
125	0	0	0
135	0	0	0
145	0	0	0
155	0	0	0
165	0	0	0
175	0	0	0
180	0	0	0

**ZONAL LUMEN SUMMARY**

DEGREES	LUMENS	% LAMP	% FIXTURE
0-30	1689	24.8	29.2
0-40	2775	40.8	47.9
0-60	4844	71.2	83.7
0-90	5789	85.1	100.0
90-120	0	0.0	0.0
90-150	0	0.0	0.0
90-180	0	0.0	0.0
0-180	5789	85.1	100.0

Lumen Output = 5789 lumens  
 Luminaire Efficiency = 85.1%

**SPACING CRITERION**

ALONG	ACROSS
1.10	1.06

This space is intentionally left blank.

This space is intentionally left blank.

This space is intentionally left blank.

