



BAYLIGHTER™

EBY151 SERIES

High Bay Luminaire



- High Bay Luminaire Up-Light
- Quarter Turn Rotary Locking Sockets
- 95% Enhanced Specular Aluminum Reflectors
- Frame & Lens Assembly With Safety Cables
- Removable Wiring Access Plate
- Stem, Cable or Chain Mountable
- Available with:
 - .040 Aluminum Fixture Housing
 - 90% White Aluminum Reflectors
 - Variety of Lenses
 - Emergency Battery Pack
 - Sensor
 - 11ga. Wire Guard
 - Die Cast Hub For 3/4" Pipe (4' Fixture Only)



Photometric Data and IES Files are Available on www.lalighting.com



LOS ANGELES LIGHTING MFG. CO.

10141 OLNEY ST. / EL MONTE, CA 91731

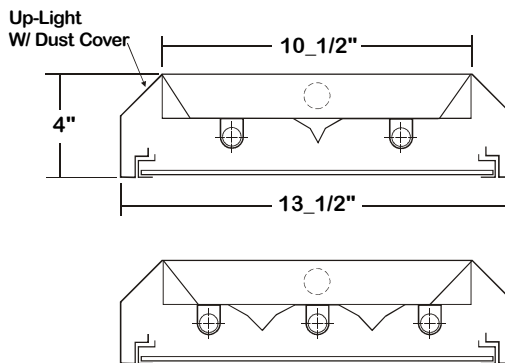
TEL : 626-454-8300 FAX : 626-454-8399

www.lalighting.com



EBY151 SERIES

CROSS SECTION



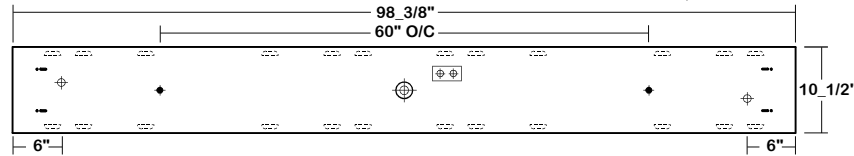
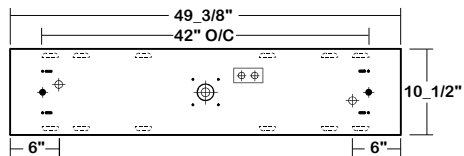
● ALUMINUM REFLECTOR SECURED WITH QUARTER TURN FASTENERS FOR EASE OF MAINTENANCE.

CATALOG NUMBER

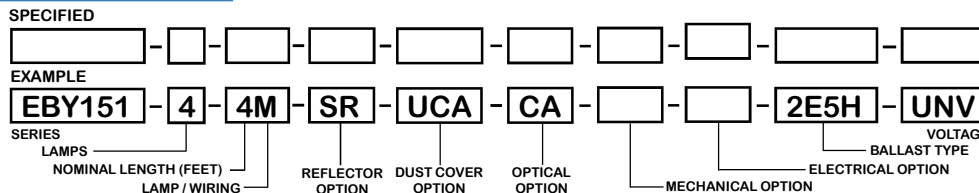
	NOMINAL LENGTH	TOTAL LAMPS		NOMINAL LENGTH	TOTAL LAMPS
EBY151-2-4M	4'	2	EBY151-2-4R	4'	2
EBY151-3-4M	4'	3	EBY151-3-4R	4'	3
EBY151-4-4M	4'	4	EBY151-4-4R	4'	4
EBY151-2-8MT	8'	4	EBY151-2-8RT	8'	4
EBY151-3-8MT	8'	6	EBY151-3-8RT	8'	6
EBY151-4-8MT	8'	8	EBY151-4-8RT	8'	8

BACK PLATE

• V-HOOK • 3/16" K.O. • 11/16" STEM MTG. K.O. ⊕ ⊕ ACCESS PLATE ⊕ 7/8" OFFSET K.O. ⊕ 2" K.O.



ORDERING GUIDE



NOTE: LAMP/WIRING*

M= Miniature Bi-Pin T5
 R = Medium Bi-Pin T8
 MT= Miniature Bi-Pin T5, Tandem Wiring
 RT = Medium Bi-Pin T8, Tandem Wiring

OPTIONS AND ACCESSORIES

REFLECTOR OPTIONS

Specular Aluminum Reflector (95%)
 White Aluminum Reflector (90%)

SUFFIX

SR
 WR

DUST COVER OPTIONS

Up-Light w/ Clear Acrylic Cover
 Up-Light w/ Clear Prismatic Acrylic Cover

SUFFIX

UCA
 UPA

OPTICAL OPTIONS

Clear Acrylic
 Clear Prismatic Acrylic
 Polycarbonate Lenses
 High Impact Acrylic
 * Other Lens Available Upon Request

SUFFIX

CA
 PA
 *
 *

MECHANICAL OPTIONS

Gasketing

SUFFIX

GSK*

ELECTRICAL OPTIONS

Emergency Battery Pack
 External Line Fusing (HLR/GLR)
 Radio Interference Filters
 Motion Sensor

SUFFIX

BP*
 ELF
 RIF
 MS

BALLAST OPTIONS

Electronic Ballasts T8
 Electronic T8 Step Dimming
 Electronic Ballast T5
 Electronic Ballast T5HO
 Electronic T5HO Step Dimming

SUFFIX

E8*
 E8SD
 E5
 E5H
 E5HSD

ACCESSORIES

Wire Guard - 11 Ga.
 Fixture Suspension System
 Ceiling Spacer
 6" Leg Height V-Hook
 Die Cast Hub For 3/4" Pipe (4' Fixture Only)

CAT.NO.

WG11-EBY151
 *
 *
 V6
 HUB

*See appropriate reference page

SPECIFICATIONS

TYPE

High bay luminaire for surface, pendant, or chain mounting. Must be spaced a minimum of 1 1/2" from ceiling when surface mounted. 22 gauge cold rolled steel housing with louvered vents on top for heat removal. Quarter turn rotary locking lampholders standard. (20 ga. C.R.S. and .040 aluminum housing available as specified)

CONSTRUCTION

Baked white polyester finish, minimum reflectance 86%. (Powder coated finish available.)

FINISH

Specular aluminum reflector standard, 95% reflectance. (White aluminum reflector available)

REFLECTOR

20 ga. cold rolled steel door frame. T-hinges and positive spring loaded latches. Safety cables attached.

DOOR FRAME

UP_LIGHT/DUST COVER

10% up-light opening with clear acrylic dust covers standard.

OPTICS

Clear acrylic lens standard. Extensive variety of lenses, diffusers and louvers available.

WIRE GUARDS

11 ga. powder coated.

WIRING

120v 60Hz., 277v 60Hz., UNV (universal voltage 120v thru 277v.) or as otherwise specified.

LABELS

Multiple levels of switching available as specified.

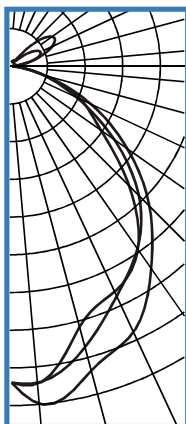
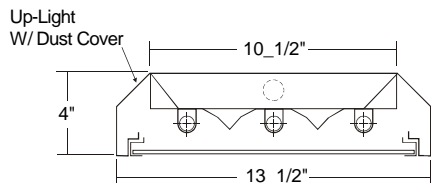
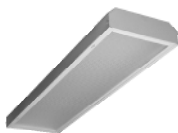
U.L. or ETL Listed.



PHOTOMETRIC DATA

EBY151-3-4M-SR-UCA-CA-E5H

TEST NO.=LA-T2294
 LAMP TYPE=F54T5HO
 NO. OF LAMP=3
 LUMENS PER LAMP=5000
 WATTS PER LAMP=54
 BALLAST FACTOR=1
 PHOTOMETRY TYPE=C



CANDLEPOWER

ANGLE	END	45	CROSS
0	4460	4460	4460
5	4781	4470	4483
15	4417	4072	3773
25	4107	3543	3485
35	3439	3108	3112
45	2743	2529	2325
55	1973	1740	1516
65	1208	985	1052
75	472	447	443
85	70	70	54
90	4	15	21
95	36	45	16
105	71	311	281
115	42	452	613
125	42	368	718
135	55	168	480
145	54	91	129
155	59	87	96
165	61	66	74
175	72	60	68
180	61	61	61

ZONAL LUMEN SUMMARY

DEGREES	LUMENS	% LAMP	% FIXTURE
0-30	3290	21.9	28.1
0-40	5295	35.3	45.2
0-60	8819	58.8	75.3
0-90	10405	69.4	88.9
90-120	680	4.5	5.8
90-150	1242	8.3	10.6
90-180	1305	8.7	11.1
0-180	11709	78.1	100.0

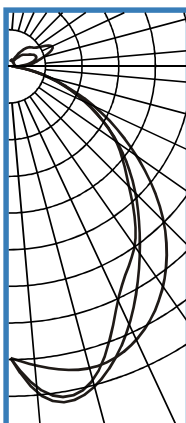
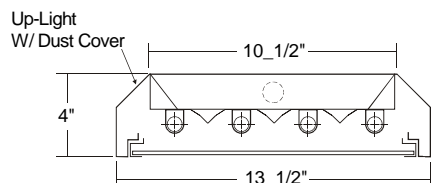
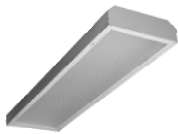
Lumen Output = 11709 lumens
 Luminaire Efficiency = 78.1%

SPACING CRITERION

ALONG	ACROSS
1.24	1105

EBY151-4-4M-SR-UCA-CA-E5H

TEST NO.=LA-T2295
 LAMP TYPE=F54T5HO
 NO. OF LAMP=4
 LUMENS PER LAMP=5000
 WATTS PER LAMP=54
 BALLAST FACTOR=1
 PHOTOMETRY TYPE=C



CANDLEPOWER

ANGLE	END	45	CROSS
0	5009	5009	5009
5	5158	5648	5555
15	5358	5664	5543
25	5155	4845	4385
35	4574	3867	3721
45	3699	3018	2865
55	2608	2207	2192
65	1538	1379	1381
75	607	611	639
85	103	93	78
90	12	100	146
95	50	233	312
105	77	435	554
115	71	454	795
125	68	350	572
135	75	275	467
145	86	162	324
155	81	107	151
165	111	107	113
175	98	107	105
180	83	83	83

ZONAL LUMEN SUMMARY

DEGREES	LUMENS	% LAMP	% FIXTURE
0-30	4323	21.6	28.3
0-40	6840	34.2	44.8
0-60	11347	56.7	74.4
0-90	13508	67.5	88.5
90-120	1031	5.2	6.8
90-150	1659	8.3	10.9
90-180	1751	8.8	11.5
0-180	15259	76.3	100.0

Lumen Output = 15259 lumens
 Luminaire Efficiency = 76.3%

SPACING CRITERION

ALONG	ACROSS
1.40	1.20

This space is intentionally left blank.

This space is intentionally left blank.

