



BAYLIGHTER™

EBY400 SERIES

High Bay Luminaire



- High Bay Luminaire
- Quarter Turn Rotary Locking Sockets
- Removable Wiring Access Plate
- Surface, Cable or Chain Mountable
- Suitable for Damp Locations
- Available with:
 - Fluorescent, LED and LED T8 (Internally Driven)
 - .040 Aluminum Fixture Housing
 - 95% Enhanced Specular Aluminum Reflectors
 - Emergency Battery Pack
 - Sensor
 - 11ga. Wire Guard



Photometric Data and IES Files are Available on www.lalighting.com



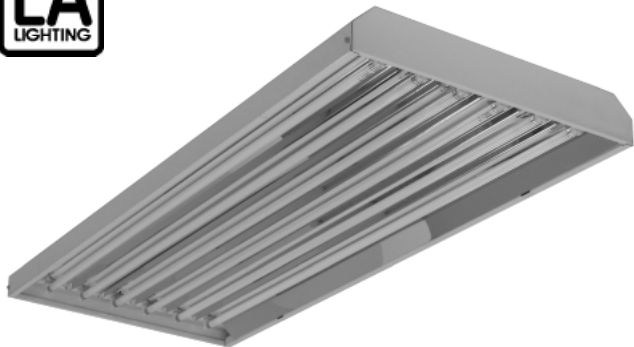
LOS ANGELES LIGHTING MFG. CO.

10141 OLNEY ST. / EL MONTE, CA 91731

TEL : 626-454-8300 FAX : 626-454-8399

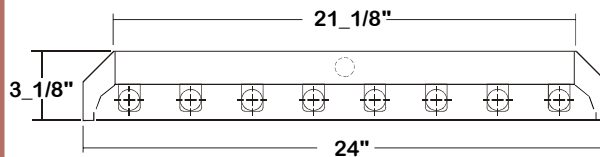
www.lalighting.com

BAYLIGHTER™ - LED T8 (Internally Driven)

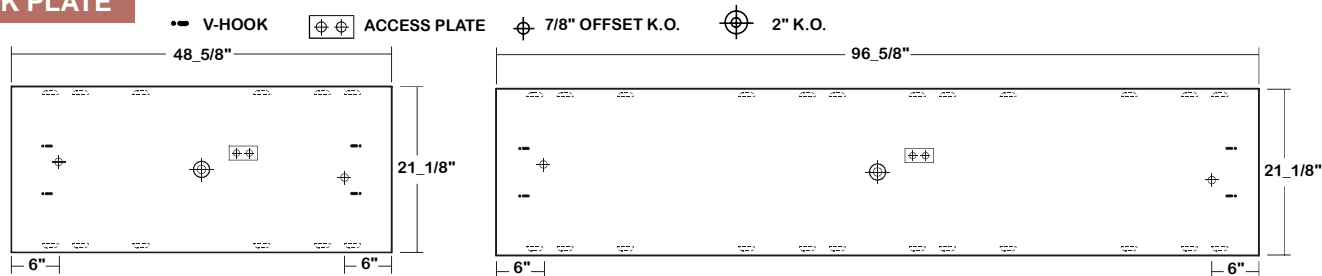


EBY400 SERIES - LED T8

CROSS SECTION



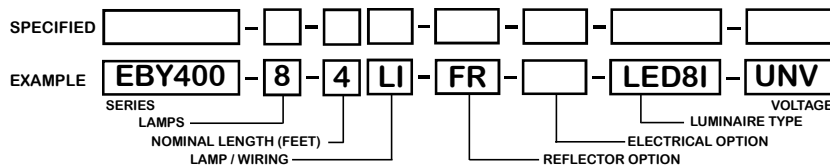
BACK PLATE



CATALOG NUMBER

	NOMINAL LENGTH	TOTAL MODULES
EBY400-6-4Lx	4'	6
EBY400-6-8LxT	8'	12
EBY400-7-4Lx	4'	7
EBY400-7-8LxT	8'	14
EBY400-8-4Lx	4'	8
EBY400-8-8LxT	8'	16

ORDERING GUIDE



TS2 - LED Luminaire On/Off Safety Switch



- Easily accessible on exterior of wire way.
- Allows individual fixture to be switched ON/OFF during re-lamping or Maintenance.
- Prevents damage to lamp and electrical shock during lamping and re-lamping.
- Allows safe entry to wire way channel where power connector can be disconnected for maintenance to fixture.

LAMP / WIRING

LI = LED T8 internal driver light tube.
Both ends powered.
Shunted sockets used.



LR = LED T8 internal driver light tube.
Single end powered.
Non-shunted sockets used.



OPTIONS AND ACCESSORIES

REFLECTOR OPTIONS

Flat Reflector, 24 ga. Cold Rolled Steel

SUFFIX

FR

ELECTRICAL OPTIONS

Motion Sensor

SUFFIX

MS

ACCESSORIES

- Wire Guard-11 Ga.
- Fixture Suspension System
- Ceiling Spacer
- 6" Leg Height V-Hook

CAT. NO.

- WG11-EBY400 *
- * *
- V6

*See appropriate reference page

SPECIFICATIONS

- TYPE
- CONSTRUCTION
- FINISH
- REFLECTOR
- WIRE GUARDS
- WIRING
- LABELS

High bay open light luminaire for surface, cable or chain mounting for LED T8 internal driver light tube (s)**.
22 gauge cold rolled steel housing with louvered vents on top for heat removal.
Quarter turn rotary locking lampholders standard. (20 ga. C.R.S. and .040 aluminum housing available as specified)
Baked white polyester finish, minimum reflectance 86%. (Powder coated finish available.)
24 ga. pre-paint cold rolled steel flat white reflector, minimum reflectance 86%.
11 ga. Chrome epoxy powder coated.
Operates LED T8 internal driver light tube(s)**.
Suitable for damp locations.

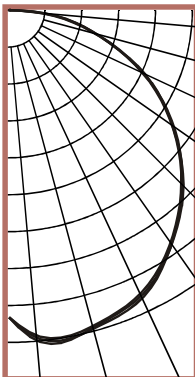
** Lamp(s) by others.



PHOTOMETRIC DATA

EBY400-6-4Lx-FR-LED8x-UNV

TEST NO.=LA-2271
LAMP TYPE=LED T8 Internally Driven Light Tube*
NO. OF LAMP=6
LUMENS PER LAMP=1700
WATTS PER LAMP=18.5
PHOTOMETRY TYPE=C
 * Test with major manufacturer's LED T8 light tube(s), consult L.A. Lighting for details.

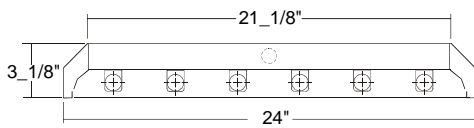


CANDLEPOWER			
ANGLE	END	45	CROSS
0	2879	2879	2879
5	3113	3087	3064
15	3074	3086	3060
25	2947	2971	2925
35	2664	2661	2645
45	2312	2297	2284
55	1865	1881	1860
65	1398	1384	1374
75	837	834	825
85	327	317	290
90	22	11	8
95	0	0	0
105	0	0	0
115	0	0	0
125	0	0	0
135	0	0	0
145	0	0	0
155	0	0	0
165	0	0	0
175	0	0	0
180	0	0	0

ZONAL LUMEN SUMMARY			
DEGREES	LUMENS	% LAMP	% FIXTURE
0-30	2533	24.8	24.9
0-40	4202	41.2	41.3
0-60	7662	75.1	75.3
0-90	10175	99.8	100.0
90-120	4	0.0	0.0
90-150	4	0.0	0.0
90-180	4	0.0	0.0
0-180	10179	99.8	100.0

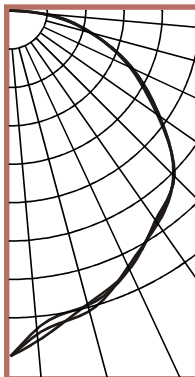
Lumen Output = 10179 lumens
 Luminaire Efficiency = 99.8%

SPACING CRITERION	
ALONG	ACROSS
1.41	1.40



EBY400-8-4Lx-FR-LED8x-UNV

TEST NO.=LA-T2272
LAMP TYPE=LED T8 Internally Driven Light Tube*
NO. OF LAMP=8
LUMENS PER LAMP=1700
WATTS PER LAMP=18.5
PHOTOMETRY TYPE=C
 * Test with major manufacturer's LED T8 light tube(s), consult L.A. Lighting for details.

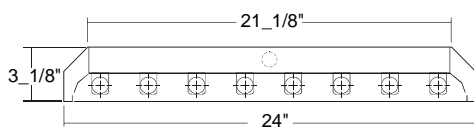


CANDLEPOWER			
ANGLE	END	45	CROSS
0	4714	4714	4714
5	4419	4342	4510
15	4231	4152	4130
25	3830	3867	3874
35	3524	3490	3469
45	3146	3158	3163
55	2480	2462	2430
65	1823	1824	1782
75	1126	1125	1109
85	466	425	388
90	41	22	19
95	0	0	0
105	0	0	0
115	0	0	0
125	0	0	0
135	0	0	0
145	0	0	0
155	0	0	0
165	0	0	0
175	0	0	0
180	0	0	0

ZONAL LUMEN SUMMARY			
DEGREES	LUMENS	% LAMP	% FIXTURE
0-30	3390	24.9	25.0
0-40	5584	41.1	41.1
0-60	10234	75.3	75.3
0-90	13576	99.8	99.9
90-120	7	0.1	0.1
90-150	7	0.1	0.1
90-180	7	0.1	0.1
0-180	13583	99.9	100.0

Lumen Output = 13583 lumens
 Luminaire Efficiency = 99.9%

SPACING CRITERION	
ALONG	ACROSS
1.17	1.17



This space is intentionally left blank.

This space is intentionally left blank.

