



BAYLIGHTER™

EBY401 SERIES

High Bay Luminaire



- High Bay Luminaire Up-Light
- Quarter Turn Rotary Locking Sockets
- 95% Enhanced Specular Aluminum Reflectors
- Removable Wiring Access Plate
- Surface, Cable or Chain Mountable
- Suitable for Damp Locations
- Available with:
 - .040 Aluminum Fixture Housing
 - 90% White Aluminum Reflectors
 - Emergency Battery Pack
 - Sensor
 - 11ga. Wire Guard



Photometric Data and IES Files are Available on www.lalighting.com



LOS ANGELES LIGHTING MFG. CO.

10141 OLNEY ST. / EL MONTE, CA 91731

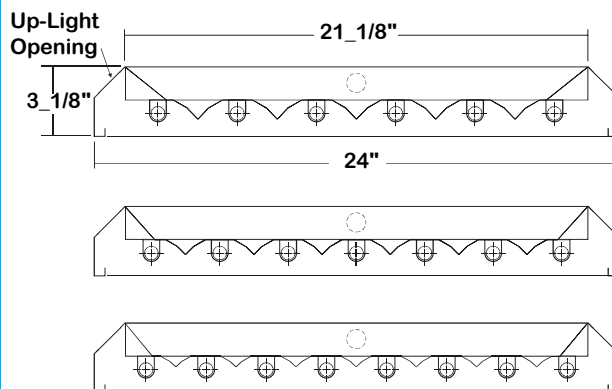
TEL : 626-454-8300 FAX : 626-454-8399

www.lalighting.com



EBY401 SERIES

CROSS SECTION



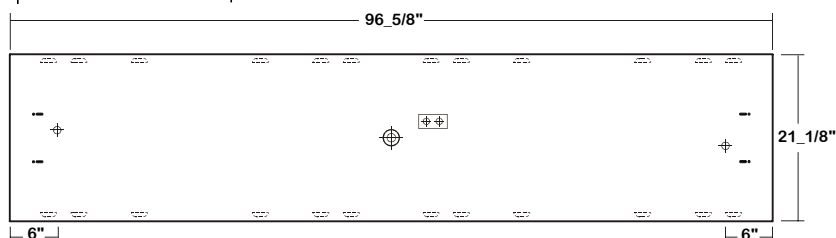
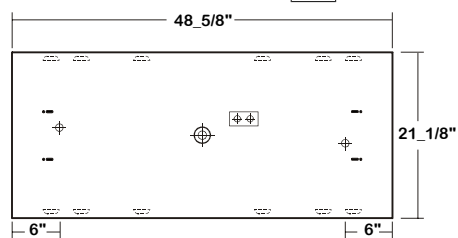
● ALUMINUM REFLECTOR SECURED WITH QUARTER TURN FASTENERS FOR EASE OF MAINTENANCE.

CATALOG NUMBER

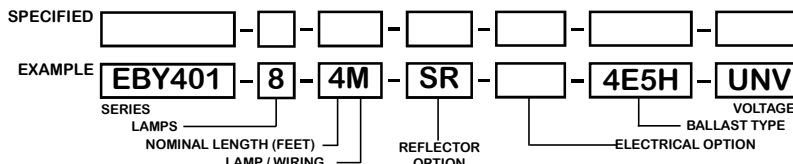
	NOMINAL LENGTH	TOTAL LAMPS		NOMINAL LENGTH	TOTAL LAMPS
EBY401-6-4M	4'	6	EBY401-6-4R	4'	6
EBY401-7-4M	4'	7	EBY401-7-4R	4'	7
EBY401-8-4M	4'	8	EBY401-8-4R	4'	8
EBY401-6-8MT	8'	12	EBY401-6-8RT	8'	12
EBY401-7-8MT	8'	14	EBY401-7-8RT	8'	14
EBY401-8-8MT	8'	16	EBY401-8-8RT	8'	16

BACK PLATE

- V-HOOK
- ACCESS PLATE
- 7/8" OFFSET K.O.
- 2" K.O.



ORDERING GUIDE



NOTE: LAMP/WIRING* M= Miniature Bi-Pin T5 R = Medium Bi-Pin T8 MT= Miniature Bi-Pin T5, Tandem Wiring RT = Medium Bi-Pin T8, Tandem Wiring

OPTIONS AND ACCESSORIES

- REFLECTOR OPTIONS
 - Specular Aluminum Reflector (95%)
 - White Aluminum Reflector (90%)

SUFFIX
SR
WR

- ELECTRICAL OPTIONS
 - Emergency Battery Pack
 - External Line Fusing (HLR/GLR)
 - Radio Interference Filters
 - Motion Sensor

SUFFIX
BP*
ELF
RIF
MS

- BALLAST OPTIONS
 - Electronic T5
 - Electronic T5HO
 - Electronic Step Dimming T5HO
 - Electronic T8
 - Electronic Step Dimming T8

SUFFIX
E5*
E5H
ESDM5H
E8*
ESDM8*

- ACCESSORIES
 - Wire Guard - 11 Ga.
 - Fixture Suspension System
 - Ceiling Spacer
 - 6" Leg Height V-Hook

CAT.NO.
WG11-EBY401
*
*
V6

*See appropriate reference page

SPECIFICATIONS

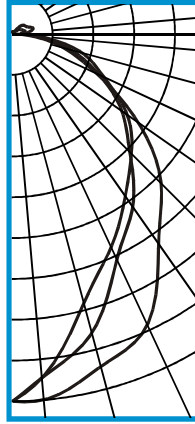
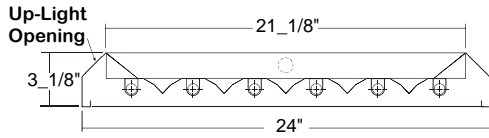
- TYPE: High bay open light luminaire for surface, cable or chain mounting. Must be spaced a minimum of 1 1/2" from ceiling when surface mounted.
- CONSTRUCTION: 22 gauge cold rolled steel housing with louvered vents on top for heat removal. Quarter turn rotary locking lampholders standard. (20 ga. C.R.S. and .040 aluminum housing available as specified) Baked white polyester finish, minimum reflectance 86%. (Powder coated finish available.) Specular aluminum reflector standard, 95% reflectance. (White aluminum reflector available)
- FINISH: 10% up-light opening standard.
- REFLECTOR: 11 ga. Chrome epoxy powder coated.
- UP_LIGHT: 120v 60Hz., 277v 60Hz., UNV (universal voltage 120v thru 277v.) or as otherwise specified.
- WIRE GUARDS: Multiple levels of switching available as specified.
- WIRING: U.L. Listed. Suitable for damp locations.
- LABELS:



PHOTOMETRIC DATA

EBY401-6-4M-SR-E5H

TEST NO.=LA-T1428
 LAMP TYPE=F54T5HO
 NO. OF LAMP=6
 LUMENS PER LAMP=5000
 WATTS PER LAMP=54
 BALLAST FACTOR=1
 PHOTOMETRY TYPE=C



CANDLEPOWER

ANGLE	END	45	CROSS
0	11690	11690	11690
5	11683	10966	10966
15	10938	9822	8827
25	10183	7876	7453
35	8105	6678	6263
45	6677	5272	5351
55	4854	4236	4440
65	2920	3026	3182
75	1658	1915	2270
85	475	769	869
90	40	258	440
95	52	318	462
105	52	395	678
115	33	313	532
125	48	248	469
135	61	113	359
145	65	52	82
155	72	74	63
165	50	82	79
175	70	87	69
180	105	105	105

ZONAL LUMEN SUMMARY

DEGREES	LUMENS	% LAMP	% FIXTURE
0-30	7724	25.7	28.0
0-40	12078	40.3	43.7
0-60	20432	68.1	74.0
0-90	26157	87.2	94.7
90-120	1001	3.3	3.6
90-150	1393	4.6	5.0
90-180	1454	4.8	5.3
0-180	27611	92.0	100.0

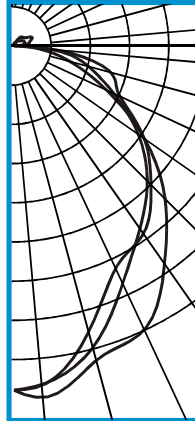
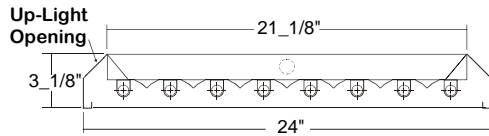
Lumen Output = 27611 lumens
 Luminaire Efficiency = 92.0%

SPACING CRITERION

ALONG	ACROSS
1.16	0.87

EBY401-8-4M-SR-E5H

TEST NO.=LA-T1432
 LAMP TYPE=F54T5HO
 NO. OF LAMP=8
 LUMENS PER LAMP=5000
 WATTS PER LAMP=54
 BALLAST FACTOR=1
 PHOTOMETRY TYPE=C



CANDLEPOWER

ANGLE	END	45	CROSS
0	13367	13367	13367
5	13701	13173	13203
15	12588	12048	11391
25	12096	10068	9446
35	10209	8564	8826
45	8287	7321	7518
55	6126	5859	6141
65	3879	4228	4502
75	2193	2955	3863
85	725	1375	1546
90	54	168	279
95	69	271	418
105	84	445	626
115	90	436	785
125	69	352	552
135	72	294	478
145	89	205	402
155	97	91	178
165	94	106	86
175	94	102	116
180	120	120	120

ZONAL LUMEN SUMMARY

DEGREES	LUMENS	% LAMP	% FIXTURE
0-30	9501	23.8	25.9
0-40	15180	38.0	41.3
0-60	26454	66.1	72.0
0-90	34868	87.2	94.9
90-120	1113	2.8	3.0
90-150	1772	4.4	4.8
90-180	1862	4.7	5.1
0-180	36731	91.8	100.0

Lumen Output = 36731 lumens
 Luminaire Efficiency = 91.8%

SPACING CRITERION

ALONG	ACROSS
1.23	0.99

This space is intentionally left blank.

This space is intentionally left blank.

