



BAYLIGHTER™

EBY451 SERIES



High Bay Luminaire



- High Bay Luminaire Up-Light
- Quarter Turn Rotary Locking Sockets
- 95% Enhanced Specular Aluminum Reflectors
- Frame & Lens Assembly With Safety Cables
- Removable Wiring Access Plate
- Surface, Cable or Chain Mountable
- Available with:
 - .040 Aluminum Fixture Housing
 - 90% White Aluminum Reflectors
 - Variety of Lenses
 - Emergency Battery Pack
 - Sensor
 - 11ga. Wire Guard



Photometric Data and IES Files are Available on www.lalighting.com



LOS ANGELES LIGHTING MFG. CO.

10141 OLNEY ST. / EL MONTE, CA 91731

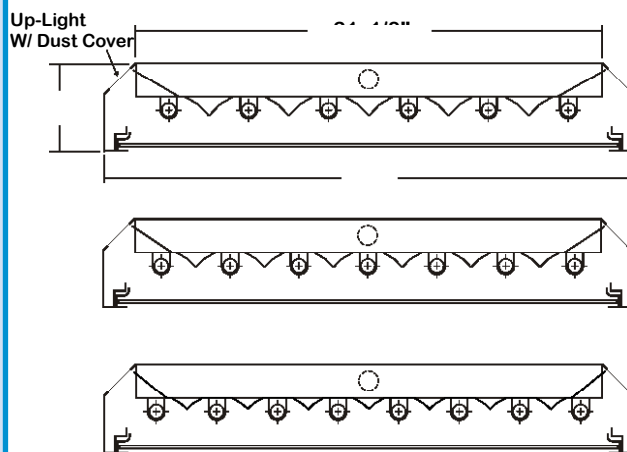
TEL : 626-454-8300 FAX : 626-454-8399

www.lalighting.com



EBY451 SERIES

CROSS SECTION



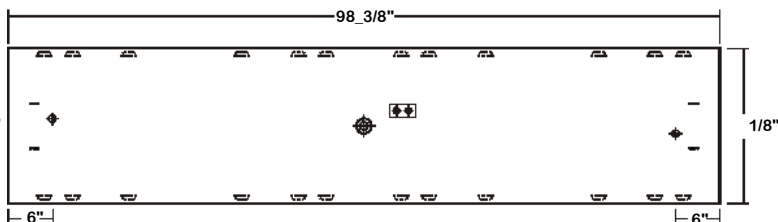
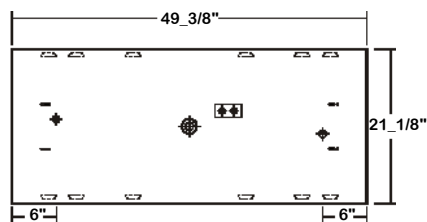
● ALUMINUM REFLECTOR SECURED WITH QUARTER TURN FASTENERS FOR EASE OF MAINTENANCE.

CATALOG NUMBER

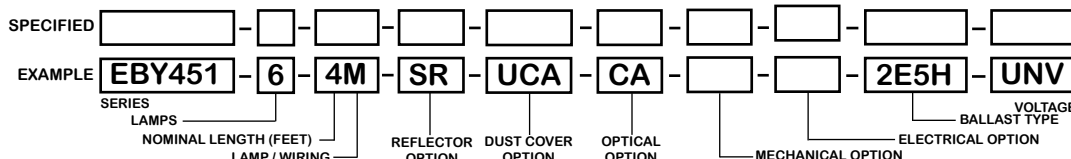
	NOMINAL LENGTH	TOTAL LAMPS		NOMINAL LENGTH	TOTAL LAMPS
EBY451-6-4M	4'	6	EBY451-6-4R	4'	6
EBY451-7-4M	4'	7	EBY451-7-4R	4'	7
EBY451-8-4M	4'	8	EBY451-8-4R	4'	8
EBY451-6-8MT	8'	12	EBY451-6-8RT	8'	12
EBY451-7-8MT	8'	14	EBY451-7-8RT	8'	14
EBY451-8-8MT	8'	16	EBY451-8-8RT	8'	16

BACK PLATE

- V-HOOK
- ⊕ ACCESS PLAT
- ⊕ 7/8" OFFSET K
- ⊕ 2" K.O.



ORDERING GUIDE



NOTE: LAMP/WIRING*

- M= Miniature Bi-Pin T5
- R = Medium Bi-Pin T8
- MT= Miniature Bi-Pin T5, Tandem Wiring
- RT = Medium Bi-Pin T8, Tandem Wiring

OPTIONS AND ACCESSORIES

<ul style="list-style-type: none"> ● REFLECTOR OPTIONS Specular Aluminum Reflector (95%) White Aluminum Reflector (90%) 	<p>SUFFIX</p> <p>SR</p> <p>WR</p>	<ul style="list-style-type: none"> ● MECHANICAL OPTIONS Gasketing 	<p>SUFFIX</p> <p>GSK*</p>	<ul style="list-style-type: none"> ● BALLAST OPTIONS Electronic Ballasts T8 Electronic T8 Step Dimming Electronic Ballast T5 Electronic Ballast T5HO Electronic T5HO Step Dimming 	<p>SUFFIX</p> <p>E8*</p> <p>E8SD</p> <p>E5</p> <p>E5H</p> <p>E5HSD</p>
<ul style="list-style-type: none"> ● DUST COVER OPTIONS Up-Light w/ Clear Acrylic Cover Up-Light w/ Clear Prismatic Acrylic Cover 	<p>SUFFIX</p> <p>UCA</p> <p>UPA</p>	<ul style="list-style-type: none"> ● ELECTRICAL OPTIONS Emergency Battery Pack External Line Fusing (HLR/GLR) Radio Interference Filters Motion Sensor 	<p>SUFFIX</p> <p>BP*</p> <p>ELF</p> <p>RIF</p> <p>MS</p>	<ul style="list-style-type: none"> ● ACCESSORIES Wire Guard - 11 Ga. Fixture Suspension System Ceiling Spacer 6" Leg Height V-Hook 	<p>CAT.NO.</p> <p>WG11-EBY451</p> <p>*</p> <p>*</p> <p>V6</p>

*See appropriate reference page

SPECIFICATIONS

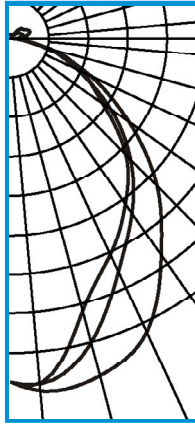
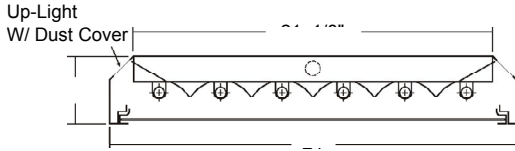
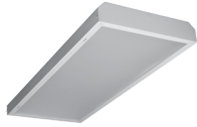
- TYPE: High bay luminaire for surface or chain mounting. Must be spaced a minimum of 1 1/2" from ceiling when surface mounted.
- CONSTRUCTION: 22 gauge cold rolled steel housing with louvered vents on top for heat removal. Quarter turn rotary locking lampholders standard. (20 ga. C.R.S. and .040 aluminum housing available as specified)
- FINISH: Baked white polyester finish, minimum reflectance 86%. (Powder coated finish available.)
- REFLECTOR: Specular aluminum reflector standard, 95% reflectance. (White aluminum reflector available)
- DOOR FRAME: 20 ga. cold rolled steel door frame. T-hinges and positive spring loaded latches. Safety cables attached.
- UP_LIGHT/DUST COVER: 10% up-light opening with clear acrylic dust covers standard.
- OPTICS: Clear acrylic lens standard. Extensive variety of lenses, diffusers and louvers available.
- WIRE GUARDS: 11 ga. powder coated.
- WIRING: 120v 60Hz., 277v 60Hz., UNV (universal voltage 120v thru 277v.) or as otherwise specified.
- LABELS: Multiple levels of switching available as specified. U.L. Listed. Suitable for damp locations.



PHOTOMETRIC DATA

EBY451-6-4M-SR-UCA-CA-E5H

TEST NO.=LA-T2298
 LAMP TYPE=F54T5HO
 NO. OF LAMP=6
 LUMENS PER LAMP=5000
 WATTS PER LAMP=54
 BALLAST FACTOR=1
 PHOTOMETRY TYPE=C



CANDLEPOWER

ANGLE	END	45	CROSS
0	10448	10448	10448
5	10753	10541	10517
15	10602	9540	8536
25	9823	7780	7212
35	7981	6438	6090
45	6280	5145	4943
55	4363	3689	3398
65	2647	2216	2425
75	1037	1130	1269
85	175	195	215
90	15	176	314
95	49	268	413
105	52	388	592
115	55	348	598
125	56	287	478
135	75	152	409
145	83	94	115
155	82	115	107
165	94	92	87
175	134	131	98
180	86	86	86

ZONAL LUMEN SUMMARY

DEGREES	LUMENS	% LAMP	% FIXTURE
0-30	7490	25.0	30.5
0-40	11722	39.1	47.7
0-60	19282	64.3	78.5
0-90	23054	76.8	93.9
90-120	961	3.2	3.9
90-150	1422	4.7	5.8
90-180	1509	5.0	6.1
0-180	24563	81.9	100.0

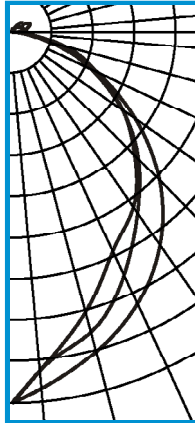
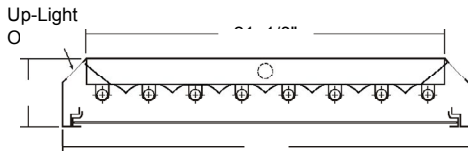
Lumen Output = 24563 lumens
 Luminaire Efficiency = 81.9%

SPACING CRITERION

ALONG	ACROSS
1.24	0.95

EBY451-8-4M-SR-UCA-CA-E5H

TEST NO.=LA-T2299
 LAMP TYPE=F54T5HO
 NO. OF LAMP=8
 LUMENS PER LAMP=5000
 WATTS PER LAMP=54
 BALLAST FACTOR=1
 PHOTOMETRY TYPE=C



CANDLEPOWER

ANGLE	END	45	CROSS
0	14308	14308	14308
5	13789	13076	13070
15	12737	11960	11124
25	11515	10261	9251
35	9944	8430	8174
45	7995	6858	6648
55	5716	5115	5155
65	3478	3278	3521
75	1412	1649	2068
85	256	326	334
90	9	99	182
95	47	257	428
105	71	413	603
115	71	442	768
125	66	354	549
135	91	281	514
145	87	171	294
155	103	117	159
165	111	90	134
175	82	115	118
180	72	72	72

ZONAL LUMEN SUMMARY

DEGREES	LUMENS	% LAMP	% FIXTURE
0-30	9435	23.6	29.1
0-40	14928	37.3	46.1
0-60	25152	62.9	77.7
0-90	30588	76.5	94.5
90-120	1053	2.6	3.3
90-150	1689	4.2	5.2
90-180	1787	4.5	5.5
0-180	32375	80.9	100.0

Lumen Output = 32375 lumens
 Luminaire Efficiency = 80.9%

SPACING CRITERION

ALONG	ACROSS
1.12	0.89

This space is intentionally left blank.

This space is intentionally left blank.

