



# BAYLIGHTER™

## FBL229 SERIES

### Medium / High Bay Luminaire



- Medium / High Bay Compact Fluorescent Luminaire
- High Impact / Vandal Resistant
- Trim Flanged
- 40W, 50W, 55W Biax® Lamp
- Full Length Piano Hinge & Captive Screws
- Up To 6 Levels Switching
- Suitable for Damp Locations
- Available with:
  - 95% Enhanced Specular Aluminum Reflectors
  - Variety of Lenses
  - Emergency Battery Pack



Photometric Data and IES Files are Available on [www.lalighting.com](http://www.lalighting.com)



**LOS ANGELES LIGHTING MFG. CO.**

10141 OLNEY ST. / EL MONTE, CA 91731

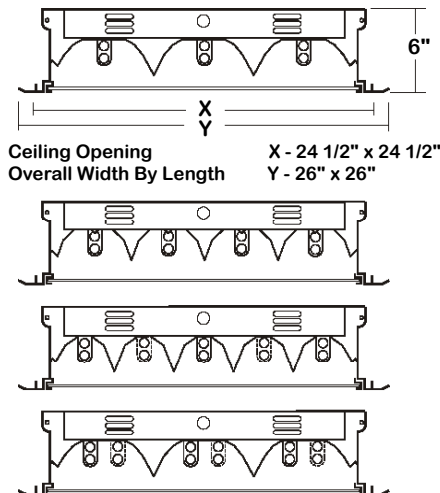
TEL : 626-454-8300 FAX : 626-454-8399

[www.lalighting.com](http://www.lalighting.com)



## FBL229 SERIES

### CROSS SECTION

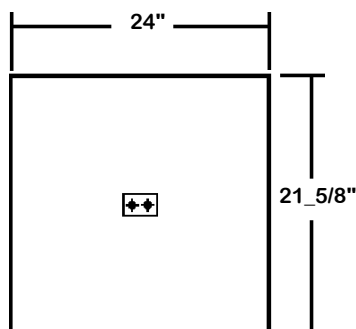


### CATALOG NUMBER

CATALOG NUMBER	NOMINAL WIDTH X LENGTH	TOTAL LAMPS
FBL229-3-2B	2' X 2'	3
FBL229-4-2B	2' X 2'	4
FBL229-5-2B	2' X 2'	5
FBL229-6-2B	2' X 2'	6

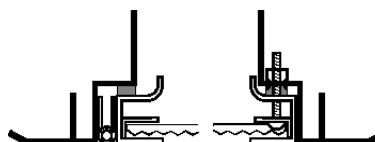
### BACK PLATE

ACCESS PLATE



### DOOR FRAME INFORMATION

#### CROSS SECTION



#### EXPLANATION

1. Continuous Piano Hinge.
2. Two Captive Screws.
3. Welded Inner Frame Lens Retainer Rail.

FS W

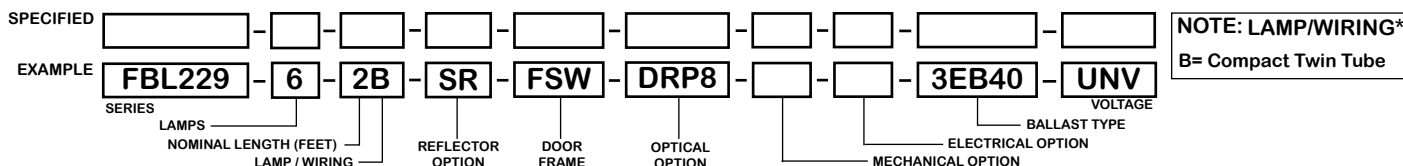
#### FINISHES

W - White Enamel  
B - Black Enamel

#### STYLES

FS - Flat Steel

### ORDERING GUIDE



### OPTIONS AND ACCESSORIES

#### REFLECTOR OPTIONS

Specular Aluminum Reflector (95%)  
White Aluminum Reflector (90%)

#### SUFFIX

SR  
WR

#### OPTICAL OPTIONS

Clear Polycarbonate .125  
Clear Prismatic Polycarbonate .125  
High Impact Clear Prismatic Acrylic .125  
High Impact Clear Prismatic Acrylic .187  
\* Other Lens Available Upon Request

#### SUFFIX

CPC2  
PPC2  
DRP2  
DRP8

#### MECHANICAL OPTIONS

Tamper Proof Screws (Hex Socket With Post)  
Flat Trim Flange Without Bevel Edges

#### SUFFIX

TP  
FFLG

#### ELECTRICAL OPTIONS

Emergency Battery Pack  
External Line Fusing (HLR/GLR)  
Radio Interference Filters

#### SUFFIX

BP\*  
ELF  
RIF

#### BALLAST OPTIONS

Electronic 40W Compact Twin Tube  
Electronic 50W Compact Twin Tube  
Electronic 55W Compact Twin Tube

#### SUFFIX

EB40  
EB50  
EB55

#### ACCESSORIES

Hanger Yokes  
Swing Out Jack

#### CAT. NO.

HS-24\_1/2  
SOJ

\*See appropriate reference page

### SPECIFICATIONS

#### TYPE

Recessed mounted, flanged low bay / high bay general area luminaire. For use in high impact / vandal resistant applications. To be mounted in open plenum only. Not to be installed in tightly enclosed spaces.

#### CONSTRUCTION

22 gauge cold rolled steel housing with louvered vents on each side for heat removal. (20 GA. housing available as specified.)

#### FINISH

Baked white polyester finish, minimum reflectance 86%. (Powder coated finish available.)

#### REFLECTOR

Enhanced aluminum reflectors, 95% reflectance.

#### DOOR FRAME

20 gauge cold rolled steel, continuous piano hinge and 2 captive screws, inner frame lens retainer rail.

#### OPTICS

Available with various high impact acrylic or polycarbonate lenses.

#### WIRING

120v 60Hz., 277v 60Hz., UNV (universal voltage 120v thru 277v.) or as otherwise specified.

#### LABELS

Up to 6 levels of switching available as specified.

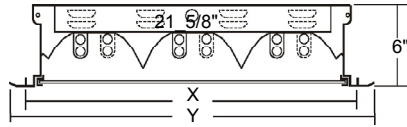
U.L. Listed. Compatible with UL Fire-Rated Ceiling Assemblies. Suitable for damp locations.



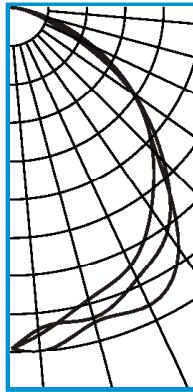
**PHOTOMETRIC DATA**

**FBL229-6-2B-SR-FSW-CA-EB40**

TEST NO.=LA-T0305-1  
 LAMP TYPE=F40BX  
 NO. OF LAMP=6  
 LUMENS PER LAMP=3150  
 WATTS PER LAMP=40  
 BALLAST FACTOR=1  
 PHOTOMETRY TYPE=C



Ceiling Opening X - 24 1/2" x 24 1/2"  
 Overall Width By Length Y - 26" x 26"



**CANDLEPOWER**

ANGLE	END	45	CROSS
0	5384	5384	5384
5	5175	5084	5448
15	4757	5065	5131
25	4471	4706	5176
35	3837	4284	4580
45	3126	3367	3207
55	2339	2320	2302
65	1386	1238	1029
75	547	398	346
85	66	66	63
90	2	12	11
95	3	11	11
105	1	6	9
115	1	6	8
125	0	3	6
135	0	1	3
145	0	0	1
155	0	0	0
165	0	0	0
175	0	0	0
180	0	0	0

**ZONAL LUMEN SUMMARY**

DEGREES	LUMENS	% LAMP	% FIXTURE
0-30	4121	21.8	31.4
0-40	6789	35.9	51.7
0-60	11400	60.3	86.8
0-90	13116	69.4	99.8
90-120	21	0.1	0.2
90-150	25	0.1	0.2
90-180	25	0.1	0.2
0-180	13141	69.5	100.0

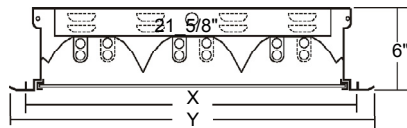
Lumen Output = 13141 lumens  
 Luminaire Efficiency = 69.5%

**SPACING CRITERION**

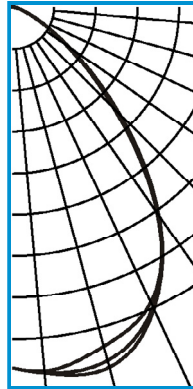
ALONG	ACROSS
1.15	1.33

**FBL229-6-2B-SR-FSW-PA-EB40**

TEST NO.=LA-T0306-1  
 LAMP TYPE=F40BX  
 NO. OF LAMP=6  
 LUMENS PER LAMP=3150  
 WATTS PER LAMP=40  
 BALLAST FACTOR=1  
 PHOTOMETRY TYPE=C



Ceiling Opening X - 24 1/2" x 24 1/2"  
 Overall Width By Length Y - 26" x 26"



**CANDLEPOWER**

ANGLE	END	45	CROSS
0	6195	6195	6195
5	6272	6299	6305
15	6021	6282	6403
25	5594	5683	5720
35	4358	4358	4310
45	2595	2476	2464
55	1180	1149	1126
65	429	401	418
75	118	119	131
85	16	29	47
90	1	12	11
95	0	4	11
105	2	5	7
115	1	6	11
125	0	4	10
135	0	3	7
145	0	1	2
155	0	0	1
165	1	0	0
175	0	0	0
180	0	0	0

**ZONAL LUMEN SUMMARY**

DEGREES	LUMENS	% LAMP	% FIXTURE
0-30	4995	26.4	44.3
0-40	7726	40.9	68.5
0-60	10696	56.6	94.8
0-90	11261	59.6	99.8
90-120	17	0.1	0.2
90-150	24	0.1	0.2
90-180	25	0.1	0.2
0-180	11286	59.7	100.0

Lumen Output = 11286 lumens  
 Luminaire Efficiency = 59.7%

**SPACING CRITERION**

ALONG	ACROSS
1.19	1.19

This space is intentionally left blank.

This space is intentionally left blank.

