



RECESSED

FDH410 SERIES



6" Depth / Trim Flange Recessed



- 6" Depth / Trim Flange Recessed Mounted Luminaire
- 22 Gauge Cold Rolled Steel Housing
- One Piece Welded Trim Flange Painted After Fabrication
- 2" Deep Regressed Extruded Aluminum Door Frame
- T-Hinge And Spring Loaded Latch
- One Way Polyurethane Gasketed
- Suitable for Damp Locations
- Available with:
 - Fluorescent, LED and LED T8 (Internally Driven)
 - Variety of Lens Options
 - Emergency Battery Pack



Photometric Data and IES Files are Available on www.lalighting.com



LOS ANGELES LIGHTING MFG. CO.

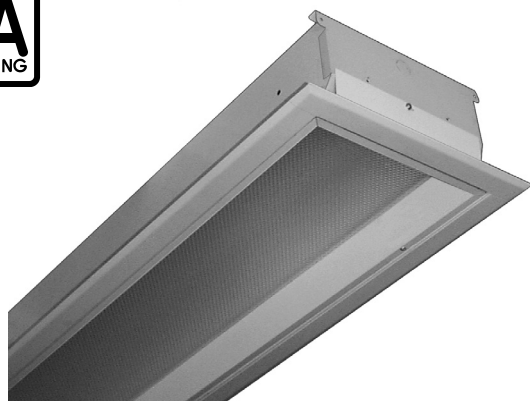
10141 OLNEY ST. / EL MONTE, CA 91731

TEL : 626-454-8300 FAX : 626-454-8399

www.lalighting.com

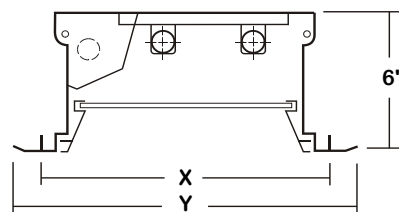
RECESSED - Fluorescent

LED Equivalent Products Available on www.lalighting.com



FDH410 SERIES

CROSS SECTION



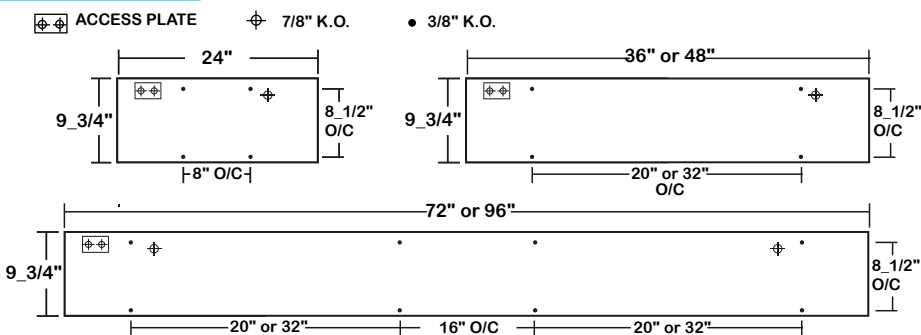
Ceiling Opening

- 1X2 X - 12 1/2" x 24 1/2"
- 1X3 X - 12 1/2" x 36 1/2"
- 1X4 X - 12 1/2" x 48 1/2"

Overall Width By Length

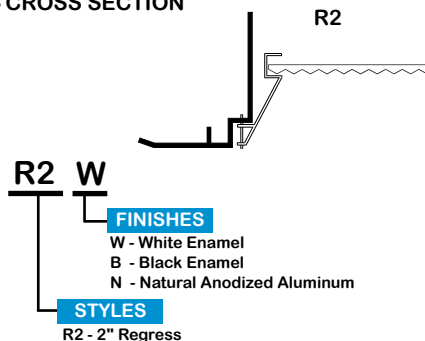
- 1X2 Y - 14" x 26"
- 1X3 Y - 14" x 38"
- 1X4 Y - 14" x 50"

BACK PLATE



DOOR FRAME INFORMATION

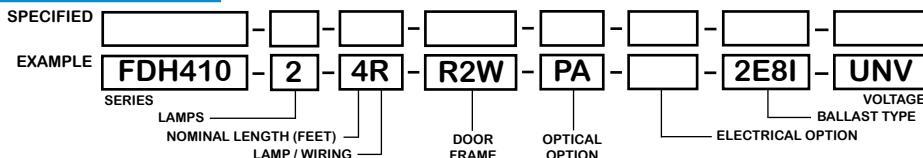
CROSS SECTION



CATALOG NUMBER

	NOMINAL LENGTH	TOTAL LAMPS		NOMINAL LENGTH	TOTAL LAMPS		NOMINAL LENGTH	TOTAL LAMPS		NOMINAL LENGTH	TOTAL LAMPS
FDH410-1-2M	2'	1	FDH410-2-6MT	6'	4	FDH410-1-2R	2'	1	FDH410-2-6RT	6'	4
FDH410-1-3M	3'	1	FDH410-2-8MT	8'	4	FDH410-1-3R	3'	1	FDH410-2-8RT	8'	4
FDH410-1-4M	4'	1	FDH410-3-2M	2'	3	FDH410-1-4R	4'	1	FDH410-3-2R	2'	3
FDH410-1-6MT	6'	2	FDH410-3-3M	3'	3	FDH410-1-6RT	6'	2	FDH410-3-3R	3'	3
FDH410-1-8MT	8'	2	FDH410-3-4M	4'	3	FDH410-1-8RT	8'	2	FDH410-3-4R	4'	3
FDH410-2-2M	2'	2	FDH410-3-6MT	6'	6	FDH410-2-2R	2'	2	FDH410-3-6RT	6'	6
FDH410-2-3M	3'	2	FDH410-3-8MT	8'	6	FDH410-2-3R	3'	2	FDH410-3-8RT	8'	6
FDH410-2-4M	4'	2				FDH410-2-4R	4'	2			

ORDERING GUIDE



NOTE: LAMP/WIRING*
 M = Miniature Bi-Pin T5
 R = Medium Bi-Pin T8
 MT = Miniature Bi-Pin T5, Tandem Wiring
 RT = Medium Bi-Pin T8, Tandem Wiring

OPTIONS AND ACCESSORIES

OPTICAL OPTIONS

- Clear Acrylic
- Clear Prismatic Acrylic
- Flat White Acrylic
- Polycarbonate Lenses
- High Impact Acrylic
- Note: Other lens available upon request

- SUFFIX**
- CA
 - PA
 - FWA
 - *
 - *

ELECTRICAL OPTIONS

- Emergency Battery Pack
- External Line Fusing (HLR/GLR)
- Radio Interference Filters
- Night Light

- SUFFIX**
- BP*
 - ELF
 - RIF
 - NL*

BALLAST OPTIONS

- Electronic T5
- Electronic T5HO
- Electronic Step Dimming T5HO
- Electronic T8
- Electronic Step Dimming T8

- SUFFIX**
- E5*
 - E5H
 - ESDM5H
 - E8*
 - ESDM8*

ACCESSORIES

- Hanger Yokes
- Swing Out Jack

- CAT. NO.**
- HS-12 1/2
 - SOJ

*See appropriate reference page

SPECIFICATIONS

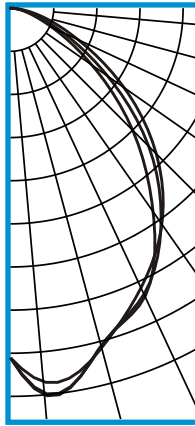
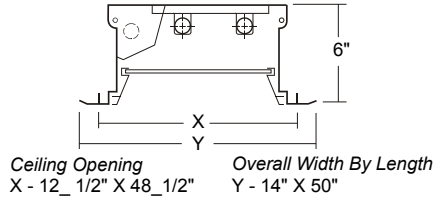
- TYPE** Recessed mounted flanged luminaire available in various lengths and widths.
- CONSTRUCTION** 22 ga. cold rolled steel housing. (20 ga. housing available as specified)
- FINISH** Baked white polyester finish, minimum reflectance 86%. (Powder coated finish available.)
- DOOR FRAME** Heavy wall 2" deep aluminum extrusion. T-hinge, positive spring loaded latch. Two gussets installed in each corner for maximum strength and true miter alignment.
- OPTICS** Clear prismatic acrylic standard. Extensive variety of lenses, diffusers and louvers available.
- WIRING** 120v 60Hz., 277v 60Hz., UNV (universal voltage 120v thru 277v.) or as otherwise specified.
- LABELS** U.L. Listed. Suitable for damp locations. Compatible with UL Fire-Rated Ceiling Assemblies.



PHOTOMETRIC DATA

FDH410-2-4R-R2W-PA-E8

TEST NO.=LA-T0571-1
 LAMP TYPE=FO32T8
 NO. OF LAMP=2
 LUMENS PER LAMP=2900
 WATTS PER LAMP=32
 BALLAST FACTOR=1
 PHOTOMETRY TYPE=C



CANDLEPOWER

ANGLE	END	45	CROSS
0	1328	1328	1328
5	1423	1467	1474
15	1335	1330	1327
25	1172	1199	1208
35	1002	997	944
45	783	742	657
55	527	452	379
65	283	220	177
75	126	90	69
85	27	20	19
90	0	1	1
95	0	0	0
105	0	0	0
115	0	0	0
125	0	0	0
135	0	0	0
145	0	0	0
155	0	0	0
165	0	0	0
175	0	0	0
180	0	0	0

ZONAL LUMEN SUMMARY

DEGREES	LUMENS	% LAMP	% FIXTURE
0-30	1068	18.4	35.6
0-40	1687	29.1	56.2
0-60	2660	45.9	88.6
0-90	3000	51.7	100.0
90-120	0	0.0	0.0
90-150	0	0.0	0.0
90-180	0	0.0	0.0
0-180	3000	51.7	100.0

Lumen Output = 3000 lumens
 Luminaire Efficiency = 51.75%

SPACING CRITERION

ALONG	ACROSS
1.21	1.19

This space is intentionally left blank.

This space is intentionally left blank.

This space is intentionally left blank.

