

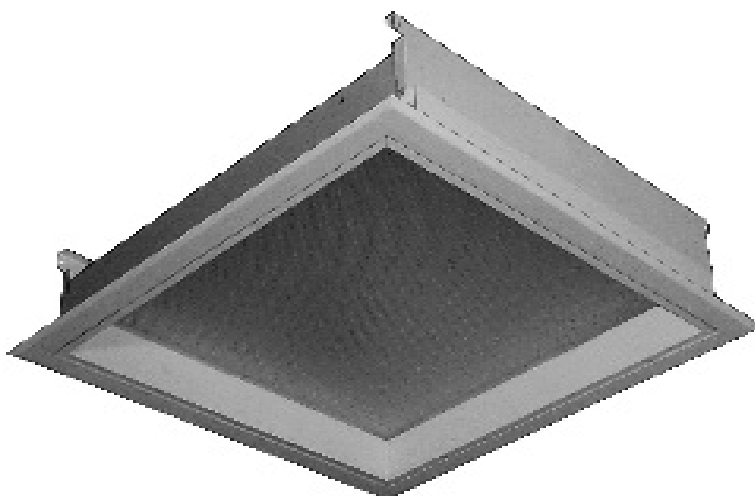


RECESSED

FDH420 SERIES



6" Depth / Trim Flange Recessed



- 2X2, 6" Depth / Trim Flange Recessed Mounted Luminaire
- 22 Gauge Cold Rolled Steel Housing
- One Piece Welded Trim Flange Painted After Fabrication
- 2" Deep Regressed Extruded Aluminum Door Frame
- T-Hinge And Spring Loaded Latch
- One Way Polyurethane Gasketed
- Suitable for Damp Locations
- Available with:
 - Fluorescent, LED and LED T8 (Internally Driven)
 - Variety of Lens Options
 - Emergency Battery Pack



Photometric Data and IES Files are Available on www.lalighting.com



LOS ANGELES LIGHTING MFG. CO.

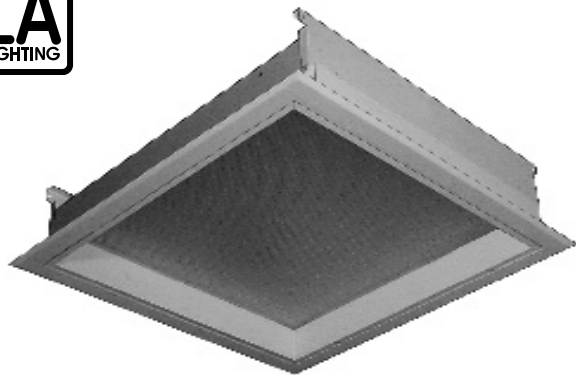
10141 OLNEY ST. / EL MONTE, CA 91731

TEL : 626-454-8300 FAX : 626-454-8399

www.lalighting.com

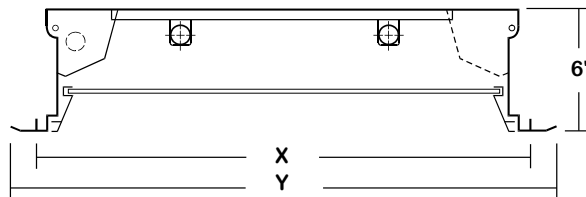
RECESSED - Fluorescent

LED Equivalent Products Available on www.lalighting.com



**FDH420 SERIES
2x2**

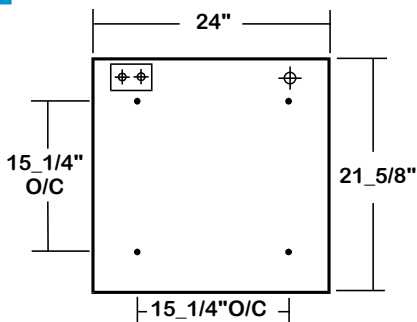
CROSS SECTION



Ceiling Opening X - 24_1/2" x 24_1/2"
Overall Width By Length Y - 26" x 26"

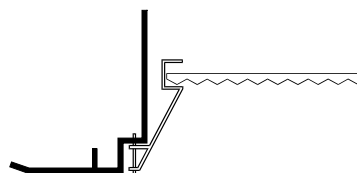
BACK PLATE

- 3/8" K.O.
- ☒ ACCESS PLATE
- ⊕ 7/8" K.O.



DOOR FRAME INFORMATION

● **CROSS SECTION**



R2 W

FINISHES

- W - White Enamel
- B - Black Enamel
- N - Natural Anodized Aluminum

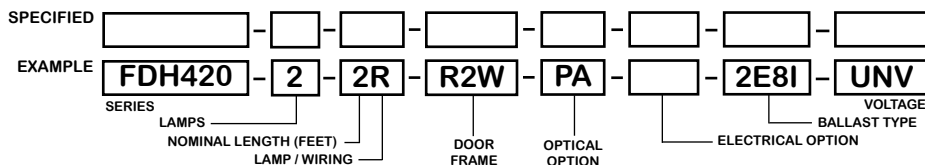
STYLES

- R2 - 2" Regress

CATALOG NUMBER

	NOMINAL WIDTH X LENGTH	TOTAL LAMPS		NOMINAL WIDTH X LENGTH	TOTAL LAMPS		NOMINAL WIDTH X LENGTH	TOTAL LAMPS
FDH420-1-2M	2' X 2'	1	FDH420-2-2RU1	2' X 2'	2	FDH420-1-2R	2' X 2'	1
FDH420-2-2M	2' X 2'	2	FDH420-3-2RU1	2' X 2'	3	FDH420-2-2R	2' X 2'	2
FDH420-3-2M	2' X 2'	3	FDH420-2-2RU6	2' X 2'	2	FDH420-3-2R	2' X 2'	3
FDH420-4-2M	2' X 2'	4				FDH420-4-2R	2' X 2'	4

ORDERING GUIDE



NOTE: LAMP/WIRING*

- M = Miniature Bi-Pin T5
- R = Medium Bi-Pin T8
- RU1 = Medium Bi-Pin T8 U Shaped 1_5/8" Spacing
- RU6 = Medium Bi-Pin T8 U Shaped 6" Spacing

OPTIONS AND ACCESSORIES

● **OPTICAL OPTIONS**

- Clear Acrylic
- Clear Prismatic Acrylic
- Flat White Acrylic
- Polycarbonate Lenses
- High Impact Acrylic
- Note: Other lens available upon request

SUFFIX

- CA
- PA
- FWA
- *
- *

● **ELECTRICAL OPTIONS**

- Emergency Battery Pack
- External Line Fusing (HLR/GLR)
- Radio Interference Filters
- Night Light

SUFFIX

- BP*
- ELF
- RIF
- NL*

● **BALLAST OPTIONS**

- Electronic T5
- Electronic T5HO
- Electronic Step Dimming T5HO
- Electronic T8
- Electronic Step Dimming T8

SUFFIX

- E5*
- E5H
- ESDM5H
- E8*
- ESDM8*

● **ACCESSORIES**

- Hanger Yokes
- Swing Out Jack

CAT. NO.

- HS-24 1/2
- SOJ

*See appropriate reference page

SPECIFICATIONS

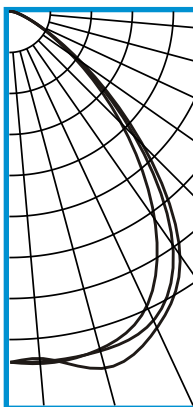
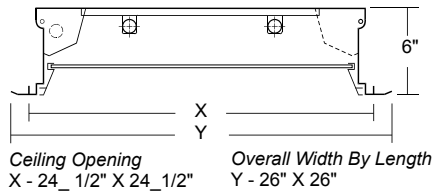
- **TYPE** Recessed mounted flanged luminaire available in various lengths and widths.
- **CONSTRUCTION** 22 ga. cold rolled steel housing. (20 ga. housing available as specified)
- **FINISH** Baked white polyester finish, minimum reflectance 86%. (Powder coated finish available.)
- **DOOR FRAME** Heavy wall 2" deep aluminum extrusion. T-hinge, positive spring loaded latch. Two gussets installed in each corner for maximum strength and true miter alignment.
- **OPTICS** Clear prismatic acrylic standard. Extensive variety of lenses, diffusers and louvers available.
- **WIRING** 120v 60Hz., 277v 60Hz., UNV (universal voltage 120v thru 277v.) or as otherwise specified.
- **LABELS** U.L. Listed. Suitable for damp locations. Compatible with UL Fire-Rated Ceiling Assemblies.



PHOTOMETRIC DATA

FDH420-2-2R-R2W-PA-E8

TEST NO.=LA-T0572-1
 LAMP TYPE=FO17T8
 NO. OF LAMP=2
 LUMENS PER LAMP=1350
 WATTS PER LAMP=17
 BALLAST FACTOR=1
 PHOTOMETRY TYPE=C



CANDLEPOWER

ANGLE	END	45	CROSS
0	838	838	838
5	845	840	832
15	834	839	882
25	774	813	832
35	600	676	707
45	371	418	444
55	175	186	198
65	64	67	68
75	20	21	22
85	5	6	7
90	0	0	0
95	0	0	0
105	0	0	0
115	0	0	0
125	0	0	0
135	0	0	0
145	0	0	0
155	0	0	0
165	0	0	0
175	0	0	0
180	0	0	0

ZONAL LUMEN SUMMARY

DEGREES	LUMENS	% LAMP	% FIXTURE
0-30	695	25.7	41.1
0-40	1112	41.2	65.7
0-60	1599	59.2	94.5
0-90	1692	62.7	100.0
90-120	0	0.0	0.0
90-150	0	0.0	0.0
90-180	0	0.0	0.0
0-180	1692	62.7	100.0

Lumen Output = 1692 lumens
 Luminaire Efficiency = 62.7%

SPACING CRITERION

ALONG	ACROSS
1.20	1.32

This space is intentionally left blank.

This space is intentionally left blank.

This space is intentionally left blank.

