



SPECIAL PURPOSE

FHB100 SERIES Handball & Racquetball



- For Handball and Racquetball Court
- Flat Trim Flange
- Full Length Piano Hinge and Captive Screws
- Internal Frame Rail
- Inverted Nominal .187 High Impact "DR" Formulated Acrylic
- Suitable for Damp Locations

Fluorescent, LED and LED T8 (Internally Driven)

Variety of Lens

Tamper Proof Screws

Emergency Battery Pack



Photometric Data and IES Files are Available on www.lalighting.com



LOS ANGELES LIGHTING MFG. CO.

10141 OLNEY ST. / EL MONTE, CA 91731

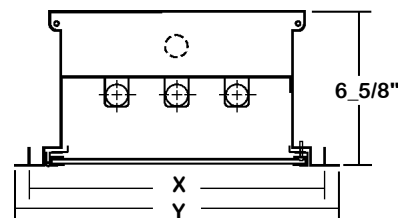
TEL : 626-454-8300 FAX : 626-454-8399

www.lalighting.com



FHB100 SERIES

CROSS SECTION

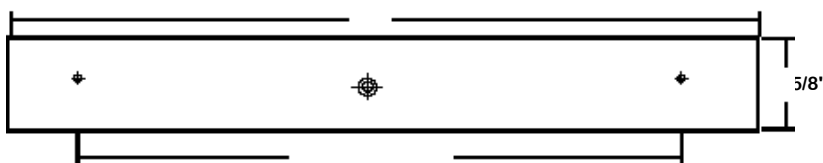
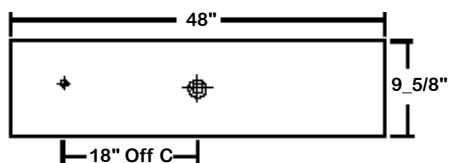


Ceiling Opening
X - 12 5/8" x 48 1/2"
12 5/8" x 96 1/2"

Overall Width By Length
Y - 14" x 50"
14" x 98"

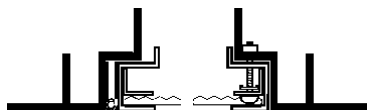
BACK PLATE

7/8" OFFSET K.O. 2" K.O.



DOOR FRAME INFORMATION

CROSS SECTION



EXPLANATION

1. Full Length Piano Hinge.
2. Inner Frame Lens Retainer Rail.
3. Sealed With Neoprene Gasket.
4. Inverted Lens.

FINISHES

W - White Enamel
B - Black Enamel
N - Natural Anodized Aluminum

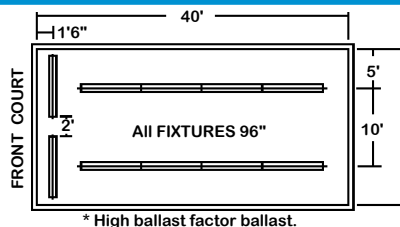
STYLES

FS - Flat Steel

CATALOG NUMBER

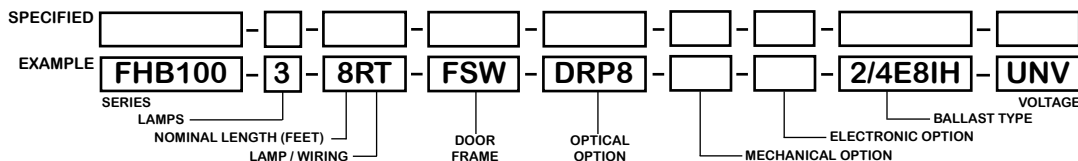
	NOMINAL LENGTH	TOTAL LAMPS		NOMINAL LENGTH	TOTAL LAMPS
FHB100-2-4M	4'	2	FHB100-3-4R	4'	3
FHB100-2-8MT	8'	4	FHB100-3-8RT	8'	6
FHB100-3-4M	4'	3	FHB100-4-4R	4'	4
FHB100-3-8MT	8'	6	FHB100-4-8RT	8'	8
FHB100-4-4M	4'	4			
FHB100-4-8MT	8'	8			

SUGGESTED LIGHTING LAYOUT



- Room Dimension: 40' x 20' x 20' (H)
- Room Reflectance: 80/80/50
- Luminaire: FHB100-3-8RT-DRP8-E8IH
- Average: 109 fc. on floor

ORDERING GUIDE



NOTE: LAMP/WIRING*

M= Miniature Bi-Pin T5
R = Medium Bi-Pin T8
MT= Miniature Bi-Pin T5, Tandem Wiring
RT = Medium Bi-Pin T8, Tandem Wiring

OPTIONS AND ACCESSORIES

OPTICAL OPTIONS

Polycarbonate Lenses
High Impact Acrylic

SUFFIX
PPC8
DRP8

MECHANICAL OPTIONS

Tamper Proof Screws (Hex Socket With Post)
Gasketing

SUFFIX
TP
GSK*

ELECTRICAL OPTIONS

Emergency Battery Pack
External Line Fusing (HLR/GLR)
Radio Interference Filters
Night Light

SUFFIX
BP*
ELF
RIF
NL*

BALLAST OPTIONS

Electronic T5
Electronic T5HO
Electronic Step Dimming T5HO
Electronic T8
Electronic Step Dimming T8

SUFFIX
E5*
E5H
ESDM5H
E8*
ESDM8*

ACCESSORIES

Hanger Yokes
Swing Out Jack

CAT. NO.
HS-12_1/2
SOJ

*See Appropriate Reference Page

SPECIFICATIONS

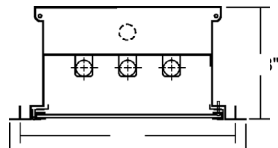
- **TYPE** Recessed mounted, 12" wide luminaires designed for handball and racquetball courts.
- **CONSTRUCTION** 22 ga. cold rolled steel housing. (20 ga. housing available as specified)
- **FINISH** Baked white polyester finish, minimum reflectance 86%. (Powder coated finish available.)
- **DOOR FRAME** 20 gauge cold rolled steel. Full length piano hinge. Captive screw catch.
- **GASKET** One way polyurethane gasketed standard. More options available.
- **OPTICS** .187 High impact "DR" formulated acrylic.
- **WIRING** 120v 60Hz., 277v 60Hz., UNV (universal voltage 120v thru 277v.) or as otherwise specified.
- **LABELS** U.L. Listed. Suitable for damp locations.



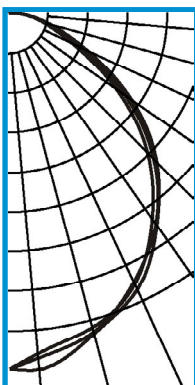
PHOTOMETRIC DATA

FHB100-3-8RT-DRP8-E8

TEST NO.=LA-T0956
 LAMP TYPE=FO32T8
 NO. OF LAMP=6
 LUMENS PER LAMP=2900
 WATTS PER LAMP=32
 BALLAST FACTOR=1
 PHOTOMETRY TYPE=C



Ceiling Opening X - 12 5/8" x 96 1/2"
 Overall Width By Length Y - 14" x 98"



CANDLEPOWER

ANGLE	END	45	CROSS
0	4214	4214	4214
5	4235	4095	4039
15	3913	3596	3842
25	3595	3495	3523
35	3036	3016	2938
45	2450	2395	2292
55	1734	1638	1513
65	977	882	788
75	467	439	394
85	145	132	131
90	11	10	7
95	0	0	0
105	0	0	0
115	0	0	0
125	0	0	0
135	0	0	0
145	0	0	0
155	0	0	0
165	0	0	0
175	0	0	0
180	0	0	0

ZONAL LUMEN SUMMARY

DEGREES	LUMENS	% LAMP	% FIXTURE
0-30	3128	18.0	32.0
0-40	5014	28.8	51.3
0-60	8322	47.8	85.2
0-90	9771	56.2	100.0
90-120	3	0.0	0.0
90-150	3	0.0	0.0
90-180	3	0.0	0.0
0-180	9773	56.2	100.0

Lumen Output = 9773 lumens
 Luminaire Efficiency = 56.2%

SPACING CRITERION

ALONG	ACROSS
1.17	1.14

This space is intentionally left blank.

This space is intentionally left blank.

This space is intentionally left blank.

