



# SECURITY

## FSE120 SERIES



### 2X2, Trim Flange Security Luminaire



- 2X2, Trim Flange Security Luminaire
- Welded and Painted After Fabrication
- Full Length Piano Hinge and Captive Tamper Proof Screws
- Nominal .187 High Impact Clear Prismatic Acrylic Lens
- One Way Polyurethane Gasketed
- Suitable for Damp Locations
- Available with:
  - Fluorescent, LED and LED T8 (Internally Driven)
  - Variety of Lens
  - Emergency Battery Pack



Photometric Data and IES Files are Available on [www.lalighting.com](http://www.lalighting.com)



**LOS ANGELES LIGHTING MFG. CO.**

10141 OLNEY ST. / EL MONTE, CA 91731

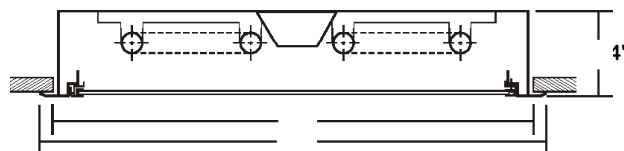
TEL : 626-454-8300 FAX : 626-454-8399

[www.lalighting.com](http://www.lalighting.com)



# FSE120 SERIES 2x2

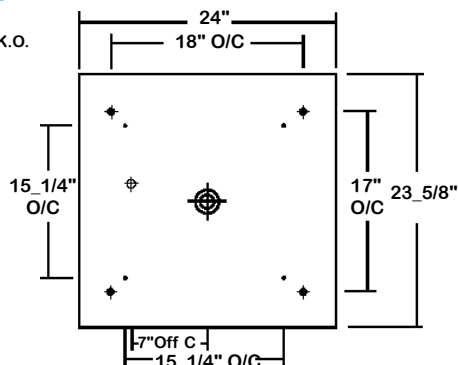
## CROSS SECTION



Ceiling Opening X - 24\_1/2" x 24\_1/4"  
Overall Width By Length Y - 26" x 26"

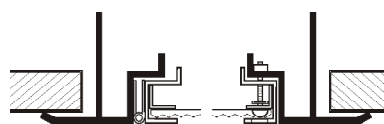
## BACK PLATE

- 3/8" K.O.
- 11/16" STEM MTG. K.O.
- 7/8" OFFSET K.O.
- 2" K.O.



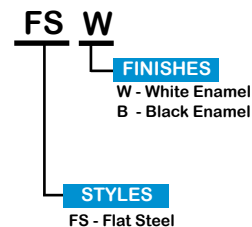
## DOOR FRAME INFORMATION

### CROSS SECTION



### EXPLANATION

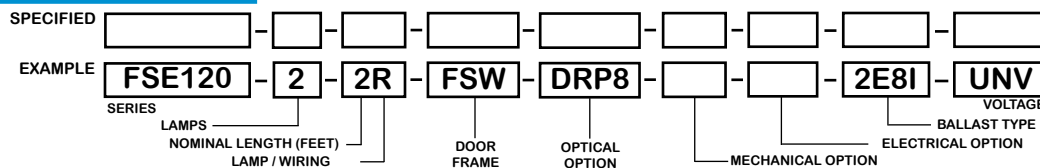
1. Continuous Piano Hinge.
2. Two Captive Tamper Proof Screws (Hex Socket With Post).
3. Inner Frame Lens Retainer Rail.



## CATALOG NUMBER

	NOMINAL WIDTH X LENGTH	TOTAL LAMPS		NOMINAL WIDTH X LENGTH	TOTAL LAMPS		NOMINAL WIDTH X LENGTH	TOTAL LAMPS
FSE120-2-2M	2' X 2'	2	FSE120-2-2R	2' X 2'	2	FSE120-2-2RU1	2' X 2'	2
FSE120-3-2M	2' X 2'	3	FSE120-3-2R	2' X 2'	3	FSE120-3-2RU1	2' X 2'	3
FSE120-4-2M	2' X 2'	4	FSE120-4-2R	2' X 2'	4	FSE120-2-2RU6	2' X 2'	2

## ORDERING GUIDE



**NOTE: LAMP/WIRING\***  
 M = Miniature Bi-Pin T5  
 R = Medium Bi-Pin T8  
 RU1 = Medium Bi-Pin T8 U Shaped 1\_5/8" Spacing  
 RU6 = Medium Bi-Pin T8 U Shaped 6" Spacing

## OPTIONS AND ACCESSORIES

### OPTICAL OPTIONS

- High Impact Clear Prismatic Acrylic .187
- High Impact Clear Prismatic Acrylic .125
- Clear Prismatic Polycarbonate .125

\* Other Lens Available Upon Request

### MECHANICAL OPTIONS

- Gasketing

### SUFFIX

- DRP8
- DRP2
- PPC2

### ELECTRICAL OPTIONS

- Emergency Battery Pack
- External Line Fusing (HLR/GLR)
- Radio Interference Filters
- Night Light

### SUFFIX

- BP\*
- ELF
- RIF
- NL\*

### BALLAST OPTIONS

- Electronic T5
- Electronic T5HO
- Electronic Step Dimming T5HO
- Electronic T8
- Electronic Step Dimming T8

### ACCESSORIES

- Hanger Yokes

### SUFFIX

- E5\*
- E5H
- ESDM5H
- E8\*
- ESDM8\*

CAT. NO. HS-24\_1/2

\*See appropriate reference page

## SPECIFICATIONS

- TYPE
- CONSTRUCTION
- FINISH
- DOOR FRAME
- GASKET
- OPTICS
- WIRING
- LABELS

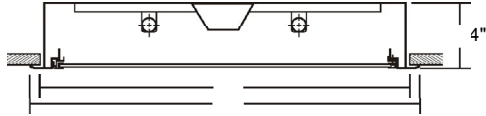
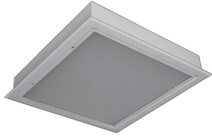
Recessed trim flanged 24" wide security luminaire. Design for use in public areas where vandalism may be a problem.  
 20 gauge cold rolled steel welded housing.  
 Baked white powder coated finish, minimum reflectance 90%, painted after fabrication.  
 20 gauge cold rolled steel. Full length piano hinge and 2 captive tamper proof screws (hex socket with post).  
 Inner frame lens retainer rail.  
 One way polyurethane gasketed standard. More options available.  
 .187 high impact clear prismatic acrylic standard.  
 120v 60Hz., 277v 60Hz., UNV (universal voltage 120v thru 277v.) or as otherwise specified.  
 U.L. Listed. Suitable for damp locations. Compatible with UL Fire-Rated Ceiling Assemblies.



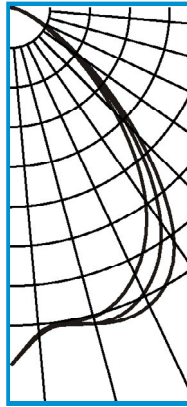
**PHOTOMETRIC DATA**

**FSE120-2-2R-FSW-DRP8-E8**

TEST NO.=LA-T0381-3  
 LAMP TYPE=FO17T8  
 NO. OF LAMP=2  
 LUMENS PER LAMP=1350  
 WATTS PER LAMP=17  
 BALLAST FACTOR=1  
 PHOTOMETRY TYPE=C



Ceiling Opening X - 24\_1/2" x 24\_1/4"  
 Overall Width By Length Y - 26" x 26"



**CANDLEPOWER**

ANGLE	END	45	CROSS
0	880	880	880
5	808	806	802
15	765	804	805
25	721	773	806
35	574	639	696
45	356	398	434
55	166	182	201
65	64	67	72
75	18	18	20
85	2	3	3
90	0	0	0
95	0	0	0
105	0	0	0
115	0	0	0
125	0	0	0
135	0	0	0
145	0	0	0
155	0	0	0
165	0	0	0
175	0	0	0
180	0	0	0

**ZONAL LUMEN SUMMARY**

DEGREES	LUMENS	% LAMP	% FIXTURE
0-30	660	24.4	40.7
0-40	1060	39.2	65.4
0-60	1531	56.7	94.5
0-90	1620	60.0	100.0
90-120	0	0.0	0
90-150	0	0.0	0
90-180	0	0.0	0
0-180	1620	60.0	100.0

Lumen Output = 1620 lumens  
 Luminaire Efficiency = 60.0%

**SPACING CRITERION**

ALONG	ACROSS
1.11	1.25

This space is intentionally left blank.

This space is intentionally left blank.

This space is intentionally left blank.

