



# BAYLIGHTER™

## GBL520 SERIES

### Medium / High Bay Luminaire



- Medium / High Bay Compact Fluorescent Luminaire
- Auditorium, Commercial, Retail Applications
- Inverted T-Bar Ceiling Installing
- 40W, 50W, 55W Biax® Lamp
- 95% Enhanced Specular Aluminum Reflectors
- Frame & Lens Assembly With Safety Cables
- 1½" Deep Semi-specular 9-Cell Louver
- Compatible With UL Fire-Rated Ceiling
- Available with:
  - 90% White Aluminum Reflectors
  - Emergency Battery Pack



Photometric Data and IES Files are Available on [www.lalighting.com](http://www.lalighting.com)



**LOS ANGELES LIGHTING MFG. CO.**

10141 OLNEY ST. / EL MONTE, CA 91731

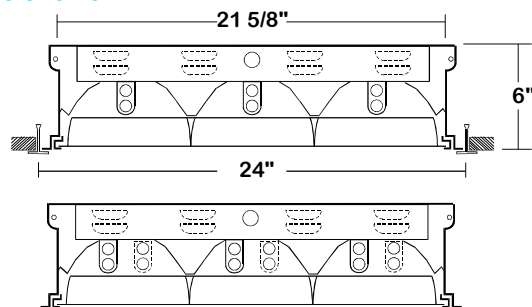
TEL : 626-454-8300 FAX : 626-454-8399

[www.lalighting.com](http://www.lalighting.com)



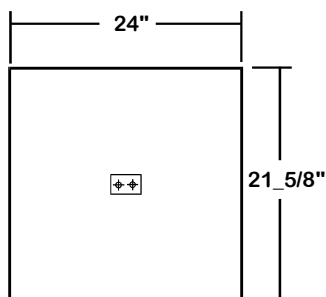
## GBL520 SERIES

### CROSS SECTION



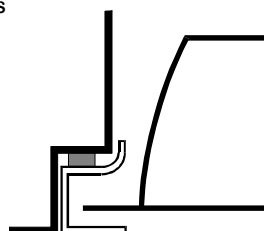
### BACK PLATE

ACCESS PLATE



### DOOR FRAME INFORMATION

CROSS SECTION  
FS



FS W

#### FINISHES

W - White Enamel  
B - Black Enamel

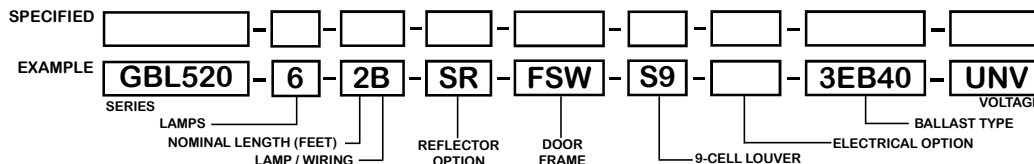
#### STYLES

FS - Flat Steel

### CATALOG NUMBER

CATALOG NUMBER	NOMINAL LENGTH	TOTAL LAMPS
GBL520-3-2B	2' X 2'	3
GBL520-6-2B	2' X 2'	6

### ORDERING GUIDE



**NOTE: LAMP/WIRING\***  
B= Compact Twin Tube

### OPTIONS AND ACCESSORIES

#### REFLECTOR OPTIONS

Specular Aluminum Reflector (95%)  
White Aluminum Reflector (90%)

SUFFIX

SR  
WR

#### ELECTRICAL OPTIONS

Emergency Battery Pack  
External Line Fusing (HLR/GLR)  
Radio Interference Filters

SUFFIX

BP\*  
ELF  
RIF

#### BALLAST OPTIONS

Electronic 40W Compact Twin Tube  
Electronic 50W Compact Twin Tube  
Electronic 55W Compact Twin Tube

SUFFIX

EB40  
EB50  
EB55

\*See appropriate reference page

### SPECIFICATIONS

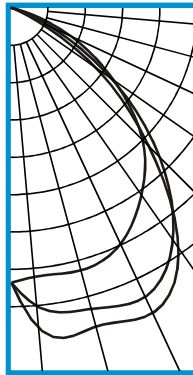
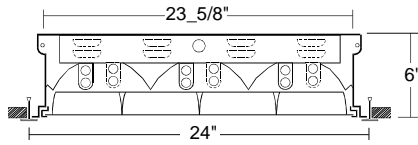
- TYPE** Recessed mounted, high bay / low bay general area lighter for inverted T-Bar installations.
- CONSTRUCTION** 22 gauge cold rolled steel housing with louvered vents on each side for heat removal. (20 GA. housing available as specified.)
- FINISH** Baked white polyester finish, minimum reflectance 86%. (Powder coated finish available.)
- REFLECTOR** Enhanced aluminum reflectors, 95% reflectance.
- DOOR FRAME** 20 gauge cold rolled steel in various finishes. T-hinge, positive spring loaded latch. Safety cables attached.
- OPTICS** 1\_1/2" deep semi-specular parabolic 9 cells louver standard.
- WIRING** 120v 60Hz., 277v 60Hz., UNV (universal voltage 120v thru 277v.) or as otherwise specified.  
Up to 6 levels of switching available as specified.
- LABELS** U.L. Listed. Compatible with UL Fire-Rated Ceiling Assemblies. Suitable for damp locations.



**PHOTOMETRIC DATA**

**GBL520-6-2B-SR-FSW-S9-EB40**

TEST NO.=LA-T0449  
 LAMP TYPE=F40BX  
 NO. OF LAMP=6  
 LUMENS PER LAMP=3150  
 WATTS PER LAMP=40  
 BALLAST FACTOR=1  
 PHOTOMETRY TYPE=C



**CANDLEPOWER**

ANGLE	END	45	CROSS
0	5039	5039	5039
5	4950	5497	5910
15	4979	5712	6044
25	4761	5837	6164
35	4161	5165	5339
45	3396	3831	3543
55	2267	2207	1844
65	1165	758	330
75	192	81	66
85	0	0	0
90	0	0	0
95	0	0	0
105	0	0	0
115	0	0	0
125	0	0	0
135	0	0	0
145	0	0	0
155	0	0	0
165	0	0	0
175	0	0	0
180	0	0	0

**ZONAL LUMEN SUMMARY**

DEGREES	LUMENS	% LAMP	% FIXTURE
0-30	4725	25.0	35.2
0-40	7839	41.5	58.3
0-60	12578	66.6	93.6
0-90	13437	71.1	100.0
90-120	0	0.0	0
90-150	0	0.0	0
90-180	0	0.0	0
0-180	13437	71.1	100.0

Lumen Output = 13437 lumens  
 Luminaire Efficiency = 71.1%

**SPACING CRITERION**

ALONG	ACROSS
1.30	1.51

This space is intentionally left blank.

This space is intentionally left blank.

This space is intentionally left blank.

