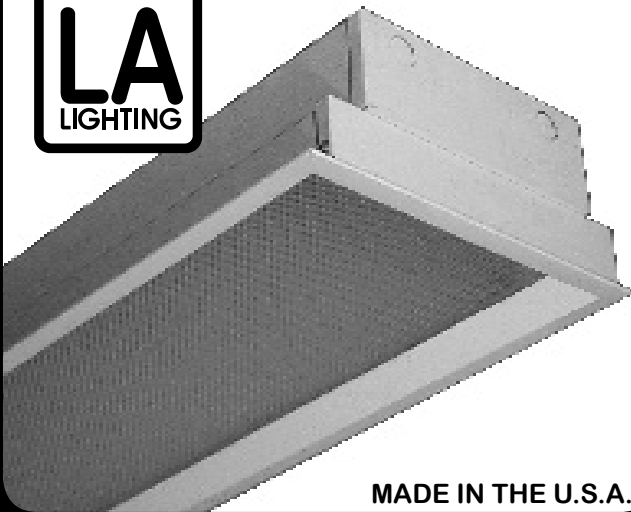


RECESSED



MADE IN THE U.S.A.

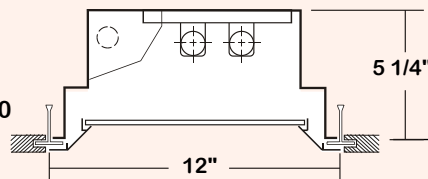
GCT610 SERIES 1X4

- Premium Grade Concealed T-Bar Troffea
- For Butt Trim or Over Overlapping Trim with Ceiling Tile
- 1 1/4" Regressed Aluminum Door Frame
- Door Frame Secured to Fixture Housing By Torsion Springs
- Extensive Variety of Lenses Available

PHOTOMETRIC DATA

TEST ITEM=GCT610-2-4R-PA

TEST NO.=LA-T0583
 LAMP TYPE=FO32/31K
 NO. OF LAMP=2
 LUMENS PER LAMPS=2900
 WATTS PER LAMP=32
 BALLAST FACTOR=1
 PHOTOMETRY TYPE=C



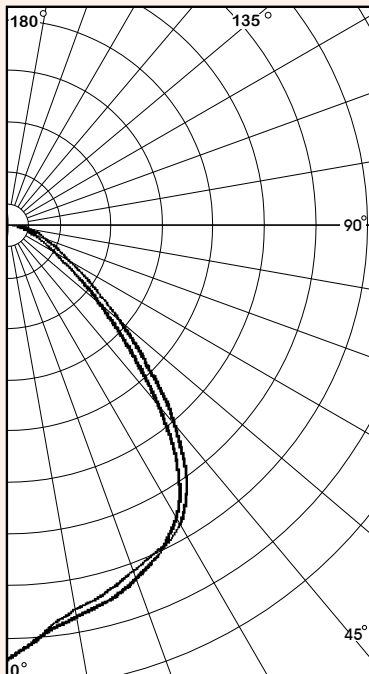
ZONAL LUMEN SUMMARY

DEGREES	LUMENS	% LAMP	% FIXTURE
0-30	1288	22.2	38.9
0-40	2079	35.8	62.8
0-60	3006	51.8	90.8
0-90	3310	57.1	100.0
90-120	0	0.0	0.0
90-130	0	0.0	0.0
90-150	0	0.0	0.0
90-180	0	0.0	0.0
0-180	3310	57.1	100.0

Total Luminaire Optical Efficiency = 57.1%

LUMINAIRE SPACING CRITERION

ALONG	ACROSS
1.15	1.14



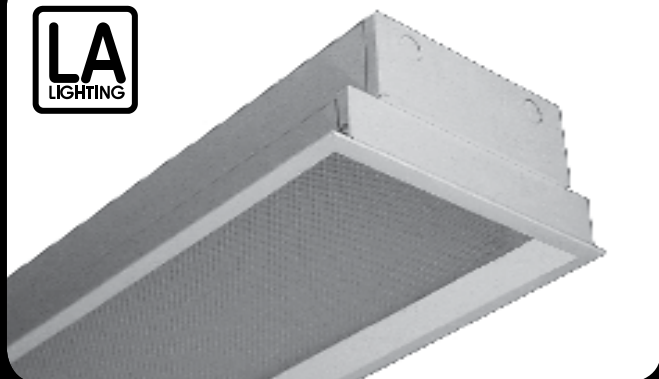
CANDLEPOWER

Angle	End	45	Cross
0	1781	1781	1781
5	1682	1685	1686
15	1551	1547	1592
25	1473	1483	1480
35	1290	1256	1232
45	822	761	705
55	404	380	341
65	210	191	167
75	113	94	73
85	35	18	11
90	1	0	0
95	0	0	0
105	0	0	0
115	0	0	0
125	0	0	0
135	0	0	0
145	0	0	0
155	0	0	0
165	0	0	0
175	0	0	0
180	0	0	0

COEFFICIENT OF UTILIZATION

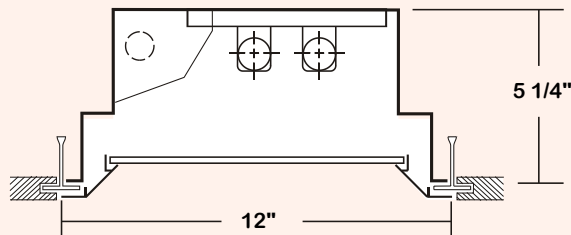
pfc	COEFFICIENT OF UTILIZATION														
	20			70			50			30			10		0
pcc	70	50	30	70	50	30	50	30	50	30	50	30	50	30	0
pw	70	50	30	70	50	30	50	30	50	30	50	30	50	30	0
RCR															
0	68	68	68	66	66	66	63	63	60	60	58	58	57		
1	63	61	59	61	59	58	57	56	55	54	53	52	50		
2	58	54	51	57	53	50	51	49	50	48	48	46	44		
3	54	49	45	53	48	44	46	43	45	42	43	41	38		
4	50	44	40	49	43	39	42	39	41	38	40	37	34		
5	46	40	35	45	39	35	38	35	37	34	36	33	30		
6	43	36	32	42	36	32	35	31	34	31	33	30	27		
7	40	33	29	39	33	29	32	28	31	28	31	27	24		
8	38	31	26	37	30	26	30	26	29	25	28	25	22		
9	35	28	24	35	28	24	27	24	27	23	26	23	20		
10	33	26	22	32	26	22	25	22	25	21	24	21	18		

RECESSED



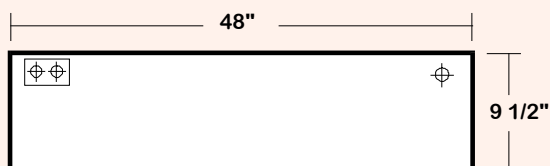
**GCT610 SERIES
1X4**

CROSS SECTION



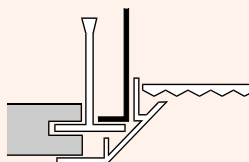
BACKPLATE

ACCESS PLATE 7/8" K.O.



DOOR FRAME INFORMATION

● **CROSS SECTION**



● **FINISHES**

- W - White Enamel
- B - Black Enamel

● **STYLES**

- RA - 1 1/4" Regressed Aluminum

● **EXAMPLE**

- RAW - Regress Aluminum White Enamel Finish

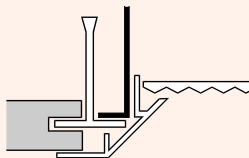
CATALOG NUMBER

CATALOG NUMBER	NOMINAL WIDTH X LENGTH	TOTAL LAMPS
GCT610-1-4M	1' X 4'	1
GCT610-2-4M	1' X 4'	2
GCT610-1-4R	1' X 4'	1
GCT610-2-4R	1' X 4'	2

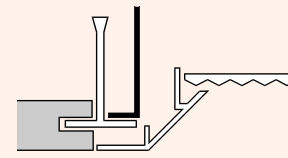
Note: To Denote Specular Aluminum Cover Add "SR" To Beginning Of Catalog Number.

TRIM INFORMATION

● **CROSS SECTION**



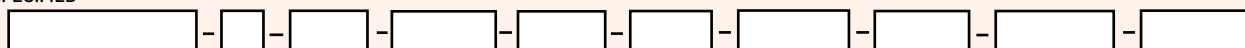
OT - Overlapping Trim



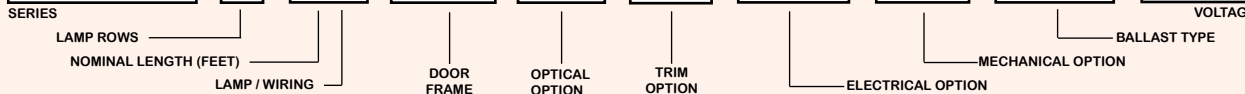
BT - Butt Trim

ORDERING GUIDE

SPECIFIED



EXAMPLE



NOTE: LAMP/WIRING* M= Miniature Bi-Pin T5 R= Medium Bi-Pin T8

OPTIONS and ACCESSORIES

● **BALLAST OPTIONS**

Electronic Ballasts T5	SUFFIX E5
Electronic Ballasts T5HO	E5H
Electronic Dimming T5HO Ballast	E5HDM
Electronic Ballasts T8	*
Electronic Ballasts T12	*
Electronic Dimming Ballast	EDM
Digital Addressable Ballast	DAB

● **ELECTRICAL OPTIONS**

- Emergency Battery Pack
- External Line Fusing (HLR/GLR)
- Radio Interference Filters
- Night Light (Fluor. 7W or 9W)

SUFFIX

- *
- ELF
- RIF
- NL9

● **MECHANICAL OPTIONS**

- Damp Location

SUFFIX

- DL

● **OPTICAL OPTIONS**

- Holophane® Lenses
- Parabolic Plastic Louvers
- Polycarbonate Lenses
- High Impact Acrylic
- Flat White Matte Diffusers
- Dropped Opal Pans
- Clear Prismatic Acrylic

SUFFIX

- *
- *
- *
- *
- FWA
- DP
- PA

*See Appropriate Reference Page

SPECIFICATIONS

- TYPE
- DOOR FRAME
- OPTIC
- CONSTRUCTION
- FINISH
- WIRING
- LABELS

Recessed mounted luminaires for installations in concealed T-bar applications. Heavy wall aluminum extrusions secured to the lighting fixture by four torsion springs. Available in white or black enamel or anodized as specified. Clear prismatic acrylic standard. Extensive variety of lenses, diffusers and louvers available. 22 ga. cold rolled steel housing. (20 ga. housing available as specified) Baked white polyester finish, minimum reflectance 86%. (Powder coated finish available.) 120v 60Hz., 277v 60Hz., UNV (universal voltage 120v thru 277v.) or as otherwise specified. U.L. Listed. Compatible with UL Fire-Rated Ceiling Assemblies.

MADE IN THE U.S.A.

