

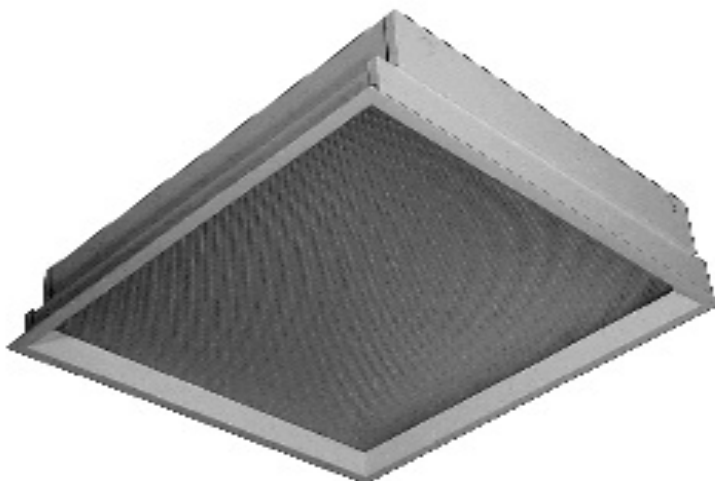


RECESSED

GDH420 SERIES



6" Depth / T-Bar Recessed Mounted



- 2X2, 6" Depth / T-Bar Recessed Mounted Luminaire
- 22 Gauge Cold Rolled Steel Housing
- 2" Deep Regressed Extruded Aluminum Door Frame
- T-Hinge And Spring Loaded Latch
- One Way Polyurethane Gasketed
- Suitable for Damp Locations
- Available with:
 - Fluorescent, LED and LED T8 (Internally Driven)
 - Variety of Lens Options
 - Emergency Battery Pack



Photometric Data and IES Files are Available on www.lalighting.com



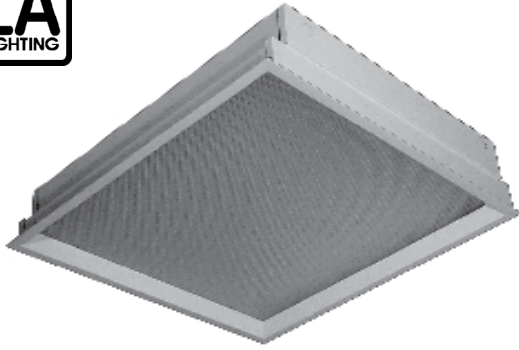
LOS ANGELES LIGHTING MFG. CO.

10141 OLNEY ST. / EL MONTE, CA 91731

TEL : 626-454-8300 FAX : 626-454-8399

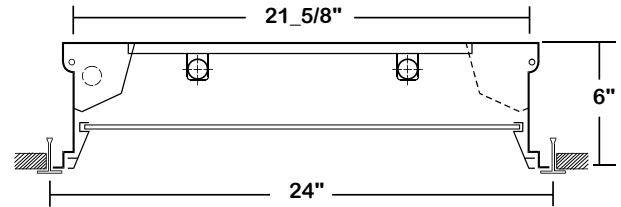
www.lalighting.com

RECESSED - LED T8 (Internally Driven)



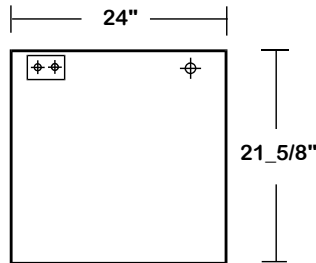
GDH420 SERIES - LED T8
2x2

CROSS SECTION



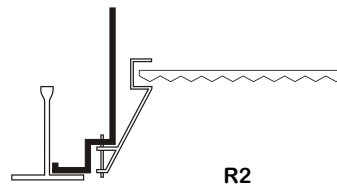
BACK PLATE

- ACCESS PLATE
- 7/8" K.O.



DOOR FRAME INFORMATION

CROSS SECTION



R2 W

FINISHES

- W - White Enamel
- B - Black Enamel
- N - Natural Anodized Aluminum

STYLES

R2 - 2" Regress

CATALOG NUMBER

CATALOG NUMBER	NOMINAL WIDTH X LENGTH	TOTAL MODULES
GDH420-1-2Lx	2' X 2'	1
GDH420-2-2Lx	2' X 2'	2
GDH420-3-2Lx	2' X 2'	3
GDH420-4-2Lx	2' X 2'	4

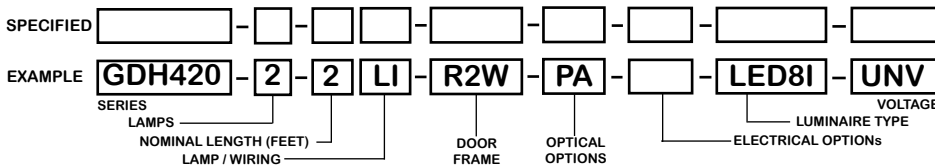
TS2 - LED Luminaire

On/Off Safety Switch



- Easily accessible on exterior of wire way.
- Allows individual fixture to be switched ON/OFF during re-lamping or Maintenance.
- Prevents damage to lamp and electrical shock during lamping and re-lamping.
- Allows safe entry to wire way channel where power connector can be disconnected for maintenance to fixture.

ORDERING GUIDE



LAMP / WIRING

LI = LED T8 internal driver light tube.
Both ends powered.
Shunted sockets used.



LI.R = LED T8 internal driver light tube.
Single end powered.
Non-shunted sockets used.



OPTIONS AND ACCESSORIES

OPTICAL OPTIONS

- Clear Acrylic
 - Clear Prismatic Acrylic
 - Flat White Acrylic
 - Polycarbonate Lenses
 - High Impact Acrylic
- Note: Other lens available upon request

SUFFIX

- CA
- PA
- FWA
- *
- *

ELECTRICAL OPTIONS

- LED Luminaire ON/OFF Safety Switch

SUFFIX

- TS2

*See appropriate reference page

SPECIFICATIONS

- TYPE
- CONSTRUCTION
- FINISH
- DOOR FRAME

Recessed mounted luminaire available in various lengths and widths. For inverted Tee-Bar installations. 22 ga. cold rolled steel housing. (20 ga. housing available as specified)
Baked white polyester finish, minimum reflectance 86%. (Powder coated finish available.)
Heavy wall 2" deep aluminum extrusion. T-hinge, positive spring loaded latch. Two gussets installed in each corner for maximum strength and true miter alignment.
Clear prismatic acrylic standard. Extensive variety of lenses, diffusers and louvers available.
Operate LED T8 internally driven light tube(s)**.
U.L. Listed. Suitable for damp locations. Compatible with UL Fire-Rated Ceiling Assemblies.

** Lamp(s) by others.

- OPTICS
- WIRING
- LABELS

