

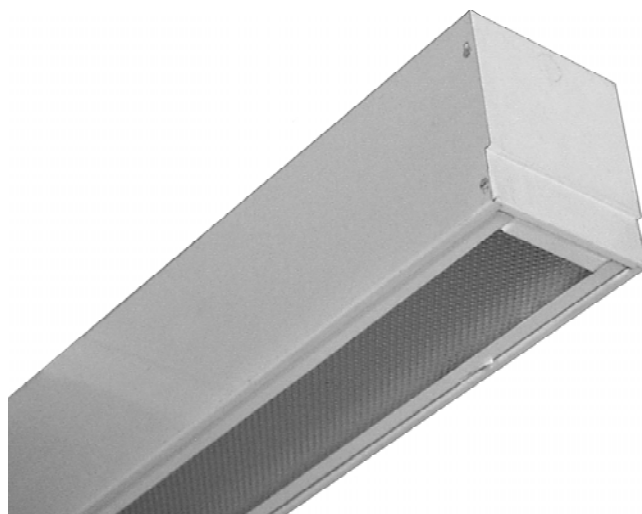


# RECESSED

## GHL306 SERIES



### 6" Width / Premium Grade T-Bar



- 6" Width / Premium Grade T-Bar Luminaire
- 22 Gauge Cold Rolled Steel Housing
- 20 Gauge Steel or Extruded Aluminum Door Frame Screwed at Each Corner
- Door Frame Painted After Fabrication
- One Way Polyurethane Gasketed
- T-Hinge And Spring Loaded Latch
- Riveted-On End Caps
- Suitable for Damp Locations
- Available with:
  - Fluorescent, LED and LED T8 (Internally Driven)
  - Variety of Lens Options
  - Emergency Battery Pack



*Photometric Data and IES Files are Available on [www.lalighting.com](http://www.lalighting.com)*



**LOS ANGELES LIGHTING MFG. CO.**

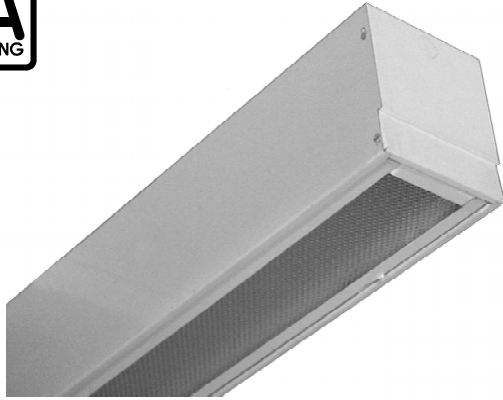
10141 OLNEY ST. / EL MONTE, CA 91731

TEL : 626-454-8300 FAX : 626-454-8399

[www.lalighting.com](http://www.lalighting.com)

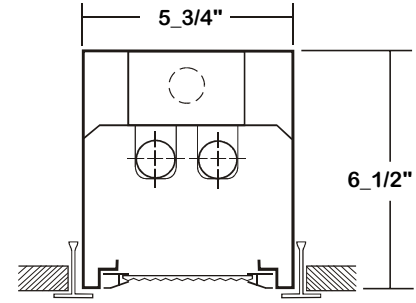
**RECESSED - Fluorescent**

LED Equivalent Products Available on [www.lalighting.com](http://www.lalighting.com)



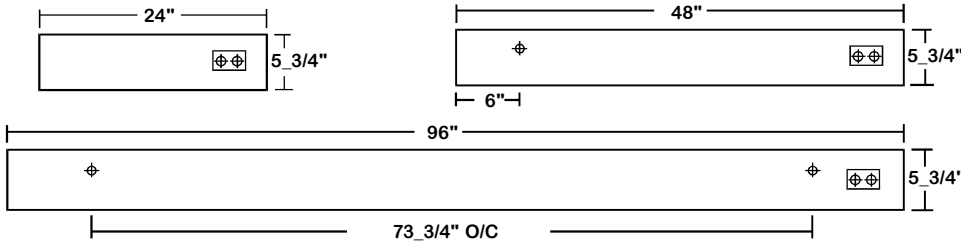
**GHL306 SERIES**

**CROSS SECTION**



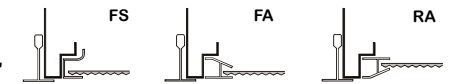
**BACK PLATE**

ACCESS PLATE 7/8" K.O.



**DOOR FRAME INFORMATION**

**CROSS SECTION**



**CATALOG NUMBER**

	NOMINAL LENGTH	TOTAL LAMPS		NOMINAL LENGTH	TOTAL LAMPS
GHL306-1-2M	2'	1	GHL306-1-2R	2'	1
GHL306-1-4M	4'	1	GHL306-1-4R	4'	1
GHL306-1-8MT	8'	2	GHL306-1-8RT	8'	2
GHL306-2-2M	2'	2	GHL306-2-2R	2'	2
GHL306-2-4M	4'	2	GHL306-2-4R	4'	2
GHL306-2-8MT	8'	4	GHL306-2-8RT	8'	4

**FS W**

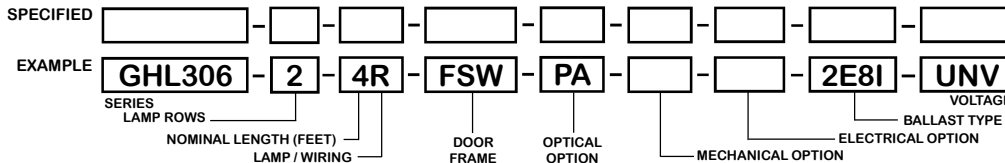
**FINISHES**

W - White Enamel  
B - Black Enamel  
N - Natural Anodized Aluminum

**STYLES**

FS - Flat Steel  
FA - Flat Extruded Aluminum  
RA - 5/8" Regressed Extruded Aluminum

**ORDERING GUIDE**



**NOTE: LAMP/WIRING\***

M= Miniature Bi-Pin T5  
R = Medium Bi-Pin T8  
MT= Miniature Bi-Pin T5, Tandem Wiring  
RT = Medium Bi-Pin T8, Tandem Wiring

**OPTIONS AND ACCESSORIES**

**OPTICAL OPTIONS**

Clear Acrylic  
Clear Prismatic Acrylic  
Polycarbonate Lenses  
High Impact Acrylic  
*Note: Other lens available upon request*

**SUFFIX**

CA  
PA  
\*  
\*

**MECHANICAL OPTIONS**

Gasketing

**SUFFIX**

GSK\*

**ELECTRICAL OPTIONS**

Emergency Battery Pack  
External Line Fusing (HLR/GLR)

**SUFFIX**

BP\*  
ELF

**BALLAST OPTIONS\***

Electronic T5  
Electronic T5HO  
Electronic T8 Instant Start  
Electronic T8 Rapid Start  
Electronic T8HO

**SUFFIX**

xE5  
xE5H  
xE81  
xE8R  
xE8H

x = Number of Lamps per Ballast

\*Refer to [www.lalighting.com/resources](http://www.lalighting.com/resources) for more information

**SPECIFICATIONS**

- TYPE**
- CONSTRUCTION**
- FINISH**
- DOOR FRAME**
- GASKET**
- OPTICS**
- WIRING**
- LABELS**

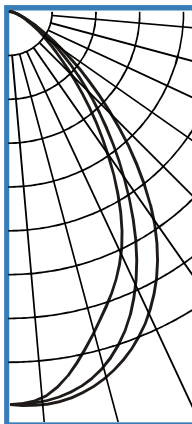
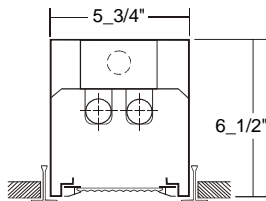
A versatile recessed luminaire. For inverted Tee-Bar installations. Available in various lengths.  
22 ga. cold rolled steel housing. (20 ga. housing available as specified)  
Baked white polyester finish, minimum reflectance 86%. (Powder coated finish available.)  
20 gauge cold rolled steel or extruded aluminum in various finishes. T-hinge, positive spring loaded latch.  
One way polyurethane gasketed standard. More options available.  
Clear prismatic acrylic standard. Extensive variety of lenses, diffusers and louvers available.  
120v 60Hz., 277v 60Hz., UNV (universal voltage 120v thru 277v.) or as otherwise specified.  
U.L. Listed. Suitable for damp locations. Compatible with UL Fire-Rated Ceiling Assemblies.



# PHOTOMETRIC DATA

## GHL306-2-4R-PA-E8

TEST NO.=LA-T0341  
 LAMP TYPE=FO32T8  
 NO. OF LAMP=2  
 LUMENS PER LAMP=2900  
 WATTS PER LAMP=32  
 BALLAST FACTOR=1  
 PHOTOMETRY TYPE=C



## CANDLEPOWER

ANGLE	END	45	CROSS
0	1284	1284	1284
5	1288	1277	1264
15	1232	1196	1275
25	1079	973	860
35	813	639	546
45	457	348	269
55	189	151	119
65	62	55	46
75	17	15	15
85	3	2	1
90	0	0	0
95	0	0	0
105	0	0	0
115	0	0	0
125	0	0	0
135	0	0	0
145	0	0	0
155	0	0	0
165	0	0	0
175	0	0	0
180	0	0	0

## ZONAL LUMEN SUMMARY

DEGREES	LUMENS	% LAMP	% FIXTURE
0-30	904	15.6	50.2
0-40	1319	22.7	73.2
0-60	1731	29.8	96.0
0-90	1803	31.1	100.0
90-120	0	0.0	0
90-150	0	0.0	0
90-180	0	0.0	0
0-180	1803	31.1	100.0

Lumen Output = 1803 lumens  
 Luminaire Efficiency = 31.1%

## SPACING CRITERION

ALONG	ACROSS
1.11	0.92

This space is intentionally left blank.

This space is intentionally left blank.

This space is intentionally left blank.

