



RECESSED

GHL320 SERIES



2X2, 5" Depth / Premium Grade T-Bar



- 2X2, 5" Depth / Premium Grade T-Bar Luminaire
- 22 Gauge Cold-Rolled Steel Housing
- Screwed-On End Caps
- 20 Gauge Steel or Extruded Aluminum Door Frame Screwed at Each Corner
- Door Frame Painted After Fabrication
- One Way Polyurethane Gasket
- T-Hinges And Spring Loaded Latches
- Available with:
 - Fluorescent, LED and LED T8 (Internally Driven)
 - Variety of Lens Options
 - Emergency Battery Pack



Photometric Data and IES Files are Available on www.lalighting.com



LOS ANGELES LIGHTING MFG. CO.

10141 OLNEY ST. / EL MONTE, CA 91731

TEL : 626-454-8300 FAX : 626-454-8399

www.lalighting.com

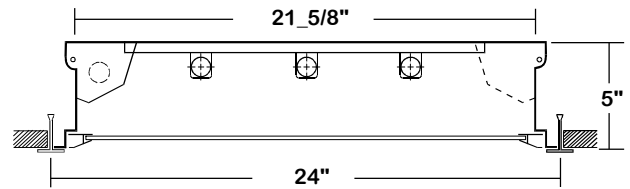
RECESSED - Fluorescent

LED Equivalent Products Available on www.lalighting.com



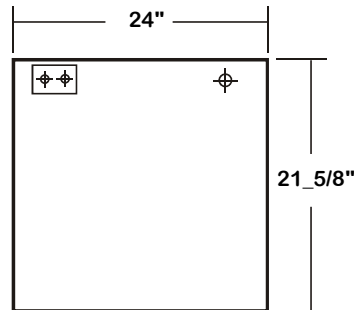
**GHL320 SERIES
2x2**

CROSS SECTION



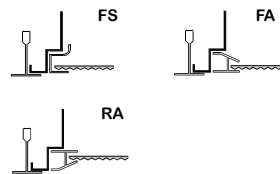
BACK PLATE

- ⊕ ⊕ ACCESS PLATE
- ⊕ 7/8" K.O.



DOOR FRAME INFORMATION

● **CROSS SECTION**



FS W

FINISHES

- W - White Enamel
- B - Black Enamel
- N - Natural Anodized Aluminum

STYLES

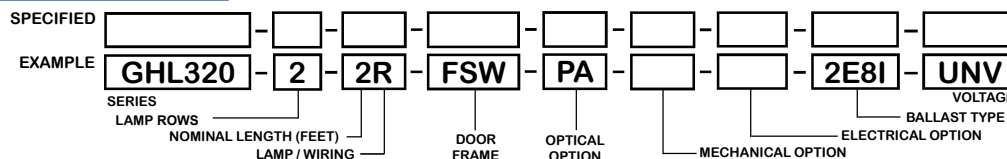
- FS - Flat Steel
- FA - Flat Extruded Aluminum
- RA - 5/8" Regressed Extruded Aluminum

CATALOG NUMBER

	NOMINAL WIDTH X LENGTH	TOTAL LAMPS
GHL320-2-2M	2' X 2'	2
GHL320-3-2M	2' X 2'	3
GHL320-4-2M	2' X 2'	4
GHL320-2-2R	2' X 2'	2
GHL320-3-2R	2' X 2'	3
GHL320-4-2R	2' X 2'	4

	NOMINAL WIDTH X LENGTH	TOTAL LAMPS
GHL320-2-2RU6	2' X 2'	2

ORDERING GUIDE



NOTE: LAMP/WIRING*
 M = Miniature Bi-Pin T5
 R = Medium Bi-Pin T8
 RU6 = Medium Bi-Pin T8 U Shaped 6" Spacing

OPTIONS AND ACCESSORIES

● **OPTICAL OPTIONS**

- Clear Acrylic
- Clear Prismatic Acrylic
- Flat Frosted White Acrylic
- Polycarbonate Lenses
- High Impact Acrylic
- Note: Other lenses available upon request*

- SUFFIX**
- CA
 - PA
 - FFWA
 - *
 - *

● **MECHANICAL OPTIONS**

- Gasketing
- **ELECTRICAL OPTIONS**
- Emergency Battery Pack
- External Line Fusing (HLR/GLR)

- SUFFIX**
- GSK*

- SUFFIX**
- BP*
 - ELF

● **BALLAST OPTIONS ***

- Electronic T5 xE5
- Electronic T5HO xE5H
- Electronic T8 Instant Start xE8I
- Electronic T8 Rapid Start xE8R
- Electronic T8HO xE8H

x = Number of Lamps per Ballast

*Refer to www.lalighting.com/resources for more information

SPECIFICATIONS

- **TYPE**
- **CONSTRUCTION**
- **FINISH**
- **DOOR FRAME**
- **GASKET**
- **OPTICS**
- **WIRING**
- **LABELS**

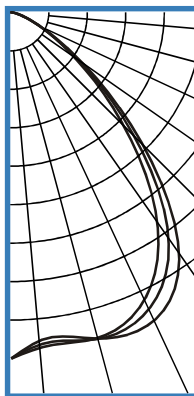
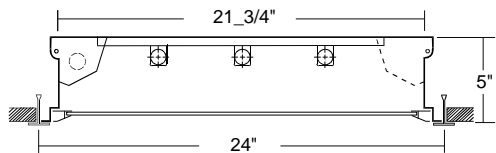
Versatile recessed luminaire. For mounting in inverted T-Bar installations.
 22 ga. cold rolled steel housing. (20 ga. housing available as specified)
 Baked white polyester finish, minimum reflectance 86%. (Powder coated finish available.)
 20 gauge cold rolled steel or extruded aluminum in various finishes. T-hinge, positive spring loaded latch.
 One way polyurethane gasketed standard. More options available.
 Clear prismatic acrylic standard. Extensive variety of lenses, diffusers and louvers available.
 120v 60Hz., 277v 60Hz., UNV (universal voltage 120v thru 277v.) or as otherwise specified.
 U.L. Listed. Suitable for damp locations. Compatible with UL Fire-Rated Ceiling Assemblies.



PHOTOMETRIC DATA

GHL320-2-2R-FSW-PA-E8

TEST NO.=LA-T0512
 LAMP TYPE=F017T8
 NO. OF LAMP=2
 LUMENS PER LAMP=1350
 WATTS PER LAMP=17
 BALLAST FACTOR=1
 PHOTOMETRY TYPE=C



CANDLEPOWER

ANGLE	END	45	CROSS
0	838	838	838
5	814	807	797
15	815	818	817
25	765	790	821
35	615	663	707
45	380	417	446
55	180	190	204
65	71	69	72
75	19	20	19
85	2	2	3
90	0	0	0
95	0	0	0
105	0	0	0
115	0	0	0
125	0	0	0
135	0	0	0
145	0	0	0
155	0	0	0
165	0	0	0
175	0	0	0
180	0	0	0

ZONAL LUMEN SUMMARY

DEGREES	LUMENS	% LAMP	% FIXTURE
0-30	675	25.0	40.3
0-40	1091	40.4	65.1
0-60	1584	58.7	94.5
0-90	1676	62.1	100.0
90-120	0	0.0	0
90-150	0	0.0	0
90-180	0	0.0	0
0-180	1676	62.1	100.0

Lumen Output = 1676 lumens
 Luminaire Efficiency = 62.1%

SPACING CRITERION

ALONG	ACROSS
1.21	1.32

