

RECESSED



MADE IN THE U.S.A.

GIC110 SERIES

Center Basket 1X4

- Direct / Indirect T-Bar Luminaire
- Center Perforated Light Shield with Polyethylene Trims
- White Acrylic Diffuser
- Easy Access to Lamps and Ballasts
- Removable Wiring Access Plate
- High Reflectance, Low Gloss Matte White Finish

PHOTOMETRIC DATA

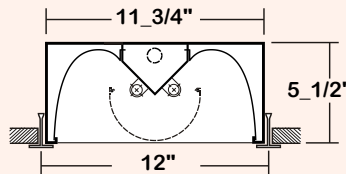
TEST ITEM=GIC110-2-4M-PDA-2E5H

TEST NO.=LA-T1754
 LAMP TYPE=F54T5HO
 NO. OF LAMP=2
 LUMENS PER LAMPS=5000
 WATTS PER LAMP=54
 BALLAST FACTOR=1
 PHOTOMETRY TYPE=C

SPACING CRITERION	
ALONG 1.17	ACROSS 1.17

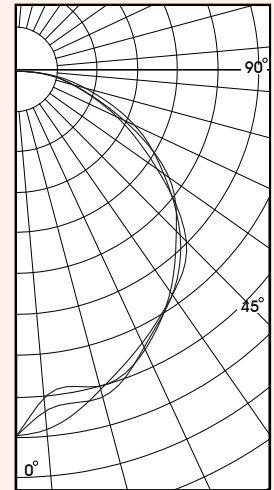
ZONAL LUMEN SUMMARY			
DEGREES	LUMENS	% LAMP	% FIXTURE
0-30	1410	14.1	26.9
0-40	2309	23.1	44.0
0-60	4118	41.2	78.5
0-90	5246	52.5	100.0
90-120	2	0.0	0.0
90-130	2	0.0	0.0
90-150	2	0.0	0.0
90-180	2	0.0	0.0
0-180	5248	52.5	100.0

CANDLEPOWER			
Angle	End	45	Cross
0	1930	1930	
5	1731	1903	
15	1725	1740	
25	1619	1583	
35	1421	1442	
45	1196	1272	
55	988	915	
65	642	600	
75	341	336	
85	133	125	
90	8	5	
95	0	0	
105	0	0	
115	0	0	
125	0	0	
135	0	0	
145	0	0	
155	0	0	
165	0	0	
175	0	0	
180	0	0	



Total Luminaire Optical Efficiency = 52.5%

COEFFICIENT OF UTILIZATION													
pfc	20					50					10		0
	80	70	30	70	50	30	50	30	50	30	50	30	0
pw	70	50	30	70	50	30	50	30	50	30	50	30	0
	RCR												
0	62	62	62	61	61	61	58	58	56	56	53	53	52
1	57	54	52	55	53	51	51	49	49	47	47	45	43
2	51	47	43	50	46	43	44	41	42	40	41	39	36
3	47	41	37	45	40	36	39	35	37	34	36	33	30
4	43	36	32	42	36	31	34	30	33	30	32	29	25
5	39	32	28	38	32	27	31	27	30	26	29	26	22
6	36	29	24	35	29	24	28	24	27	23	26	23	19
7	34	26	22	33	26	21	25	21	24	21	24	20	17
8	31	24	19	30	24	19	23	19	22	19	22	18	15
9	29	22	18	28	22	17	21	17	20	17	20	17	13
10	27	20	16	27	20	16	19	16	19	15	18	15	12



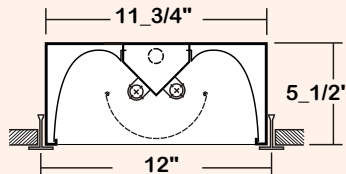
TEST ITEM=GIC110-2-4R-PDA-E8

TEST NO.=LA-T1727
 LAMP TYPE=FO32/31K
 NO. OF LAMP=2
 LUMENS PER LAMPS=2900
 WATTS PER LAMP=32
 BALLAST FACTOR=1
 PHOTOMETRY TYPE=C

SPACING CRITERION	
ALONG 1.27	ACROSS 1.26

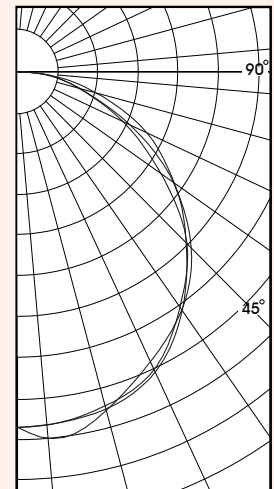
ZONAL LUMEN SUMMARY			
DEGREES	LUMENS	% LAMP	% FIXTURE
0-30	787	13.6	27.4
0-40	1288	22.2	44.8
0-60	2267	39.1	78.9
0-90	2872	49.5	100.0
90-120	1	0.0	0.0
90-130	1	0.0	0.0
90-150	1	0.0	0.0
90-180	1	0.0	0.0
0-180	2874	49.5	100.0

CANDLEPOWER			
Angle	End	45	Cross
0	987	987	987
5	983	984	
15	967	958	
25	914	906	
35	800	789	
45	662	663	
55	525	481	
65	339	320	
75	180	176	
85	67	69	
90	5	3	
95	0	0	
105	0	0	
115	0	0	
125	0	0	
135	0	0	
145	0	0	
155	0	0	
165	0	0	
175	0	0	
180	0	0	



Total Luminaire Optical Efficiency = 49.5%

COEFFICIENT OF UTILIZATION													
pfc	20					50					10		0
	80	70	30	70	50	30	50	30	50	30	50	30	0
pw	70	50	30	70	50	30	50	30	50	30	50	30	0
	RCR												
0	59	59	59	57	57	57	55	55	53	53	50	50	49
1	54	51	49	52	50	48	48	46	46	45	44	43	41
2	49	44	41	47	43	40	42	39	40	38	39	37	34
3	44	39	35	43	38	34	37	33	35	32	34	32	28
4	40	34	30	39	34	30	32	29	31	28	30	28	24
5	37	31	26	36	30	26	29	25	28	25	27	24	21
6	34	28	23	33	27	23	26	22	25	22	25	22	18
7	32	25	21	31	25	20	24	20	23	20	22	19	16
8	30	23	18	29	22	18	22	18	21	18	20	17	14
9	28	21	17	27	21	17	20	16	19	16	19	16	13
10	26	19	15	25	19	15	18	15	18	15	17	14	11

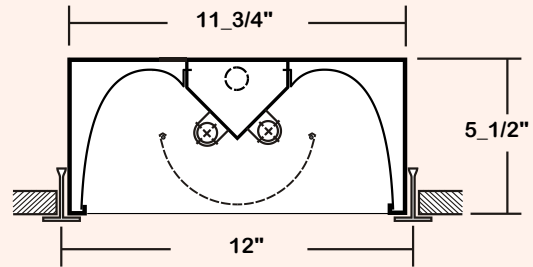
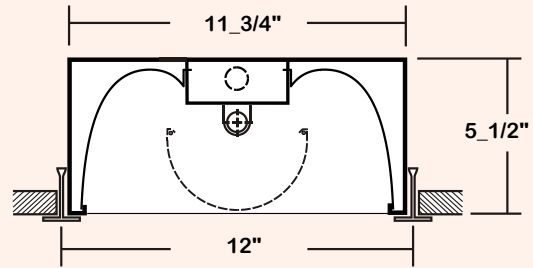


RECESSED



**GIC110 SERIES
Center Basket 1x4**

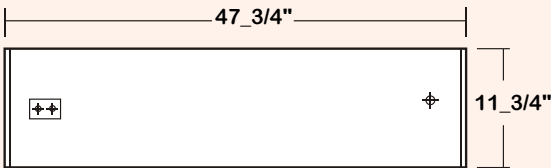
CROSS SECTION



BACKPLATE

ACCESS PLATE

7/8" K.O.

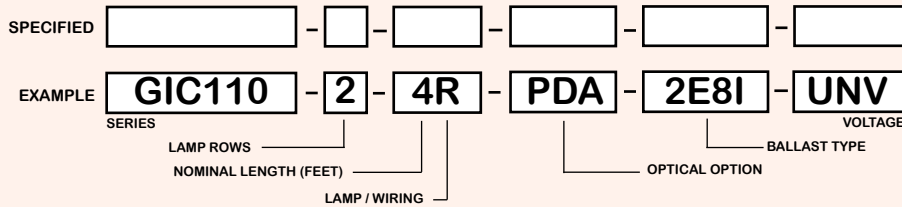


CATALOG NUMBER

	NOMINAL WIDTH X LENGTH	TOTAL LAMPS
GIC110-1-4M	1' X 4'	1
GIC110-2-4M	1' X 4'	2
GIC110-1-4R	1' X 4'	1
GIC110-2-4R	1' X 4'	2

Note: To Denote Specular Aluminum Cover Add "SR" To Beginning Of Catalog Number.

ORDERING GUIDE



NOTE: LAMP/WIR- M=Miniature Bi-Pin T5 R=Medium Bi-Pin T8

OPTIONS and ACCESSORIES

● **BALLAST OPTIONS***

	SUFFIX
Electronic T5	xE5
Electronic T5HO	xE5H
Electronic T8 Instant Start	xE8I
Electronic T8 Rapid Start	xE8R
Electronic T8HO	xE8H

x = Number of Lamps per Ballast

● **ELECTRICAL OPTIONS**

	SUFFIX
Emergency Battery Pack	*
External Line Fusing (HLR/GLR)	ELF

● **OPTICAL OPTIONS**

	SUFFIX
Perforated Shield/White Acrylic	PDA

*Refer to www.lalighting.com/resources for more information

SPECIFICATIONS

MADE IN THE U.S.A.

- **TYPE** Direct / indirect recessed mounted luminaires for inverted T-bar ceilings.
- **CONSTRUCTION** 22 ga. cold rolled steel housing. (20 ga. housing available as specified)
- **FINISH** Baked white polyester finish housing. (Powder coated finish available.)
- **OPTIC** Perforated center-mount metal light shield with polyethylene protecting trims, snap out for easy maintenance. White acrylic insert available.
- **REFLECTOR** Cold rolled steel reflectors, high reflectance, low gloss matte white powder coat finish.
- **WIRING** 120v 60Hz., 277v 60Hz., UNV (universal voltage 120v thru 277v.) or as otherwise specified.
- **LABELS** U.L. Listed. Compatible with UL Fire-Rated Ceiling Assemblies.

