

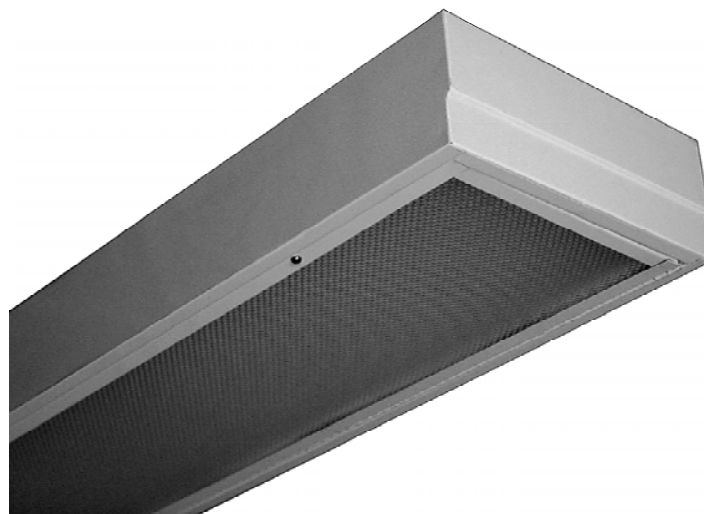


SECURITY

GSE110 SERIES



1X4, T-Bar Recessed Security Luminaire



- 1X4, T-Bar Recessed Security Luminaire
- For 1" or 1_1/2" T-Bar Ceiling
- Welded and Painted After Fabrication
- Full Length Piano Hinge and Captive Tamper Proof Screws
- Nominal .187 High Impact Clear Prismatic Acrylic Lens
- One Way Polyurethane Gasketed
- Suitable for Damp Locations
- Available with:
 - Fluorescent, LED and LED T8 (Internally Driven)
 - Variety of Lens
 - Emergency Battery Pack



Photometric Data and IES Files are Available on www.lalighting.com

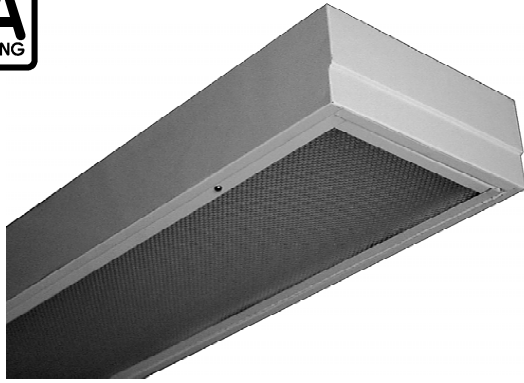


LOS ANGELES LIGHTING MFG. CO.

10141 OLNEY ST. / EL MONTE, CA 91731

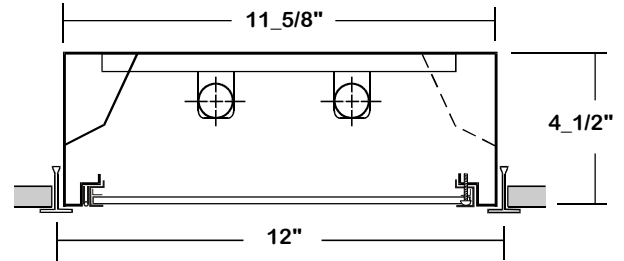
TEL : 626-454-8300 FAX : 626-454-8399

www.lalighting.com



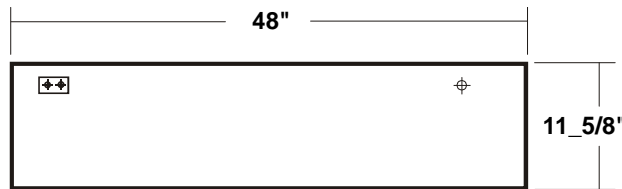
GSE110 SERIES

CROSS SECTION



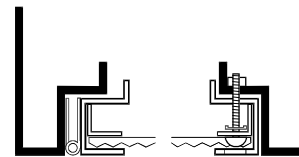
BACK PLATE

⊕ 7/8" OFFSET K.O. ⊕⊕ ACCESS PLATE



DOOR FRAME INFORMATION

CROSS SECTION



FINISHES
W - White Enamel
B - Black Enamel

EXPLANATION

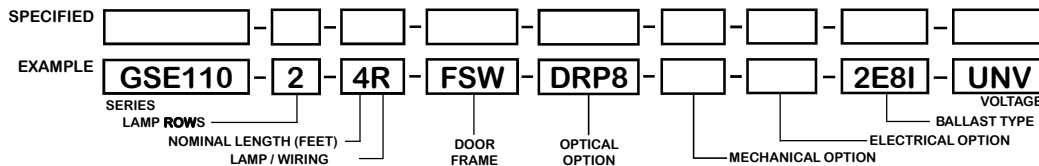
1. Continuous Piano Hinge.
2. Two Captive Tamper Proof Screws (Hex Socket With Post).
3. Inner Frame Lens Retainer Rail.

STYLES
FS - Flat Steel

CATALOG NUMBER

	NOMINAL WIDTH X LENGTH	TOTAL LAMPS		NOMINAL WIDTH X LENGTH	TOTAL LAMPS
GSE110-1-4M	1' X 4'	1	GSE110-1-4R	1' X 4'	1
GSE110-2-4M	1' X 4'	2	GSE110-2-4R	1' X 4'	2
GSE110-3-4M	1' X 4'	3	GSE110-3-4R	1' X 4'	3

ORDERING GUIDE



NOTE: LAMP/WIRING*
M= Miniature Bi-Pin T5
R = Medium Bi-Pin T8

OPTIONS AND ACCESSORIES

OPTICAL OPTIONS

- High Impact Clear Prismatic Acrylic .187
- High Impact Clear Prismatic Acrylic .125
- Clear Prismatic Polycarbonate .125

* Other Lens Available Upon Request

MECHANICAL OPTIONS

- Gasketing

SUFFIX

- DRP8
- DRP2
- PPC2

SUFFIX

- GSK*

ELECTRICAL OPTIONS

- Emergency Battery Pack
- External Line Fusing (HLR/GLR)

SUFFIX

- BP*
- ELF

BALLAST OPTIONS *

- Electronic T5
- Electronic T5HO
- Electronic T8 Instant Start
- Electronic T8 Rapid Start
- Electronic T8HO

SUFFIX

- xE5
- xE5H
- xE8I
- xE8R
- xE8H

x = Number of Lamps per Ballast

*Refer to www.lalighting.com/resources for more information

SPECIFICATIONS

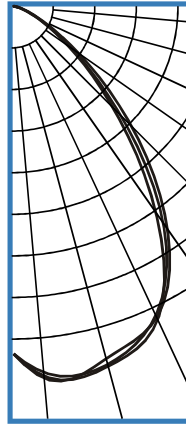
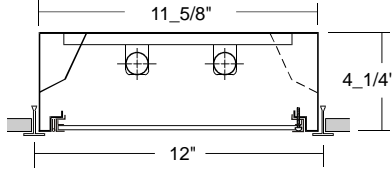
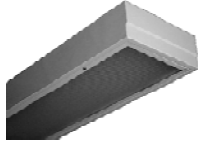
- TYPE** T-Bar recessed security luminaire. Design for use in public areas where vandalism may be a problem.
- CONSTRUCTION** 20 gauge cold rolled steel welded housing.
- FINISH** Baked white powder coated finish, minimum reflectance 90%, painted after fabrication.
- DOOR FRAME** 20 gauge cold rolled steel. Full length piano hinge and 2 captive tamper proof screws (hex socket with post). Inner frame lens retainer rail.
- GASKET** One way polyurethane gasketed standard. More options available.
- OPTIC** .187 high impact clear prismatic acrylic standard.
- WIRING** 120v 60Hz., 277v 60Hz., UNV (universal voltage 120v thru 277v.) or as otherwise specified.
- LABELS** U.L. Listed. Suitable for damp locations. Compatible with UL Fire-Rated Ceiling Assemblies.



PHOTOMETRIC DATA

GSE110-2-4R-FSW-DRP8-E8

TEST NO.=LA-T0488-1
 LAMP TYPE=FO32T8
 NO. OF LAMP=2
 LUMENS PER LAMP=2900
 WATTS PER LAMP=32
 BALLAST FACTOR=1
 PHOTOMETRY TYPE=C



CANDLEPOWER

ANGLE	END	45	CROSS
0	1578	1578	1578
5	1700	1671	1689
15	1652	1679	1688
25	1551	1538	1559
35	1214	1179	1117
45	742	669	621
55	337	301	286
65	121	110	104
75	36	31	30
85	5	4	3
90	1	0	0
95	0	0	0
105	0	0	0
115	0	0	0
125	0	0	0
135	0	0	0
145	0	0	0
155	0	0	0
165	0	0	0
175	0	0	0
180	0	0	0

ZONAL LUMEN SUMMARY

DEGREES	LUMENS	% LAMP	% FIXTURE
0-30	1351	23.3	44.5
0-40	2087	36.0	68.8
0-60	1884	49.7	95.1
0-90	3032	52.3	100.0
90-120	0	0.0	0
90-150	0	0.0	0
90-180	0	0.0	0
0-180	3032	52.3	100.0

Lumen Output = 3032 lumens
 Luminaire Efficiency = 52.3%

SPACING CRITERION

ALONG	ACROSS
1.26	1.21

This space is intentionally left blank.

This space is intentionally left blank.

This space is intentionally left blank.

