



# SECURITY

## GSE120 SERIES



### 2X2, T-Bar Recessed Security Luminaire



- 2X2, T-Bar Recessed Security Luminaire
- For 1" or 1\_1/2" T-Bar Ceiling
- Welded and Painted After Fabrication
- Full Length Piano Hinge and Captive Tamper Proof Screws
- Nominal .187 High Impact Clear Prismatic Acrylic Lens
- One Way Polyurethane Gasketed
- Suitable for Damp Locations
- Available with:
  - Fluorescent, LED and LED T8 (Internally Driven)
  - Variety of Lens
  - Emergency Battery Pack



Photometric Data and IES Files are Available on [www.lalighting.com](http://www.lalighting.com)

#### LOS ANGELES LIGHTING MFG. CO.

10141 OLNEY ST. / EL MONTE, CA 91731

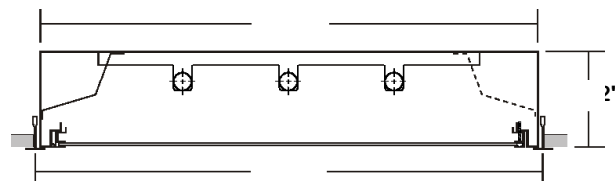
TEL : 626-454-8300 FAX : 626-454-8399

[www.lalighting.com](http://www.lalighting.com)



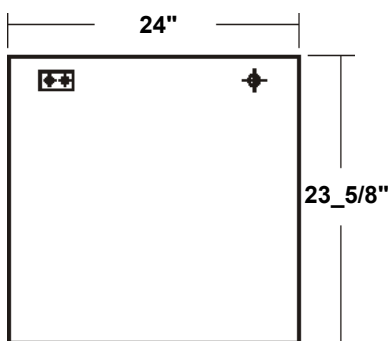
# GSE120 SERIES 2x2

## CROSS SECTION



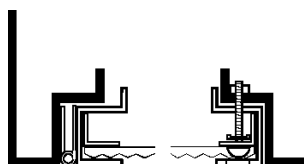
## BACK PLATE

- 7/8" OFFSET K.O.
- ACCESS PLATE



## DOOR FRAME INFORMATION

### CROSS SECTION



### EXPLANATION

- Continuous Piano Hinge.
- Two Captive Tamper Proof Screws (Hex Socket With Post).
- Inner Frame Lens Retainer Rail.

FS W

### FINISHES

- W - White Enamel
- B - Black Enamel

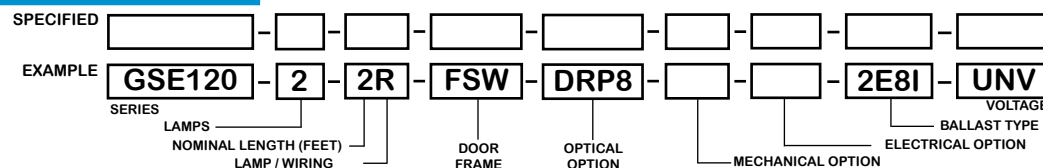
### STYLES

- FS - Flat Steel

## CATALOG NUMBER

	NOMINAL WIDTH X LENGTH	TOTAL LAMPS		NOMINAL WIDTH X LENGTH	TOTAL LAMPS		NOMINAL WIDTH X LENGTH	TOTAL LAMPS
GSE120-2-2M	2' X 2'	2	GSE120-2-2R	2' X 2'	2	GSE120-2-2RU1	2' X 2'	2
GSE120-3-2M	2' X 2'	3	GSE120-3-2R	2' X 2'	3	GSE120-3-2RU1	2' X 2'	3
GSE120-4-2M	2' X 2'	4	GSE120-4-2R	2' X 2'	4	GSE120-2-2RU6	2' X 2'	2

## ORDERING GUIDE



**NOTE: LAMP/WIRING\***  
 M = Miniature Bi-Pin T5  
 R = Medium Bi-Pin T8  
 RU1 = Medium Bi-Pin T8 U Shaped 1\_5/8" Spacing  
 RU6 = Medium Bi-Pin T8 U Shaped 6" Spacing

## OPTIONS AND ACCESSORIES

### OPTICAL OPTIONS

- High Impact Clear Prismatic Acrylic .187
- High Impact Clear Prismatic Acrylic .125
- Clear Prismatic Polycarbonate .125

\* Other Lens Available Upon Request

### MECHANICAL OPTIONS

- Gasketing

### SUFFIX

- DRP8
- DRP2
- PPC2

### SUFFIX

- GSK\*

### ELECTRICAL OPTIONS

- Emergency Battery Pack
- External Line Fusing (HLR/GLR)
- Radio Interference Filters
- Night Light

### SUFFIX

- BP\*
- ELF
- RIF
- NL\*

### BALLAST OPTIONS

- Electronic T5
- Electronic T5HO
- Electronic Step Dimming T5HO
- Electronic T8
- Electronic Step Dimming T8

### SUFFIX

- E5\*
- E5H
- ESDM5H
- E8\*
- ESDM8\*

\*See appropriate reference page

## SPECIFICATIONS

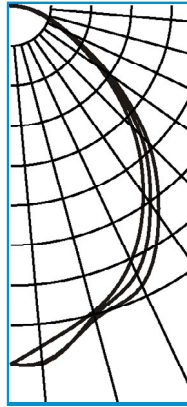
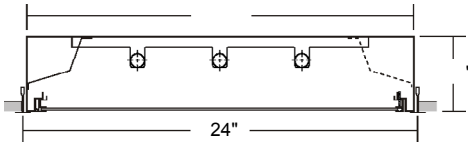
- TYPE** T-Bar recessed security luminaire. Design for use in public areas where vandalism may be a problem.
- CONSTRUCTION** 20 gauge cold rolled steel welded housing.
- FINISH** Baked white powder coated finish, minimum reflectance 90%, painted after fabrication.
- DOOR FRAME** 20 gauge cold rolled steel. Full length piano hinge and 2 captive tamper proof screws (hex socket with post). Inner frame lens retainer rail.
- GASKET** One way polyurethane gasketed standard. More options available.
- OPTIC** .187 high impact clear prismatic acrylic standard.
- WIRING** 120v 60Hz., 277v 60Hz., UNV (universal voltage 120v thru 277v.) or as otherwise specified.
- LABELS** U.L. Listed. Suitable for damp locations. Compatible with UL Fire-Rated Ceiling Assemblies.



**PHOTOMETRIC DATA**

**GSE120-3-2R-FSW-DRP8-E8**

TEST NO.=LA-T2052-1  
 LAMP TYPE=FO17T8  
 NO. OF LAMP=3  
 LUMENS PER LAMP=1350  
 WATTS PER LAMP=17  
 BALLAST FACTOR=1  
 PHOTOMETRY TYPE=C



**CANDLEPOWER**

ANGLE	END	45	CROSS
0	997	997	997
5	952	1000	996
15	882	894	903
25	787	824	859
35	640	674	713
45	477	510	540
55	300	314	335
65	163	169	177
75	82	88	96
85	23	25	29
90	1	2	2
95	0	0	0
105	0	0	0
115	0	0	0
125	0	0	0
135	0	0	0
145	0	0	0
155	0	0	0
165	0	0	0
175	0	0	0
180	0	0	0

**ZONAL LUMEN SUMMARY**

DEGREES	LUMENS	% LAMP	% FIXTURE
0-30	729	18.0	34.5
0-40	1153	28.5	54.5
0-60	1831	45.2	86.6
0-90	2114	52.2	100.0
90-120	0	0.0	0
90-150	0	0.0	0
90-180	0	0.0	0
0-180	2114	52.2	100.0

Lumen Output = 2114 lumens  
 Luminaire Efficiency = 52.2%

**SPACING CRITERION**

ALONG	ACROSS
1.09	1.17

This space is intentionally left blank.

This space is intentionally left blank.

This space is intentionally left blank.

