



SECURITY

GSE120 SERIES



2X4, T-Bar Recessed Security Luminaire



- 2X4, T-Bar Recessed Security Luminaire
- For 1" or 1_1/2" T-Bar Ceiling
- Welded and Painted After Fabrication
- Full Length Piano Hinge and Captive Tamper Proof Screws
- Nominal .187 High Impact Clear Prismatic Acrylic Lens
- One Way Polyurethane Gasketed
- Suitable for Damp Locations
- Available with:
 - Fluorescent, LED and LED T8 (Internally Driven)
 - Variety of Lens
 - Emergency Battery Pack



Photometric Data and IES Files are Available on www.lalighting.com

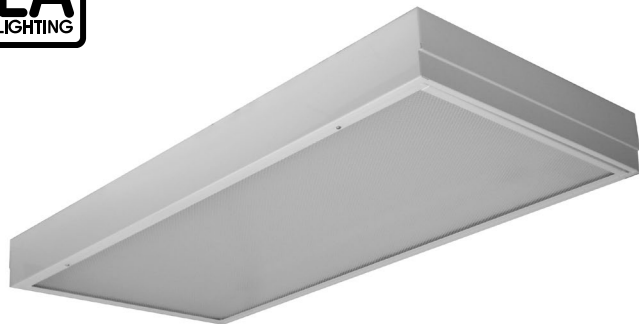


LOS ANGELES LIGHTING MFG. CO.

10141 OLNEY ST. / EL MONTE, CA 91731

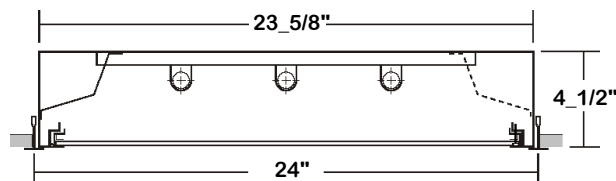
TEL : 626-454-8300 FAX : 626-454-8399

www.lalighting.com



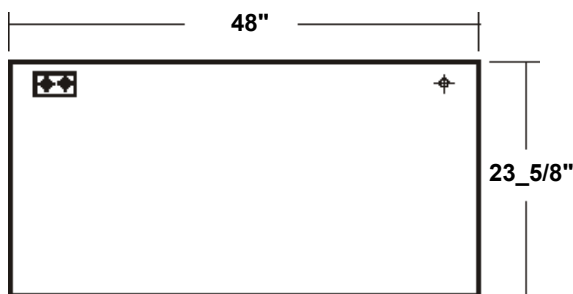
GSE120 SERIES 2x4

CROSS SECTION



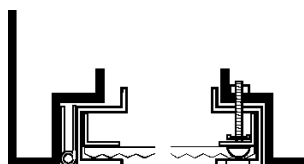
BACK PLATE

7/8" OFFSET K.O. ACCESS PLATE



DOOR FRAME INFORMATION

CROSS SECTION



FINISHES
W - White Enamel
B - Black Enamel

EXPLANATION

1. Continuous Piano Hinge.
2. Two Captive Tamper Proof Screws (Hex Socket With Post).
3. Inner Frame Lens Retainer Rail.

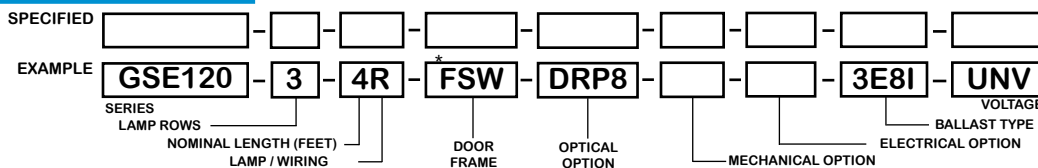
STYLES
FS - Flat Steel

CATALOG NUMBER

| | NOMINAL WIDTH X LENGTH | TOTAL LAMPS |
|-------------|------------------------|-------------|
| GSE120-2-4M | 2' X 4' | 2 |
| GSE120-3-4M | 2' X 4' | 3 |
| GSE120-4-4M | 2' X 4' | 4 |

| | NOMINAL WIDTH X LENGTH | TOTAL LAMPS |
|-------------|------------------------|-------------|
| GSE120-2-4R | 2' X 4' | 2 |
| GSE120-3-4R | 2' X 4' | 3 |
| GSE120-4-4R | 2' X 4' | 4 |

ORDERING GUIDE



NOTE: LAMP/WIRING*
M = Miniature Bi-Pin T5
R = Medium Bi-Pin T8

OPTIONS AND ACCESSORIES

OPTICAL OPTIONS

- High Impact Clear Prismatic Acrylic .187
- High Impact Clear Prismatic Acrylic .125
- Clear Prismatic Polycarbonate .125

* Other Lens Available Upon Request

MECHANICAL OPTIONS

- Gasketing

SUFFIX
DRP8
DRP2
PPC2

ELECTRICAL OPTIONS

- Emergency Battery Pack
- External Line Fusing (HLR/GLR)

SUFFIX
BP*
ELF

BALLAST OPTIONS*

- Electronic T5
- Electronic T5HO
- Electronic T8 Instant Start
- Electronic T8 Rapid Start
- Electronic T8HO

x = Number of Lamps per Ballast

SUFFIX
xE5
xE5H
xE8I
xE8R
xE8H

*Refer to www.lalighting.com/resources for more information

SPECIFICATIONS

- TYPE
- CONSTRUCTION
- FINISH
- DOOR FRAME
- GASKET
- OPTIC
- WIRING
- LABELS

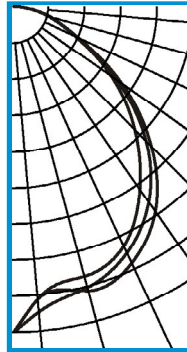
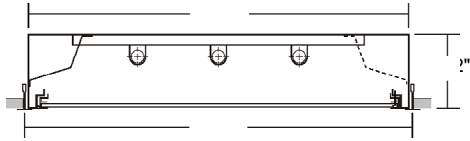
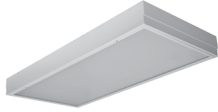
T-Bar recessed security luminaire. Design for use in public areas where vandalism may be a problem.
 20 gauge cold rolled steel welded housing.
 Baked white powder coated finish, minimum reflectance 90%, painted after fabrication.
 20 gauge cold rolled steel. Full length piano hinge and 2 captive tamper proof screws (hex socket with post).
 Inner frame lens retainer rail.
 One way polyurethane gasketed standard. More options available.
 .187 high impact clear prismatic acrylic standard.
 120v 60Hz., 277v 60Hz., UNV (universal voltage 120v thru 277v.) or as otherwise specified.
 U.L. Listed. Suitable for damp locations. Compatible with UL Fire-Rated Ceiling Assemblies.



PHOTOMETRIC DATA

GSE120-3-4R-FSW-DRP8-E8

TEST NO.=LA-T0491-1
 LAMP TYPE=FO32T8
 NO. OF LAMP=3
 LUMENS PER LAMP=2900
 WATTS PER LAMP=32
 BALLAST FACTOR=1
 PHOTOMETRY TYPE=C



CANDLEPOWER

| ANGLE | END | 45 | CROSS |
|-------|------|------|-------|
| 0 | 2306 | 2306 | 2306 |
| 5 | 2067 | 2164 | 2070 |
| 15 | 1974 | 2054 | 2084 |
| 25 | 1858 | 1912 | 1993 |
| 35 | 1558 | 1669 | 1751 |
| 45 | 1206 | 1318 | 1371 |
| 55 | 830 | 878 | 918 |
| 65 | 469 | 488 | 486 |
| 75 | 247 | 247 | 262 |
| 85 | 68 | 77 | 73 |
| 90 | 7 | 5 | 8 |
| 95 | 0 | 0 | 0 |
| 105 | 0 | 0 | 0 |
| 115 | 0 | 0 | 0 |
| 125 | 0 | 0 | 0 |
| 135 | 0 | 0 | 0 |
| 145 | 0 | 0 | 0 |
| 155 | 0 | 0 | 0 |
| 165 | 0 | 0 | 0 |
| 175 | 0 | 0 | 0 |
| 180 | 0 | 0 | 0 |

ZONAL LUMEN SUMMARY

| DEGREES | LUMENS | % LAMP | % FIXTURE |
|---------|--------|--------|-----------|
| 0-30 | 1670 | 19.2 | 31.4 |
| 0-40 | 2714 | 31.2 | 51.0 |
| 0-60 | 4509 | 51.8 | 84.8 |
| 0-90 | 5316 | 61.1 | 100.0 |
| 90-120 | 2 | 0.0 | 0 |
| 90-150 | 2 | 0.0 | 0 |
| 90-180 | 2 | 0.0 | 0 |
| 0-180 | 5318 | 61.1 | 100.0 |

Lumen Output = 5318 lumens
 Luminaire Efficiency = 61.1%

SPACING CRITERION

| ALONG | ACROSS |
|-------|--------|
| 1.11 | 1.20 |

This space is intentionally left blank.

This space is intentionally left blank.

This space is intentionally left blank.

