

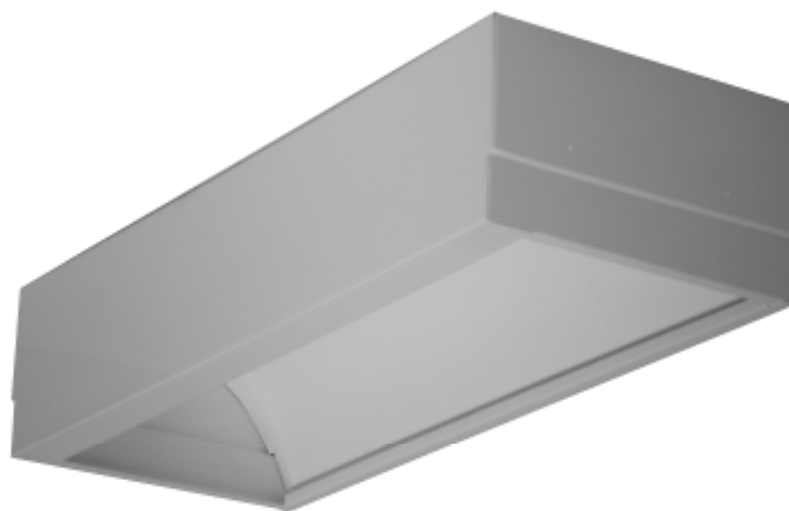


# ARCHITECTURAL

## GWW210 SERIES



### T-Bar Recessed Wall Wash Luminaire



- T-Bar Recessed Wall Wash Luminaire
- For 1" or 1\_1/2" T-Bar Ceiling
- Powder Coated Finish / Painted After Fabrication
- Removable Wiring Access Plate
- Suitable for Damp Locations
- Available with:

Fluorescent, LED and LED T8 (Internally Driven)  
 95% Enhanced Specular Aluminum Reflectors  
 Emergency Battery Pack



Photometric Data and IES Files are Available on [www.lalighting.com](http://www.lalighting.com)

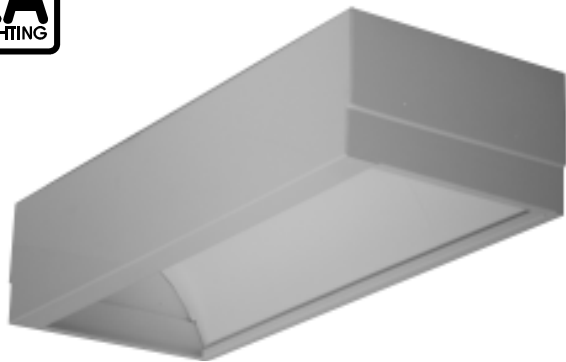


**LOS ANGELES LIGHTING MFG. CO.**

10141 OLNEY ST. / EL MONTE, CA 91731

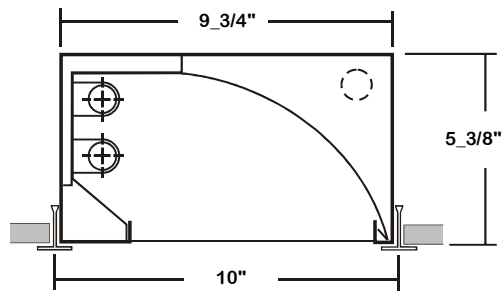
TEL : 626-454-8300 FAX : 626-454-8399

[www.lalighting.com](http://www.lalighting.com)



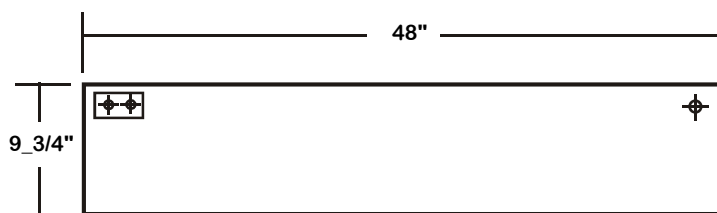
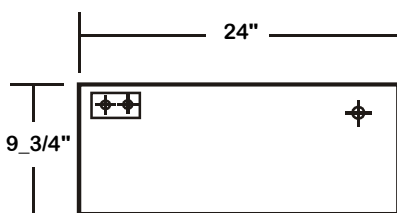
# GWW210 SERIES

## CROSS SECTION



## BACK PLATE

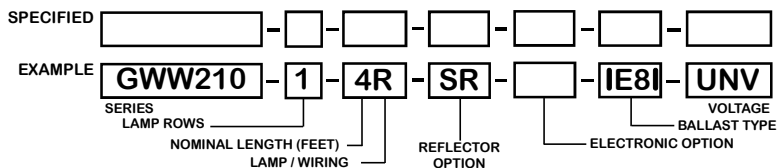
- ACCESS PLATE
- 7/8" K.O.



## CATALOG NUMBER

	NOMINAL LENGTH	TOTAL LAMPS		NOMINAL LENGTH	TOTAL LAMPS	
GWW210-1-2R	2'	1		GWW210-2-2R	2'	2
GWW210-1-4R	4'	1		GWW210-2-4R	4'	2
GWW210-1-2M	2'	1		GWW210-2-2M	2'	2
GWW210-1-4M	4'	1		GWW210-2-4M	4'	2

## ORDERING GUIDE



**NOTE: LAMP/WIRING\***  
 R= Medium Bi-Pin T8  
 M= Miniature Bi-Pin T5

## OPTIONS AND ACCESSORIES

### REFLECTOR OPTIONS

Specular Aluminum Reflector (95%)	SUFFIX	SR
White Reflector	SUFFIX	WR

### ELECTRICAL OPTIONS

Emergency Battery Pack	SUFFIX	BP*
External Line Fusing (HLR/GLR)	SUFFIX	ELF

### BALLAST OPTIONS\*

Electronic T5	SUFFIX	xE5
Electronic T5HO	SUFFIX	xE5H
Electronic T8 Instant Start	SUFFIX	xE8I
Electronic T8 Rapid Start	SUFFIX	xE8R
Electronic T8HO	SUFFIX	xE8H
x = Number of Lamps per Ballast		

\*Refer to [www.lalighting.com/resources](http://www.lalighting.com/resources) for more information

## SPECIFICATIONS

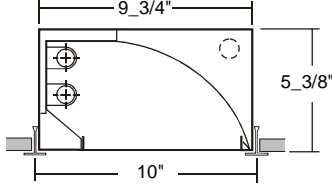
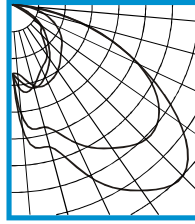
- TYPE** Recessed wall wash luminaire. For inverted T-Bar installation.
- CONSTRUCTION** 22 ga. cold rolled steel welded housing.
- FINISH** Back white powder coated finish, minimum reflectance 90%, painted after fabrication.
- REFLECTOR** Specular aluminum reflector standard, 95% reflectance. (White reflector available) 120v
- WIRING** 60Hz., 277v 60Hz., UNV (universal voltage 120V - 277V.) or as otherwise specified.
- LABELS** U.L. Listed. Suitable for damp locations. Compatible with UL Fire-Rated Ceiling Assemblies.



**PHOTOMETRIC DATA**

**GWW210-2-4R-SR-E8**

TEST NO.=LA-T2087  
 LAMP TYPE=FO32T8  
 NO. OF LAMP=2  
 LUMENS PER LAMP=2900  
 WATTS PER LAMP=32  
 BALLAST FACTOR=1  
 PHOTOMETRY TYPE=C



**CANDLEPOWER**

ANGLE	0	45	90	135	180
0	551	551	551	551	551
5	1029	910	561	610	679
15	1184	1017	676	691	667
25	1550	1231	688	625	556
35	1823	1405	637	520	483
45	1940	1524	550	392	323
55	1639	1437	482	277	259
65	1112	1107	384	136	21
75	593	578	253	26	4
85	82	135	83	7	4
90	0	0	2	0	0
95	0	0	0	0	0
105	0	0	0	0	0
115	0	0	0	0	0
125	0	0	0	0	0
135	0	0	0	0	0
145	0	0	0	0	0
155	0	0	0	0	0
165	0	0	0	0	0
175	0	0	0	0	0
180	0	0	0	0	0

**ZONAL LUMEN SUMMARY**

DEGREES	LUMENS	% LAMP	% FIXTURE
0-30	720	12.4	19.9
0-40	1303	22.5	36.1
0-60	2705	46.6	74.9
0-90	3610	62.2	100.0
90-120	0	0.0	0.0
90-150	0	0.0	0.0
90-180	0	0.0	0.0
0-180	3610	62.2	100.0

Lumen Output = 3610 lumens  
 Luminaire Efficiency = 62.2%

**SPACING CRITERION**

ALONG	ACROSS
2.97	1.63

This space is intentionally left blank.

This space is intentionally left blank.

This space is intentionally left blank.

