

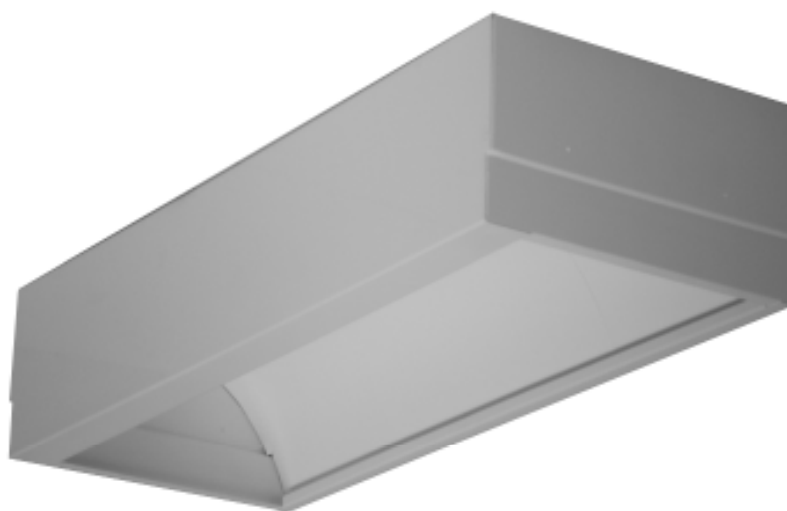


ARCHITECTURAL

GWW210 SERIES



T-Bar Recessed Wall Wash Luminaire



- T-Bar Recessed Wall Wash Luminaire
- For 1" or 1_1/2" T-Bar Ceiling
- Powder Coated Finish / Painted After Fabrication
- Removable Wiring Access Plate
- Row Mountable
- Suitable for Damp Locations
- Available with:
 - Fluorescent, LED and LED T8 (Internally Driven)
 - 95% Enhanced Specular Aluminum Reflectors
 - Emergency Battery Pack



Photometric Data and IES Files are Available on www.lalighting.com



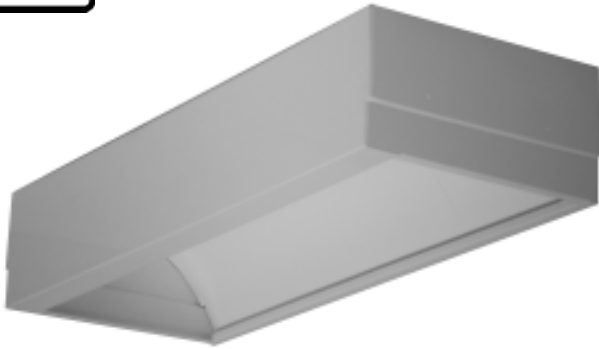
LOS ANGELES LIGHTING MFG. CO.

10141 OLNEY ST. / EL MONTE, CA 91731

TEL : 626-454-8300 FAX : 626-454-8399

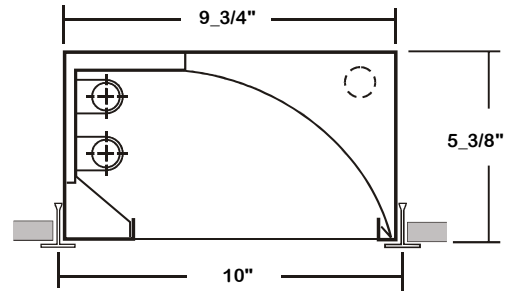
www.lalighting.com

ARCHITECTURAL - LED T8 (Internally Driven)



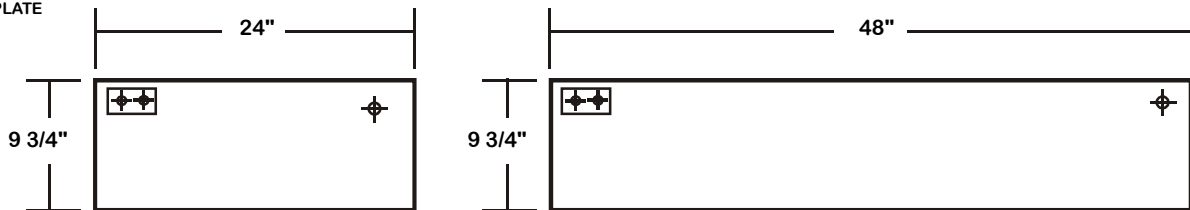
GWW210 SERIES - LED T8

CROSS SECTION



BACK PLATE

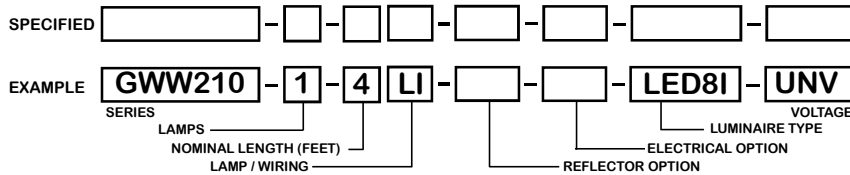
- ACCESS PLATE
- 7/8" K.O.



CATALOG NUMBER

	NOMINAL LENGTH	TOTAL MODULES
GWW210-1-2Lx	2'	1
GWW210-1-4Lx	4'	1
GWW210-2-2Lx	2'	2
GWW210-2-4Lx	4'	2

ORDERING GUIDE



LAMP / WIRING

LI = LED T8 internal driver light tube.
Both ends powered.
Shunted sockets used.



LR = LED T8 internal driver light tube.
Single end powered.
Non-shunted sockets used.



OPTIONS AND ACCESSORIES

REFLECTOR OPTIONS

- Specular Aluminum Reflector
- White Aluminum Reflector

SUFFIX

- SR
- WR

*See appropriate reference page

SPECIFICATIONS

- TYPE** Recessed wall wash luminaire for LED T8 internal driver light tube(s)**. For inverted T-Bar installation.
- CONSTRUCTION** 22 gauge cold rolled steel welded housing.
- FINISH** Baked white powder coated finish, minimum reflectance 90%, painted after fabrication.
- REFLECTOR** Enhanced aluminum reflectors, 95% reflectance. High reflectance white aluminum reflector available.
- WIRING** Operated LED T8 internal driver light tube(s)**.
- LABELS** Suitable for damp locations. Compatible with UL Fire-Rated Ceiling Assemblies.

** Lamp(s) by others.

