



BAYLIGHTER™

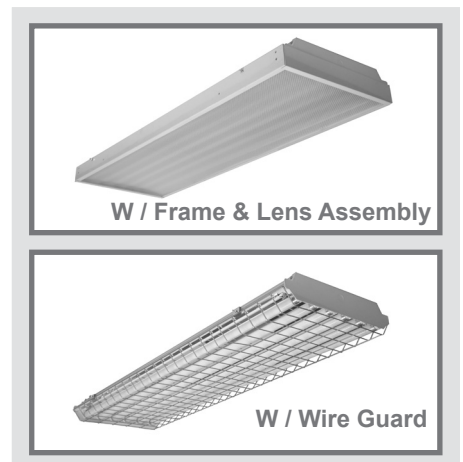
HBN200 SERIES



High Bay Luminaire



- High Bay Luminaire
- Quarter Turn Rotary Locking Sockets
- Removable Wiring Access Plate
- Stem, Cable or Chain Mountable
- Suitable for Damp Locations
- Available with:
 - Fluorescent, LED and LED T8 (Internally Driven)
 - 11ga. Wire Guard
 - Frame & Lens Assembly (Available in 4' Fixture Only)
 - 95% Enhanced Specular Aluminum Reflectors
 - Sensor
 - Emergency Battery Pack



Photometric Data and IES Files are Available on www.lalighting.com



LOS ANGELES LIGHTING MFG. CO.

10141 OLNEY ST. / EL MONTE, CA 91731

TEL : 626-454-8300 FAX : 626-454-8399

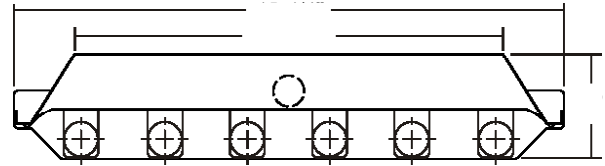
www.lalighting.com

BAYLIGHTER™ - LED T8 (Internally Driven)

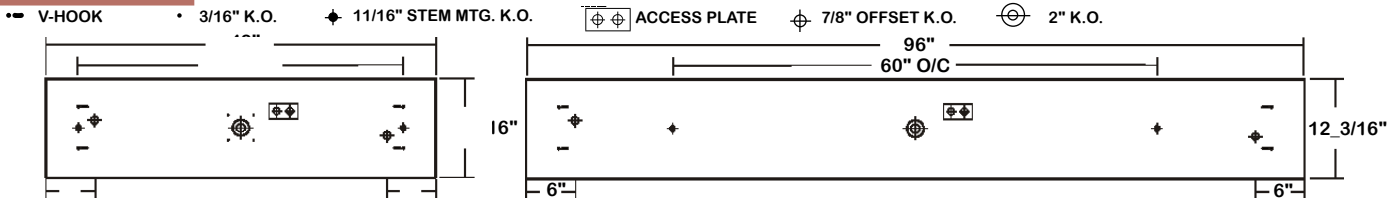


HBN200 SERIES - LED T8

CROSS SECTION



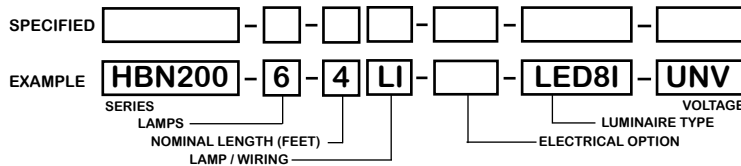
BACK PLATE



CATALOG NUMBER

	NOMINAL LENGTH	TOTAL MODULES		NOMINAL LENGTH	TOTAL MODULES
HBN200-3-4Lx	4'	3	HBN200-5-4Lx	4'	5
HBN200-3-8LxT	8'	6	HBN200-5-8LxT	8'	10
HBN200-4-4Lx	4'	4	HBN200-6-4Lx	4'	6
HBN200-4-8LxT	8'	8	HBN200-6-8LxT	8'	12

ORDERING GUIDE



TS2 - LED Luminaire On/Off Safety Switch



- Easily accessible on exterior of wire way.
- Allows individual fixture to be switched ON/OFF during re-lamping or Maintenance.

- Prevents damage to lamp and electrical shock during lamping and re-lamping.
- Allows safe entry to wire way channel where power connector can be disconnected for maintenance to fixture.

LAMP / WIRING

LI = LED T8 internal driver light tube.
 Both ends powered.
 Shunted sockets used.



LR = LED T8 internal driver light tube.
 Single end powered.
 Non-shunted sockets used.



OPTIONS AND ACCESSORIES

- **ELECTRICAL OPTIONS**
- LED Luminaire ON/OFF Safety Switch
- Motion Sensor

SUFFIX
 TS2
 MS

- **ACCESSORIES**
- Wire Guard - 11 Ga.
- Fixture Suspension System
- Ceiling Spacer
- 6" Leg Height V-Hook

CAT. NO.
 WG11-HBN200
 *
 *
 V6

*See appropriate reference page

** Lamp(s) by others.

SPECIFICATIONS

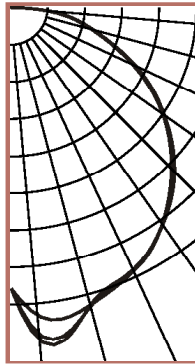
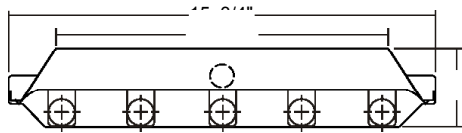
- **TYPE** High bay luminaire for surface, pendant, or chain mounting applications, for LED T8 internally driven light tube(s)**.
- **CONSTRUCTION** 22 ga. die formed cold rolled steel housing with louvered vents for heat removal. Quarter turn rotary locking lampholders standard. (20 ga. C.R.S. and .040 aluminum housing available as specified).
- **FINISH** Baked white polyester finish, minimum reflectance 86%.
- **REFLECTOR** 24 ga. pre-paint cold rolled steel flat white reflector, minimum reflectance 86%.
- **WIRING** Operate LED T8 internally driven light tube(s)**.
- **LABELS** Suitable for damp locations.



PHOTOMETRIC DATA

HBN200-5-4Lx-FR-LED8x-UNV

TEST NO.=LA-T2217
LAMP TYPE=LED T8 Internally Driven Light Tube*
NO. OF LAMP=5
LUMENS PER LAMP=1700
WATTS PER LAMP=18.5
PHOTOMETRY TYPE=C
 * Test with major manufacturer's LED T8 light tube(s), consult L.A. Lighting for details.



CANDLEPOWER

ANGLE	END	45	CROSS
0	2361	2361	2361
5	2594	2756	2805
15	2580	2588	2578
25	2435	2425	2436
35	2217	2210	2210
45	1936	1906	2898
55	1562	1561	1546
65	1138	1146	1119
75	705	697	692
85	303	294	289
90	21	14	14
95	0	0	0
105	0	0	0
115	0	0	0
125	0	0	0
135	0	0	0
145	0	0	0
155	0	0	0
165	0	0	0
175	0	0	0
180	0	0	0

ZONAL LUMEN SUMMARY

DEGREES	LUMENS	% LAMP	% FIXTURE
0-30	2116	24.9	24.9
0-40	3505	41.2	41.2
0-60	6383	75.1	75.1
0-90	8495	99.9	99.9
90-120	4	0.1	0.1
90-150	4	0.1	0.1
90-180	4	0.1	0.1
0-180	8499	100.0	100

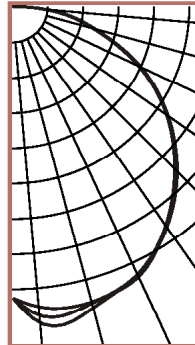
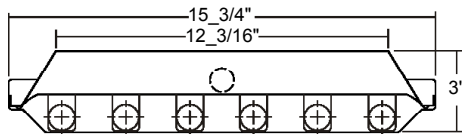
Lumen Output = 8499 lumens
 Luminaire Efficiency = 100.0%

SPACING CRITERION

ALONG	ACROSS
1.43	1.43

HBN200-6-4Lx-FR-LED8x-UNV

TEST NO.=LA-T2216
LAMP TYPE=LED T8 Internally Driven Light Tube*
NO. OF LAMP=6
LUMENS PER LAMP=1700
WATTS PER LAMP=18.5
PHOTOMETRY TYPE=C
 * Test with major manufacturer's LED T8 light tube(s), consult L.A. Lighting for details.



CANDLEPOWER

ANGLE	END	45	CROSS
0	2912	2912	2912
5	3011	3098	3174
15	3051	3063	3109
25	2944	2969	2943
35	2675	2655	2655
45	2312	2300	2275
55	1879	1882	1863
65	1399	1381	1374
75	837	838	820
85	337	323	313
90	31	17	16
95	0	0	0
105	0	0	0
115	0	0	0
125	0	0	0
135	0	0	0
145	0	0	0
155	0	0	0
165	0	0	0
175	0	0	0
180	0	0	0

ZONAL LUMEN SUMMARY

DEGREES	LUMENS	% LAMP	% FIXTURE
0-30	2533	24.8	24.8
0-40	4204	41.2	41.2
0-60	7667	75.2	75.2
0-90	10193	99.9	99.9
90-120	6	0.1	0.1
90-150	6	0.1	0.1
90-180	6	0.1	0.1
0-180	10198	100.0	100.0

Lumen Output = 10198 lumens
 Luminaire Efficiency = 100.0%

SPACING CRITERION

ALONG	ACROSS
1.40	1.40

This space is intentionally left blank.

This space is intentionally left blank.

