



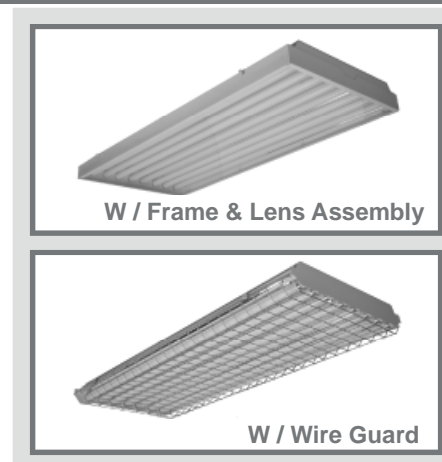
BAYLIGHTER™

HBN300 SERIES

High Bay Luminaire



- High Bay Luminaire
- Quarter Turn Rotary Locking Sockets
- Removable Wiring Access Plate
- Stem, Cable or Chain Mountable
- Suitable for Damp Locations
- Available with:
 - Fluorescent, LED and LED T8 (Internally Driven)
 - 11ga. Wire Guard
 - Frame & Lens Assembly (Available in 4' Fixture Only)
 - 95% Enhanced Specular Aluminum Reflectors
 - Sensor
 - Emergency Battery Pack



Photometric Data and IES Files are Available on www.lalighting.com

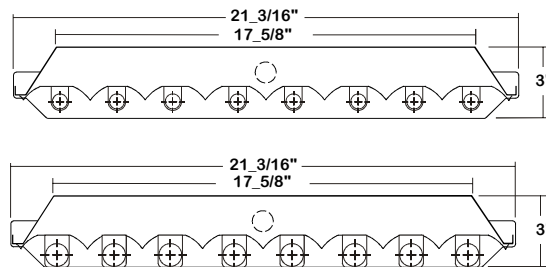


LOS ANGELES LIGHTING MFG. CO.
 10141 OLNEY ST. / EL MONTE, CA 91731
TEL : 626-454-8300 FAX : 626-454-8399
www.lalighting.com



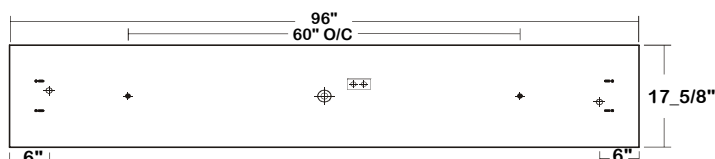
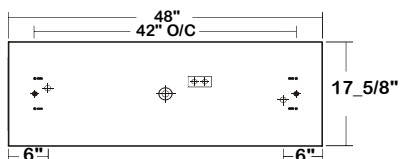
HBN300 SERIES

CROSS SECTION



BACK PLATE

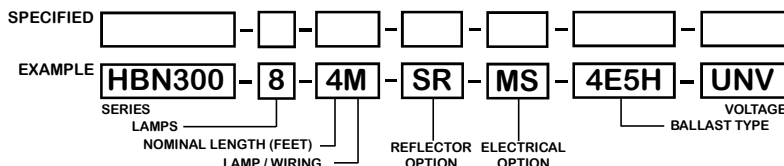
- V-HOOK
- ◆ 11/16" STEM MTG. K.O.
- ⊕ ACCESS PLATE
- ⊕ 7/8" OFFSET K.O.
- ⊕ 2" K.O.



CATALOG NUMBER

	NOMINAL LENGTH	TOTAL LAMPS
HBN300-8-4M	4'	8
HBN300-8-8MT	8'	16
HBN300-8-4R	4'	8
HBN300-8-8RT	8'	16

ORDERING GUIDE



NOTE: LAMP/WIRING* M = Miniature Bi-Pin T5 MT = Miniature Bi-Pin T5, Tandem Wiring
 R = Medium Bi-Pin T8 RT = Medium Bi-Pin T8, Tandem Wiring

OPTIONS AND ACCESSORIES

REFLECTOR OPTIONS	SUFFIX	BALLAST OPTIONS	SUFFIX	ACCESSORIES	CAT. NO.
Specular Aluminum Reflector (95%)	SR	Electronic T5	E5*	Wire Guard - 11 Ga.	WG11-HBN300
White Aluminum Reflector (90%)	WR	Electronic T5HO	E5H	Fixture Suspension System	*
		Electronic Step Dimming T5HO	ESDM5H	Ceiling Spacer	*
		Electronic T8	E8*	6" Leg Height V-Hook	V6
		Electronic Step Dimming T8	ESDM8*	Frame with Clear Acrylic	F/CA-HBN300**
				Frame with Clear Prismatic Acrylic	F/PA-HBN300**

ELECTRICAL OPTIONS SUFFIX

- Emergency Battery Pack BP*
- External Line Fusing (HLR/GLR) ELF
- Radio Interference Filters RIF
- Motion Sensor MS

Note:
 *See appropriate reference page
 ** For 4' fixture only. Other lenses available upon request.
 Wire guard (WG11-HBN100) is not valid when frame & lens assembly is specified.

SPECIFICATIONS

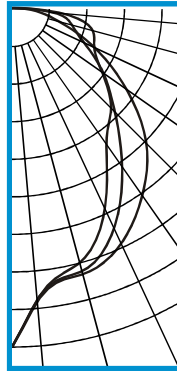
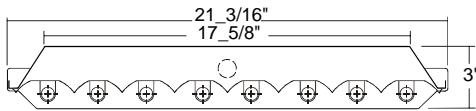
- **TYPE** High bay luminaire for surface, pendant, or chain mounting. Must be spaced a minimum of 1½" from ceiling when surface mounted with T5HO lamp.
- **CONSTRUCTION** 22 ga. die formed cold rolled steel housing with louvered vents for heat removal. Quarter turn rotary locking lampholders standard. (20 ga. C.R.S. and .040 aluminum housing available as specified).
- **REFLECTOR** Enhanced specular aluminum reflector standard, 95% reflectance. (White aluminum reflector available).
- **WIRE GUARD** 11ga. chrome epoxy powder coated.
- **FRAME & LENS** Die formed cold rolled steel frame with lay-in lens, two safety thumb screws on one side of the frame. Extensive variety of lenses available.
- **FINISH** Baked white polyester finish, minimum reflectance 86%.
- **WIRING** 120v 60Hz., 277v 60Hz., UNV (universal voltage 120v thru 277v.) or as otherwise specified.
- **LABELS** U.L. Listed. Suitable for damp locations.



PHOTOMETRIC DATA

HBN300-8-4M-SR-E5H

TEST NO.=LA-T2097
 LAMP TYPE=F54T5HO
 NO. OF LAMP=8
 LUMENS PER LAMP=5000
 WATTS PER LAMP=54
 BALLAST FACTOR=1
 PHOTOMETRY TYPE=C



CANDLEPOWER

ANGLE	END	45	CROSS
0	17243	17243	17243
5	14968	14876	14867
15	14031	13870	13405
25	13191	12304	11168
35	11562	9736	8349
45	9631	7343	7110
55	7006	5591	5521
65	4467	3939	4588
75	2280	3093	4192
85	885	1770	2199
90	87	275	416
95	0	37	94
105	0	0	0
115	0	0	0
125	0	0	0
135	0	0	0
145	0	0	0
155	0	0	0
165	0	0	0
175	0	0	0
180	0	0	0

ZONAL LUMEN SUMMARY

DEGREES	LUMENS	% LAMP	% FIXTURE
0-30	11012	27.5	29.2
0-40	17197	43.0	45.6
0-60	28600	71.5	75.9
0-90	37575	93.9	99.7
90-120	107	0.3	0.3
90-150	107	0.3	0.3
90-180	107	0.3	0.3
0-180	37681	94.2	100.0

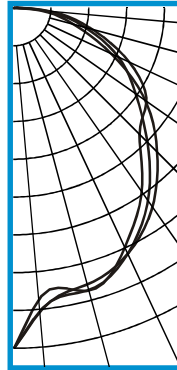
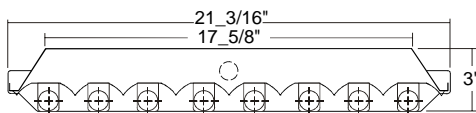
Lumen Output = 37681 lumens
 Luminaire Efficiency = 94.2%

SPACING CRITERION

ALONG	ACROSS
1.07	0.89

HBN300-8-4R-SR-E8

TEST NO.=LA-T2111
 LAMP TYPE=FO32T8
 NO. OF LAMP=8
 LUMENS PER LAMP=2900
 WATTS PER LAMP=32
 BALLAST FACTOR=1
 PHOTOMETRY TYPE=C



CANDLEPOWER

ANGLE	END	45	CROSS
0	7919	7919	7919
5	7084	7061	6787
15	6653	6791	6806
25	6293	6289	6121
35	5625	5439	5187
45	4706	4382	4130
55	3721	3450	3759
65	2477	2672	2948
75	1413	1691	1866
85	567	709	819
90	44	131	215
95	1	44	103
105	0	3	17
115	0	0	0
125	0	0	0
135	0	0	0
145	0	0	0
155	0	0	0
165	0	0	0
175	0	0	0
180	0	0	0

ZONAL LUMEN SUMMARY

DEGREES	LUMENS	% LAMP	% FIXTURE
0-30	5482	23.6	26.6
0-40	8888	38.3	43.1
0-60	15521	66.9	75.2
0-90	20564	88.6	99.6
90-120	81	0.3	0.4
90-150	81	0.3	0.4
90-180	81	0.3	0.4
0-180	20645	89.0	100.0

Lumen Output = 20645 lumens
 Luminaire Efficiency = 89.0%

SPACING CRITERION

ALONG	ACROSS
1.12	1.07

This space is intentionally left blank.

This space is intentionally left blank.

