



BAYLIGHTER™

HBS100 SERIES Medium / Low Bay Luminaire



- Medium / Low Bay Open Strip Luminaire
- Quarter Turn Rotary Locking Sockets
- Removable Wiring Access Plate
- Stem, Cable or Chain Mountable
- Suitable for Damp Locations
- Available with:
 - Fluorescent, LED and LED T8 (Internally Driven)
 - 95% Enhanced Specular Aluminum Reflectors
 - Sensor
 - Emergency Battery Pack
 - 11ga. or 14ga. Wire Guard
 - Die Cast Hub for 3/4" Pipe



LOS ANGELES LIGHTING MFG. CO.

10141 OLNEY ST. / EL MONTE, CA 91731

TEL : 626-454-8300 FAX : 626-454-8399

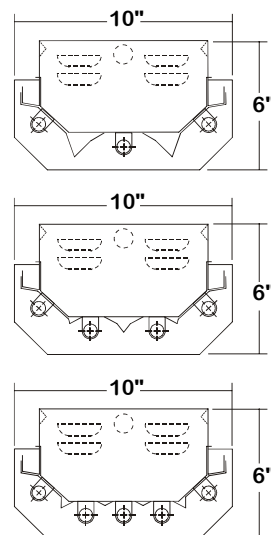
www.lalighting.com

BAYLIGHTER™ - Fluorescent



HBS100 SERIES

CROSS SECTION



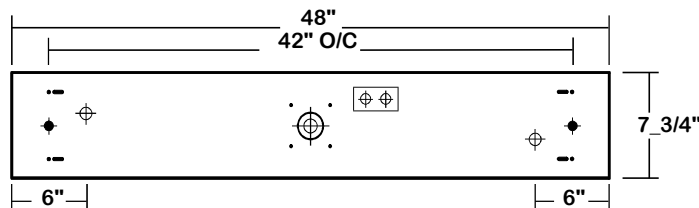
● 3 PIECE SPECULAR ALUMINUM REFLECTOR .
CENTER PIECE SECURED WITH QUARTER TURN
FASTENERS FOR EASE OF MAINTENANCE.

CATALOG NUMBER

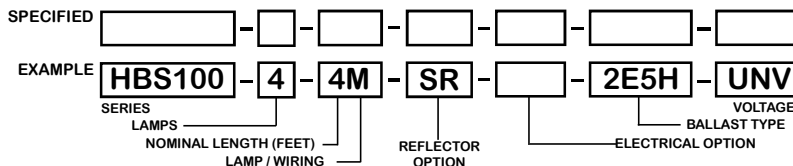
	NOMINAL LENGTH	TOTAL LAMPS
HBS100-3-4M	4'	3
HBS100-4-4M	4'	4
HBS100-5-4M	4'	5
HBS100-3-4R	4'	3
HBS100-4-4R	4'	4
HBS100-5-4R	4'	5

BACK PLATE

- V-HOOK
- 3/16" K.O.
- ◆ 11/16" STEM MTG. K.O.
- ⊕ 7/8" OFFSET K.O.
- ⊕ 2" K.O.
- ⊕ ACCESS PLATE



ORDERING GUIDE



NOTE: LAMP/WIRING* M= Miniature Bi-Pin T5
R = Medium Bi-Pin T8

OPTIONS AND ACCESSORIES

● REFLECTOR OPTIONS	SUFFIX	● BALLAST OPTIONS	SUFFIX	● ACCESSORIES	CAT.NO.
Specular Aluminum Reflector (95%)	SR	Electronic T5	E5*	Wire Guard - 11 Ga.	WG11-HBS100
White Aluminum Reflector (90%)	WR	Electronic T5HO	E5H	Wire Guard - 14 Ga.	WG14-HBS100
● ELECTRICAL OPTIONS	SUFFIX	Electronic Step Dimming T5HO	ESDM5H	Fixture Suspension System	*
Emergency Battery Pack	BP*	Electronic T8	E8*	Ceiling Spacer	*
External Line Fusing (HLR/GLR)	ELF	Electronic Step Dimming T8	ESDM8*	6" Leg Height V-Hook	V6
Radio Interference Filters	RIF			Die Cast Hub For 3/4" Pipe	HUB
Motion Sensor	MS				

*See appropriate reference page

SPECIFICATIONS

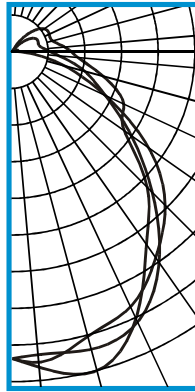
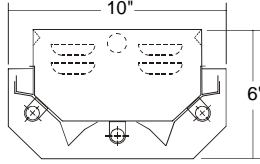
- TYPE: Medium or low bay open strip for surface, pendant, or chain mounting. Must be spaced a minimum of 1 1/2" from ceiling when surface mounted.
- CONSTRUCTION: 22 gauge cold rolled steel housing with louvered vents on each side for heat removal. Quarter turn rotary locking lampholders standard. (20 GA. housing available as specified)
- FINISH: Baked white polyester finish , minimum reflectance 86%. (Powder coated finish available.)
- REFLECTOR: Enhanced aluminum reflectors, 95% reflectance. High reflectance white aluminum reflector available.
- WIRE GUARDS: Chrome epoxy powder coated.
- WIRING: 120v 60Hz., 277v 60Hz., UNV (universal voltage 120v thru 277v.) or as otherwise specified. Multiple levels of switching available as specified.
- LABELS: U.L. Listed. Suitable for damp locations.



PHOTOMETRIC DATA

HBS100-3-4M-SR-E5H

TEST NO.=LA-T0615
 LAMP TYPE=F54T5HO
 NO. OF LAMP=3
 LUMENS PER LAMP=5000
 WATTS PER LAMP=54
 BALLAST FACTOR=1
 PHOTOMETRY TYPE=C



CANDLEPOWER

ANGLE	END	45	CROSS
0	4203	4203	4203
5	4270	4163	4341
15	4029	4217	4519
25	3845	4076	4015
35	3427	3504	3200
45	2957	2702	2606
55	2266	1978	1862
65	1385	1394	1681
75	730	1019	1280
85	233	642	899
90	103	520	806
95	78	442	721
105	77	372	570
115	39	379	557
125	4	320	544
135	0	174	404
145	0	57	195
155	0	2	24
165	0	0	0
175	0	0	0
180	0	0	0

ZONAL LUMEN SUMMARY

DEGREES	LUMENS	% LAMP	% FIXTURE
0-30	3460	23.1	24.1
0-40	5602	37.3	39.1
0-60	9538	63.6	66.5
0-90	12688	84.6	88.5
90-120	1181	7.9	8.2
90-150	1642	10.9	11.5
90-180	1645	11.0	11.5
0-180	14333	95.6	100.0

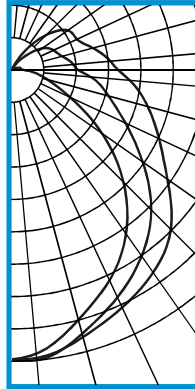
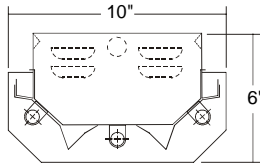
Lumen Output = 14333 lumens
 Luminaire Efficiency = 95.6%

SPACING CRITERION

ALONG	ACROSS
1.28	1.24

HBS100-3-4M-WR-E5H

TEST NO.=LA-T0634
 LAMP TYPE=F54T5HO
 NO. OF LAMP=3
 LUMENS PER LAMP=5000
 WATTS PER LAMP=54
 BALLAST FACTOR=1
 PHOTOMETRY TYPE=C



CANDLEPOWER

ANGLE	END	45	CROSS
0	3656	3656	3656
5	3321	3377	3317
15	3246	3237	3398
25	2995	3126	3175
35	2683	2871	2952
45	2298	2517	2663
55	1810	2017	2098
65	1281	1549	1849
75	741	1140	1431
85	316	756	1047
90	135	643	955
95	110	576	888
105	84	498	794
115	41	418	683
125	8	344	602
135	0	187	437
145	0	62	198
155	0	2	26
165	0	0	0
175	0	0	0
180	0	0	0

ZONAL LUMEN SUMMARY

DEGREES	LUMENS	% LAMP	% FIXTURE
0-30	2689	17.9	19.7
0-40	4475	29.8	32.8
0-60	8192	54.6	60.0
0-90	11665	77.8	85.4
90-120	1485	9.9	10.9
90-150	1983	13.2	14.5
90-180	1987	13.2	14.5
0-180	13651	91.0	100.0

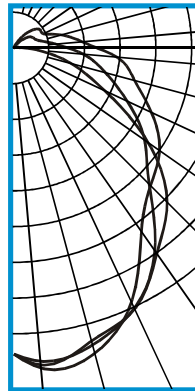
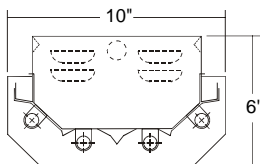
Lumen Output = 13651 lumens
 Luminaire Efficiency = 91.0%

SPACING CRITERION

ALONG	ACROSS
1.16	1.25

HBS100-4-4M-SR-E5H

TEST NO.=LA-T0612
 LAMP TYPE=F54T5HO
 NO. OF LAMP=4
 LUMENS PER LAMP=5000
 WATTS PER LAMP=54
 BALLAST FACTOR=1
 PHOTOMETRY TYPE=C



CANDLEPOWER

ANGLE	END	45	CROSS
0	5237	5237	5237
5	5447	5382	5501
15	5180	5252	5398
25	4915	4898	4776
35	4271	4207	3807
45	3707	3268	3313
55	2790	2727	3042
65	1700	2133	2593
75	1006	1619	2136
85	383	1185	1764
90	180	926	1418
95	91	727	1181
105	71	470	855
115	37	381	567
125	7	332	546
135	0	184	423
145	0	60	214
155	1	4	43
165	0	0	0
175	0	0	0
180	0	0	0

ZONAL LUMEN SUMMARY

DEGREES	LUMENS	% LAMP	% FIXTURE
0-30	4266	21.3	22.3
0-40	6856	34.3	35.9
0-60	12012	60.1	62.9
0-90	16982	84.9	88.9
90-120	1626	8.1	8.5
90-150	2104	10.5	11.0
90-180	2110	10.6	11.1
0-180	19093	95.5	100.0

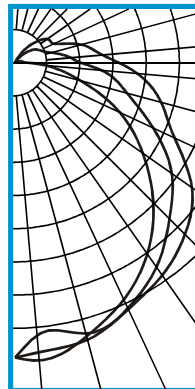
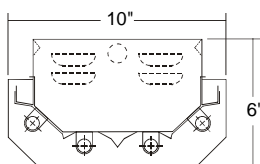
Lumen Output = 19093 lumens
 Luminaire Efficiency = 95.5%

SPACING CRITERION

ALONG	ACROSS
1.29	1.20

HBS100-4-4M-WR-E5H

TEST NO.=LA-T0631
 LAMP TYPE=F54T5HO
 NO. OF LAMP=4
 LUMENS PER LAMP=5000
 WATTS PER LAMP=54
 BALLAST FACTOR=1
 PHOTOMETRY TYPE=C



CANDLEPOWER

ANGLE	END	45	CROSS
0	4372	4372	4372
5	4432	4307	4040
15	4182	4243	4156
25	3853	3995	4016
35	3430	3673	3828
45	2895	3241	3572
55	2300	2832	3197
65	1693	2246	2600
75	986	1712	2238
85	451	1288	1816
90	193	975	1540
95	121	833	1304
105	86	569	1030
115	38	422	662
125	7	344	606
135	0	189	438
145	0	71	223
155	0	5	41
165	0	0	0
175	0	0	0
180	0	0	0

ZONAL LUMEN SUMMARY

DEGREES	LUMENS	% LAMP	% FIXTURE
0-30	3436	17.2	18.8
0-40	5729	28.6	31.3
0-60	10740	53.7	58.7
0-90	15919	79.6	87.0
90-120	1863	9.3	10.2
90-150	2370	11.8	13.0
90-180	2376	11.9	13.0
0-180	18295	91.5	100.0

Lumen Output = 18295 lumens
 Luminaire Efficiency = 91.5%

SPACING CRITERION

ALONG	ACROSS
1.24	1.35

