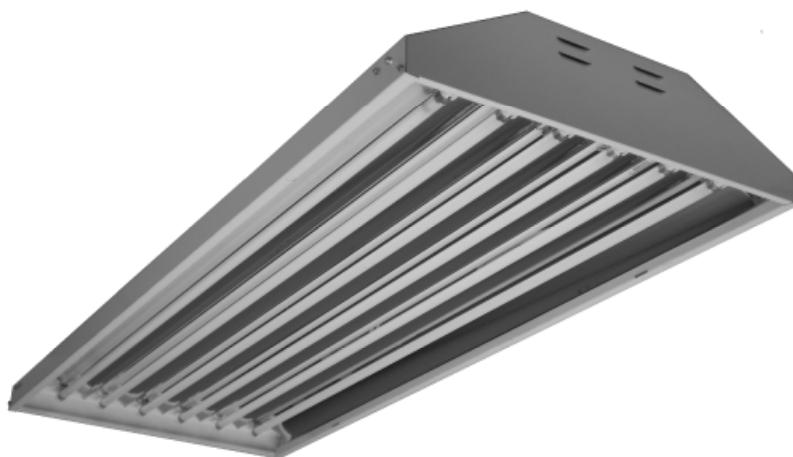




BAYLIGHTER™

HBV300 SERIES High Bay Luminaire



- High Bay Luminaire
- Quarter Turn Rotary Locking Sockets
- Removable Wiring Access Plate
- Surface, Pendant or Chain Mountable
- Suitable for Damp Locations
- Available with:
 - Fluorescent, LED and LED T8 (Internally Driven)
 - .040 Aluminum Fixture Housing
 - 95% Enhanced Specular Aluminum Reflectors
 - Emergency Battery Pack
 - Sensor
 - 11ga. Wire Guard
 - Variety of Mounting Accessories



Photometric Data and IES Files are Available on www.lalighting.com

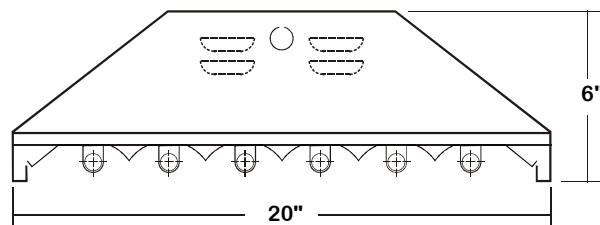


LOS ANGELES LIGHTING MFG. CO.
 10141 OLNEY ST. / EL MONTE, CA 91731
TEL : 626-454-8300 FAX : 626-454-8399
www.lalighting.com



HBV300 SERIES

CROSS SECTION



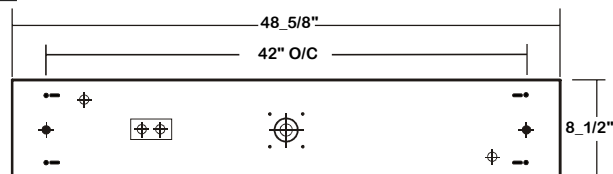
● **ALUMINUM REFLECTOR SECURED WITH QUARTER TURN FASTENERS FOR EASE OF MAINTENANCE.**

CATALOG NUMBER

	NOMINAL LENGTH	TOTAL LAMPS
HBV300-4-4M	4'	4
HBV300-5-4M	4'	5
HBV300-6-4M	4'	6
HBV300-4-4R	4'	4
HBV300-5-4R	4'	5
HBV300-6-4R	4'	6

BACK PLATE

--- V-HOOK • 3/16" K.O. ◆ 11/16" STEM MTG. K.O. ⊕ 7/8" OFFSET K.O. ⊕ 2" K.O.
 ⊕ ⊕ ACCESS PLATE



MOUNTING ACCESSORIES

● SMA - Pendant Mounting Adapter

20ga. die formed galvanized steel construction, die cast aluminum hub for 3/4" pipe pre-installed. Designed for single point pendant mount applications.

Each unit consists of:

- One Mounting Adapter assembly with lid.
- Four 3/8-16 Mounting bolts.
- One Sheet metal screw.
- One Set screw.
- 10' cable, one end free and the other end secured within fixture.
- Self-locking device secures the free end to ceiling member.

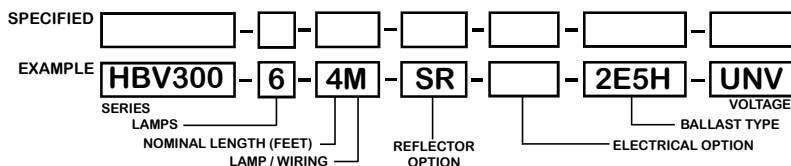


● STA - Fixture Stabilizer

18ga. die formed cold rolled steel construction. Bake white powder coated finish.



ORDERING GUIDE



NOTE: LAMP/WIRING*

M= Miniature Bi-Pin T5
 R= Medium Bi-Pin T8

OPTIONS AND ACCESSORIES

● REFLECTOR OPTIONS

Specular Aluminum Reflector (95%) SUFFIX SR
 White Aluminum Reflector (90%) WR

● ELECTRICAL OPTIONS

Emergency Battery Pack SUFFIX BP*
 External Line Fusing (HLR/GLR) ELF
 Radio Interference Filters RIF
 Motion Sensor MS

● BALLAST OPTIONS

Electronic T5 SUFFIX E5*
 Electronic T5HO E5H
 Electronic Step Dimming T5HO ESDM5H
 Electronic T8 E8*
 Electronic Step Dimming T8 ESDM8*

● ACCESSORIES

Pendant Mounting Adapter CAT.NO. SMA
 Fixture Stabilizer STA
 Wire Guard - 11 Ga. WG11-HBV300
 Fixture Suspending System *
 Ceiling Spacer *
 V-Hooks For Chain MTG. V-6
 Die Cast Hub For 3/4" Pipe HUB

*See appropriate reference page

SPECIFICATIONS

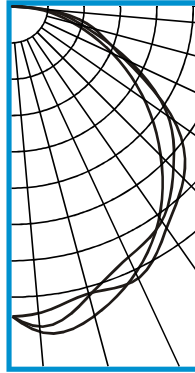
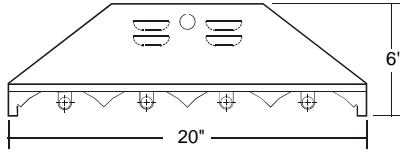
- **TYPE** High bay luminaire for surface, pendant, or chain mounting. Must be spaced a minimum of 1½" from ceiling when surface mounted.
- **CONSTRUCTION** 20 gauge cold rolled steel housing with louvered vents on top for heat removal. Quarter turn rotary locking lampholders standard. (.040 aluminum housing available as specified)
- **FINISH** Baked white polyester finish, minimum reflectance 86%. (Powder coated finish available.)
- **REFLECTOR** Specular aluminum reflector standard, 95% reflectance. (White aluminum reflector available)
- **WIRE GUARDS** 11 ga. chrome epoxy powder coated optional.
- **WIRING** 120v 60Hz., 277v 60Hz., UNV (universal voltage 120v thru 277v.) or as otherwise specified. Multiple levels of switching available as specified.
- **LABELS** U.L. Listed. Suitable for damp locations.



PHOTOMETRIC DATA

HBV300-4-4M-SR-E5H

TEST NO.=LA-T1029-1
 LAMP TYPE=F54T5HO
 NO. OF LAMP=4
 LUMENS PER LAMP=5000
 WATTS PER LAMP=54
 BALLAST FACTOR=1
 PHOTOMETRY TYPE=C



CANDLEPOWER

ANGLE	END	45	CROSS
0	5850	5850	5850
5	6167	6064	5806
15	6031	5639	5601
25	5532	5207	5647
35	4837	4926	5082
45	3953	4298	4572
55	3029	3578	3710
65	2074	2445	2324
75	1180	1379	1592
85	411	578	630
90	14	18	27
95	0	0	0
105	0	0	0
115	0	0	0
125	0	0	0
135	0	0	0
145	0	0	0
155	0	0	0
165	0	0	0
175	0	0	0
180	0	0	0

ZONAL LUMEN SUMMARY

DEGREES	LUMENS	% LAMP	% FIXTURE
0-30	4696	23.5	25.4
0-40	7801	39.0	42.3
0-60	14232	71.2	77.1
0-90	18454	92.3	100.0
90-120	5	0.0	0
90-150	5	0.0	0
90-180	5	0.0	0
0-180	18459	92.3	100.0

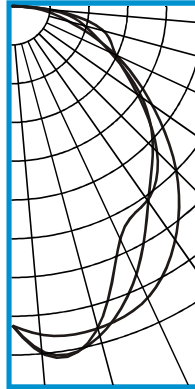
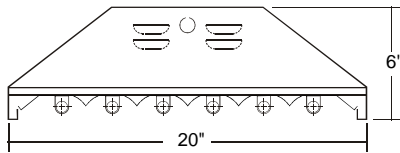
Lumen Output = 18459 lumens
 Luminaire Efficiency = 92.3%

SPACING CRITERION

ALONG	ACROSS
1.30	1.35

HBV300-6-4M-SR-E5H

TEST NO.=LA-T1015-1
 LAMP TYPE=F54T5HO
 NO. OF LAMP=6
 LUMENS PER LAMP=5000
 WATTS PER LAMP=54
 BALLAST FACTOR=1
 PHOTOMETRY TYPE=C



CANDLEPOWER

ANGLE	END	45	CROSS
0	9436	9436	9436
5	9743	10237	10306
15	9844	10059	9808
25	9491	8692	7556
35	8393	7006	6978
45	6836	5866	6038
55	5010	4652	4496
65	3333	3177	3357
75	1716	2197	2777
85	626	1028	1073
90	40	34	26
95	0	0	0
105	0	0	0
115	0	0	0
125	0	0	0
135	0	0	0
145	0	0	0
155	0	0	0
165	0	0	0
175	0	0	0
180	0	0	0

ZONAL LUMEN SUMMARY

DEGREES	LUMENS	% LAMP	% FIXTURE
0-30	7765	25.9	28.0
0-40	12380	41.3	44.6
0-60	21363	71.2	77.0
0-90	27726	92.4	100.0
90-120	9	0.0	0
90-150	9	0.0	0
90-180	9	0.0	0
0-180	27735	92.5	100.0

Lumen Output = 27735 lumens
 Luminaire Efficiency = 92.5%

SPACING CRITERION

ALONG	ACROSS
1.37	1.15

This space is intentionally left blank.

This space is intentionally left blank.

