



BAYLIGHTER™

IBT100 SERIES High Bay Luminaire



- High Bay Luminaire
- Quarter Turn Rotary Locking Sockets
- Removable Wiring Access Plate
- Stem, Cable or Chain Mountable
- Suitable for Damp Locations
- Available with:
 - Fluorescent, LED and LED T8 (Internally Driven)
 - .040 Aluminum Fixture Housing
 - Frame & Lens Assembly (Available in 4' Fixture Only)
 - 95% Enhanced Specular Aluminum Reflectors
 - Sensor
 - Emergency Battery Pack
 - Die Cast Hub for 3/4" Pipe
 - 11 ga. Wire Guard



Photometric Data and IES Files are Available on www.lalighting.com



LOS ANGELES LIGHTING MFG. CO.

10141 OLNEY ST. / EL MONTE, CA 91731

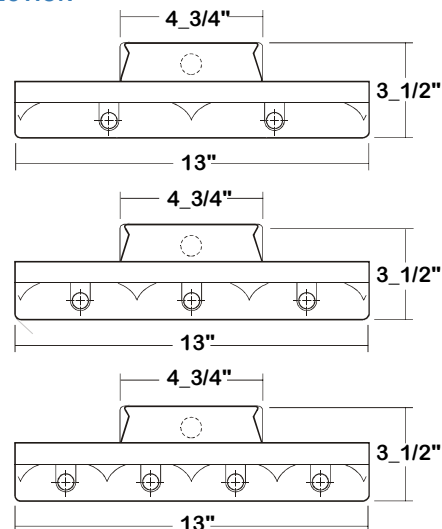
TEL : 626-454-8300 FAX : 626-454-8399

www.lalighting.com



IBT100 SERIES

CROSS SECTION



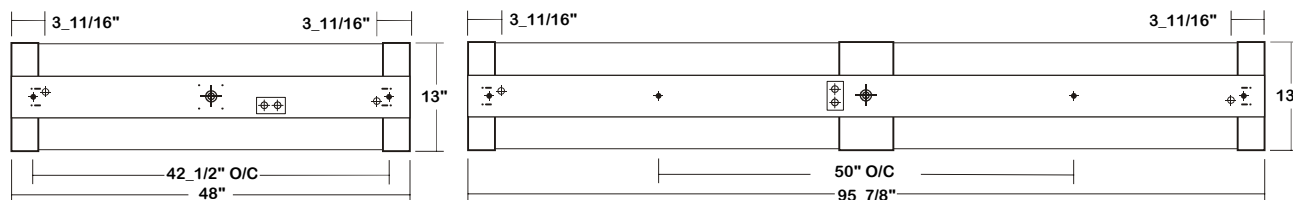
● ALUMINUM REFLECTOR SECURED WITH QUARTER TURN FASTENERS FOR EASE OF MAINTENANCE.

CATALOG NUMBER

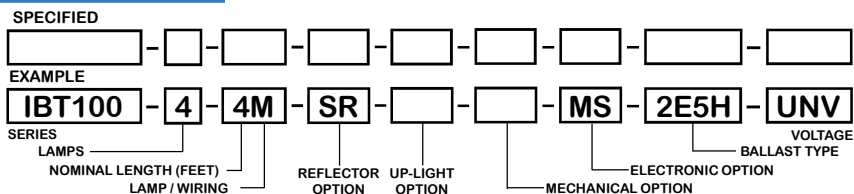
	NOMINAL LENGTH	TOTAL LAMPS		NOMINAL LENGTH	TOTAL LAMPS
IBT100-2-4M	4'	2	IBT100-2-4R	4'	2
IBT100-2-8MT	8'	4	IBT100-2-8RT	8'	4
IBT100-3-4M	4'	3	IBT100-3-4R	4'	3
IBT100-3-8MT	8'	6	IBT100-3-8RT	8'	6
IBT100-4-4M	4'	4	IBT100-4-4R	4'	4
IBT100-4-8MT	8'	8	IBT100-4-8RT	8'	8

BACK PLATE

◆ V-HOOK
• 3/16" K.O.
◆ 11/16" STEM MTG. K.O.
⊠ ACCESS PLATE
⊕ 7/8" OFFSET K.O.
⊙ 2" K.O.



ORDERING GUIDE



NOTE: LAMP/WIRING* M= Miniature Bi-Pin T5 R = Medium Bi-Pin T8 MT= Miniature Bi-Pin T5, Tandem Wiring RT = Medium Bi-Pin T8, Tandem Wiring

HUB FOR 3/4" PIPE

Aluminum die cast hub for 3/4" pipe with safety cable set. Each set consists of:

- One Hub .
- 8' cable, one end free and the other end secured within fixture.
- Self-locking device secures the free end to ceiling member.



*Please see Page REF-5 for mounting detail.

OPTIONS AND ACCESSORIES

<ul style="list-style-type: none"> ● REFLECTOR OPTIONS Specular Aluminum Reflector (95%) SUFFIX SR White Aluminum Reflector (90%) SUFFIX WR 	<ul style="list-style-type: none"> ● ELECTRICAL OPTIONS Emergency Battery Pack SUFFIX BP* External Line Fusing (HLR/GLR) SUFFIX ELF Motion Sensor SUFFIX MS 	<ul style="list-style-type: none"> ● ACCESSORIES Wire Guard - 11 Ga. CAT.NO. WG11-IBT100 Fixture Suspension System * Ceiling Spacer * 4" Leg Height V-Hook V4
<ul style="list-style-type: none"> ● UP-LIGHT OPTIONS Up-light SUFFIX U 	<ul style="list-style-type: none"> ● BALLAST OPTIONS Electronic T5 SUFFIX E5* Electronic T5HO SUFFIX E5H Electronic Step Dimming T5HO SUFFIX ESDM5H Electronic T8 SUFFIX E8* Electronic Step Dimming T8 SUFFIX ESDM8* 	
<ul style="list-style-type: none"> ● MECHANICAL OPTIONS Die Cast Hub For 3/4" Pipe, For 4' Only SUFFIX HUB 		

*See Appropriate Reference Page

SPECIFICATIONS

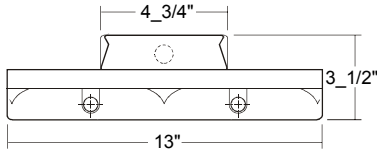
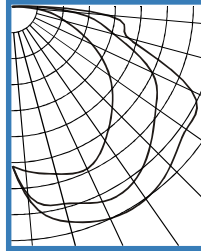
- **TYPE** High bay open light luminaire for stems, cable or chain mounting.
- **CONSTRUCTION** 22 gauge cold rolled steel housing. Quarter turn rotary locking lampholders standard. (20 ga. C.R.S. and .040 aluminum housing available as specified)
- **FINISH** Baked white polyester finish, minimum reflectance 86%. (Powder coated finish available.)
- **REFLECTOR** Specular aluminum reflector standard, 95% reflectance (White aluminum reflector available). Slotted up-light reflector optional.
- **WIRING** 120v 60Hz., 277v 60Hz., UNV (universal voltage 120v thru 277v.) or as otherwise specified.
- **LABELS** Multiple levels of switching available as specified. U.L. or ETL Listed. Suitable for damp locations.



PHOTOMETRIC DATA

IBT100-2-4M-SR-E5H

TEST NO.=LA-T1971
 LAMP TYPE=F54T5HO
 NO. OF LAMP=2
 LUMENS PER LAMP=5000
 WATTS PER LAMP=54
 BALLAST FACTOR=1
 PHOTOMETRY TYPE=C



CANDLEPOWER

ANGLE	END	45	CROSS
0	1664	1664	1664
5	1721	1981	2026
15	1804	2124	2321
25	1858	2240	2431
35	1688	2215	2437
45	1470	2032	2333
55	1229	1823	2214
65	904	1597	2050
75	561	1087	1242
85	253	633	978
90	41	197	326
95	0	8	25
105	0	0	0
115	0	0	0
125	0	0	0
135	0	0	0
145	0	0	0
155	0	0	0
165	0	0	0
175	0	0	0
180	0	0	0

ZONAL LUMEN SUMMARY

DEGREES	LUMENS	% LAMP	% FIXTURE
0-30	1790	17.9	19.0
0-40	3134	31.3	33.2
0-60	6247	62.5	66.1
0-90	9387	93.9	99.4
90-120	61	0.6	0.6
90-150	61	0.6	0.6
90-180	61	0.6	0.6
0-180	9447	94.5	100.0

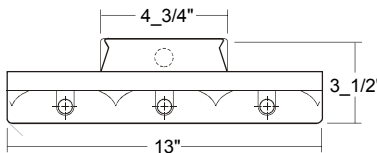
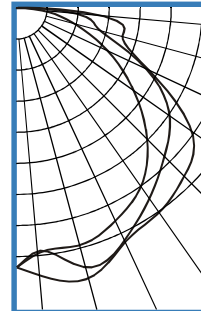
Lumen Output = 9447 lumens
 Luminaire Efficiency = 94.5%

SPACING CRITERION

ALONG	ACROSS
1.51	1.98

IBT100-3-4M-SR-E5H

TEST NO.=LA-T1767
 LAMP TYPE=F54T5HO
 NO. OF LAMP=3
 LUMENS PER LAMP=5000
 WATTS PER LAMP=54
 BALLAST FACTOR=1
 PHOTOMETRY TYPE=C



CANDLEPOWER

ANGLE	END	45	CROSS
0	3813	3813	3813
5	3618	3587	3948
15	3607	3948	4110
25	3446	3762	3790
35	3193	3410	3663
45	2713	3076	3489
55	2093	2745	3142
65	1469	2095	2127
75	867	1261	1610
85	340	843	1231
90	41	206	330
95	1	21	57
105	0	0	0
115	0	0	0
125	0	0	0
135	0	0	0
145	0	0	0
155	0	0	0
165	0	0	0
175	0	0	0
180	0	0	0

ZONAL LUMEN SUMMARY

DEGREES	LUMENS	% LAMP	% FIXTURE
0-30	3167	21.1	22.4
0-40	5315	35.4	37.5
0-60	10112	67.4	71.4
0-90	14085	93.9	99.5
90-120	74	0.5	0.5
90-150	74	0.5	0.5
90-180	74	0.5	0.5
0-180	14159	94.4	100.0

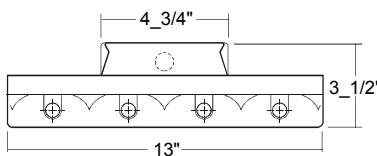
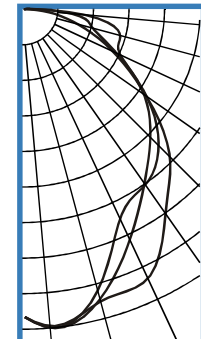
Lumen Output = 14159 lumens
 Luminaire Efficiency = 94.4%

SPACING CRITERION

ALONG	ACROSS
1.30	1.47

IBT100-4-4M-SR-E5H

TEST NO.=LA-T1512
 LAMP TYPE=F54T5HO
 NO. OF LAMP=4
 LUMENS PER LAMP=5000
 WATTS PER LAMP=54
 BALLAST FACTOR=1
 PHOTOMETRY TYPE=C



CANDLEPOWER

ANGLE	END	45	CROSS
0	6752	6752	6752
5	6975	7016	7008
15	6603	6526	6307
25	6467	5502	4996
35	5389	4591	4656
45	4483	3893	4149
55	3198	3159	3220
65	2080	2180	2292
75	1148	1527	2162
85	368	974	1257
90	46	218	307
95	2	42	111
105	0	0	2
115	0	0	0
125	0	0	0
135	0	0	0
145	0	0	0
155	0	0	0
165	0	0	0
175	0	0	0
180	0	0	0

ZONAL LUMEN SUMMARY

DEGREES	LUMENS	% LAMP	% FIXTURE
0-30	5107	25.5	27.0
0-40	8126	40.6	43.0
0-60	14161	70.8	75.0
0-90	18795	94.0	99.5
90-120	95	0.5	0.5
90-150	95	0.5	0.5
90-180	95	0.5	0.5
0-180	18890	94.5	100.0

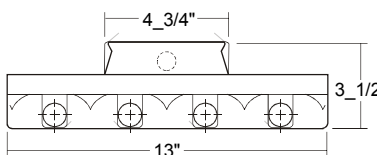
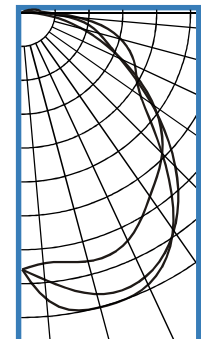
Lumen Output = 18890 lumens
 Luminaire Efficiency = 94.5%

SPACING CRITERION

ALONG	ACROSS
1.28	1.05

IBT100-4-4R-SR-E8

TEST NO.=LA-T1513
 LAMP TYPE=FO32T8
 NO. OF LAMP=4
 LUMENS PER LAMP=2900
 WATTS PER LAMP=32
 BALLAST FACTOR=1
 PHOTOMETRY TYPE=C



CANDLEPOWER

ANGLE	END	45	CROSS
0	2926	2926	2926
5	2865	3056	3282
15	2931	3320	3472
25	2862	3322	3414
35	2546	3022	3002
45	2259	2469	2253
55	1830	1797	1647
65	1245	1226	1420
75	705	905	1163
85	235	504	645
90	46	181	281
95	10	120	203
105	0	52	128
115	0	11	44
125	0	0	0
135	0	0	0
145	0	0	0
155	0	0	0
165	0	0	0
175	0	0	0
180	0	0	0

ZONAL LUMEN SUMMARY

DEGREES	LUMENS	% LAMP	% FIXTURE
0-30	2711	23.4	25.0
0-40	4532	39.1	41.8
0-60	7947	68.5	73.3
0-90	10622	91.6	98.0
90-120	218	1.9	2.0
90-150	218	1.9	2.0
90-180	218	1.9	2.0
0-180	10840	93.5	100.0

Lumen Output = 10840 lumens
 Luminaire Efficiency = 93.5%

SPACING CRITERION

ALONG	ACROSS
1.35	1.50

