



# BAYLIGHTER™

## IBT100 SERIES High Bay Luminaire



- High Bay Luminaire
- Quarter Turn Rotary Locking Sockets
- Removable Wiring Access Plate
- Stem, Cable or Chain Mountable
- Suitable for Damp Locations
- Available with:
  - Fluorescent, LED and LED T8 (Internally Driven)
  - .040 Aluminum Fixture Housing
  - Frame & Lens Assembly (Available in 4' Fixture Only)
  - 95% Enhanced Specular Aluminum Reflectors
  - Sensor
  - Emergency Battery Pack
  - Die Cast Hub for 3/4" Pipe
  - 11 ga. Wire Guard



*Photometric Data and IES Files are Available on [www.lalighting.com](http://www.lalighting.com)*



### LOS ANGELES LIGHTING MFG. CO.

10141 OLNEY ST. / EL MONTE, CA 91731

TEL : 626-454-8300 FAX : 626-454-8399

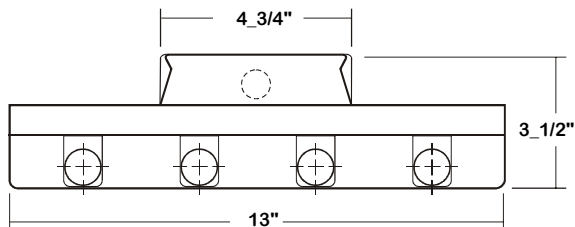
[www.lalighting.com](http://www.lalighting.com)

# BAYLIGHTER™ - LED T8 (Internally Driven)



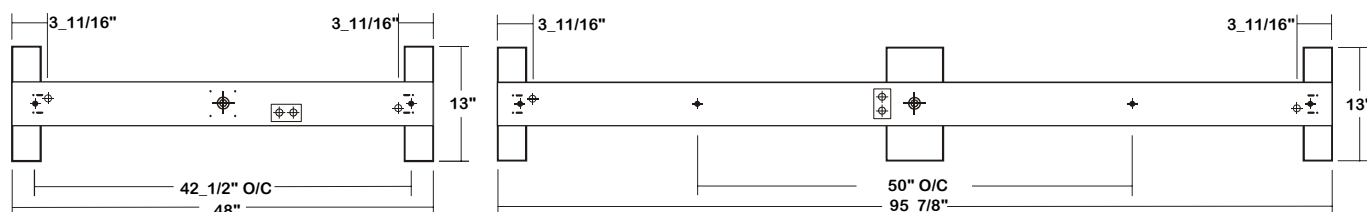
## IBT100 SERIES - LED T8

### CROSS SECTION



### BACK PLATE

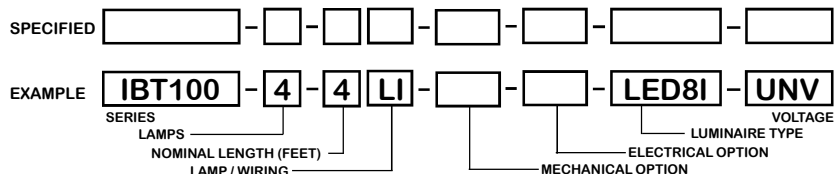
- ➔ V-HOOK    • 3/16" K.O.    ✦ 11/16" STEM MTG. K.O.    ⊕ ACCESS PLATE    ⊕ 7/8" OFFSET K.O.    ⊕ 2" K.O.



### CATALOG NUMBER

	NOMINAL LENGTH	TOTAL MODULES		NOMINAL LENGTH	TOTAL MODULES
IBT100-2-4Lx	4'	2	IBT100-4-4Lx	4'	4
IBT100-2-8LxT	8'	4	IBT100-4-8LxT	8'	8
IBT100-3-4Lx	4'	3			
IBT100-3-8LxT	8'	6			

### ORDERING GUIDE



### TS2 - LED Luminaire On/Off Safety Switch



- Easily accessible on exterior of wire way.
- Allows individual fixture to be switched ON/OFF during re-lamping or Maintenance.
- Prevents damage to lamp and electrical shock during lamping and re-lamping.
- Allows safe entry to wire way channel where power connector can be disconnected for maintenance to fixture.

### LAMP / WIRING

**LI = LED T8 internal driver light tube.**  
Both ends powered.  
Shunted sockets used.



**LR = LED T8 internal driver light tube.**  
Single end powered.  
Non-shunted sockets used.



### OPTIONS AND ACCESSORIES

- **MECHANICAL OPTIONS**  
Die Cast Hub For 3/4" Pipe, For 4' Only
- **ELECTRICAL OPTIONS**  
LED Luminaire ON/OFF Safety Switch  
Motion Sensor

**SUFFIX**  
HUB  
  
**SUFFIX**  
TS2  
MS

- **ACCESSORIES**  
Wire Guard - 11 Ga.  
Fixture Suspension System  
Ceiling Spacer  
4" Leg Height V-Hook

**CAT. NO.**  
WG11-IBT100  
\*  
\*  
V4

\*See appropriate reference page

### SPECIFICATIONS

- **TYPE**
- **CONSTRUCTION**
- **FINISH**
- **WIRING**
- **LABELS**

High bay open light luminaire for stems, cable or chain mounting applications, for LED T8 internally driven light tube(s)\*\*.  
22 gauge cold rolled steel housing. Quarter turn rotary locking lampholders standard.  
(20 ga. C.R.S. and .040 aluminum housing available as specified)  
Baked white polyester finish , minimum reflectance 86%. (Powder coated finish available.)  
Operate LED T8 internally driven light tube(s)\*\*.  
ETL Listed. Suitable for lamp locations.

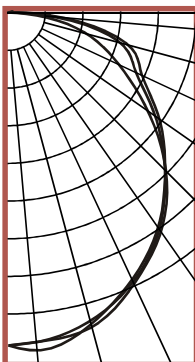
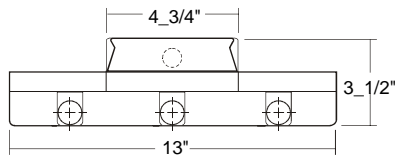
\*\* Lamp(s) by others.



**PHOTOMETRIC DATA**

**IBT100-3-4Lx-LED8x-UNV**

TEST NO.=LA-T2228  
 LAMP TYPE=LED T8 Internally Driven Light Tube\*  
 NO. OF LAMP=3  
 LUMENS PER LAMP=1700  
 WATTS PER LAMP=18.5  
 PHOTOMETRY TYPE=C  
 \* Test with major manufacturer's  
 LED T8 light tube(s), consult  
 L.A. Lighting for details.



**CANDLEPOWER**

ANGLE	END	45	CROSS
0	1224	1224	1224
5	1216	1216	1247
15	1196	1172	1184
25	1097	1089	1080
35	979	969	961
45	819	813	815
55	623	657	676
65	446	517	541
75	296	425	455
85	97	165	196
90	6	32	66
95	4	10	6
105	0	7	15
115	0	1	5
125	1	1	1
135	0	1	1
145	1	1	0
155	1	1	0
165	1	1	1
175	2	2	0
180	0	0	0

**ZONAL LUMEN SUMMARY**

DEGREES	LUMENS	% LAMP	% FIXTURE
0-30	955	24.5	24.7
0-40	1564	40.1	40.4
0-60	2782	71.3	71.9
0-90	3843	98.5	99.3
90-120	25	0.6	0.6
90-150	26	0.7	0.7
90-180	27	0.7	0.7
0-180	3870	99.2	100.0

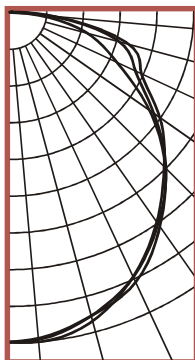
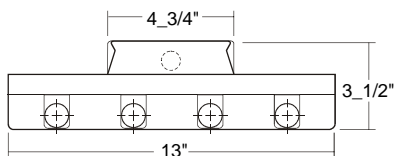
Lumen Output = 3870 lumens  
 Luminaire Efficiency = 99.2%

**SPACING CRITERION**

ALONG	ACROSS
1.26	1.24

**IBT100-4-4Lx-LED8x-UNV**

TEST NO.=LA-T1793  
 LAMP TYPE=LED T8 Internally Driven Light Tube\*  
 NO. OF LAMP=4  
 LUMENS PER LAMP=1700  
 WATTS PER LAMP=18.5  
 PHOTOMETRY TYPE=C  
 \* Test with major manufacturer's  
 LED T8 light tube(s), consult  
 L.A. Lighting for details.



**CANDLEPOWER**

ANGLE	END	45	CROSS
0	1640	1640	1640
5	1629	1635	1647
15	1565	1564	1591
25	1482	1454	1452
35	1302	1286	1274
45	1093	1099	1086
55	848	875	911
65	590	689	723
75	400	565	614
85	128	204	224
90	5	41	83
95	5	8	8
105	1	10	14
115	1	2	8
125	1	2	1
135	1	3	2
145	1	2	4
155	1	1	2
165	1	1	0
175	0	2	1
180	0	0	0

**ZONAL LUMEN SUMMARY**

DEGREES	LUMENS	% LAMP	% FIXTURE
0-30	1277	24.6	24.8
0-40	2086	40.1	40.4
0-60	3720	71.5	72.1
0-90	5122	98.5	99.3
90-120	30	0.6	0.6
90-150	34	0.6	0.7
90-180	35	0.7	0.7
0-180	5157	99.2	100.0

Lumen Output = 5157 lumens  
 Luminaire Efficiency = 99.2%

**SPACING CRITERION**

ALONG	ACROSS
1.25	1.23

This space is intentionally left blank.

This space is intentionally left blank.

