



# BAYLIGHTER™

## IBT200 SERIES High Bay Luminaire



with FLUORESCENT LAMPS



with LED T8 LAMPS

- High Bay Luminaire
- Quarter Turn Rotary Locking Sockets
- Removable Wiring Access Plate
- Stem, Cable or Chain Mountable
- Suitable for Damp Locations
- Available with:
  - Fluorescent, LED and LED T8 (Internally Driven)
  - .040 Aluminum Fixture Housing
  - Frame & Lens Assembly (Available in 4' Fixture Only)
  - 95% Enhanced Specular Aluminum Reflectors
  - Sensor
  - Emergency Battery Pack
  - Die Cast Hub for 3/4" Pipe
  - 11 ga. Wire Guard

Photometric Data and IES Files are Available on [www.lalighting.com](http://www.lalighting.com)



### LOS ANGELES LIGHTING MFG. CO.

10141 OLNEY ST. / EL MONTE, CA 91731

TEL : 626-454-8300 FAX : 626-454-8399

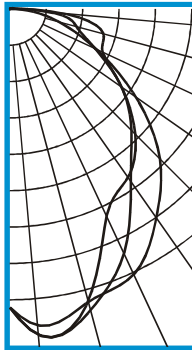
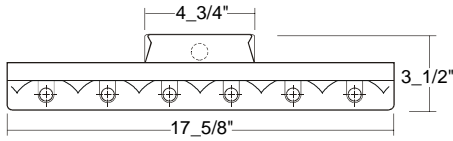
[www.lalighting.com](http://www.lalighting.com)



**PHOTOMETRIC DATA**

**IBT200-6-4M-SR-E5H**

TEST NO.=LA-T1514  
 LAMP TYPE=F54T5HO  
 NO. OF LAMP=6  
 LUMENS PER LAMP=5000  
 WATTS PER LAMP=54  
 BALLAST FACTOR=1  
 PHOTOMETRY TYPE=C



**CANDLEPOWER**

ANGLE	END	45	CROSS
0	9933	9933	9933
5	10566	10888	10880
15	10091	10375	10062
25	9749	8977	7614
35	8490	7016	6848
45	7056	5715	5898
55	5109	4532	4529
65	3166	3128	3406
75	1696	2293	3219
85	546	1376	1787
90	49	242	367
95	1	52	118
105	0	0	5
115	0	0	0
125	0	0	0
135	0	0	0
145	0	0	0
155	0	0	0
165	0	0	0
175	0	0	0
180	0	0	0

**ZONAL LUMEN SUMMARY**

DEGREES	LUMENS	% LAMP	% FIXTURE
0-30	8012	26.7	28.2
0-40	12624	42.1	44.4
0-60	21540	71.8	75.7
0-90	28336	94.5	99.6
90-120	109	0.4	0.4
90-150	109	0.4	0.4
90-180	109	0.4	0.4
0-180	28446	94.8	100.0

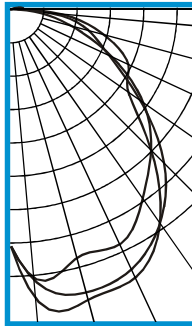
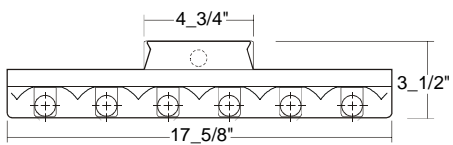
Lumen Output = 28446 lumens  
 Luminaire Efficiency = 94.8%

**SPACING CRITERION**

ALONG	ACROSS
1.33	1.08

**IBT200-6-4R-SR-E8**

TEST NO.=LA-T1515  
 LAMP TYPE=FO32T8  
 NO. OF LAMP=6  
 LUMENS PER LAMP=2900  
 WATTS PER LAMP=32  
 BALLAST FACTOR=1  
 PHOTOMETRY TYPE=C



**CANDLEPOWER**

ANGLE	END	45	CROSS
0	4053	4053	4053
5	4617	4659	4982
15	4395	5011	5139
25	4428	4898	5055
35	3932	4450	4444
45	3388	3703	3384
55	2754	2686	2447
65	1894	1844	2212
75	1056	1371	1632
85	370	669	824
90	48	190	306
95	9	115	210
105	0	54	122
115	0	9	39
125	0	0	0
135	0	0	0
145	0	0	0
155	0	0	0
165	0	0	0
175	0	0	0
180	0	0	0

**ZONAL LUMEN SUMMARY**

DEGREES	LUMENS	% LAMP	% FIXTURE
0-30	4064	23.4	25.3
0-40	5778	39.0	42.2
0-60	11897	68.4	74.1
0-90	15832	91.0	98.6
90-120	217	1.2	1.4
90-150	217	1.2	1.4
90-180	217	1.2	1.4
0-180	16049	92.2	100.0

Lumen Output = 16049 lumens  
 Luminaire Efficiency = 92.2%

**SPACING CRITERION**

ALONG	ACROSS
1.45	1.55

This space is intentionally left blank.

This space is intentionally left blank.

