



BAYLIGHTER™

IBT300 SERIES High Bay Luminaire



with FLUORESCENT LAMPS



with LED T8 LAMPS

- High Bay Luminaire
- Quarter Turn Rotary Locking Sockets
- Removable Wiring Access Plate
- Stem, Cable or Chain Mountable
- Suitable for Damp Locations
- Available with:
 - Fluorescent, LED and LED T8 (Internally Driven)
 - .040 Aluminum Fixture Housing
 - Frame & Lens Assembly (Available in 4' Fixture Only)
 - 95% Enhanced Specular Aluminum Reflectors
 - Sensor
 - Emergency Battery Pack
 - Die Cast Hub for 3/4" Pipe
 - 11 ga. Wire Guard



Photometric Data and IES Files are Available on www.lalighting.com



LOS ANGELES LIGHTING MFG. CO.

10141 OLNEY ST. / EL MONTE, CA 91731

TEL : 626-454-8300 FAX : 626-454-8399

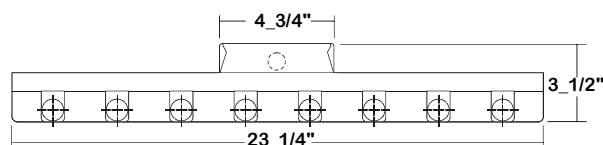
www.lalighting.com

BAYLIGHTER™ - LED T8 (Internally Driven)



IBT300 SERIES - LED T8

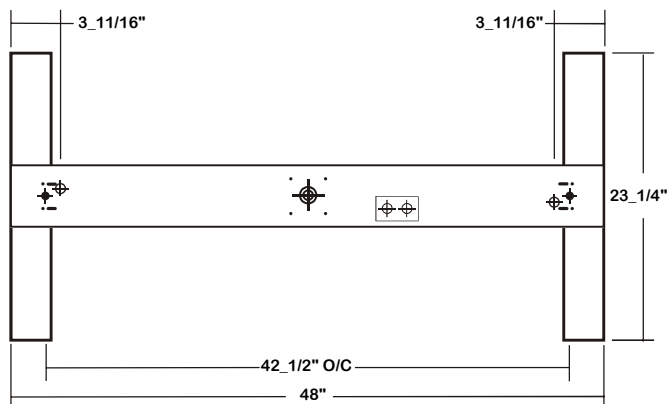
CROSS SECTION



BACK PLATE

- V-HOOK • 3/16" K.O. • 11/16" STEM MTG. K.O.

- ⊕ ACCESS PLATE ⊕ 7/8" OFFSET K.O. ⊕ 2" K.O.



CATALOG NUMBER

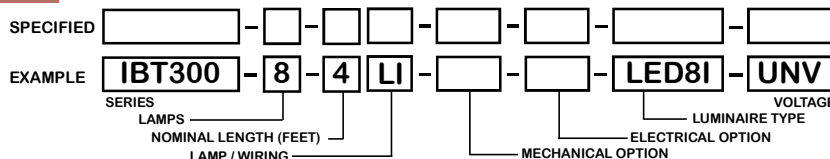
	NOMINAL LENGTH	TOTAL MODULES
IBT300-8-4Lx	4'	8
IBT300-9-4Lx	4'	9
IBT300-10-4Lx	4'	10

TS2 - LED Luminaire On/Off Safety Switch



- Easily accessible on exterior of wire way.
- Allows individual fixture to be switched ON/OFF during re-lamping or Maintenance.
- Prevents damage to lamp and electrical shock during lamping and re-lamping.
- Allows safe entry to wire way channel where power connector can be disconnected for maintenance to fixture.

ORDERING GUIDE



LAMP / WIRING

LI = LED T8 internal driver light tube.
Both ends powered.
Shunted sockets used.



LR = LED T8 internal driver light tube.
Single end powered.
Non-shunted sockets used.



OPTIONS AND ACCESSORIES

- **MECHANICAL OPTIONS**
Die Cast Hub For 3/4" Pipe, For 4' Only
- **ELECTRICAL OPTIONS**
LED Luminaire ON/OFF Safety Switch
Motion Sensor

SUFFIX
HUB
SUFFIX
TS2
MS

- **ACCESSORIES**
Wire Guard - 11 Ga.
Fixture Suspension System
Ceiling Spacer
4" Leg Height V-Hook

CAT. NO.
WG11-IBT300
*
*
V4

*See appropriate reference page

SPECIFICATIONS

- **TYPE**
- **CONSTRUCTION**
- **FINISH**
- **WIRING**
- **LABELS**

High bay open light luminaire for stems, cable or chain mounting applications, for LED T8 internally driven light tube(s)**.
22 gauge cold rolled steel housing. Quarter turn rotary locking lampholders standard.
(20 ga. C.R.S. and .040 aluminum housing available as specified)
Baked white polyester finish, minimum reflectance 86%. (Powder coated finish available.)
Operate LED T8 internally driven light tube(s)**.
Suitable for damp location.

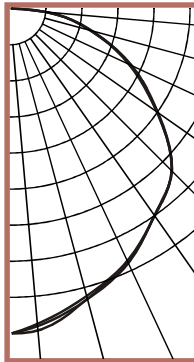
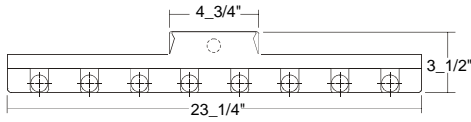
** Lamp(s) by others.



PHOTOMETRIC DATA

IBT300-8-4Lx-LED8x-UNV

TEST NO.=LA-T2236
LAMP TYPE=LED T8 Internally Driven Light Tube*
NO. OF LAMP=8
LUMENS PER LAMP=1700
WATTS PER LAMP=18.5
PHOTOMETRY TYPE=C
 * Test with major manufacturer's LED T8 light tube(s), consult L.A. Lighting for details.



CANDLEPOWER

ANGLE	END	45	CROSS
0	4517	4517	4517
5	4487	4423	4391
15	4157	4167	4121
25	3877	3880	3846
35	3483	3483	3190
45	3152	3155	3148
55	2470	2450	2450
65	1829	1815	1779
75	1105	1133	1120
85	444	448	443
90	29	26	32
95	1	0	0
105	1	1	0
115	2	0	0
125	1	0	0
135	0	0	0
145	0	0	0
155	0	0	0
165	0	0	0
175	0	0	0
180	0	0	0

ZONAL LUMEN SUMMARY

DEGREES	LUMENS	% LAMP	% FIXTURE
0-30	3392	24.9	25.0
0-40	5581	41.0	41.1
0-60	10225	75.2	75.2
0-90	13581	99.9	99.9
90-120	10	0.1	0.1
90-150	11	0.1	0.1
90-180	11	0.1	0.1
0-180	13591	99.9	100.0

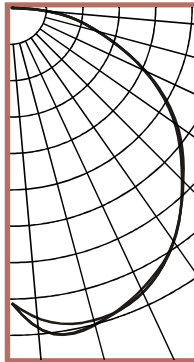
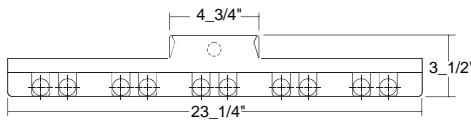
Lumen Output = 13591 lumens
 Luminaire Efficiency = 99.9%

SPACING CRITERION

ALONG	ACROSS
1.21	1.21

IBT300-10-4Lx-LED8x-UNV

TEST NO.=LA-T2237
LAMP TYPE=LED T8 Internally Driven Light Tube*
NO. OF LAMP=10
LUMENS PER LAMP=1700
WATTS PER LAMP=18.5
PHOTOMETRY TYPE=C
 * Test with major manufacturer's LED T8 light tube(s), consult L.A. Lighting for details.



CANDLEPOWER

ANGLE	END	45	CROSS
0	4663	4663	4663
5	4925	5090	5090
15	5099	5159	5170
25	4942	4930	4884
35	4464	4473	4467
45	3829	3809	3798
55	3176	3142	3125
65	2309	2305	2287
75	1376	1386	1382
85	549	528	540
90	2	3	3
95	0	1	0
105	1	1	0
115	1	1	1
125	1	1	0
135	0	0	0
145	1	1	0
155	1	0	0
165	1	0	0
175	0	1	2
180	6	6	6

ZONAL LUMEN SUMMARY

DEGREES	LUMENS	% LAMP	% FIXTURE
0-30	4217	24.8	24.8
0-40	7024	41.3	41.3
0-60	12798	75.3	75.3
0-90	16985	99.9	100.0
90-120	3	0.0	0.0
90-150	4	0.0	0.0
90-180	4	0.0	0.0
0-180	16989	99.9	100.0

Lumen Output = 16989 lumens
 Luminaire Efficiency = 99.9%

SPACING CRITERION

ALONG	ACROSS
1.44	1.44

This space is intentionally left blank.

This space is intentionally left blank.

