



# INDUSTRIAL

## IND100 SERIES



### 9" Wide Reflector Industrial Luminaire



- 9" Wide Reflector Industrial Luminaire
- 22 Ga. Cold Rolled Steel Housing
- Baked White Polyester Finish
- Screw-On End Caps
- End Plates May be Used as Channel Couplings
- Reflector Secured by Two Quarter Turn Fasteners
- Suitable for Damp Locations
- Available with:
  - Fluorescent, LED and LED T8 (Internally Driven)
  - Up-Light
  - 95% Enhanced Specular Aluminum Reflector
  - Emergency Battery Pack
  - Switch
  - 14 Ga. Wire Guard



Photometric Data and IES Files are Available on [www.lalighting.com](http://www.lalighting.com)



**LOS ANGELES LIGHTING MFG. CO.**

10141 OLNEY ST. / EL MONTE, CA 91731

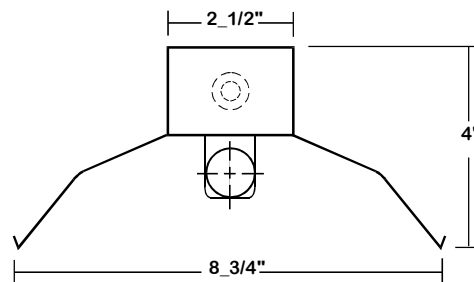
TEL : 626-454-8300 FAX : 626-454-8399

[www.lalighting.com](http://www.lalighting.com)



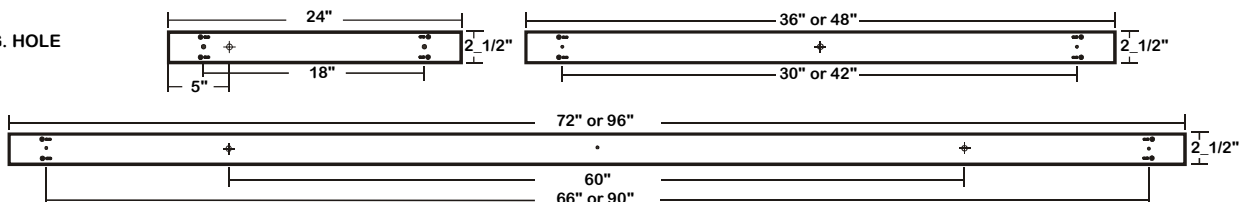
# IND100 SERIES

## CROSS SECTION



### BACK PLATE

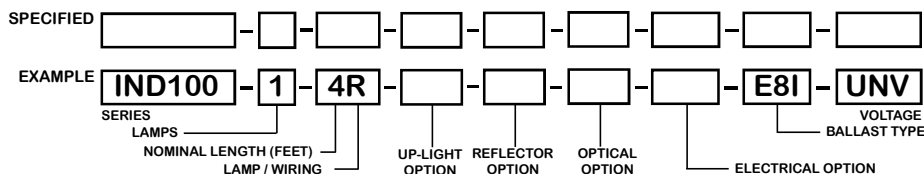
- V-HOOK
- 3/16" MTG. HOLE
- 7/8" K.O.



### CATALOG NUMBER

NOMINAL LENGTH	TOTAL LAMPS	NOMINAL LENGTH	TOTAL LAMPS	NOMINAL LENGTH	TOTAL LAMPS	NOMINAL LENGTH	TOTAL LAMPS	
IND100-1-2M	2'	1	IND100-1-2R	2'	1	IND100-1-2S	2'	1
IND100-1-3M	3'	1	IND100-1-3R	3'	1	IND100-1-3S	3'	1
IND100-1-4M	4'	1	IND100-1-4R	4'	1	IND100-1-4S	4'	1
IND100-1-6MT	6'	2	IND100-1-6RT	6'	2	IND100-1-6S	6'	1
IND100-1-8MT	8'	2	IND100-1-8RT	8'	2	IND100-1-8S	8'	1
						IND100-1-12ST	12'	2
						IND100-1-16ST	16'	2
						IND100-1-4H	4'	1
						IND100-1-6H	6'	1
						IND100-1-8H	8'	1
						IND100-1-12HT	12'	2
						IND100-1-16HT	16'	2

### ORDERING GUIDE



**NOTE: LAMP/WIRING\***  
 M = Miniature Bi-Pin T5  
 MT = Miniature Bi-Pin T5, Tandem Wiring  
 R = Medium Bi-Pin T8  
 RT = Medium Bi-Pin T8, Tandem Wiring  
 S = Slimline  
 ST = Slimline, Tandem Wiring  
 H = High Output (800MA)  
 HT = High Output, Tandem Wiring

### OPTIONS AND ACCESSORIES

<ul style="list-style-type: none"> <li>● <b>UP-LIGHT OPTIONS</b></li> <li>10% Uplight</li> </ul>	SUFFIX S10	<ul style="list-style-type: none"> <li>● <b>ELECTRICAL OPTIONS</b></li> <li>Emergency Battery Pack</li> <li>External Line Fusing (HLR/GLR)</li> <li>Radio Interference Filters</li> <li>Plug-In Branch Wiring Connector System</li> <li>Switch</li> </ul>	SUFFIX BP* ELF RIF PIW* *	<ul style="list-style-type: none"> <li>● <b>BALLAST OPTIONS</b></li> <li>Electronic T5</li> <li>Electronic T5HO</li> <li>Electronic Step Dimming T5HO</li> <li>Electronic T8</li> <li>Electronic Step Dimming T8</li> </ul>	SUFFIX E5* E5H ESDM5H E8* ESDM8*
<ul style="list-style-type: none"> <li>● <b>REFLECTOR OPTIONS</b></li> <li>Specular Aluminum Reflector (95%)</li> </ul>	SUFFIX SR			<ul style="list-style-type: none"> <li>● <b>ACCESSORIES</b></li> <li>Wire Guard - 14 Ga.</li> <li>4" Leg Height V-Hook</li> <li>Fixture Suspension System</li> </ul>	CAT. NO. WG14-IND100 V4 *
<ul style="list-style-type: none"> <li>● <b>OPTICAL OPTIONS</b></li> <li>Lenses</li> <li>Louvers</li> </ul>	SUFFIX * *				

\*See Appropriate Reference Page

### SPECIFICATIONS

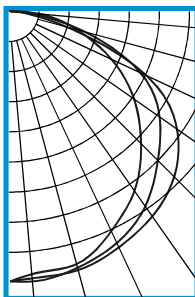
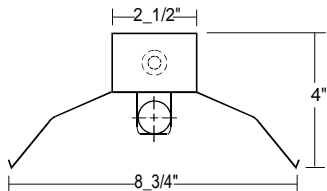
- **TYPE** One-light industrial channel.
- **CONSTRUCTION** 22 ga. cold rolled steel housing. (20 ga. housing available as specified.) End plates are fastened to housing by sheet metal screws to assure rigidity. End plates may be used as channel couplings.
- **FINISH** Baked white polyester finish standard, minimum reflectance 86%. (Powder coated finish available)
- **REFLECTOR** 22 ga. cold rolled steel reflector standard.
- **WIRING** 120v 60Hz., 277v 60Hz., UNV (universal voltage 120v thru 277v.) or as otherwise specified.
- **LABELS** U.L. Listed. Suitable for damp locations.



**PHOTOMETRIC DATA**

**IND100-1-4R-E8**

TEST NO.=LA-T0280  
 LAMP TYPE=FO32T8  
 NO. OF LAMP1  
 LUMENS PER LAMP=2900  
 WATTS PER LAMP=32  
 BALLAST FACTOR=1  
 PHOTOMETRY TYPE=C



**CANDLEPOWER**

ANGLE	END	45	CROSS
0	757	757	757
5	738	760	751
15	732	743	750
25	676	714	727
35	610	663	698
45	519	586	651
55	422	511	570
65	311	400	418
75	190	211	154
85	84	48	27
90	24	12	2
95	7	5	0
105	2	2	0
115	1	1	0
125	0	0	0
135	0	0	0
145	0	0	0
155	0	0	0
165	0	0	0
175	0	0	0
180	0	0	0

**ZONAL LUMEN SUMMARY**

DEGREES	LUMENS	% LAMP	% FIXTURE
0-30	610	21.0	23.8
0-40	1023	35.3	39.9
0-60	1929	66.5	75.2
0-90	2556	88.1	99.6
90-120	9	0.3	0.4
90-150	9	0.3	0.4
90-180	9	0.3	0.4
0-180	2566	88.5	100.0

Lumen Output = 2566 lumens  
 Luminaire Efficiency = 88.5%

**SPACING CRITERION**

ALONG	ACROSS
1.26	1.41

This space is intentionally left blank.

This space is intentionally left blank.

This space is intentionally left blank.

